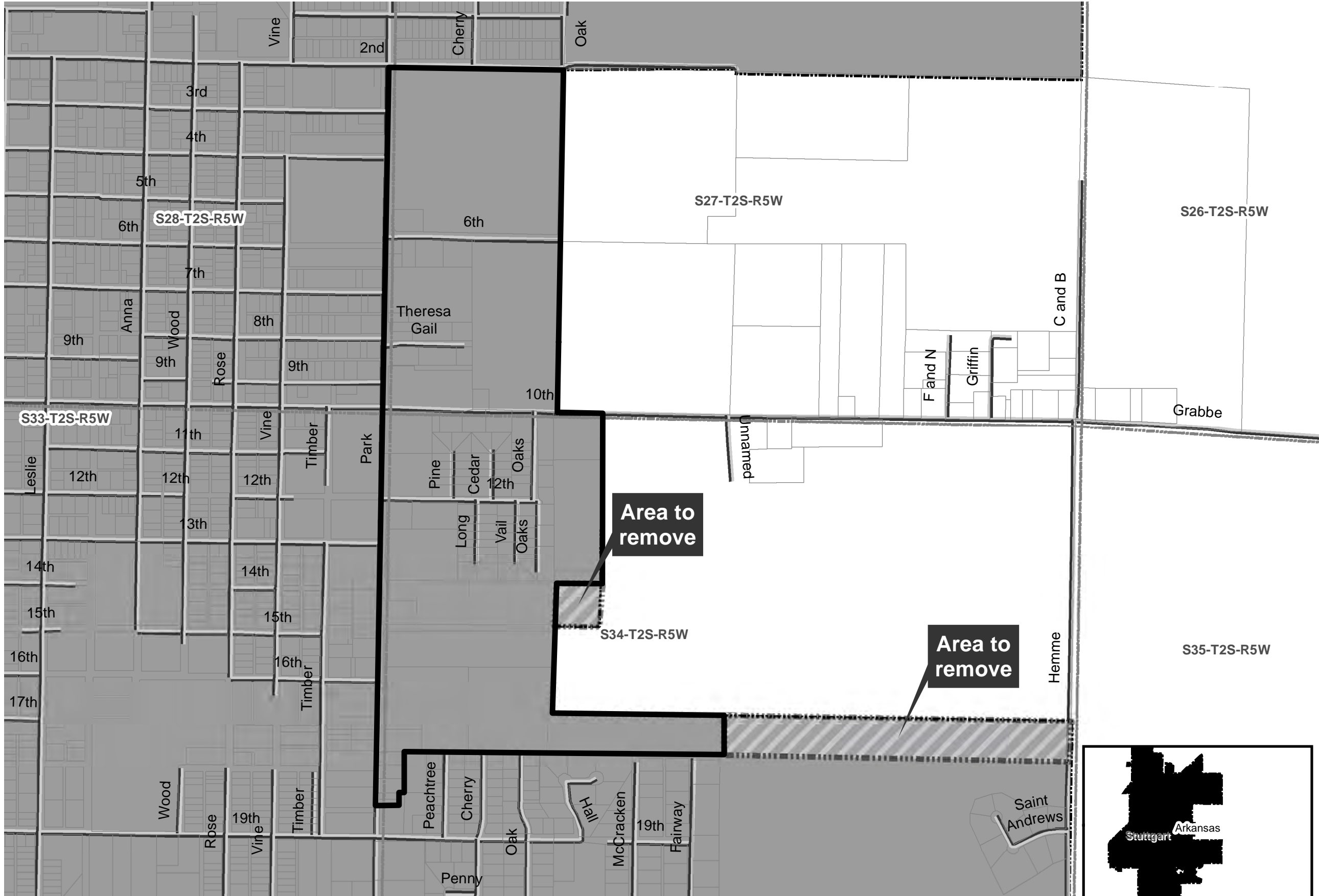
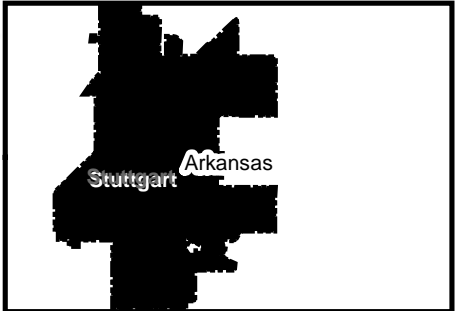
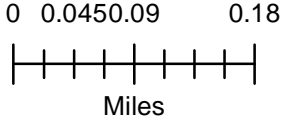


City of Stuttgart Geometry Correction
November 2017

City: Stuttgart
Mayor: J.W. Green, Jr.



- Ordinance 1085
- Boundary Correction
- Sections
- Parcels
- Minor Road
- Existing City
- County Boundary



ORDINANCE NO. 1085

AN ORDINANCE SUBMITTING TO THE VOTERS
OF THE CITY OF STUTTGART, ARKANSAS,
AND OTHER AFFECTED PERSONS, THE QUESTION OF
ANNEXATION TO THE CITY OF STUTTGART
OF CERTAIN CONTIGUOUS TERRITORY
DESCRIBED AS TRACT #2

WHEREAS, it appears to the Council of the City of Stuttgart, Arkansas, that certain hereinafter described territory contiguous to the said City of Stuttgart is necessary for the orderly growth of said City; and

WHEREAS, the lands are platted and held for sale or use as municipal lots or whether platted or not the lands are held to be sold as suburban property; and

WHEREAS, the lands furnish the abode for persons which represent the actual growth of the municipality beyond its legal boundary; and

WHEREAS, the lands are needed for proper municipal purposes; and

WHEREAS, the lands are valuable by reason of their adaptabilty for prospective municipal uses,

THEREFORE, BE IT ORDAINED BY THE CITY COUNCIL OF THE CITY OF STUTTGART, ARKANSAS:

Section 1. That there shall be submitted to the qualified electors of the City of Stuttgart and of the following described area:

A part of Sections 27 & 34, T-2-S, R-5-W in Arkansas County, Arkansas and being more particularly described as follows:

The NW 1/4, SW 1/4 of said Section 27, containing 40 acres, more or less, and ALSO; The SW 1/4, SW 1/4 of said Section 27, containing 40 acres, more or less, and ALSO; The NW 1/4, NW 1/4 of said Section 34, containing 40 acres, more or less, and ALSO; The SW 1/4, NW 1/4 of Said Section 34, containing 40 acres, more or less, and ALSO; All that part of the NW 1/4, SW 1/4 of said Section 34, that is not presently in the City limits, contains 2.21 acres, more or less, and ALSO; The West 352 feet of the NE 1/4, NW 1/4 of said Section 34, containing 10.67 acres, more or less, and ALSO; The South 300 feet of the SE 1/4, NW 1/4 of said Section 34, containing 9.09 acres, more or less, Making the total of Tract No. 2 181.97 acres, more or less.

the question of the annexation of the above described territory to the City of Stuttgart. A map depicting this area known as Tract #2 is on file in the office of the City Clerk.

Section 2. The question of annexation of the territory described above in Section 1 shall be submitted to the electors qualified to vote on this issue at a General Election to be held on November 2, 1982. The City Clerk shall immediately notify the County Election Commission by forwarding a certified copy of this ordinance.

Section 3. If at such election a majority of the qualified electors voting in such election shall vote for such annexation the municipality shall proceed to file a description and a map of the annexed area with the county clerk of the county wherein the land lies and with the Secretary of State. The annexation shall be included within the corporate limits of the annexing city thirty (30) days following the filing of the description and map with the county clerk, or in the event an action is filed with Circuit Court, on the date the judgment of said Court becomes final. If a majority of the qualified electors voting on the issue at the election vote against the annexation, the annexation ordinance shall be null and void..

Section 4. If the annexation is approved and becomes final, the following services shall be extended to the area within three (3) years:

SERVICE	DATE
Police Protection	Immediately
Fire Protection	Immediately
Water Service	Within 3 Years
Sewer Service	Within 3 Years
Sanitation Service	Immediately

Section 5. The ballots used at said election on the question of annexation shall be marked as follows:

_____ FOR Annexation of the territory described in Ordinance No. 1085 as Tract #2

_____ AGAINST Annexation of the territory described in Ordinance No. 1085 as Tract #2

APPROVED

Mayor

Date

[Signature]
August 17, 1982

ATTEST:

[Signature]
City Clerk

CERTIFICATE

I, Ann Walker City Clerk of the City of Stuttgart,
hereby certify that this ordinance has duly passed and approved
by a two-thirds vote of the total number of the governing body
of the City of Stuttgart, this 17 day of August,
1982.

SEAL

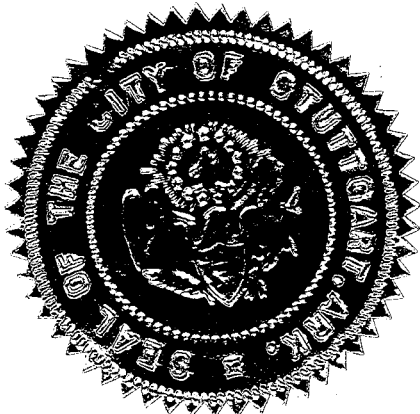
[Signature]
City Clerk
City of Stuttgart

State of Arkansas
County of Arkansas
City of Stuttgart

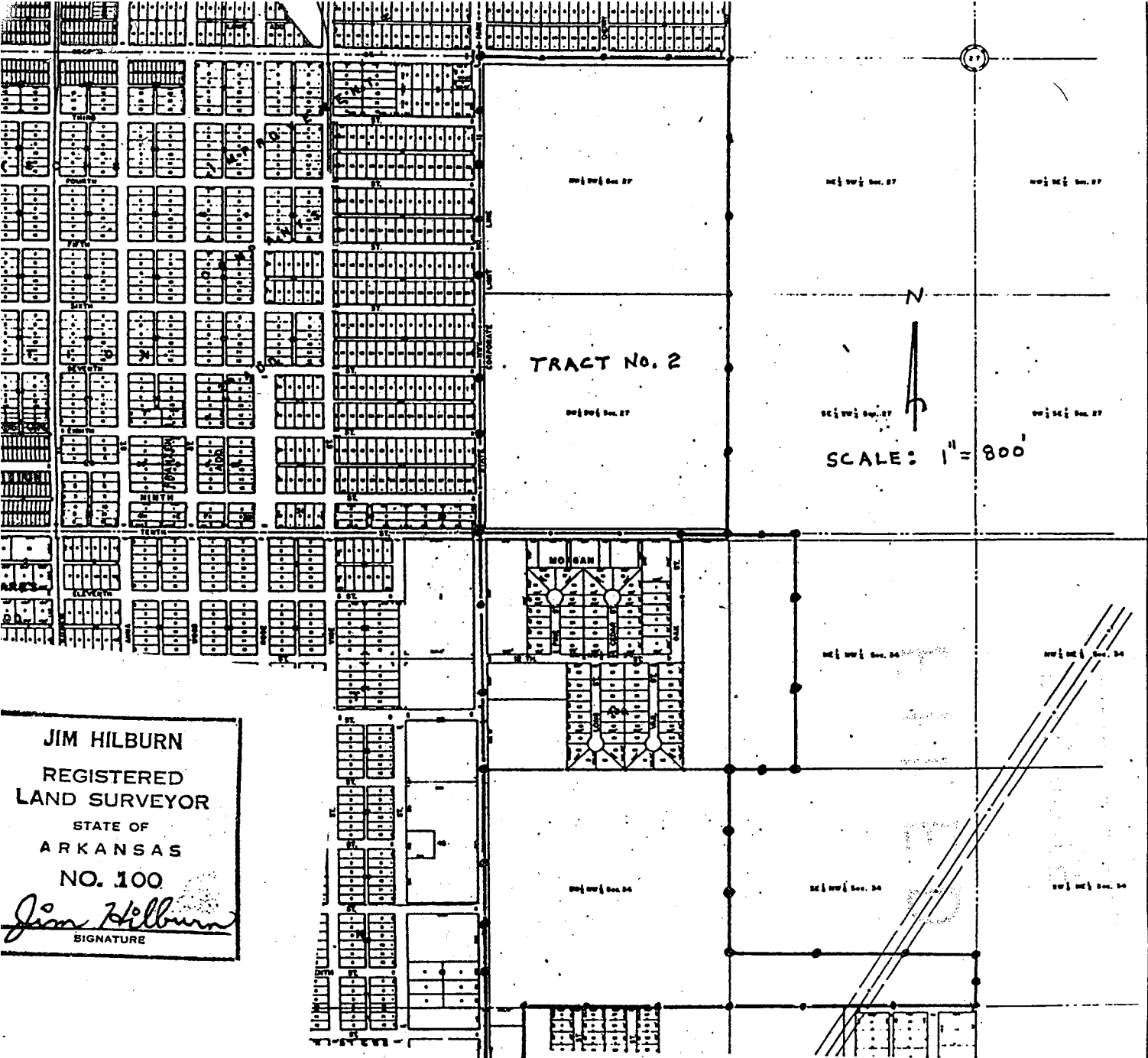
CERTIFIED COPY

I, Ann Walker, City Clerk of the City of Stuttgart, Arkansas do
hereby certify that the annexed and foregoing instrument of writing is
a true and correct, compared copy of the same as appears on the Rec-
ords on file in the office of the City Clerk.

In Testimony Whereof, I have hereunto set
my hand and affixed the seal of said City
this 8 day of December, 1982.



[Signature]
Ann Walker, City Clerk



JIM HILBURN
 REGISTERED
 LAND SURVEYOR
 STATE OF
 ARKANSAS
 NO. 100
Jim Hilburn
 SIGNATURE

Description:

A part of Section 27 & 34, T-2-S, R-5-W in Arkansas County, Arkansas and being more particularly described as follows:

The NW 1/4, SW 1/4 of said Section 27, containing 40 acres, more or less.

and Also:
 The SW 1/4, SW 1/4 of said Section 27, containing 40 acres, more or less and ALSO:

The NW 1/4, NW 1/4 of said Section 34, contains 40 acres, more or less.

and Also:
 The SW 1/4, NW 1/4 of said Section 34, containing 40 acres, more or less.

In My
 Day of
 19 82
 Clerk

State of Arkansas
 County of Arkansas

} ss.

CERTIFIED COPY

I, David C. Powell, Clerk of County and Probate Court for Arkansas County, Arkansas, do hereby certify that the annexed and foregoing instrument of writing is a true, correct, compared copy of the same as appears on the Records of the Southern District of Arkansas County, Arkansas, in Record Book I-2, at page 251 thereof.

In Testimony Whereof, I have hereunto set my hand and affixed the seal of said court this 2nd day of December, 19 82

David C Powell
 Clerk of County and Probate Court.

By Aline Ellenberg D. C.