

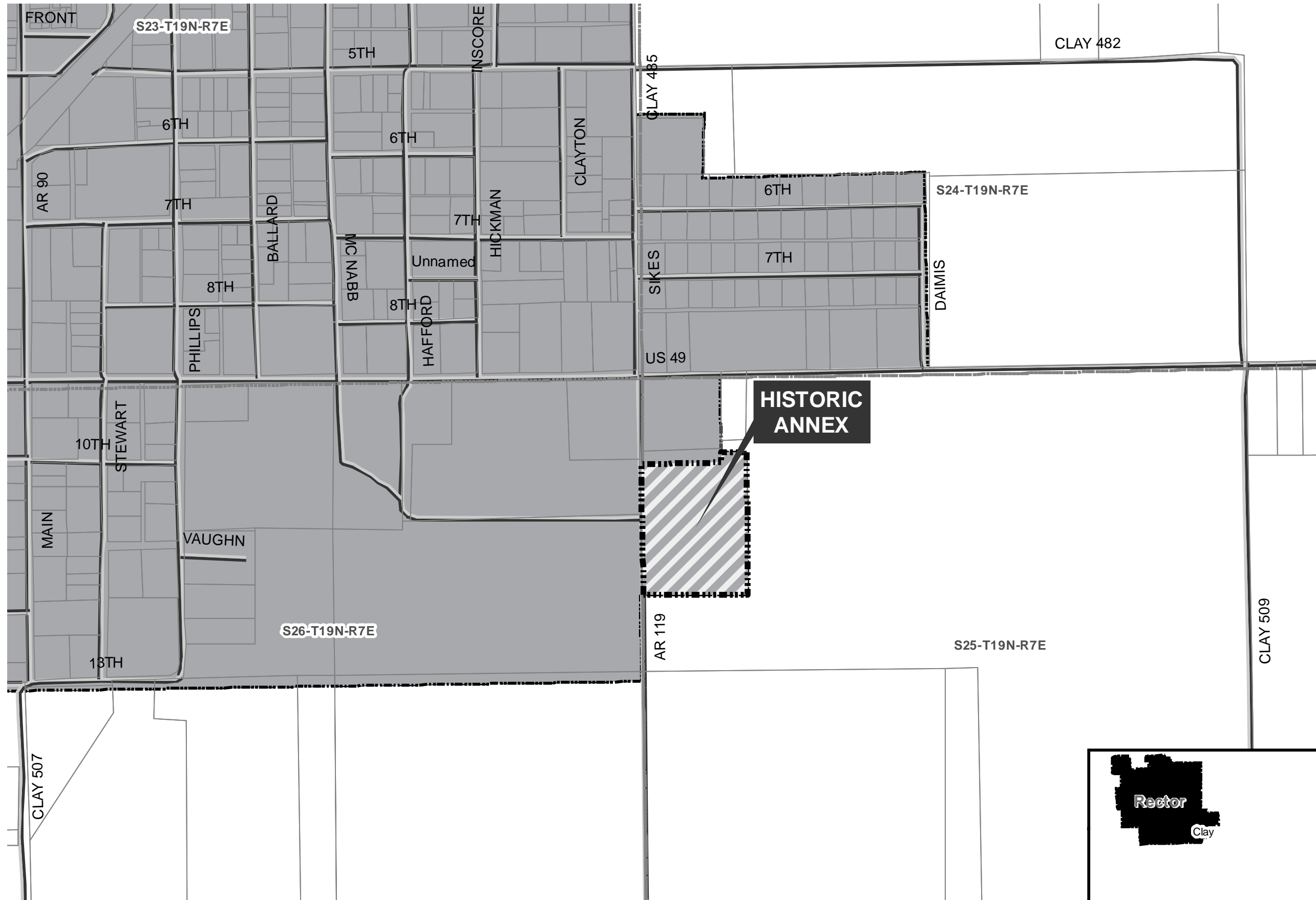
BAS Correction Historic Annex ord 470: City of Rector
 *for Census only - was already in state map

City: Rector
 Mayor: Teresa Roofe

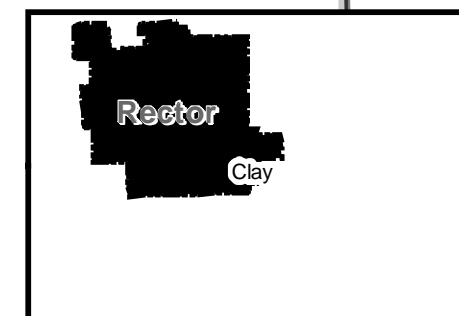
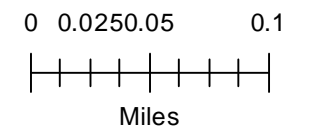
Arkansas Code 14-40-101.

Before an entity undertakes an annexation, consolidation, or detachment proceeding under this chapter, the entity shall coordinate with the Arkansas Geographic Information Systems Office for preparation of legal descriptions and digital mapping for the relevant annexation, consolidation, and detachment areas.

The map contained herein, is evidence, the entity has met requirements of Act 914 of 2015



- Proposed Annex
- Sections
- Parcels
- Minor Road
- Existing City
- Neighboring City
- County Boundary





State of Arkansas
SECRETARY OF STATE

Sharon Priest
SECRETARY OF STATE

June 29, 2000

The Honorable Charles Pollard
Clay County Clerk
Post Office Box 306
Piggott, AR 72454

Dear Mr. Pollard:

The Following Information has been recorded and filed in the Office of the Secretary of State:

Date: 06/29/2000 County: Clay City: Rector

Annexation:	Ordinance No. -	470
	Co. Order No. -	2000-01
	Plat	- X
	Election	-
	Island	-
Incorporation:	Ordinance No.	-
	Co. Order No.	-
	Plat	-
	Election	-
Census Information		-
1st Class City		-
2nd Class City		-
Incorporated Town		-

I have forwarded this information to the Arkansas Municipal League. If you have any further questions please do not hesitate to contact me at 1-800-482-1127 or 682-3451.

Sincerely,

Tena Arnold
Election Services Representative

IN THE COUNTY COURT FOR CLAY COUNTY, ARKANSAS
EASTERN DISTRICT

IN THE MATTER OF ANNEXING
CERTAIN PROPERTY LOCATED
IN RECTOR, ARKANSAS

CO-2000-

FILED FOR RECORD

ORDER OF ANNEXATION

On this 25 day of May, 2000, is presented to the court the petition of Rector Health Care, Inc., for annexation to the City of Rector, Arkansas, Clay County, Arkansas, of the following described lands, to-wit:

**CHARLES POLLARD
CLAY COUNTY & PROBATE CLERK
D.C.**
MAY 25 2000

A part of the Northwest Quarter of the Northwest Quarter of Section 25, Township 19 North, Range 7 East more particularly described as follows: Commence at the Northwest corner of said Northwest Quarter of the Northwest Quarter; thence South 89 degrees 55 minutes 13 seconds East along the North line of said Northwest Quarter of the Northwest Quarter, 45.68 feet; thence South 00 degrees 07 minutes 28 seconds East 36.24 feet to the intersection of the South Right-of-the-Way line of U.S. Highway No. 49 and the East Right-of-Way line of Arkansas Highway No. 119; thence continue South 00 degrees 07 minutes 28 seconds West along said East Right-of-Way line 300.00 feet to the point of beginning; thence South 89 degrees 55 minutes 13 seconds East parallel with the South Right-of-Way line of said U.S. Highway No. 49, 421.55 feet; thence South 00 degrees 07 minutes 28 seconds West 620.00 feet; thence North 89 degrees 55 minutes 13 seconds West 421.55 feet; thence North 00 degrees 07 minutes 28 seconds East along said East Right-of-Way line of Arkansas Highway No. 119, 620.00 feet to the point of beginning, containing 6.00 acres more or less.

The court being well and sufficiently advised in the premises finds:

1. That petitioner is the sole and only owner of the property to be annexed.
2. That a plat of said lands is filed with said petition and made a part thereof.
3. That said land is suitable and adaptable to development as a Nursing Home and should be annexed to and become a part of the incorporated City of Rector, Arkansas.

FILED

JUN 29 2000

**SHARON PRIEST
SECRETARY OF STATE**

BY _____

IT IS THEREFORE ORDERED AND ADJUDGED BY THE COURT, that
the pray of the petitioner for annexation be and the same is hereby granted.

Craig Howell
County Judge

STATE OF ARKANSAS
COUNTY OF CLAY

I hereby certify this to be a true copy of the
original filed in my official custody, in the
County Court of this County on May 25
2000.

Recorded in Book _____ page _____

Witness my hand this 26 day of June

20 00 Charles Pollard

COUNTY CLERK

By Trina Dale D.C.

AN ORDINANCE ACCEPTING ANNEXATION OF TERRITORY TO THE CITY OF RECTOR, ARKANSAS

WHEREAS, on the 5th day of June, 2000, the County Court of Clay County, Arkansas, made and entered its order annexing to the City of Rector, Arkansas, lands contiguous thereto designated and described as follows:

SEE ATTACHED EXHIBIT "A"

WHEREAS, thirty days have elapsed since the entry of such order by the County Court:

WHEREAS, no objection to such annexation has been filed by any person living within the limits of said territory or by any person living within the incorporated limits of the City of Rector, Arkansas;

NOW, therefore be it ordained by the City Council of the City of Rector, Arkansas,

SECTION 1. That the City of Rector, Arkansas, hereby accepts as a part of the incorporated limits of the City of Rector, Arkansas:

SECTION 2. A copy of this ordinance duly certified by the City Clerk shall be filed in the office of the County Clerk for Clay County, Arkansas and recorded in the record of proceedings in the matter of municipal annexations.

SECTION 3. This ordinance being necessary for the health, safety and welfare of the citizens of Rector and necessary for effective meeting, there being a significant scheduling problem for members of the City Council within the City of Rector, an emergency is declared to exist and this ordinance shall take effect and being in force from and after its passage)

Passed this 5th day of June, 2000.

Attest: Kenneth R Burns
Kenneth Burns, City Clerk

STATE OF ARKANSAS
COUNTY OF CLAY
CITY OF RECTOR

Ron Kemp
Ron Kemp, Mayor

STATE OF ARKANSAS
COUNTY OF CLAY

I hereby certify this to be a true copy of the original filed in my official custody, in the County Court of this County on June 12th 2000.

Recorded in Book _____ page _____

Witness my hand this 12th day of June 2000

Charles Pollard
COUNTY CLERK

By Janice Dale D.C.

I, Kenneth Burns, Clerk of the City of Rector, Clay County, Arkansas, do hereby certify that the annexed and foregoing pages of typewritten matter is a true, compared and correct copy of the ordinance passed by the City Council of Rector, Arkansas, on the 5th day of June, 2000.

FILED

JUN 29 2000

SHARON PRIEST
SECRETARY OF STATE

BY _____

Kenneth R Burns
Kenneth Burns, City Clerk

ORDINANCE NO. 470

AN ORDINANCE ACCEPTING ANNEXATION OF TERRITORY TO THE CITY OF RECTOR, ARKANSAS

WHEREAS, on the 5th day of June, 2000, the County Court of Clay County, Arkansas, made and entered its order annexing to the City of Rector, Arkansas, lands contiguous thereto designated and described as follows:

SEE ATTACHED EXHIBIT "A"

WHEREAS, thirty days have elapsed since the entry of such order by the County Court:

WHEREAS, no objection to such annexation has been filed by any person living within the limits of said territory or by any person living within the incorporated limits of the City of Rector, Arkansas;

NOW, therefore be it ordained by the City Council of the City of Rector, Arkansas,

SECTION 1. That the City of Rector, Arkansas, hereby accepts as a part of the incorporated limits of the City of Rector, Arkansas:

SECTION 2. A copy of this ordinance duly certified by the City Clerk shall be filed in the office of the County Clerk for Clay County, Arkansas and recorded in the record of proceedings in the matter of municipal annexations.

SECTION 3. This ordinance being necessary for the health, safety and welfare of the citizens of Rector and necessary for effective meeting, there being a significant scheduling problem for members of the City Council within the City of Rector, an emergency is declared to exist and this ordinance shall take effect and being in force from and after its passage.

Passed this 5th day of June, 2000.

Ron Kemp
Ron Kemp, Mayor

Attest: Kenneth R Burns
Kenneth Burns, City Clerk

STATE OF ARKANSAS
COUNTY OF CLAY
CITY OF RECTOR

FILED FOR RECORD

June 6 2000
at 1:35 o'clock P M.
Pat Williams Clerk
D.C.

I, Kenneth Burns, Clerk of the City of Rector, Clay County, Arkansas, do hereby certify that the annexed and foregoing pages of typewritten matter is a true, compared and correct copy of the ordinance passed by the City Council of Rector, Arkansas, on the 5th day of June, 2000.

FILED

JUN 29 2000

Kenneth R Burns
Kenneth Burns, City Clerk

SHARON PRIEST
SECRETARY OF STATE

BY _____

PROOF OF PUBLICATION

STATE OF ARKANSAS

as.

County of Clay

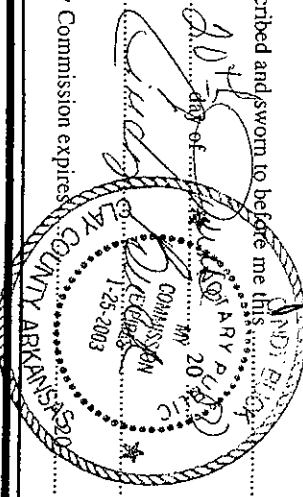
I, Ronald E. Kemp do solemnly swear that I am publisher of the Clay County Democrat, a newspaper printed and published in Rector, Clay County, State of Arkansas; that I was such publisher during the annexed legal advertisement, in the case of City of Rector, Arkansas pending in the Clay court, in said county and that the date of the several publications of said advertisement hereinafter stated at during periods and at said dates, said newspaper was printed and had a bona fide circulation in said county; that said newspaper had been regularly printed and published in same county, has a bona fide circulation therein for the period of one year next before the date of the first publication of said advertisement; and that said advertisement was published in the regular weekly issue of said newspaper for 1 times, the publications thereof having been made:

- The first on the 9th day of June 2000.
- The second on the day of 20 .
- The third on the day of 20 .
- The fourth on the day of 20 .
- The fifth on the day of 20 .
- The sixth on the day of 20 .

Ronald E. Kemp Publisher.

Number of words 444
 Fee for printing \$ 88.80
 Cost of proof 200.00
 Total 288.80

Subscribed and sworn to before me this 20th day of June 2000 at Rector, Arkansas



Legal Notice

ORDINANCE NO. 470

AN ORDINANCE ACCEPTING ANNEXATION OF TERRITORY TO THE CITY OF RECTOR, ARKANSAS

WHEREAS, on the 5th day of June, 2000, the County Court of Clay County, Arkansas, met and entered its order annexing to the City of Rector, Arkansas, lands contiguous thereto designated and described as follows:

part of the Northwest Quarter of the Northwest Quarter of Section 25, Township 19 North, Range 7 East more particularly described as follows: Commence at the Northwest corner of said Northwest Quarter of the Northwest Quarter; thence South 89 degrees 55 minutes 13 seconds East along the North line of said Northwest Quarter of the Northwest Quarter, 45.68 feet; thence South 00 degrees 07 minutes 28 seconds East 36.24 feet to the intersection of the South Right-of-Way line of U.S. Highway No. 49 and the East Right-of-Way line of Arkansas Highway No. 119; thence continue South 00 degrees 07 minutes 28 seconds West along said East Right-of-Way line 300.00 feet to the point of beginning; thence South 89 degrees 55 minutes 13 seconds East parallel with the South Right-of-Way line of said U.S. Highway No. 49, 421.55 feet, thence South 00 degrees 07 minutes 28 seconds West 620.00 feet; thence North 89 degrees 55 minutes 13 seconds West 421.55 feet; thence North 00 degrees 07 minutes 28 seconds East along said East Right-of-

Way line of Arkansas Highway No. 119, 620.00 feet to the point of beginning containing 6.00 acres more or less.

WHEREAS, thirty days have elapsed since the entry of such order by the County Court:

WHEREAS, no objection to such annexation has been filed by any person living within the limits of said territory or by any person living within the incorporated limits of the City of Rector, Arkansas;

NOW, therefore be it ordained by the City Council of the City of Rector, Arkansas,

SECTION 1. That the City of Rector, Arkansas, hereby accepts as a part of the incorporated limits of the City of Rector, Arkansas:

SECTION 2. A copy of this ordinance duly certified by the City Clerk shall be filed in the office of the County Clerk for Clay County, Arkansas and recorded in the record of proceedings in the matter of municipal annexations.

SECTION 3. This ordinance being necessary for the health, safety and welfare of the citizens of Rector and necessary for effective meeting, there being a significant scheduling problem for members of the City Council within the City of Rector, an emergency is declared to exist and this ordinance shall take effect and being in force from and after its passage.

Passed this 5th of June, 2000.

ATTEST:
 Ron Kemp, Mayor
 Kenneth R. Burns
 City Clerk

June 7, 2000

IN THE COUNTY COURT FOR CLAY COUNTY, ARKANSAS
EASTERN DISTRICT

IN THE MATTER OF ANNEXING
CERTAIN PROPERTY LOCATED
IN RECTOR, ARKANSAS

CO-2000- 0 |

PETITION FOR ANNEXATION

To the County Court of Clay County, Arkansas, Eastern District:

The undersigned, Rector Health Care, Inc., by and through its authorized attorney, C. Joseph Calvin, is the owner of the property hereinabove described, and respectfully request this court to annex the following described property to the City of Rector, Clay County, Arkansas, to-wit:

A part of the Northwest Quarter of the Northwest Quarter of Section 25, Township 19 North, Range 7 East more particularly described as follows: Commence at the Northwest corner of said Northwest Quarter of the Northwest Quarter; thence South 89 degrees 55 minutes 13 seconds East along the North line of said Northwest Quarter of the Northwest Quarter, 45.68 feet; thence South 00 degrees 07 minutes 28 seconds East 36.24 feet to the intersection of the South Right-of-the-Way line of U.S. Highway No. 49 and the East Right-of-Way line of Arkansas Highway No. 119; thence continue South 00 degrees 07 minutes 28 seconds West along said East Right-of-Way line 300.00 feet to the point of beginning; thence South 89 degrees 55 minutes 13 seconds East parallel with the South Right-of-Way line of said U.S. Highway No. 49, 421.55 feet; thence South 00 degrees 07 minutes 28 seconds West 620.00 feet; thence North 89 degrees 55 minutes 13 seconds West 421.55 feet; thence North 00 degrees 07 minutes 28 seconds East along said East Right-of-Way line of Arkansas Highway No. 119, 620.00 feet to the point of beginning, containing 6.00 acres more or less.

Petitioner states that said property is adjacent to the present city limits of the City of Rector and it would be in the best interest of the City of Rector and said property owner of the property hereinabove described to be annexed to the City of Rector.

Petitioner attached hereto a plat of the property aforesaid, as Exhibit "A" to this petition.

FILED

JUN 29 2000

SHARON PRIEST
SECRETARY OF STATE
BY _____

C. JOSEPH CALVIN
Attorney at Law
201 East Ninth
P.O. Box 196
Rector, Arkansas 72461
Phone: (870) 595-3504

C. Joseph Calvin
Attorney for Rector Health Care, Inc.

Subscribed and sworn to before me this 24th day of April,
2000.

My commission expires:



Cindy Buck
Notary Public

STATE OF ARKANSAS
COUNTY OF CLAY

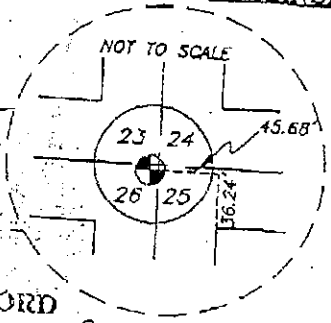
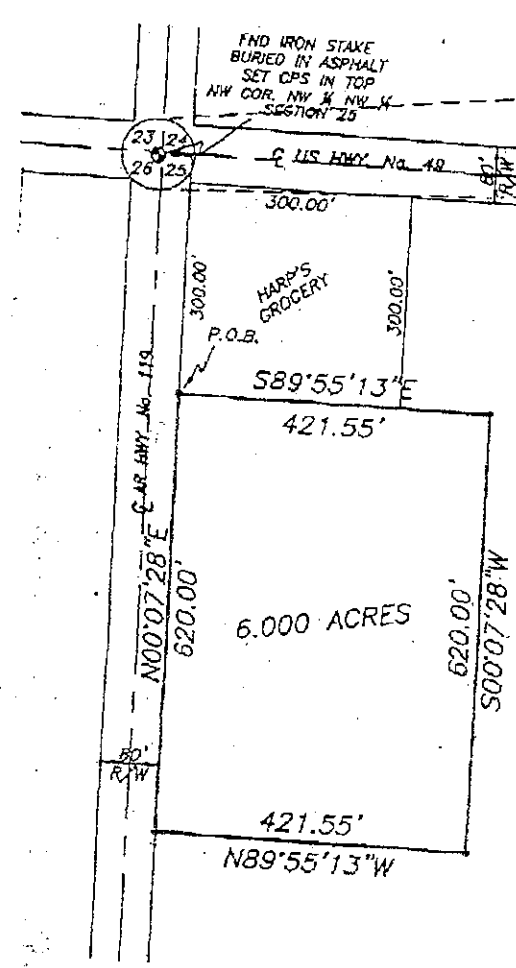
I hereby certify this to be a true copy of the
original filed in my official custody, in the
County Court of this County on April 25
2000.

Recorded in Book _____ page _____

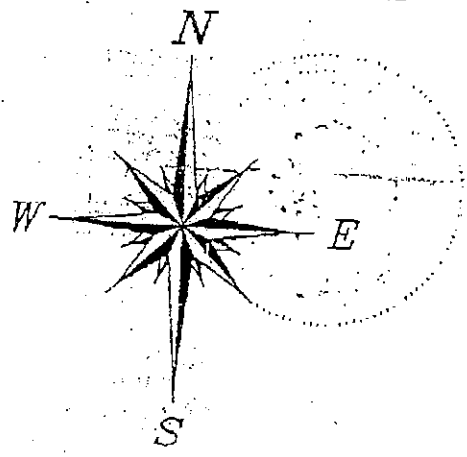
Witness my hand this 24th day of April
2000.

Charles Pollard
COUNTY CLERK
By Mina Dale D.C.

SURVEY FOR EUGENE ZUBER - RECTOR FACILITY, CLAY COUNTY, ARKANSAS



FILED FOR RECORD
 May 12 19 99
 at 3:00 o'clock P. M.
 Pat Williams Clerk
 Jay Lambert D.C.
 INSTRUMENT NO. 910 BOOK 3 PAGE 144



PROPERTY DESCRIPTION

A PART OF THE NW 1/4 OF THE NW 1/4 OF SECTION 25, T-19-N, R-7-E MORE PARTICULARLY DESCRIBED AS FOLLOWS:
 COMMENCE AT THE NORTHWEST CORNER OF SAID NW 1/4 NW 1/4; THENCE S89°55'13\"/>

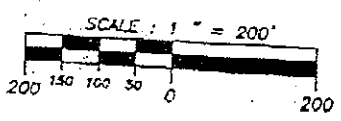
SURVEYOR'S NOTE

I HEREBY DECLARE THAT THE SURVEY SHOWN ON THIS PLAT WAS MADE BY ME OR UNDER MY DIRECTION ON APRIL 14, 1999 AND THAT THE RESULTS OF THIS SURVEY ARE REPRESENTED ON THIS PLAT TO THE BEST OF MY PROFESSIONAL KNOWLEDGE AND BELIEF.

210

LEGEND

- FOUND MONUMENT
- SET 1/2\"/>



FIL
 BY *[Signature]*
 DEBBY W. THROESCH
 PROFESSIONAL LAND SURVEYOR
 ARKANSAS NO. 1270



DeCLERK - THROESCH
 CIVIL ENGINEERING - LAND SURVEYING
 114 PYBURN ST. P.O. BOX 604
 POCAHONTAS, ARKANSAS 72455
 APRIL 14, 1999 TWT\BW 99055

JUN 29 2000

SHARON PRIEST
 SECRETARY OF STATE

BY _____

C. JOSEPH CALVIN

Attorney at Law
201 E. 9th Street
P.O. Box 196
Rector, Arkansas 72461

Telephone (870) 595-3504
Fax (870) 595-3506*2

June 26, 2000

Secretary of State
ATT: TENA ARNOLD
ANNEXATION DEPARTMENT
256 State Capitol
Little Rock, Arkansas 72201

Re: Annexation of Territory
to the City of Rector, Arkansas

Dear Tena,

Please find enclosed a file marked copy, certified by the County Clerk, of the Petition for Annexation, Order of Annexation and the Ordinance Accepting Annexation of Territory to the City of Rector, Arkansas.

Respectfully,


C. Joseph Calvin

CJC/cb
enclosures