

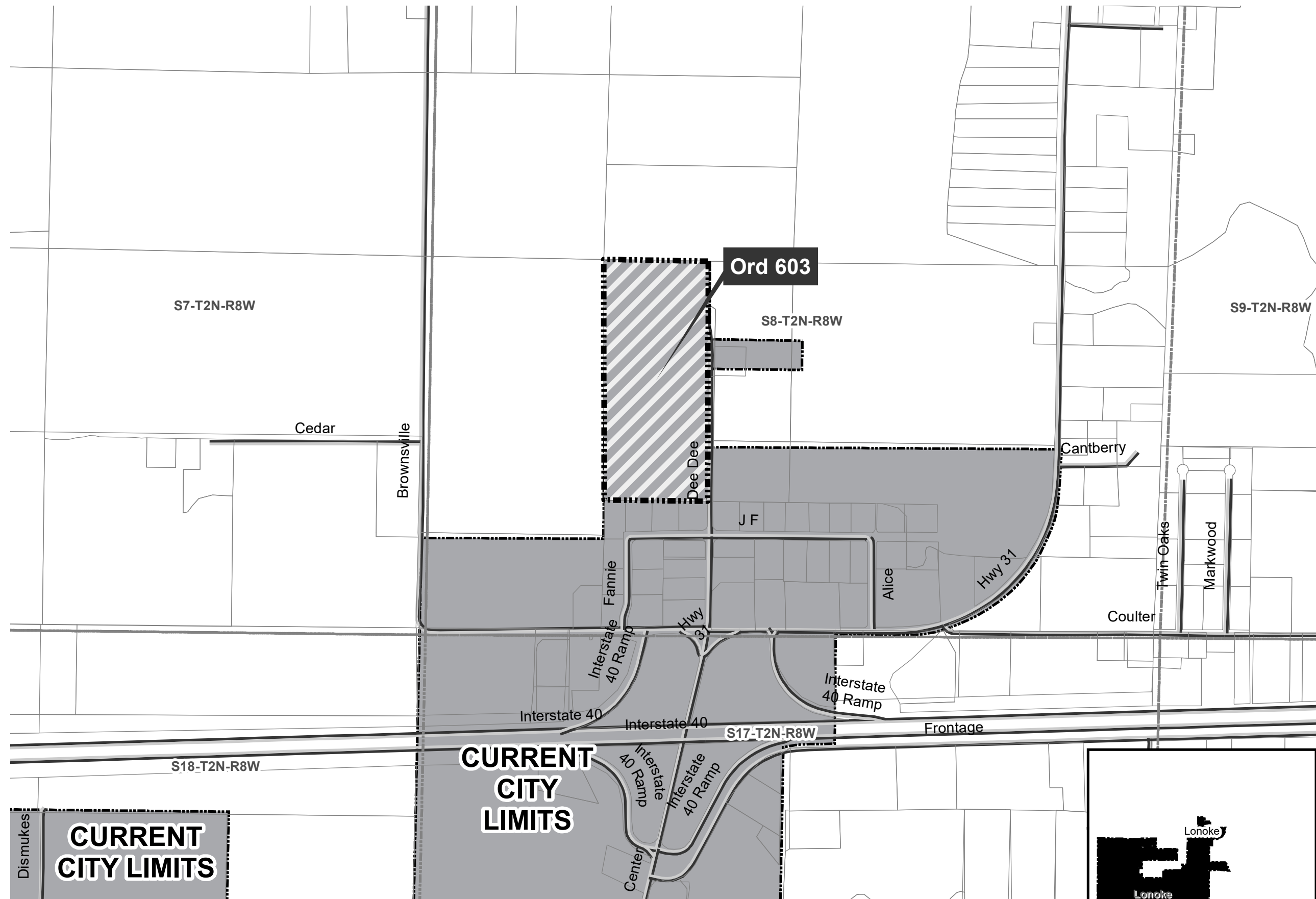
BAS Correction Ord 603: City of Lonoke
 *for Census only - was already in state map

City: Lonoke
 Mayor: Trae Reed, III

Arkansas Code 14-40-101.

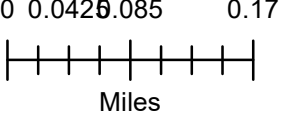
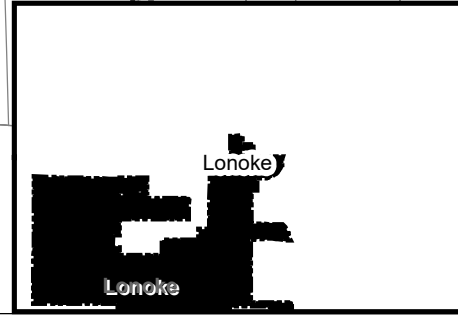
Before an entity undertakes an annexation, consolidation, or detachment proceeding under this chapter, the entity shall coordinate with the Arkansas Geographic Information Systems Office for preparation of legal descriptions and digital mapping for the relevant annexation, consolidation, and detachment areas.

The map contained herein, is evidence, the entity has met requirements of Act 914 of 2015



Dismukes
CURRENT CITY LIMITS

CURRENT CITY LIMITS





State of Arkansas Secretary of State

Charlie Daniels
Secretary of State

Business & Commercial Services	682-3409
Elections	682-5070
Building & Grounds	682-3407
Communications & Education	683-0057
State Capitol Police	682-5173
Business Office	682-8032
Information Technology	682-3411

July 14, 2010

The Honorable Dawn Porterfield
Lonoke County Clerk
P.O. Box 188
Lonoke, AR 72143

Dear Ms. Porterfield:

The Following Information has been recorded and filed in the Office of the Secretary of State:

Date: July 8, 2010 County: Lonoke Town: Lonoke

Annexation:	Ordinance No: 603
	County Order No.—C-2010-130
	Plat ~ x
	Election -
	Island -
Incorporation:	Ordinance No. -
	Co. Order No. -
	Plat -
	Election -

Census Information: The following City or Town has been upgraded or reduced to:

1st Class City -
2nd Class City -
Incorporated Town -

I have forwarded this information to the Arkansas Municipal League and the Arkansas Highway and Transportation Department and the Arkansas State Data Center. If you have any further questions please do not hesitate to contact me at 1-800-482-1127 or 682-3451

Sincerely,

Pam Ratliff
Election Services Representative
Arkansas Secretary of State

ORDINANCE NO. 603

C-2010-130

AN ORDINANCE ACCEPTING CERTAIN ANNEXED PROPERTIES
INTO THE CITY LIMITS OF LONOKE,
DECLARING AN EMERGENCY AND FOR OTHER PURPOSES

2010 JUN 17 AM 11:30

FILED

BE IT ORDAINED BY THE CITY COUNCIL OF THE CITY OF LONOKE,
ARKANSAS:

SECTION 1: Wherefore by petition method, the landowners in certain real property located within Lonoke County and contiguous to the municipal boundaries of the City of Lonoke have petitioned to be annexed into the City of Lonoke.

SECTION 2: The petitioners presented to the City Council that they have complied with the requirements of petitioning for annexation, presenting the matter before the County Judge and presenting the matter at public hearings. No objections have been received and no law suits have been filed to block the annexation.

SECTION 3: The County Judge issued an Order for Annexation June 8, 2010. Arkansas law §14-40-604 requires that the Annexation not become effective for 30 days following the Judge's Order. That effective date is July 8, 2010. Thus the effective date of this Annexation shall be set at July 8, 2010.

SECTION 4: It is in the best interest of the health, safety and welfare of the citizens of Lonoke that the following land be annexed into and become part of the City of Lonoke, Arkansas:

A tract located in the NE ¼, SW ¼, Section 8, T-2-N, R-8-W, more particularly described as:

Commencing at the SW corner of Section 8, T-2-N, R-8-W, Lonoke County, Arkansas; Run East 2128.2 feet, Thence North 1320.1 feet to a point on the East Right of Dee Dee Lane, Thence N89°29'31"W 60 feet for a Point of Beginning, being the SE corner of the tract, Thence N89°29'31"W 786.2 feet to a point on the Quarter Section Line, Thence N1°09'07"E 1339.2 to the NW Corner of the NE¼ of the SW¼ of Section 8, Thence S89°29'31"E 711.8 feet, Thence S0°32'11"W 1339.3 feet to the Point of Beginning containing about 22.1 acres, more or less. (Subject to any and all conditions, restrictions, and easements now of record.) A copy of the area to be Annexed is attached hereto.

JUL 14 2010

RECORDED

CHARLIE DANIELS
SECRETARY OF STATE

BOOK 13 PAGE 602

SECTION 5: The annexed area shall be a part of Ward Two (2). The annexed area shall be zoned General Commercial.

SECTION 6: The City shall accept all designated road ways as City Streets and shall maintain maintenance thereof.

SECTION 7: The Clerk shall certify two copies of this Ordinances accepting annexation to the County Clerk of Lonoke County, Arkansas. The City of Lonoke shall provide municipal services to the annexed area of fire, police and sewer.

SECTION 8: This Ordinance being necessary for the immediate protection of the public health, safety, and welfare, an emergency is hereby declared to exist, and this Ordinance shall be in full force and effect from and after July 8, 2010.

PASSED this 14th day of June, 2010.

ATTEST:

Regina Ibbotson
Regina Ibbotson

APPROVED:

Wayne McGee
Wayne McGee, Mayor

CERTIFIED COPY

STATE OF ARKANSAS, COUNTY OF LONOKE
I, Dawn Porterfield, County Clerk within and to the County and State aforesaid, do hereby certify that the annexed and foregoing instrument of writing is a true and correct copy of Ordinance C-2010-130 Recorded on this 17 day of June 2010 Recorded Book Vol. 13 Page 607
IN TESTIMONY WHEREOF I have herunto set my hand and affixed the seal of said Court on the 16 day of June 2010
Dawn Porterfield Clerk
John W. [Signature] Deputy Clerk

FILED

RECORDED

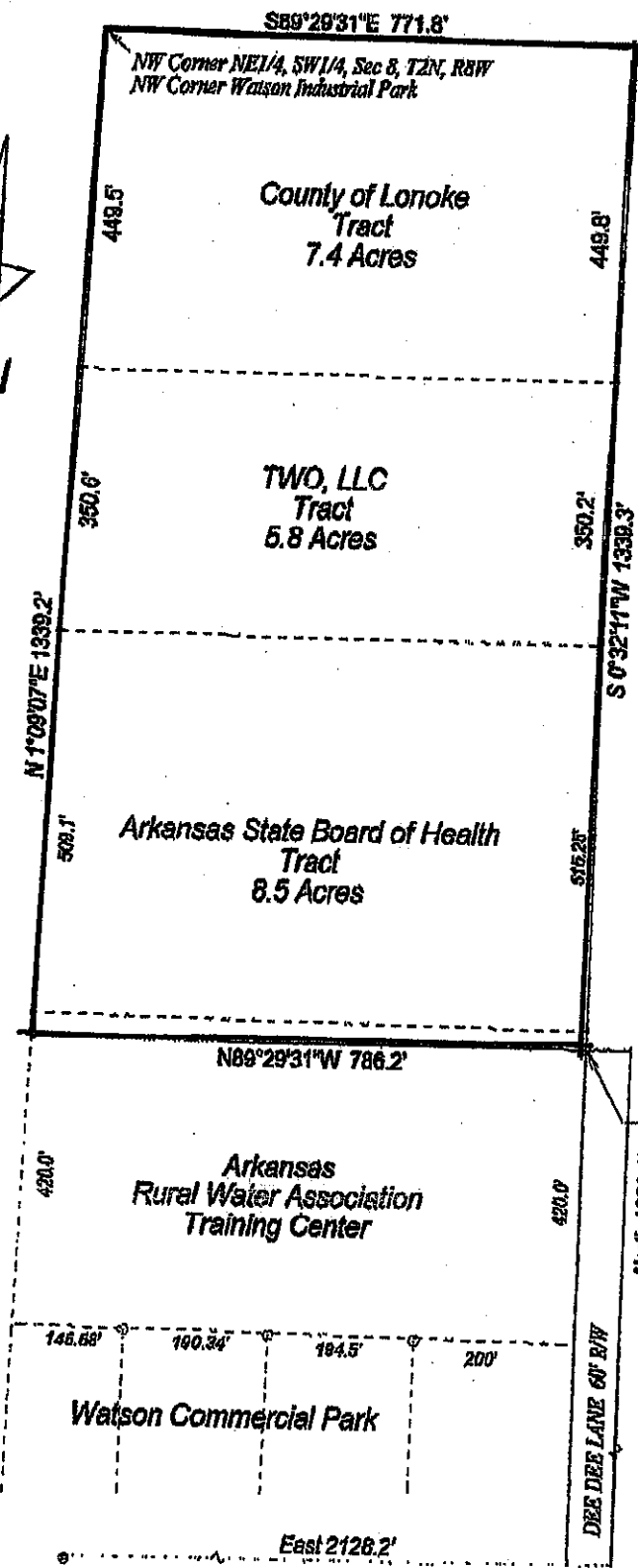
BOOK 13 PAGE 607

JUL 14 2010

CHARLIE DANIELS
SECRETARY OF STATE

BY _____

Annexation - bold/ outlined area



Watson Industrial Park

AREA TO BE ANNEXED BY THE CITY OF LONOKE, ARKANSAS

PROPERTY DESCRIPTION

A tract of land located in the NE 1/4, SW 1/4, Section 8, T-2-N, R-8-W, Lonoke County, Arkansas more particularly described as:

Commencing at the SW corner of Section 8, T-2-N, R-8-W, Lonoke, County, Arkansas; Run East 2128.2 feet, Thence North 1320.1 feet to a point on the East Right of Dee Dee Lane, Thence N89°29'31"W 60.0 feet to a Point of Beginning, being the SE corner of the tract, Thence N89°29'31"W 726.2 feet to a point on the Quarter Section Line, Thence N01°09'07"E 1339.2' to the NW Corner of the NE1/4 of the SW1/4 of Section 8, Thence S89°29'31"E 711.8 feet, Thence S0°32'11"W 1339.3 feet to the Point of Beginning containing about 22.1 acres.

2010 JUN 17 AM 11:39
FILED

FILED

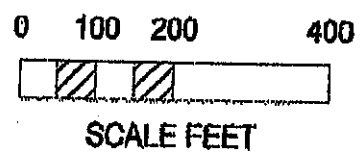
JUL 14 2010

CHARLIE DANIELS
SECRETARY OF STATE

BY

RECORDED

BOOK 13 PAGE 608



Sullivan & Associates

North Little Rock, AR 72116

Exhibit B

IN THE COUNTY COURT OF LONOKE COUNTY, ARKANSAS

IN THE MATTER OF ANNEXING
CERTAIN TERRITORY CONTIGUOUS TO
THE CITY OF LONOKE, LONOKE COUNTY, ARKANSAS

NO: C-2010-138

FILED
2010 JUN -8 AM 10:11

ORDER GRANTING PETITION FOR ANNEXATION

On this date, comes before this Court a request by the Petitioners for certain lands to be annexed into the City of Lonoke. The Court finds as follows:

1. That the Petitioners represent a majority (as defined in Ark. Code Ann. § 14-40-601(b)) of the real estate owners of the real property which is the subject of the Petition.
2. That the real property that is the subject of the Petition is contiguous to and adjoining the present corporate limits of the City of Lonoke, Lonoke County, Arkansas.
3. That the property owners of said property include the County of Lonoke (approximately 7.4 acres known as the Lonoke County Jail and Lonoke County Road Department), Two, LLC (approximately 5.8 acres also known as Razorback Concrete), the Arkansas State Board of Health (approximately 8.5 acres undeveloped), and the City of Lonoke (approximately 0.5 acres as a Utility easement on the north part of the Arkansas Rural Water Association Training Center). Petition, Exhibit "A".
4. That an accurate survey map thereof has been made. See Petition, Exhibit "B".
5. That a proper Proof of Publication has been made and filed.

THEREFORE, this Court orders that the following real property should be annexed to and made a part of the City of Lonoke, Lonoke County, Arkansas:

A tract located in the NE ¼, SW ¼, Section 8, T-2-N, R-8-W, more particularly described as:

Commencing at the SW corner of Section 8, T-2-N, R-8-W, Lonoke County, Arkansas; Run East 2128.2 feet, Thence North 1320.1 feet to a point on the East Right of Dee Dee Lane, Thence N89°29'31"W 60 feet for a Point of Beginning, being the SE corner of the tract, Thence N89°29'31"W 726.2 feet to a point on the Quarter Section Line, Thence N1°09'07"E 1339.2 to the NW Corner of the NE¼ of the SW¼ of Section 8, Thence S89°29'31"E 711.8 feet, Thence S0°32'11"W 1339.3 feet to the Point of Beginning containing about 22.1 acres, more or less. (Subject to any and all conditions, restrictions, and easements now of record.)

ORDERED this 8 day of June 2010

Charlie Troutman

Judge Charlie Troutman, County Judge, Lonoke County

FILED

JUL 14 2010

CHARLIE DANIELS
SECRETARY OF STATE

RECORDED

BY

BOOK 13 PAGE 519

CERTIFIED COPY
STATE OF ARKANSAS, COUNTY OF LONOKE
I, Dawn Porterfield, County Clerk within and to the County and State aforesaid, do hereby certify that the annexed and foregoing instrument of writing is a true and correct copy of Order Recorded on this 8 day of June 2010. Recorded Book Vol. 13 Page 519
IN TESTIMONY WHEREOF I have hereunto set my hand and affixed the seal of said Court on the 7 day of July 2010.
By *[Signature]* Deputy Clerk

IN THE COUNTY COURT OF LONOKE COUNTY, ARKANSAS

IN THE MATTER OF ANNEXING
CERTAIN TERRITORY CONTIGUOUS TO
THE CITY OF LONOKE, LONOKE COUNTY, ARKANSAS

FILED

NO: C-2010-130 JUL 14 2010

ANNEXATION PETITION

Comes the undersigned Petitioners and for their Annexation Petition, state: *S.M.*

1. That the Petitioners represent a majority (as defined in Ark. Code Ann. § 14-40-601(b)) of the real estate owners of the real property described in paragraph 2 below.
2. That the Petitioners desire that the following real property be annexed to and made a part of the City of Lonoke, Lonoke County, Arkansas:

A tract of land located in the NE ¼, SW ¼, Section 8, T-2-N, R-8-W, Lonoke County, Arkansas, more particularly described as:
 Commencing at the SW corner of Section 8, T-2-N, R-8-W, Lonoke County, Arkansas; Run East 2128.2 feet, Thence North 1320.1 feet to a point on the East Right of Dee Dee Lane, Thence N89°29'31"W 60 feet for a Point of Beginning, being the SE corner of the tract, Thence N89°29'31"W 726.2 feet to a point on the Quarter Section Line, Thence N1°09'07"E 1339.2 to the NW Corner of the NE¼ of the SW¼ of Section 8, Thence S89°29'31"E 711.8 feet, Thence S0°32'11"W 1339.3 feet to the Point of Beginning containing about 22.1 acres, more or less.

Subject to any and all conditions, restrictions, and easements now of record.

3. That the above-described property is contiguous to and adjoining the present corporate limits of the City of Lonoke, Lonoke County, Arkansas.
4. That the property owners of said property include the County of Lonoke (approximately 7.4 acres known as the Lonoke County Jail and Lonoke County Road Department), Two, LLC (approximately 5.8 acres also known as Razorback Concrete), the Arkansas State Board of Health (approximately 8.5 acres undeveloped), and the City of Lonoke (approximately 0.5 acres as a Utility easement on the north part of the Arkansas Rural Water Association Training Center). The signed petition of the owners is attached as Exhibit "A" and made a part hereof.
5. That an accurate survey map thereof has been made and attached hereto as Exhibit "B" and made a part hereof. The portion to be annexed is outlined in a dark line.

WHEREFORE, Petitioners pray that the Clerk file this Petition, and that the Court set a date not less than thirty (30) days after the filing of this Petition for a Hearing on the Petition for the annexation.

FILED

Respectfully Submitted:

JUL 14 2010

Lonoke County
Two, LLC
City of Lonoke

CHARLIE DANIELS
SECRETARY OF STATE

RECORDED

BOOK 13 PAGE 609

Petition to annex to the City of Lonoke

Area to be annexed by the City of Lonoke, Ar., a tract on land located in the NE 1/4, SW1/4, Section 8, T-2-N, R-8-W, Lonoke County, Arkansas described as: run east 2128.2 feet, thence north 1320.1 feet to a point on the east right of Dee Dee Lane, containing about 23.95 acres. Tracts contain: County of Lonoke tract (Lonoke County Jail and Lonoke County Road Dept.) - 7.4 acres, Two, LLC tract (Razorback Concrete) 5.8 acres, and Arkansas State Board of Health tract 8.5 acres. These tracts are in the area also known as Watson Industrial Park.

Date 4-15-10

Charlie Probst

Lonoke County Judge

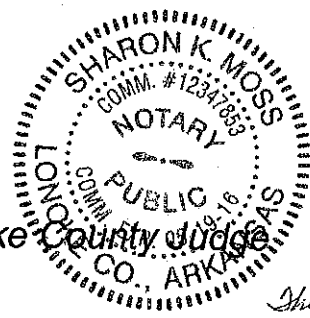
Keith M. Ingram

Two, LLC

Arkansas State Board of Health

Wayne McGee

City of Lonoke, Mayor



Sharon K. Moss,
Notary Public
This 15th day of April, 2010.
My Commission expires May 19, 2016

FILED

JUL 14 2010

CHARLIE DANIELS
SECRETARY OF STATE

BY _____

RECORDED

BOOK 13 PAGE 610

Exhibit A

Annexation - bold outlined area

Watson Industrial Park

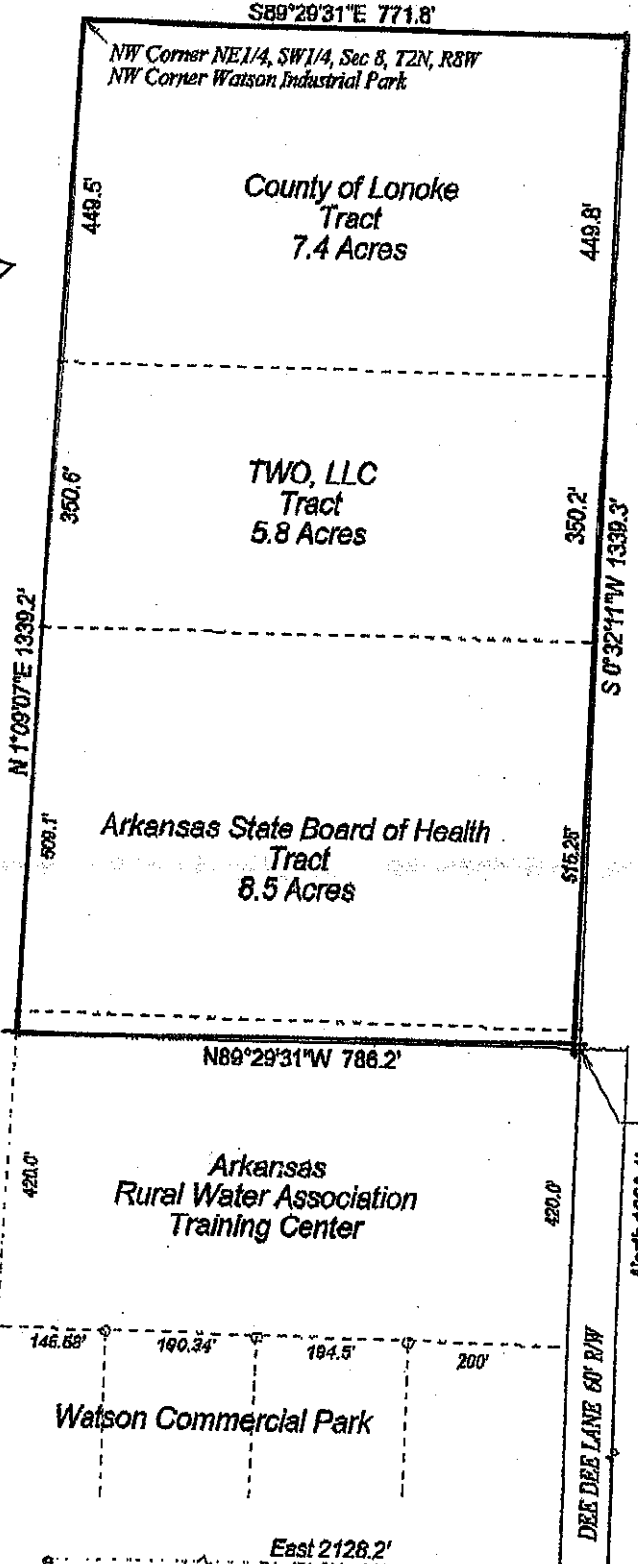
CERTIFIED COPY
STATE OF ARKANSAS, COUNTY OF LONOKE
I, Dawn Porterfield, County Clerk within and to the County and State aforesaid, do hereby certify that the annexed and foregoing instrument of writing is a true and correct copy of that Recorded on this 3 day of April, 2010 Recorded Book Vol. 13 Page 611
IN TESTIMONY WHEREOF, I have hereunto set my hand and affixed the seal of said Court on the 12 day of July, 2010
Dawn Porterfield Clerk
[Signature] Deputy Clerk

AREA TO BE ANNEXED BY THE CITY OF LONOKE, ARKANSAS

PROPERTY DESCRIPTION

A tract of land located in the NE 1/4, SW 1/4, Section 8, T-2-N, R-8-W, Lonoke County, Arkansas more particularly described as:

Commencing at the SW corner of Section 8, T-2-N, R-8-W, Lonoke, County, Arkansas; Run East 2128.2 feet, Thence North 1320.1 feet to a point on the East Right of Dee Dee Lane, Thence N89°29'31"W 60.0 feet for a Point of Beginning, being the SE corner of the tract, Thence N89°29'31"W 726.2 feet to a point on the Quarter Section Line, Thence N01°09'07"E 1339.2' to the NW Corner of the NE1/4 of the SW1/4 of Section 8, Thence S89°29'31"E 711.8 feet, Thence S0°32'11"W 1339.3 feet to the Point of Beginning containing about 22.1 acres.



Point of Beginning

Watson Industrial Park

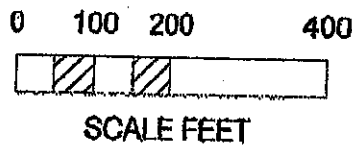
RECORDED
BOOK 13 PAGE 611
FILED

JUL 14 2010

CHARLIE DANIELS
SECRETARY OF STATE
By Sullivan & Associates

North Little Rock, AR 72116

Exhibit B





State of Arkansas Secretary of State

Charlie Daniels
Secretary of State

Business & Commercial Services	682-3409
Elections	682-5070
Building & Grounds	682-3407
Communications & Education	683-0057
State Capitol Police	682-5173
Business Office	682-8032
Information Technology	682-3411

August 24, 2010

The Honorable Dawn Porterfield
Lonoke County
P.O. Box 188
Lonoke, AR 72086-0188

Dear Ms. Porterfield:

The Following Information has been recorded and filed in the Office of the Secretary of State:

Date: August 24, 2010 County: Lonoke City: Lonoke

Annexation:	Ordinance No.	~ 603 (replacement/technical errors)
	County Order No	~ C-2010-130
	Plat	~ XX—
	Election	-
	Island	-
Incorporation:	Ordinance No.	-
	Co. Order No.	-
	Plat	-
	Election	-

Census Information: The following City or Town has been upgraded or reduced to:

- 1st Class City -
- 2nd Class City -
- Incorporated Town -

I have forwarded this information to the Arkansas Municipal League and the Arkansas Highway and Transportation Department and the Arkansas State Data Center. If you have any further questions please do not hesitate to contact me at 1-800-482-1127 or (501) 682-3451.

Sincerely,

Pam Ratliff
Election Services
Arkansas Secretary of State

OFFICE OF

Dawn Porterfield

County Clerk of Lonoke County

P. O. Box 188

Lonoke, Arkansas 72086-0188

August 11, 2010

State Of Arkansas Secretary of State
Room 256 State Capitol
Little Rock, AR 72201-1094

RE: C-2010-130 Amended Ordinance accepting certain annexed Properties into
City Limits of Lonoke, Declaring an Emergency and for other purposes

Dear Sirs:

Sending a copy of the receipt sent in July 15, 2010. The amended
paper work is enclosed.

Thank you, if you have any questions, please call Rita, 501-676-3022.

Sincerely,

Dawn Porterfield, by Rita Moody, Deputy Clerk
DAWN PORTERFIELD, LONOKE COUNTY CLERK



State of Arkansas Secretary of State

Charlie Daniels
Secretary of State

FILED
2010 JUL 15 PM 3:12

LONGOKE COUNTY CLERK
DAWN PORTERFIELD
[Signature]

Business & Commercial Services	682-3409
Elections	682-5070
Building & Grounds	682-3407
Communications & Education	683-0057
State Capitol Police	682-5173
Business Office	682-8032
Information Technology	682-3411

July 14, 2010

The Honorable Dawn Porterfield
Lonoke County Clerk
P.O. Box 188
Lonoke, AR 72143

Dear Ms. Porterfield:

The Following Information has been recorded and filed in the Office of the Secretary of State:

Date: July 8, 2010 County: Lonoke Town: Lonoke

Annexation:	Ordinance No: 603
	County Order No.—C-2010-130
	Plat - X
	Election -
	Island -
Incorporation:	Ordinance No. -
	Co. Order No. -
	Plat -
	Election -

Census Information: The following City or Town has been upgraded or reduced to:

- 1st Class City -
- 2nd Class City -
- Incorporated Town -

I have forwarded this information to the Arkansas Municipal League and the Arkansas Highway and Transportation Department and the Arkansas State Data Center. If you have any further questions please do not hesitate to contact me at 1-800-482-1127 or 682-3451

Sincerely,

Pam Ratliff
Election Services Representative
Arkansas Secretary of State

IN THE COUNTY COURT OF LONOKE COUNTY, ARKANSAS

FILED

2010 AUG -2 PM 2:19

IN THE MATTER OF ANNEXING
CERTAIN TERRITORY CONTIGUOUS TO
THE CITY OF LONOKE, LONOKE COUNTY, ARKANSAS

NO: C-2010-130

LONOKE COUNTY CLERK
DAVID W. PERFIELD

MOTION FOR AMENDED ORDER GRANTING ANNEXATION

[Handwritten Signature]

On this date, comes before this Court the Petitioners praying for an amendment to this Court's earlier Order dated June 8, 2010, correcting the legal description of certain lands previously ordered to be annexed into the City of Lonoke. The Petitioners state as follows:

1. That the previous Order of the Court contains a technical error which should be corrected.
2. The legal description referenced in the previous Order states in the written description 711.8 feet and 726.2 feet but the drawing on the same page makes it clear that the footage should be 771.8 and 786.2 feet.
3. This error in the legal description is a mere technicality that does not affect the substance of this Court's previous Order. Therefore, no additional proceedings or notice is required. When a petition contained an incorrect property description, but had a correct map attached thereto, the Arkansas Supreme Court held that such notice is proper and sufficient to support the Annexation. *Chastain v. Davis*, 294 Ark. 134, 741 S.W.2d 632 (1987).
2. Therefore Petitions pray for an Amended Order correcting the legal description to read as follows:

A tract located in the NE ¼, SW ¼, Section 8, T-2-N, R-8-W, more particularly described as:

Commencing at the SW corner of Section 8, T-2-N, R-8-W, Lonoke County, Arkansas; Run East 2128.2 feet, Thence North 1320.1 feet to a point on the East Right of Dee Dee Lane, Thence N89°29'31"W 60 feet for a Point of Beginning, being the SE corner of the tract, Thence N89°29'31"W 786.2 feet to a point on the Quarter Section Line, Thence N1°09'07"E 1339.2 to the NW Corner of the NE¼ of the SW¼ of Section 8, Thence S89°29'31"E 771.8 feet, Thence S0°32'11"W 1339.3 feet to the Point of Beginning containing about 22.1 acres, more or less. (Subject to any and all conditions, restrictions, and easements now of record.)

Respectfully Submitted:

Lonoke County
Two, LLC
City of Lonoke

RECORDED
County Court Record
BOOK 13 PAGE 699

IN THE COUNTY COURT OF LONOKE COUNTY, ARKANSAS

IN THE MATTER OF ANNEXING
CERTAIN TERRITORY CONTIGUOUS TO
THE CITY OF LONOKE, LONOKE COUNTY, ARKANSAS

NO: C-2010-130

FILED
2010 AUG 10 AM 10:06
LONOKE COUNTY CLERK
DANIEL M. BERRY
BY *Mark*

AMENDED MOTION FOR AMENDED ORDER GRANTING ANNEXATION

Petitioners come before this Court requesting that the Court grant their Amended Motion for Amended Order Granting Annexation. Petitioners pray for an amendment to this Court's earlier Order dated June 8, 2010, correcting the legal description of certain lands previously ordered to be annexed into the City of Lonoke. The Petitioners state as follows:

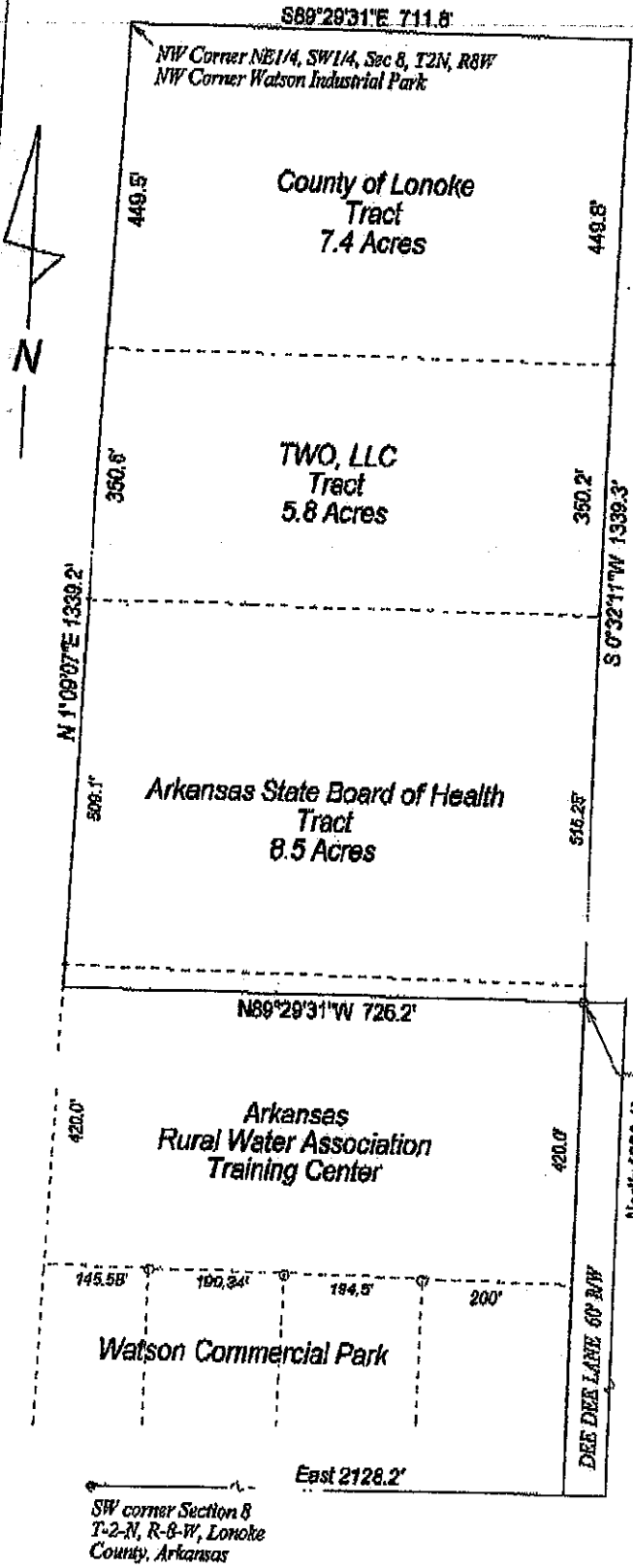
1. That the previous Order of the Court contains technical errors that do not affect the substance of the Annexation proceedings. The Original Motion for Amended Order did not correct all technical errors. Therefore, this Amended Motion is filed.
2. The legal description referenced in the previous Order correctly states in the written description that the measurements include 711.8 feet and 726.2 feet but the drawing on the same page incorrectly states the footage as 771.8 and 786.2 feet. In addition the written description contains typographical errors that are corrected on the attached Corrected Exhibit A.
3. This errors in the legal description are mere technicalities that do not affect the substance of this Court's previous Order. Therefore, no additional proceedings or notice is required. When a petition contained an incorrect property description, but had a correct map attached thereto, the Arkansas Supreme Court held that such notice is proper and sufficient to support the Annexation. *Chastain v. Davis*, 294 Ark. 134, 741 S.W.2d 632 (1987). The same rule should apply here when the written description is correct but the map is incorrect.
2. Therefore Petitions pray for an Amended Order substituting the corrected survey attached as Exhibit A for the previous incorrect survey attached to the Court's original Order.

Respectfully Submitted:

Lonoke County
Two, LLC
City of Lonoke

RECORDED

BOOK 13 PAGE 700



Watson Industrial Park

FILED
2010 AUG 10 AM 10:13
Dawn Porterfield, County Clerk
John Michael, Deputy Clerk

**AREA TO BE ANNEXED BY
THE CITY OF LONOKE, ARKANSAS**

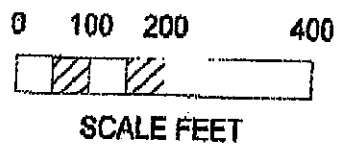
PROPERTY DESCRIPTION

A tract of land located in the NE 1/4, SW 1/4, Section 8, T-2-N, R-8-W, Lonoke County, Arkansas more particularly described as:

Commencing at the SW corner of Section 8, T-2-N, R-8-W, Lonoke, County, Arkansas; Run East 2128.2 feet, Thence North 1320.1 feet to a point on the East Right of Way of Dee Dee Lane, Thence N69°29'31"W 60.0 feet to the Point of Beginning, being the SE corner of the tract, Thence N89°29'31"W 726.2 feet to a point on the Quarter Section Line, Thence N01°09'07"E 1339.2 feet to the NW Corner of the NE1/4 of the SW1/4 of Section 8, Thence S89°29'31"E 711.8 feet, Thence S0°32'11"W 1339.3 feet to the Point of Beginning containing about 22.1 acres.

Watson Industrial Park

CERTIFIED COPY
STATE OF ARKANSAS, COUNTY OF LONOKE
I, Dawn Porterfield, County Clerk within and to the County and State aforesaid, do hereby certify that the annexed and foregoing instrument of writing is a true and correct copy of Map C-2010-130 Recorded on this 20 day of August 2010 Recorded Book Vol. 13 Page 701
IN TESTIMONY WHEREOF I have hereunto set my hand and affixed the seal of said Court on the 11 day of August 2010
Dawn Porterfield, Clerk
John Michael, Deputy Clerk



Sullivan & Associates
North Little Rock, AR 72116
501-351-5940

RECORDED

BOOK 13 PAGE 701

IN THE COUNTY COURT OF LONOKE COUNTY, ARKANSAS

IN THE MATTER OF ANNEXING
CERTAIN TERRITORY CONTIGUOUS TO
THE CITY OF LONOKE, LONOKE COUNTY, ARKANSAS

NO: C-2010-130

FILED
2010 AUG 10 AM 10:18
LONOKE COUNTY CLERK
Dawn Porterfield
Dawn Porterfield

AMENDED ORDER GRANTING ANNEXATION

On this date, comes before this Court a request by the Petitioners for an amendment to this Court's earlier Order dated June 8, 2010, correcting the legal description of certain lands previously ordered to be annexed into the City of Lonoke. The Court finds as follows:

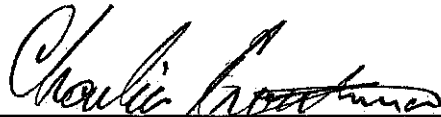
1. That the change in the legal description is a mere technicality that does not affect the substance of this Court's previous Order. Therefore, no additional proceedings or notice is required.
2. Therefore the Court substitutes the corrected survey attached as Exhibit A for the previous incorrect survey attached to the Court's original Order in this matter.
3. Further, the Court substitutes the following legal corrected legal description to read as follows:

A tract of land located in the NE ¼, SW ¼, Section 8, T-2-N, R-8-W, Lonoke County, Arkansas more particularly described as:

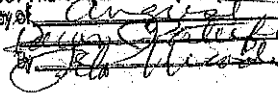
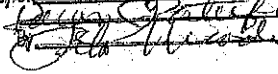
Commencing at the SW corner of Section 8, T-2-N, R-8-W, Lonoke County, Arkansas; Run East 2128.2 feet, Thence North 1320.1 feet to a point on the East Right of Way of Dee Dee Lane, Thence N89°29'31"W 60 feet to the Point of Beginning, being the SE corner of the tract, Thence N89°29'31"W 726.2 feet to a point on the Quarter Section Line, Thence N01°09'07"E 1339.2 to the NW Corner of the NE¼ of the SW¼ of Section 8, Thence S89°29'31"E 711.8 feet, Thence S0°32'11"W 1339.3 feet to the Point of Beginning containing about 22.1 acres.

This Order is in full force and effect from the date of this Order.

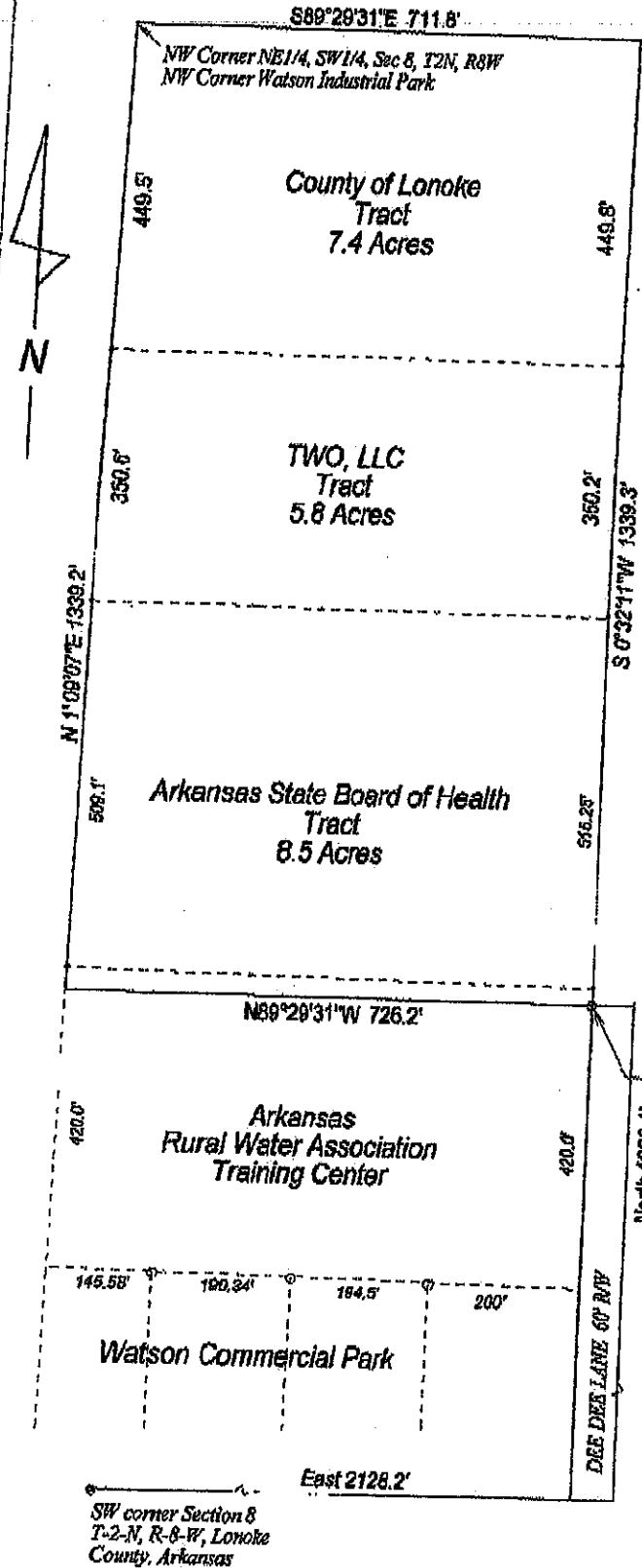
SO ORDERED this 10 day of August, 2010.



Judge Charlie Troutman, County Judge, Lonoke County

CERTIFIED COPY
STATE OF ARKANSAS, COUNTY OF LONOKE
I, Dawn Porterfield, County Clerk within and to the County and State aforesaid, do hereby certify that the annexed and foregoing instrument of writing is a true and correct copy of amended order Recorded on this 10 day of August, 2010 Recorded Book Vol. 13 Page 702
IN TESTIMONY WHEREOF I have hereunto set my hand and affixed the seal of said Court on the 10 day of August, 2010

Dawn Porterfield, Clerk

Deputy Clerk

RECORDED
BOOK 13 PAGE 702



Watson Industrial Park

FILED
 2010 AUG 10 AM 10:18
 LONoke COUNTY CLERK
 Dawn Porterfield
 BY *[Signature]*

**AREA TO BE ANNEXED BY
 THE CITY OF LONOKE, ARKANSAS**

PROPERTY DESCRIPTION

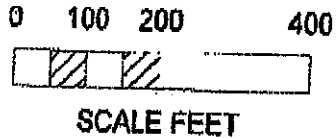
A tract of land located in the NE 1/4, SW 1/4, Section 8, T-2-N, R-8-W, Lonoke County, Arkansas more particularly described as:

Commencing at the SW corner of Section 8, T-2-N, R-8-W, Lonoke, County, Arkansas; Run East 2128.2 feet, Thence North 1320.1 feet to a point on the East Right of Way of Dee Dee Lane, Thence N69°29'31"W 60.0 feet to the Point of Beginning, being the SE corner of the tract, Thence N89°29'31"W 726.2 feet to a point on the Quarter Section Line, Thence N01°09'07"E 1339.2 feet to the NW Corner of the NE 1/4 of the SW 1/4 of Section 8, Thence S89°29'31"E 711.8 feet, Thence S0°32'11"W 1339.3 feet to the Point of Beginning containing about 22.1 acres.

Point of Beginning

Watson Industrial Park

CERTIFIED COPY
 STATE OF ARKANSAS, COUNTY OF LONOKE
 I, Dawn Porterfield, County Clerk within and to the County and State aforesaid, do hereby certify that the annexed and foregoing instrument of writing is a true and correct copy of Book 13, Page 703 Recorded on this 10 day of August, 2010, Recorded Book Vol. 13, Page 703
 IN TESTIMONY WHEREOF I have hereunto set my hand and affixed the seal of said Court on the 10 day of August, 2010.
 By *[Signature]* Clerk
[Signature] Deputy Clerk



Sullivan & Associates
 North Little Rock, AR 72116
 501-351-5940

RECORDED

BOOK 13 PAGE 703

CORRECTED¹ ORDINANCE NO. 603

**AN ORDINANCE ACCEPTING CERTAIN ANNEXED PROPERTIES
INTO THE CITY LIMITS OF LONOKE,
DECLARING AN EMERGENCY AND FOR OTHER PURPOSES**

FILED
AUG 10 2010
LONOKE CO. CLERK DAWN PORTERFIELD
BY *[Signature]*

**BE IT ORDAINED BY THE CITY COUNCIL OF THE CITY OF LONOKE,
ARKANSAS:**

SECTION 1: Wherefore by petition method, the landowners in certain real property located within Lonoke County and contiguous to the municipal boundaries of the City of Lonoke have petitioned to be annexed into the City of Lonoke.

SECTION 2: The petitioners presented to the City Council that they have complied with the requirements of petitioning for annexation, presenting the matter before the County Judge and presenting the matter at public hearings. No objections have been received and no law suits have been filed to block the annexation.

SECTION 3: The County Judge issued an Order for Annexation June 8, 2010. Arkansas law §14-40-604 requires that the Annexation not become effective for 30 days following the Judge's Order. That effective date is July 8, 2010. Thus the effective date of this Annexation shall be set at July 8, 2010.

SECTION 4: It is in the best interest of the health, safety and welfare of the citizens of Lonoke that the following land be annexed into and become part of the City of Lonoke, Arkansas:

A tract of land located in the NE ¼, SW ¼, Section 8, T-2-N, R-8-W, Lonoke County, Arkansas more particularly described as:

Commencing at the SW corner of Section 8, T-2-N, R-8-W, Lonoke County, Arkansas; Run East 2128.2 feet, Thence North 1320.1 feet to a point on the East Right of Way of Dee Dee Lane, Thence N89°29'31"W 60 feet to the Point of Beginning, being the SE corner of the tract, Thence N89°29'31"W 726.2 feet to a point on the Quarter Section Line, Thence N01°09'07"E 1339.2 feet to the NW Corner of the NE¼ of the SW¼ of Section 8, Thence S89°29'31"E 711.8 feet, Thence S0°32'11"W 1339.3 feet to the Point of Beginning containing about 22.1 acres.

¹ Ordinance 603, enacted June 14, 2010, contained technical errors in the legal description and attached survey. This Corrected Ordinance shall be substituted for Ordinance 603.

RECORDED
BOOK 13 PAGE 704

A copy of the area to be annexed is attached hereto.

SECTION 5: The annexed area shall be a part of Ward Two (2). The annexed area shall be zoned General Commercial.

SECTION 6: The City shall accept all designated road ways as City Streets and shall maintain maintenance thereof.

SECTION 7: The Clerk shall certify two copies of this Ordinances accepting annexation to the County Clerk of Lonoke County, Arkansas. The City of Lonoke shall provide municipal services to the annexed area of fire, police and sewer.

SECTION 8: This Ordinance being necessary for the immediate protection of the public health, safety, and welfare, an emergency is hereby declared to exist, and this Ordinance shall be in full force and effect from and after July 8, 2010.

COORRECTED ORDINANCE PASSED this 9th day of August, 2010.

ATTEST:

Regina Ibbotson
Regina Ibbotson

APPROVED:

Wayne McGee
Wayne McGee, Mayor

CERTIFIED COPY

STATE OF ARKANSAS, COUNTY OF LONOKE

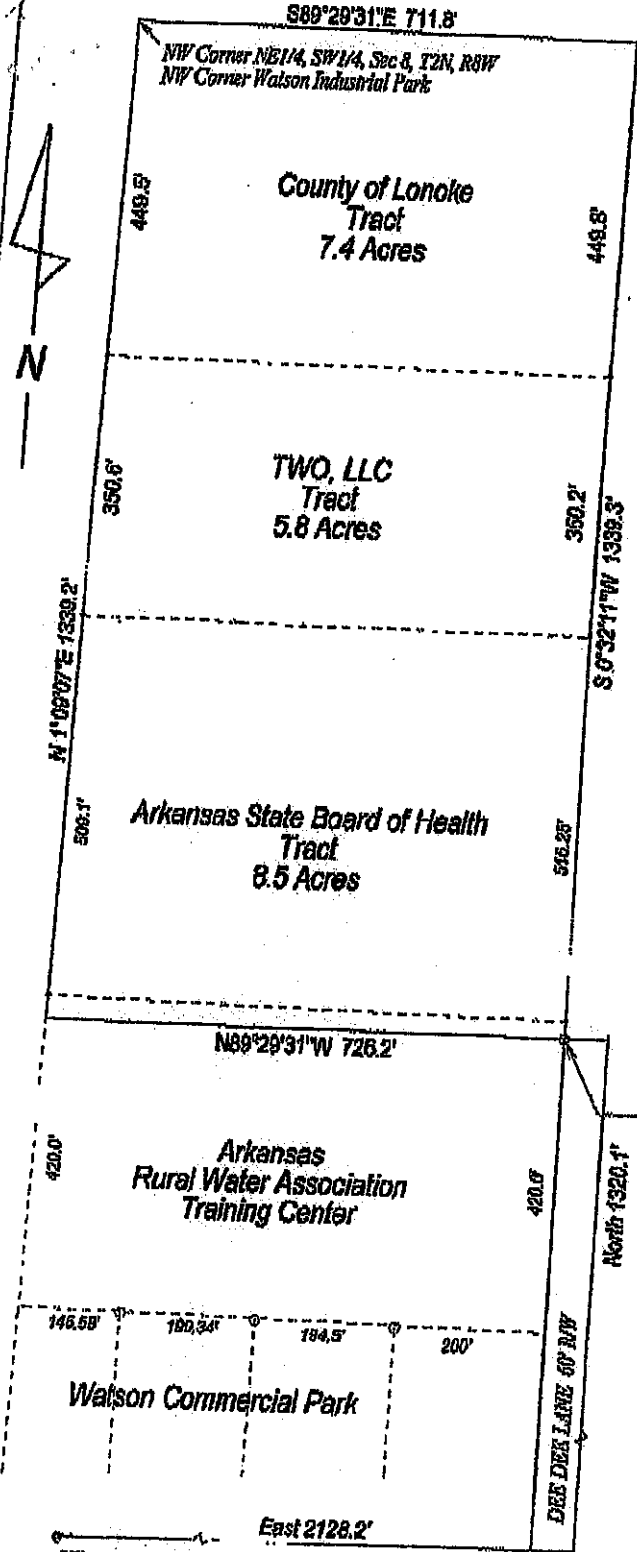
I, Dawn Porterfield, County Clerk within and to the County and State aforesaid, do hereby certify that the annexed and foregoing instrument of writing is a true and correct copy of Ordinance 692 Recorded on this 10 day of August, 2010 Recorded Book Vol. 13 Page 705

IN TESTIMONY WHEREOF I have hereunto set my hand and affixed the seal of said Court on the 17 day of August, 2010

Dawn Porterfield
Deputy Clerk

RECORDED

BOOK 13 PAGE 705



Watson Industrial Park

**AREA TO BE ANNEXED BY
THE CITY OF LONOKE, ARKANSAS**

PROPERTY DESCRIPTION

A tract of land located in the NE 1/4, SW 1/4, Section 8, T-2-N, R-8-W, Lonoke County, Arkansas more particularly described as:

Commencing at the SW corner of Section 8, T-2-N, R-8-W, Lonoke, County, Arkansas; Run East 2128.2 feet, Thence North 1320.1 feet to a point on the East Right of Way of Dee Dee Lane, Thence N69°29'31"W 60.0 feet to the Point of Beginning, being the SE corner of the tract, Thence N89°29'31"W 726.2 feet to a point on the Quarter Section Line, Thence N01°09'07"E 1339.2 feet to the NW Corner of the NE 1/4 of the SW 1/4 of Section 8, Thence S89°29'31"E 711.8 feet, Thence S0°32'11"W 1339.3 feet to the Point of Beginning containing about 22.1 acres.

Point of Beginning

Watson Industrial Park

CERTIFIED COPY

STATE OF ARKANSAS, COUNTY OF LONOKE
 I, Dawn Porterfield, County Clerk within and to the County and State aforesaid, do hereby certify that the annexed and foregoing instrument of writing is a true and correct copy of plat C-2010-0730 recorded on this 11 day of August, 2010, recorded Book Vol 12 Page 706
 IN TESTIMONY WHEREOF I have hereunto set my hand and affixed the seal of said Court on the 11 day of August, 2010
 By [Signature] Deputy Clerk

Sullivan & Associates

North Little Rock, AR 72116
 501-351-5940

RECORDED

BOOK 13 PAGE 706