

Geometry Correction: City of Lonoke
July 2019

City: Lonoke
Mayor: Trae Reed, III

Arkansas Code 14-40-101.

Before an entity undertakes an annexation, consolidation, or detachment proceeding under this chapter, the entity shall coordinate with the Arkansas Geographic Information Systems Office for preparation of legal descriptions and digital mapping for the relevant annexation, consolidation, and detachment areas.

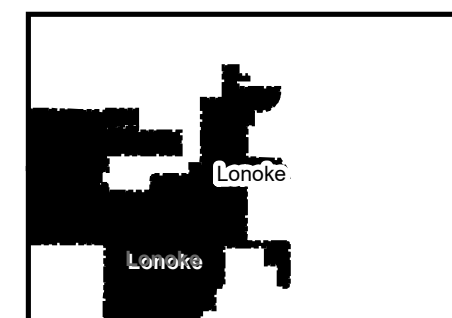
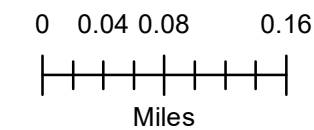
The map contained herein, is evidence, the entity has met requirements of Act 914 of 2015

**CURRENT
CITY
LIMITS**

**CURRENT
CITY
LIMITS**

Remove

-  Historic Annex
-  Sections
-  Parcels
-  Minor Road
-  Existing City



Jennifer Wheeler

From: Regina Ibbotson <DepCityClerk@cityoflonoke.com>
Sent: Monday, July 08, 2019 2:33 PM
To: Jennifer Wheeler
Subject: RE: Census Missing Annex - City of Lonoke

Jennifer-

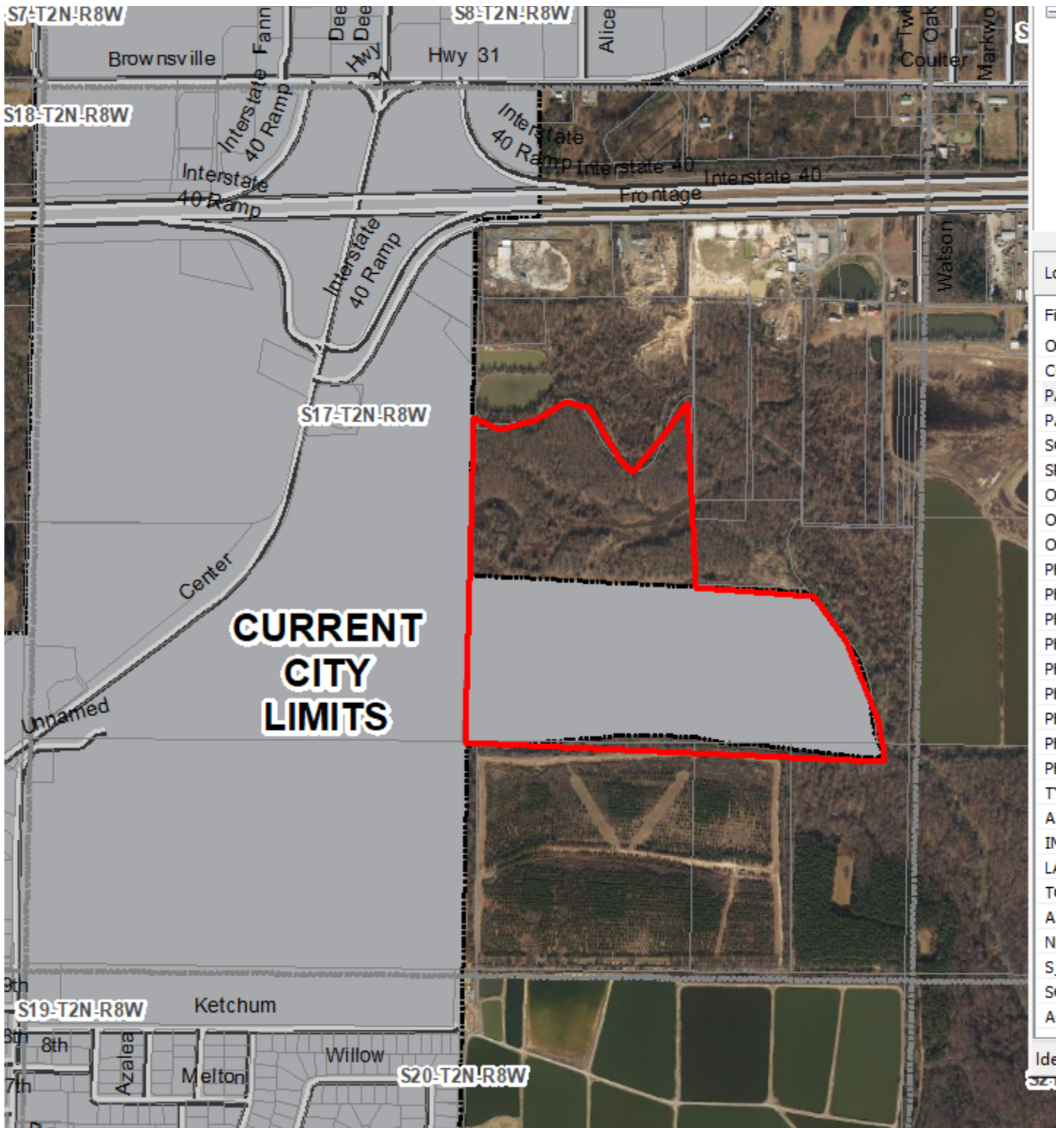
I think the Census Bureau may have it correct. I found the deed where the land for the second lagoon was purchased. There is a portion of it that is wooded with a deed restriction on it, and I cannot find where it was ever annexed. I am wondering if someone just assumed that it was in the city limits since the city owns it and drew the boundary lines showing it was in the city.

Regina

From: Jennifer Wheeler <Jennifer.Wheeler@arkansas.gov>
Sent: Monday, July 8, 2019 12:21 PM
To: cityoflonoke@sbcglobal.net
Subject: Census Missing Annex - City of Lonoke

Regina,

It was nice speaking with you. As we discussed, Census may be missing part of a historic annexation in Lonoke. And as you mentioned, there may also be an issue with the parcel as it looks like the whole parcel is owned by the city while you say that only half might be owned by the city. Please see the image below. The gray is what the state has for the city limits and what Census is missing. The red is the entire parcel showing to be owned by the city. In order for my office to get the gray part corrected with the Census, we have to show them the annexation docs. I wasn't able to find them while researching the Secretary of State archives. Do you guys have this on file? If not, I can try one more resource – Arkansas Department of Transportation. Thank you in advance for your help!



Jennifer Wheeler – GIS Analyst
 Arkansas GIS Office
 1 Capitol Mall Ste 6D
 Little Rock, AR 72201
 501.682.2929 Office
 501.454.9524 Mobile
 501.407.0790 Fax
jennifer.wheeler@arkansas.gov Email
<http://www.gis.arkansas.gov> Web

Parcels Inside and Outside of City

S7-T2N-R8W

S8-T2N-R8W

S9-T2N-R8W

280

S17-T2N-R8W

S16-T2N-R8W

001

781

780

S19-T2N-R8W

S20-T2N-R8W

S21-T2N-R8W

001 - County / 780 - City

