

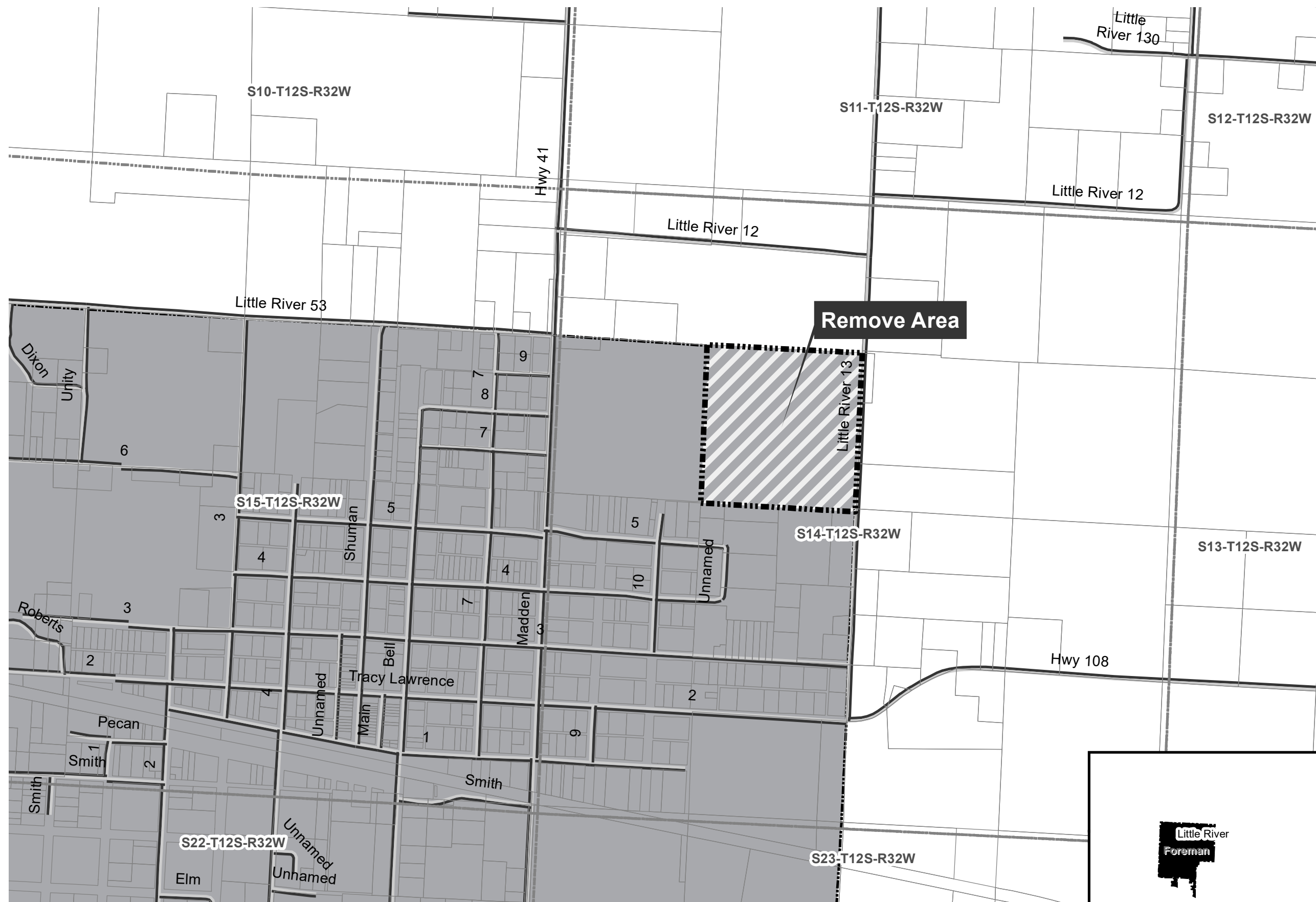
Geometry Correction: City of Foreman  
July 2019

City: Foreman  
Mayor: Bill Harp

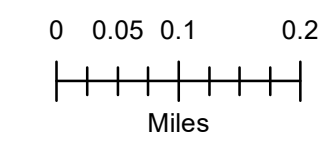
Arkansas Code 14-40-101.

Before an entity undertakes an annexation, consolidation, or detachment proceeding under this chapter, the entity shall coordinate with the Arkansas Geographic Information Systems Office for preparation of legal descriptions and digital mapping for the relevant annexation, consolidation, and detachment areas.

The map contained herein, is evidence, the entity has met requirements of Act 914 of 2015



- Historic Annex
- Sections
- Parcels
- Minor Road
- Existing City



## Jennifer Wheeler

---

**From:** Theresa Woods <foreman@whiti.net>  
**Sent:** Monday, July 22, 2019 2:34 PM  
**To:** Jennifer Wheeler  
**Subject:** RE: City of Foreman - Census

Hey Jennifer!

I do remember you. That area in red is not in the city limits of Foreman. I'm not sure why the state has that listed. That is the property on the back side of our recreation park but it is not in the city limits.

Give me a shout if I need to do anything else.

Have a great day,  
Theresa

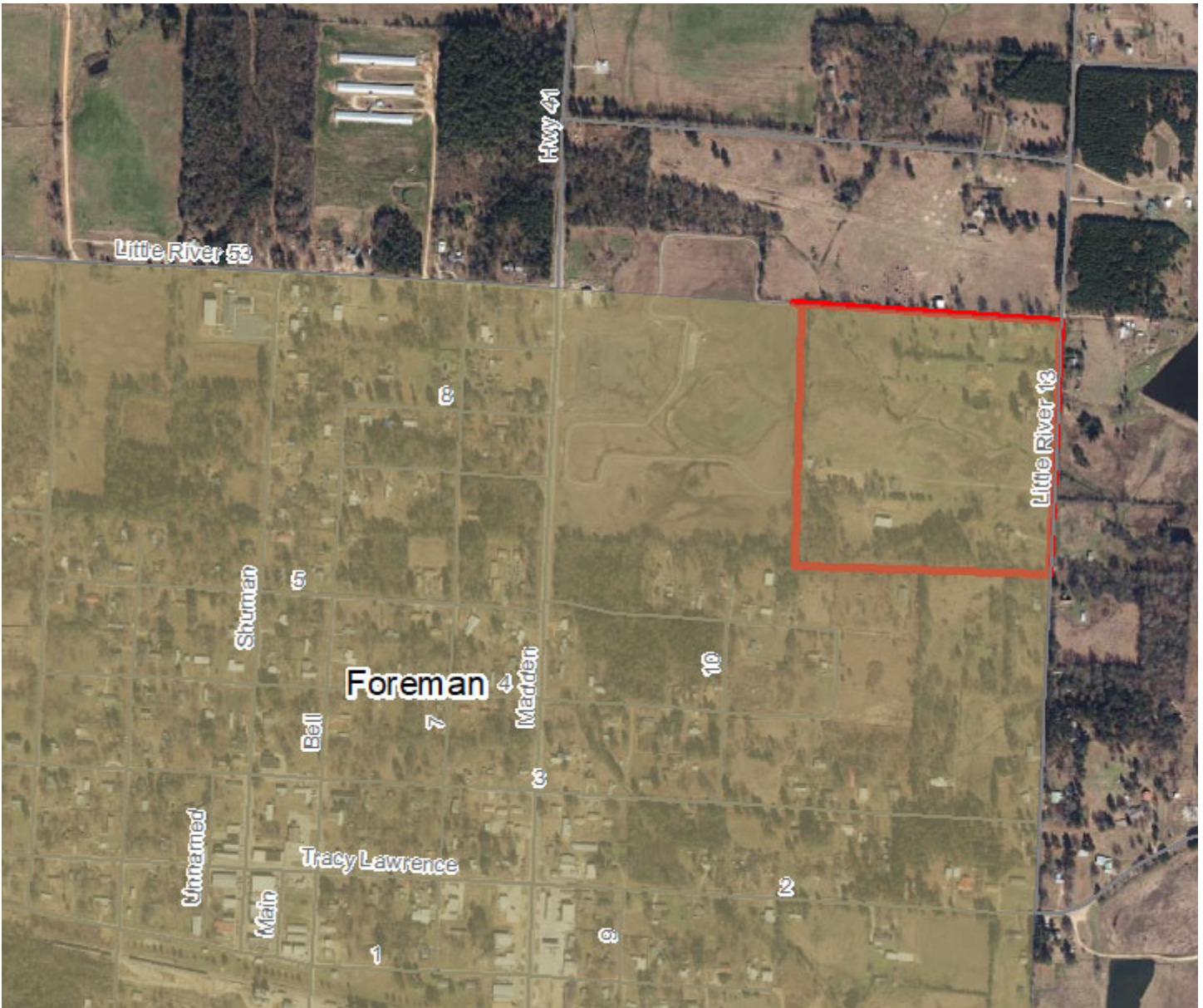
---

**From:** Jennifer Wheeler [mailto:Jennifer.Wheeler@arkansas.gov]  
**Sent:** Monday, July 22, 2019 12:42 PM  
**To:** foreman@whiti.net  
**Subject:** City of Foreman - Census

Theresa,

Remember me?! Hope all is well with you. I'm not sure if we ever discussed this, but I am working on making sure Census has the correct city limits for all of the cities in Arkansas and ran into a spot in Foreman. Please see the image below. The state currently shows the area in red to be inside of the city limits while the Census does not. To the best of your knowledge, is that area part of the city? If it is, do you happen to have the ordinance or order that brought it in? Census won't take our update unless we have some supporting documentation.

Thank you in advance for your help with this. We are just about done with our updates to Census. Foreman was missing another area but I was able to find the ordinance for it filed at the Secretary of State's office. I wasn't able to find anything for this one.



**Jennifer Wheeler – GIS Analyst**

Department of Transformation & Shared Services  
Arkansas GIS Office  
1 Capitol Mall Ste 6D  
Little Rock, AR 72201  
501.682.2929 Office  
501.454.9524 Mobile  
501.407.0790 Fax  
[jennifer.wheeler@arkansas.gov](mailto:jennifer.wheeler@arkansas.gov) Email  
<http://www.gis.arkansas.gov> Web



Virus-free. [www.avg.com](http://www.avg.com)