

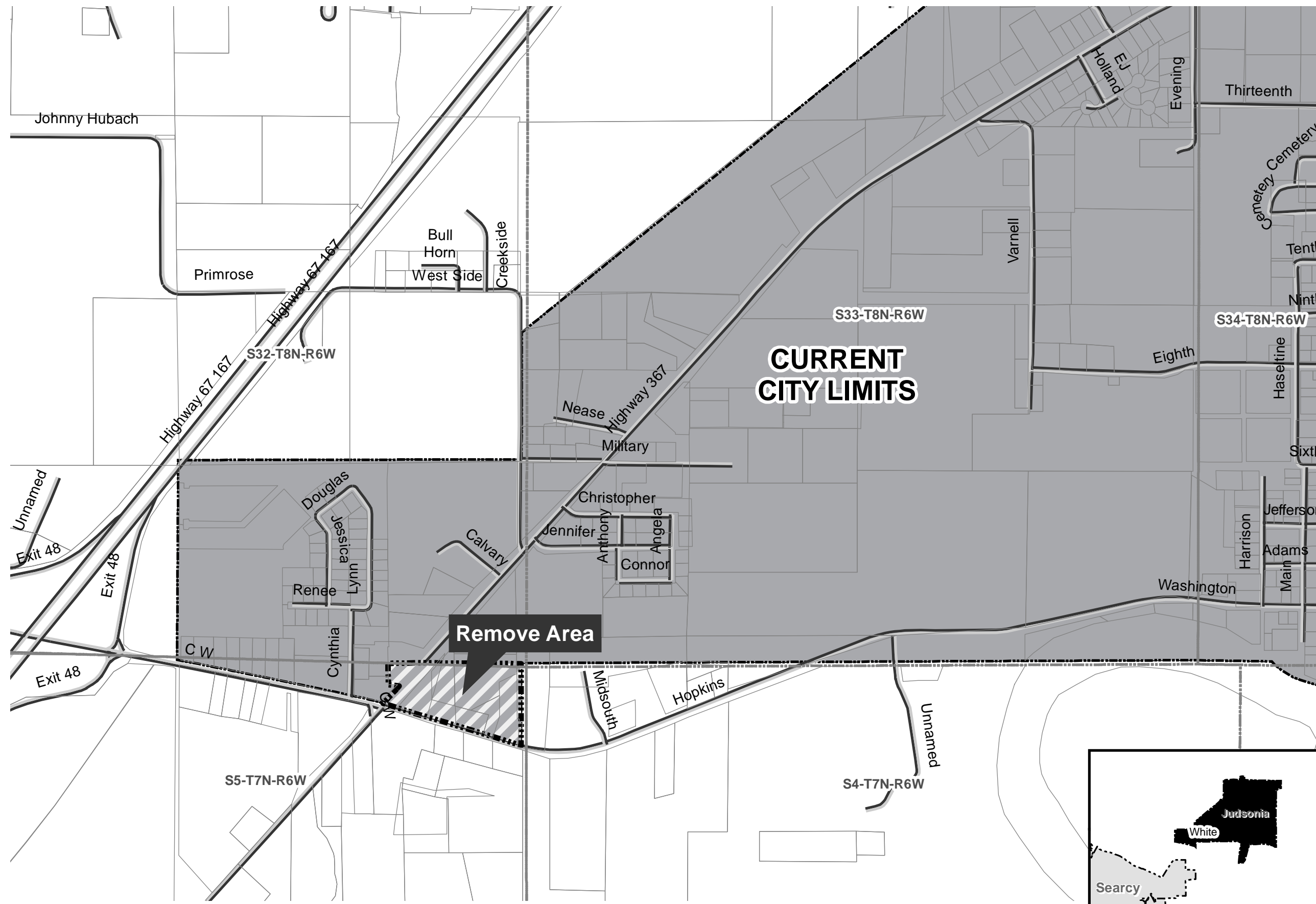
**Boundary Correction: City of Judsonia  
December 2019**

City: Judsonia  
Mayor: Stan Robinson

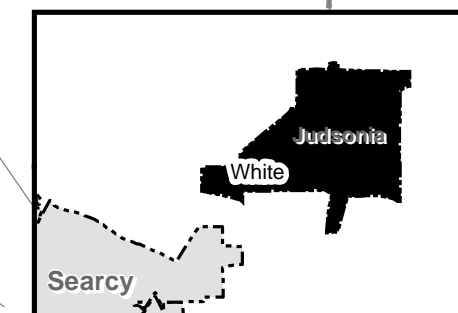
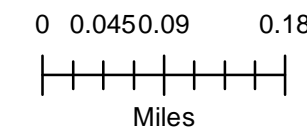
Arkansas Code 14-40-101.

Before an entity undertakes an annexation, consolidation, or detachment proceeding under this chapter, the entity shall coordinate with the Arkansas Geographic Information Systems Office for preparation of legal descriptions and digital mapping for the relevant annexation, consolidation, and detachment areas.

The map contained herein, is evidence, the entity has met requirements of Act 914 of 2015



- Sections
- Parcels
- Boundary Correction
- Minor Road
- Existing City
- Neighboring City



## Jennifer Wheeler

---

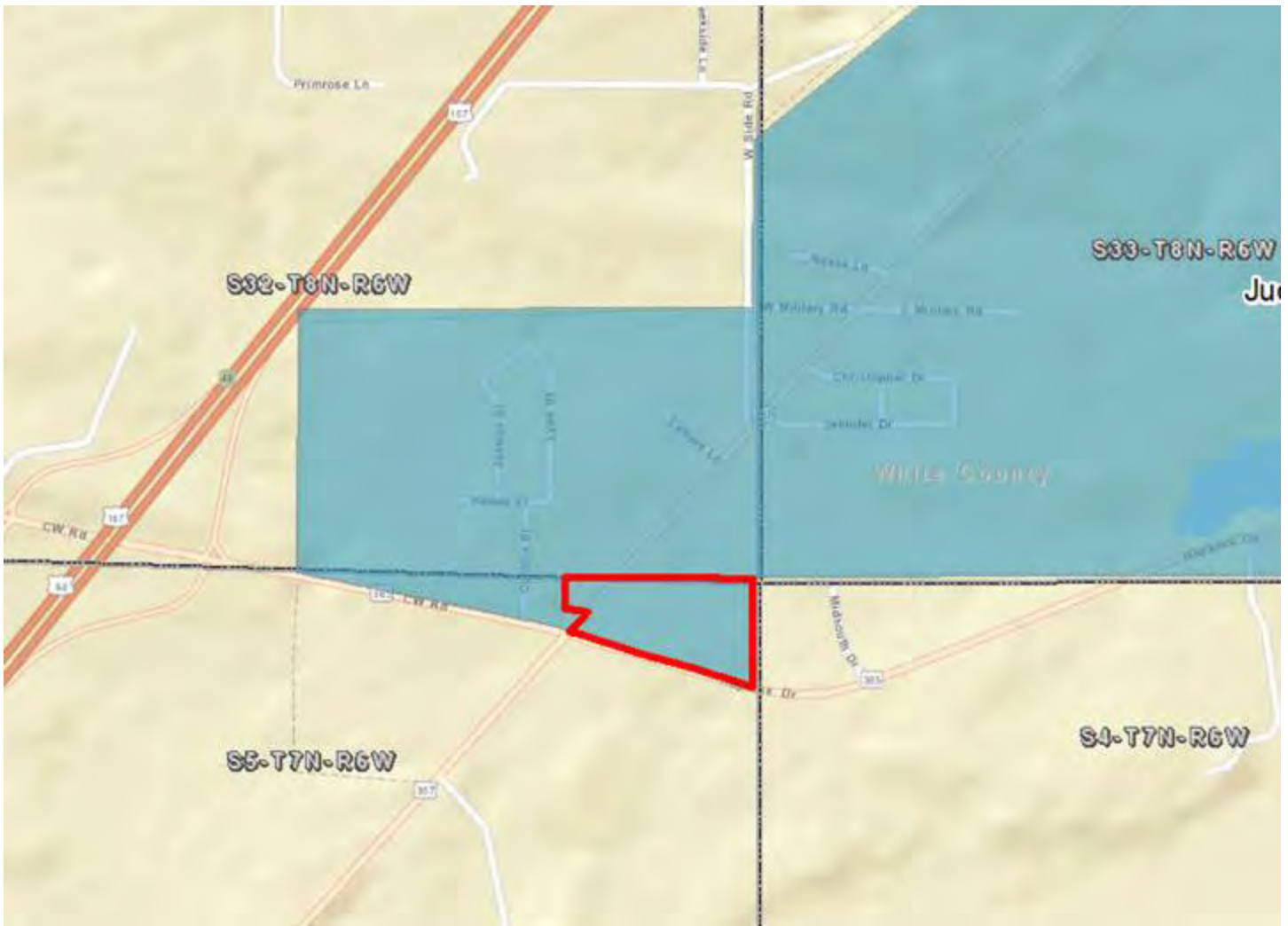
**From:** City of Judsonia <cityof\_judsonia@yahoo.com>  
**Sent:** Monday, November 25, 2019 4:28 PM  
**To:** Jennifer Wheeler  
**Subject:** Re: Census Missing Annexations - City of Judsonia

I have been told that area is not in city limits.

On Monday, November 25, 2019, 12:33:33 PM CST, Jennifer Wheeler <jennifer.wheeler@arkansas.gov> wrote:

Our office is responsible for mapping annexations for the state and reporting those to the US Census Bureau. While working to ensure that Census' city boundaries are correct running up to the 2020 Census, we found an area in Judsonia that is missing from their maps when compared to our maps. Please see the image below. In order for Census to correct it, they either need the ordinance or court order that brought it in. Do you happen to have access to the document that brought this area in?

Census is missing the area in red



**Jennifer Wheeler – GIS Analyst**

Department of Transformation & Shared Services  
Arkansas GIS Office  
1 Capitol Mall Ste 6D  
Little Rock, AR 72201  
501.682.2929 Office

501.454.9524 Mobile  
[jennifer.wheeler@arkansas.gov](mailto:jennifer.wheeler@arkansas.gov) Email  
<https://www.gis.arkansas.gov> Web