



JOHN THURSTON
ARKANSAS SECRETARY OF STATE

February 19, 2020

The Hon. Terri Hollingsworth
Pulaski County Clerk
401 West Markham, Suite 100
Little Rock, AR 72201

Re: City of Jacksonville Annexation Ordinance 1615

Dear Ms. Hollingsworth,

This letter acknowledges receipt and filing of the following notice of municipal boundary change by the Office of the Arkansas Secretary of State:

Filing Type: Annexation with Detachment from adjoining city § A.C.A 14-40-2101 (at city's request)

Effective Date: 11/04/2019

County: Pulaski

City Ordinance: 1615

County Court Order: N/A

City: Jacksonville

Dated: 10/3/2019

Date Filed: N/A

A file marked copy of the ordinance and exhibits submitted to our Office are enclosed. By copy of this letter (and its enclosures), the Secretary of State hereby notifies the appropriate mapping authorities for Arkansas. Please retain these copies as official record of the filing of the municipal change by the Arkansas Secretary of State.

If you have any questions or concerns regarding this filing, please do not hesitate to contact our Office at 501-683-3717.

Sincerely,

A handwritten signature in black ink that reads "Shantell McGraw".

Shantell McGraw
Elections Division

cc: Arkansas Geographic Information Systems Office (w/encl)
Arkansas Department of Transportation Mapping Department (w/encl)
Department of Finance and Administration (w/encl)
Arkansas Public Service Commission (w/encl)
Arkansas Economic Development Institute (w/encl)
The Hon. Bob Johnson, Mayor of Jacksonville (w/encl)
Ms. Stephanie Friedman, Jacksonville City Attorney (w/encl)



Arkansas Secretary of State

John Thurston Arkansas Secretary of State, 500 Woodlane Ave, Little Rock, AR 72201-1094

Municipal Boundary Change Checklist

Act 655 of 2017 and A.C.A. §14-40-103

County: Pulaski City/Town: Jacksonville

City Ordinance/Resolution No: 1615 Date approved: 10/3/2019

County Court Case No: _____ Date Order Filed: _____

Type: Annexation with Detachment from adjoining city at city request A.C.A. 14-40-2101

Date Change Effective: 11/4/2019 Set by: Municipal Ordinance Emergency Clause Court Default
(Required by Act 655 of 2017)

For Circuit Court Challenge: Date Order Filed: _____ Upheld Overturned Other *(attach explanation)*

Please indicate which ward(s) the territory will be assigned to: Ward 4
(See A.C.A § 14-40-203)

Initiating party:

All Landowners Majority Landowners Municipal Governing Body State Other _____

Supporting Documentation attached *(check all that apply)*:

- File marked copy of City Ordinance/Resolution *(required)*
- File marked copy of County Court Order or certified annexation election results *(required except for A.C.A. §14-40-501)*
- Copy of Arkansas GIS approved printed map and certification letter *(required)*
- Proof of Publication for all Legal Notices *(include Hearing, Election, and City Ordinance/Resolution notices)*
- File marked copy of Petition Part *(if applicable)*
- File marked copy of Complaint and final Circuit Court Order *(Court Challenge only)*

Municipal Contact:

Name: Stephanie Friedman Title: City Attorney

Street Address: 1 Municipal Drive

City: Jacksonville St: AR Zip code: 72076

Complete one form per ordinance/resolution, attach it as a cover page to the supporting document set and submit to the County Clerk's Office within 45 days of the Effective Date as required by Act 655 of 2017

County Official:

Signature: Title: Deputy Clerk

Date: 11/30/2020

Pursuant to Act 655 of 2017, County Officials must submit a file-marked copy of municipal boundary change documents within 30 days of receipt to: Arkansas Secretary of State, Attn: Municipal Boundary Filing, 500 Woodlane Ave Suite 256, Little Rock, AR 72201-1094

FILED

FEB 19 2020

Arkansas Secretary of State

Rev. 2/2019

Office of the Arkansas Secretary of State use only

Received by:

FILED

OCT 11 2019

TERRI HOLLINGSWORTH
CIRCUIT COUNTY CLERK

ORDINANCE NO. 1615 (#22-2019)

AN ORDINANCE APPROVING THE DETACHMENT OF LANDS FROM THE CITY OF JACKSONVILLE TO BE ANNEXED INTO THE CITY OF SHERWOOD; AND FOR OTHER PURPOSES.

WHEREAS, The City of Sherwood, Arkansas, pursuant to Ark. Code Sec. 14-40-2101, adopted Sherwood City Ordinance 2261 on July 22nd, 2019. The Ordinance called for the detachment of two (2) properties from the City of Jacksonville to be annexed into the City of Sherwood, and

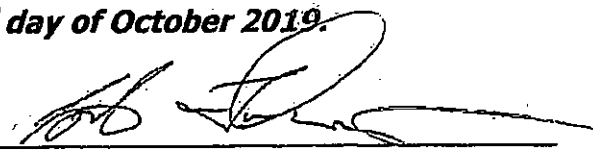
WHEREAS, the required public hearing was conducted by the City of Jacksonville on September 19th, 2019 at 6:11 p.m. regarding the proposed detachment.

NOW, THEREFORE, BE IT ORDAINED BY THE CITY COUNCIL OF JACKSONVILLE, ARKANSAS;

SECTION ONE: Sherwood City Ordinance 2261, attached hereto as Exhibit 1 and incorporated herein by reference provides the descriptions of the two (2) parcels of property the City of Sherwood requests be detached from the City of Jacksonville to be annexed into the City of Sherwood.

SECTION TWO: The City of Jacksonville hereby approves the detachment of the two (2) parcels from the City of Jacksonville to be annexed into the City of Sherwood.

ADOPTED on this 3rd day of October 2019.


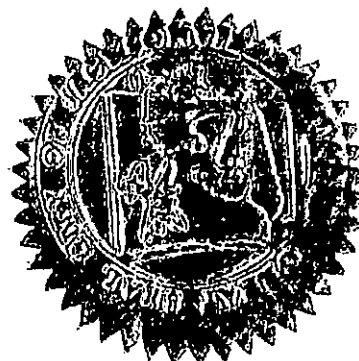


BOB JOHNSON, MAYOR

ATTEST:


SUSAN DAVITT, CITY CLERK

APPROVED AS TO FORM:


STEPHANIE FRIEDMAN, CITY ATTORNEY

ORDINANCE NO. 1608 (#15-2019)

AN ORDINANCE BY THE CITY OF JACKSONVILLE ARKANSAS CALLING FOR THE SIMULTANEOUS DETACHMENT AND ANNEXATION OF LAND CURRENTLY LOCATED IN SHERWOOD, PULASKI COUNTY ARKANSAS, PURSUANT TO ARK. CODE ANN. §14-40-2101.

WHEREAS, Ark. Code Ann. §14-40-2101 provides a procedure by which property may be simultaneously detached from one municipality and annexed into an adjoining municipality; and

WHEREAS, the City of Jacksonville, Arkansas, desires to detach and annex the following described properties ("the Properties") currently located in the City of Sherwood, Pulaski County, Arkansas:

Property 1 (Heslep). PART NW NE SECTION 22-3N-11 MPDA BEG NW COR NW NE TH S88*15'53"E ALONG THE LRAFB BOUNDARY 989.06' S00*52'42"W660.61' N88*23'31"W282.35' S00*52'42"W617.24' TO THE NORTH R/W GENERAL SAMUELS ROAD TH N88*23'48"W ALONG ROAD R/W 481.74' N00*31'18"E159.96' N88*19'24"W100' S01*28'29"W160' TO THE NORTH R/W GENERAL SAMUELS ROAD N88*25'00"W ALONG ROAD R/W 128.09' TH N01*00'48"E1280' TO THE POB, INCLUDING ALL ADJOINING PUBLIC RIGHTS OF WAY.

Property 2 (Jacksonville Christian Fellowship). PT NW NE SECTION 22-31-11 MPDA COM NW COR NW NE SECTION 22 MARKING THE LRAFB BOUNDARY TH S88*15'54"E989.06' AL SAID BOUNDARY S0*52'42"W660.61' FOR POB TH CONT S0*52'42"W617.24' TO N R/W GENERAL SAMUELS RD TH N88*23'31"W282.35' N0*52'42"E617.24' S88*23'31"E282.35' TO POB, INCLUDING ALL ADJOINING PUBLIC RIGHTS OF WAY.

Property 3 (Lilac LLC). SE NW INCLUDING ALL ADJOINING PUBLIC RIGHTS OF WAY 22-3N-11W S1/2 NE INCLUDING ALL ADJOINING PUBLIC RIGHTS OF WAY 22-3N-11W

Property 4 (Zhang Jun Qi). PT NW NE BEG 128.71'E OF SW COR NW NE E100'N200'W100'S200' TO BEG 22 3N 11W

Property 5 (Westco Inc.). ALL UNPLATTED PART OF SW NW 27 3N 11W INCLUDING ALL ADJOINING PUBLIC RIGHTS OF WAY

-----# 1001002054

ORDINANCE NO. 1608 (#15 - 2019)

Page Two

WHEREAS, a map showing the location of the Properties is attached hereto as Exhibit A and Exhibit B; and

WHEREAS, the City of Jacksonville and Sherwood have reached an agreement relative to the detachment and annexation of the Properties, and the City of Jacksonville stands ready to provide all municipal services to the Properties; and

WHEREAS, the City of Jacksonville, Arkansas, wishes to comply with the provisions of Ark. Code Ann. §14-40-2101;

NOW, THEREFORE, BE IT ORDAINED BY THE CITY COUNCIL FOR THE CITY OF JACKSONVILLE, ARKANSAS:

Section 1: That the Properties described herein and in the attached Exhibit A and B be simultaneously de-annexed from the City of Sherwood, Arkansas, and annexed into the City of Jacksonville, Arkansas, pursuant to Ark. Code Ann. §14-40-2101;

Section 2: That the City Clerk is hereby directed to send a copy of this ordinance to the governing body of the City of Sherwood, Arkansas, pursuant to Ark. Code Ann. §14-40-2101(a);

Section 3: Pursuant to Ark. Code Ann. §14-40-2101(b)(2), the City of Sherwood, Arkansas, shall conduct a public hearing within sixty (60) days of the date of passage of this ordinance;

Section 4: Pursuant to Ark. Code Ann. §14-40-2101(b)(3), the City Clerk of the City of Jacksonville, Arkansas, is directed to publish a legal notice of the public hearing at least fifteen (15) days prior to the public hearing, and such notice shall set out the legal description of the properties proposed to be detached and annexed;

Section 5: If the City Council for the City of Sherwood, Arkansas, approves the proposed detachment and annexation ordinance, the City of Jacksonville shall proceed to render services to the newly annexed area, pursuant to Ark. Code Ann. §14-40-2101(c)(2);


Section 6: If the City Council for the City of Sherwood Arkansas, approves the proposed detachment and annexation ordinance, and if no suit is brought within thirty (30) days to review the mutual actions of the City of Jacksonville and Sherwood, then the detachment and annexation of the land shall be final,

ORDINANCE NO. 1608 (#15 - 2019)
Page Three

pursuant to Ark. Code Ann. §14-40-2101(d), and the City Clerk of the City of Jacksonville, Arkansas, shall at that time certify a copy of the plat of the annexed properties and a copy of the ordinances passed to the County Clerk of Pulaski County, Arkansas, pursuant to Ark. Code Ann. §14-40-2101(e)(2), who shall forward a copy of each document to the Secretary of State for the State of Arkansas, who shall file and preserve them.

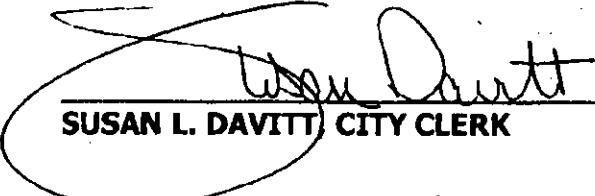
APPROVED AND ADOPTED THIS 15TH DAY OF AUGUST 2019.

CITY OF JACKSONVILLE, ARKANSAS

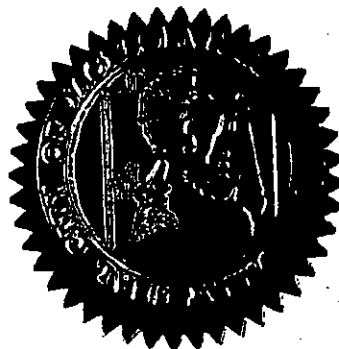


BOB JOHNSON, MAYOR

ATTEST:



SUSAN L. DAVITT, CITY CLERK



APPROVED AS TO FORM:



STEPHANIE FRIEDMAN, CITY ATTORNEY

FILED

OCT 11 2019

**TERRI HOLLINGSWORTH
CIRCUIT COUNTY CLERK**

ORDINANCE NO. 2261

**AN ORDINANCE BY THE CITY OF SHERWOOD
ARKANSAS CALLING FOR THE SIMULTANEOUS
DETACHMENT AND ANNEXATION OF LAND
CURRENTLY LOCATED IN JACKSONVILLE,
PULASKI COUNTY ARKANSAS, PURSUANT TO
ARK. CODE ANN. §14-40-2101.**

WHEREAS, Ark. Code Ann. §14-40-2101 provides a procedure by which property may be simultaneously detached from one municipality and annexed into an adjoining municipality; and

WHEREAS, the City of Sherwood, Arkansas, desires to detach and annex the following described properties ("the Properties") currently located in the City of Jacksonville, Pulaski County, Arkansas:

Property 1. All unplatted part of SE22-3N-11W including all adjoining public rights of way.

Property 2. PT NW NW Lying N&W of HWY 107 EXC 0.47 AC FOR R/W Hwy 107 22-3N-11W

WHEREAS, a map showing the location of the Properties is attached hereto as Exhibit "A"; and

WHEREAS, the City of Sherwood and Jacksonville have reached an agreement relative to the detachment and annexation of the Properties, and the City of Sherwood stands ready to provide all municipal services to the Properties; and

WHEREAS, the City of Sherwood, Arkansas, wishes to comply with the provisions of Ark. Code Ann. §14-40-2101;

NOW, THEREFORE, BE IT ORDAINED BY THE CITY COUNCIL FOR THE CITY OF SHERWOOD, ARKANSAS:

Section 1: That the Properties described herein and in the attached Exhibit "A" be simultaneously de-annexed from the City of Jacksonville, Arkansas, and annexed into the City of Sherwood, Arkansas, pursuant to Ark. Code Ann. §14-40-2101;

Section 2: That the City Clerk is hereby directed to send a copy of this ordinance to the governing body of the City of Jacksonville, Arkansas, pursuant to Ark. Code Ann. §14-40-2101(a);

Section 3: Pursuant to Ark. Code Ann. §14-40-2101(b)(2), the City of Jacksonville, Arkansas, shall conduct a public hearing within sixty (60) days of the date of passage of this ordinance;

Section 4: Pursuant to Ark. Code Ann. §14-40-2101(b)(3), the City Clerk of the City of Sherwood, Arkansas, is directed to publish a legal notice of the public hearing at least fifteen (15) days prior to the public hearing, and such notice shall set out the legal description of the properties proposed to be detached and annexed;

Section 5: If the City Council for the City of Jacksonville, Arkansas, approves the proposed detachment and annexation ordinance, the City of Sherwood shall proceed to render services to the newly annexed area, pursuant to Ark. Code Ann. §14-40-2101(c)(2);

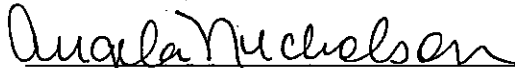
Section 6: If the City Council for the City of Jacksonville Arkansas, approves the proposed detachment and annexation ordinance, and if no suit is brought within thirty (30) days to review the mutual actions of the City of Sherwood and the City of Jacksonville, then the detachment and annexation of the land shall be final, pursuant to Ark. Code Ann.

§14-40-2101(d), and the City Clerk of the City of Sherwood, Arkansas, shall at that time certify a copy of the plat of the annexed properties and a copy of the ordinances passed to the County Clerk of Pulaski County, Arkansas, pursuant to Ark. Code Ann. §14-40-2101(e)(2), who shall forward a copy of each document to the Secretary of State for the State of Arkansas, who shall file and preserve them.

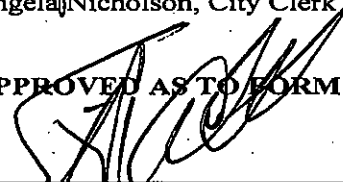
ADOPTED on this 22nd day of July 2019.


Virginia R. Young, Mayor

ATTEST:


Angela Nicholson, City Clerk

APPROVED AS TO FORM:

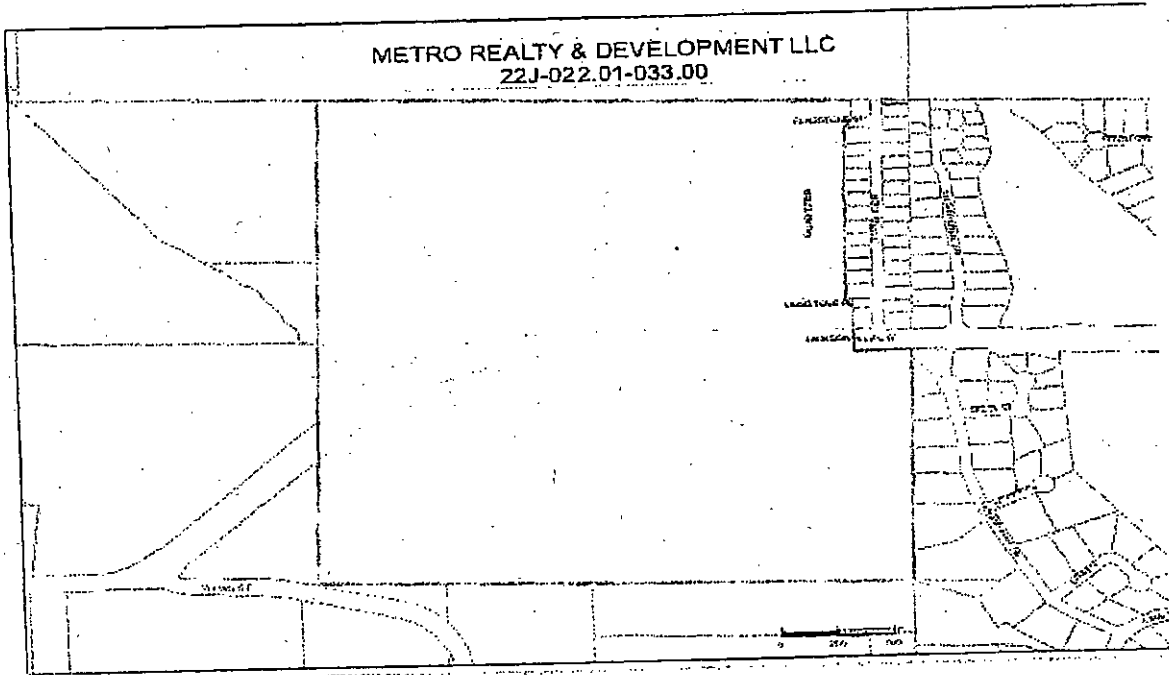

Stephen Cobb, City Attorney

STATE OF ARKANSAS }
COUNTY OF PULASKI } ss.
CITY OF SHERWOOD }

I, Angela Nicholson, City Clerk-Treasurer for the City of Sherwood, Arkansas, do hereby certify that the foregoing instrument is a true and correct copy of the original Ordinance 22161 filed in this office on the 23rd day of July 2019. IN TESTIMONY WHEREOF, I have hereunto set my hand and affixed the seal of the City of Sherwood, Arkansas, this 23rd day of July 2019

Angela Nicholson, City Clerk-Treasurer
By: 

A

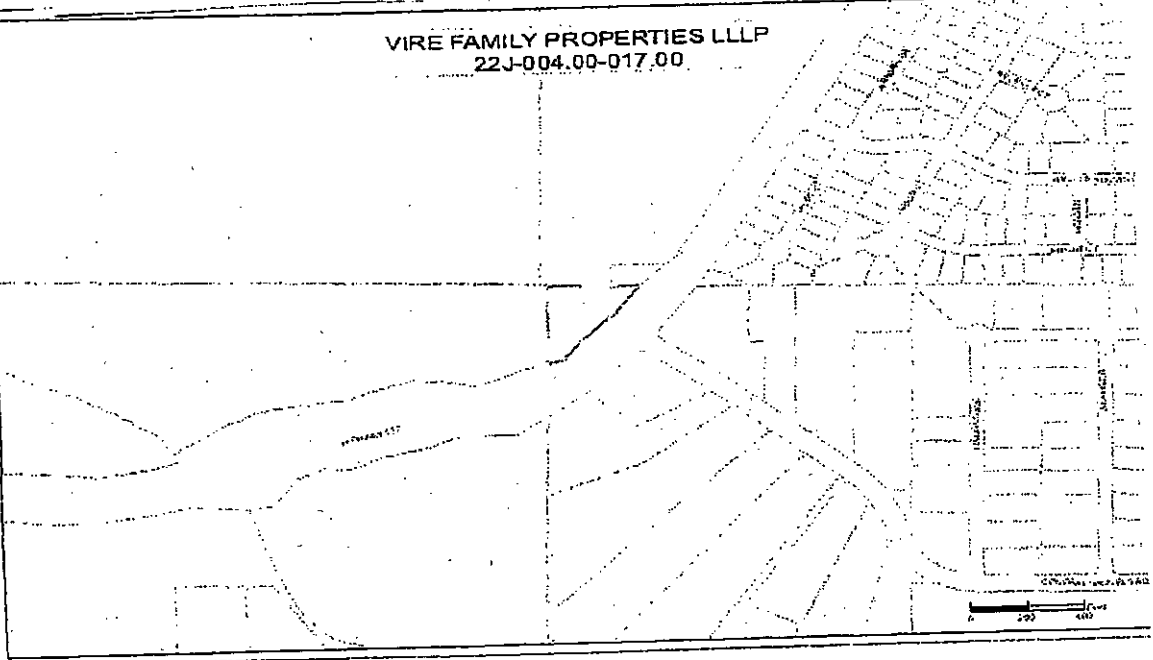


7

ALL UNPLATTED PART OF SE22-JN-11W UNCLONCALL ASSIGNING PUBLIC RIGHTS OF WAY

100 FT

VIRE FAMILY PROPERTIES LLLP
22J-004.00-017.00



2

0 200 400

FILED

OCT 11 2019

**TERRI HOLLINGSWORTH
CIRCUIT COUNTY CLERK**

ORDINANCE NO. 2261

AN ORDINANCE BY THE CITY OF SHERWOOD ARKANSAS CALLING FOR THE SIMULTANEOUS DETACHMENT AND ANNEXATION OF LAND CURRENTLY LOCATED IN JACKSONVILLE, PULASKI COUNTY ARKANSAS, PURSUANT TO ARK. CODE ANN. §14-40-2101.

WHEREAS, Ark. Code Ann. §14-40-2101 provides a procedure by which property may be simultaneously detached from one municipality and annexed into an adjoining municipality; and

WHEREAS, the City of Sherwood, Arkansas, desires to detach and annex the following described properties ("the Properties") currently located in the City of Jacksonville, Pulaski County, Arkansas:

Property 1. All unplatted part of SE22-3N-11W including all adjoining public rights of way.

Property 2. PT NW NW Lying N&W of HWY 107 EXC 0.47 AC FOR R/W Hwy 107 22-3N-11W

WHEREAS, a map showing the location of the Properties is attached hereto as Exhibit "A"; and

WHEREAS, the City of Sherwood and Jacksonville have reached an agreement relative to the detachment and annexation of the Properties; and the City of Sherwood stands ready to provide all municipal services to the Properties; and

WHEREAS, the City of Sherwood, Arkansas, wishes to comply with the provisions of Ark. Code Ann. §14-40-2101;

NOW, THEREFORE, BE IT ORDAINED BY THE CITY COUNCIL FOR THE CITY OF SHERWOOD, ARKANSAS:

Section 1: That the Properties described herein and in the attached Exhibit "A" be simultaneously de-annexed from the City of Jacksonville, Arkansas, and annexed into the City of Sherwood, Arkansas, pursuant to Ark. Code Ann. §14-40-2101;

Section 2: That the City Clerk is hereby directed to send a copy of this ordinance to the governing body of the City of Jacksonville, Arkansas, pursuant to Ark. Code Ann. §14-40-2101(a);

Section 3: Pursuant to Ark. Code Ann. §14-40-2101(b)(2), the City of Jacksonville, Arkansas, shall conduct a public hearing within sixty (60) days of the date of passage of this ordinance;

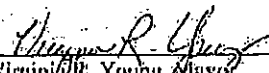
Section 4: Pursuant to Ark. Code Ann. §14-40-2101(b)(3), the City Clerk of the City of Sherwood, Arkansas, is directed to publish a legal notice of the public hearing at least fifteen (15) days prior to the public hearing, and such notice shall set out the legal description of the properties proposed to be detached and annexed;

Section 5: If the City Council for the City of Jacksonville, Arkansas, approves the proposed detachment and annexation ordinance, the City of Sherwood shall proceed to render services to the newly annexed area, pursuant to Ark. Code Ann. §14-40-2101(e)(2);

Section 6: If the City Council for the City of Jacksonville Arkansas, approves the proposed detachment and annexation ordinance, and if no suit is brought within thirty (30) days to review the mutual actions of the City of Sherwood and the City of Jacksonville, then the detachment and annexation of the land shall be final, pursuant to Ark. Code Ann.

§14-40-2101(d), and the City Clerk of the City of Sherwood, Arkansas, shall at that time certify a copy of the plat of the annexed properties and a copy of the ordinances passed to the County Clerk of Pulaski County, Arkansas, pursuant to Ark Code Ann. §14-40-2101(c)(2), who shall forward a copy of each document to the Secretary of State for the State of Arkansas, who shall file and preserve them.

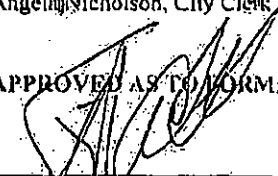
ADOPTED on this 22nd day of July 2019.


Virginia R. Young, Mayor

ATTEST:


Angela Nicholson, City Clerk

APPROVED AS TO FORM:


Stephen Cobb, City Attorney

STATE OF ARKANSAS }
COUNTY OF PULASKI } ss.
CITY OF SHERWOOD }

I, Angela Nicholson, City Clerk-Treasurer for the City of Sherwood, Arkansas, do hereby certify that the foregoing instrument is a true and correct copy of the original Ordinance No. 2361, filed in this office on the 22nd day of July 2019 IN TESTIMONY WHEREOF, I have hereunto set my hand and affixed the seal of the City of Sherwood, Arkansas, this 22nd day of July 2019.

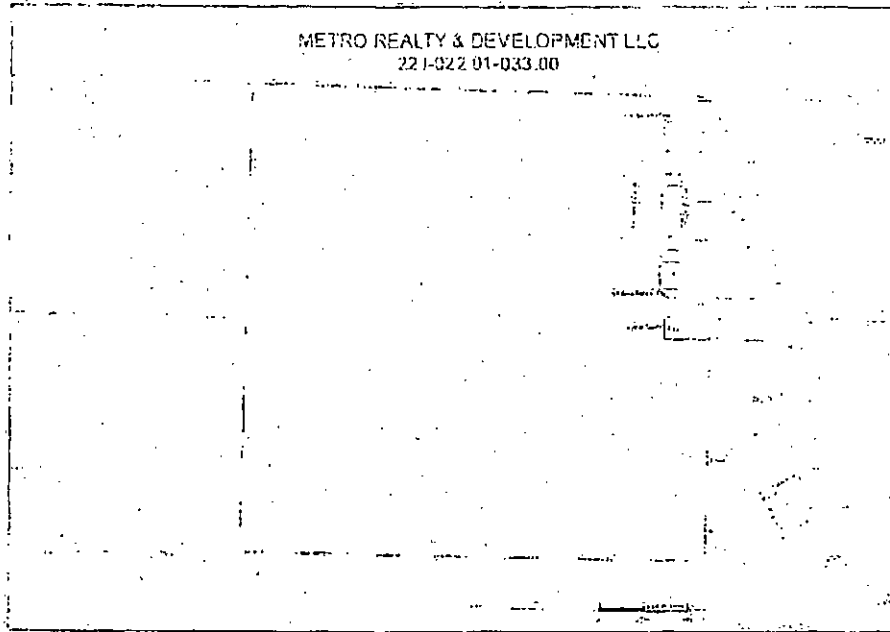
Angela Nicholson, City Clerk-Treasurer
By: 

FILED

OCT 11 2019

**TERRI HOLLINGSWORTH
CIRCUIT COUNTY CLERK**

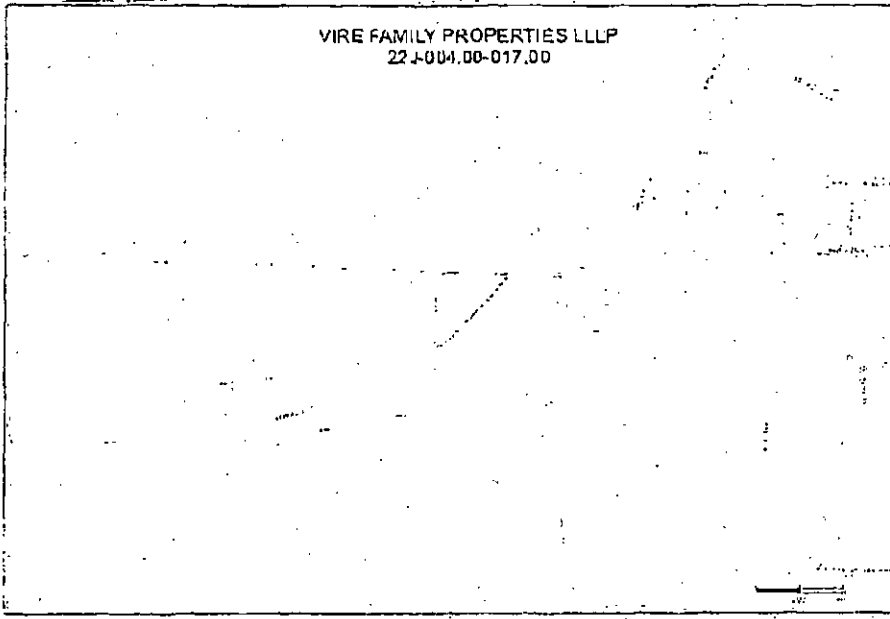
A



1

ALL INFORMATION CONTAINED HEREIN IS UNCLASSIFIED EXCEPT WHERE SHOWN OTHERWISE

2



FILED

HK
OCT 11 2019

**TERRI HOLLINGSWORTH
CIRCUIT COUNTY CLERK**

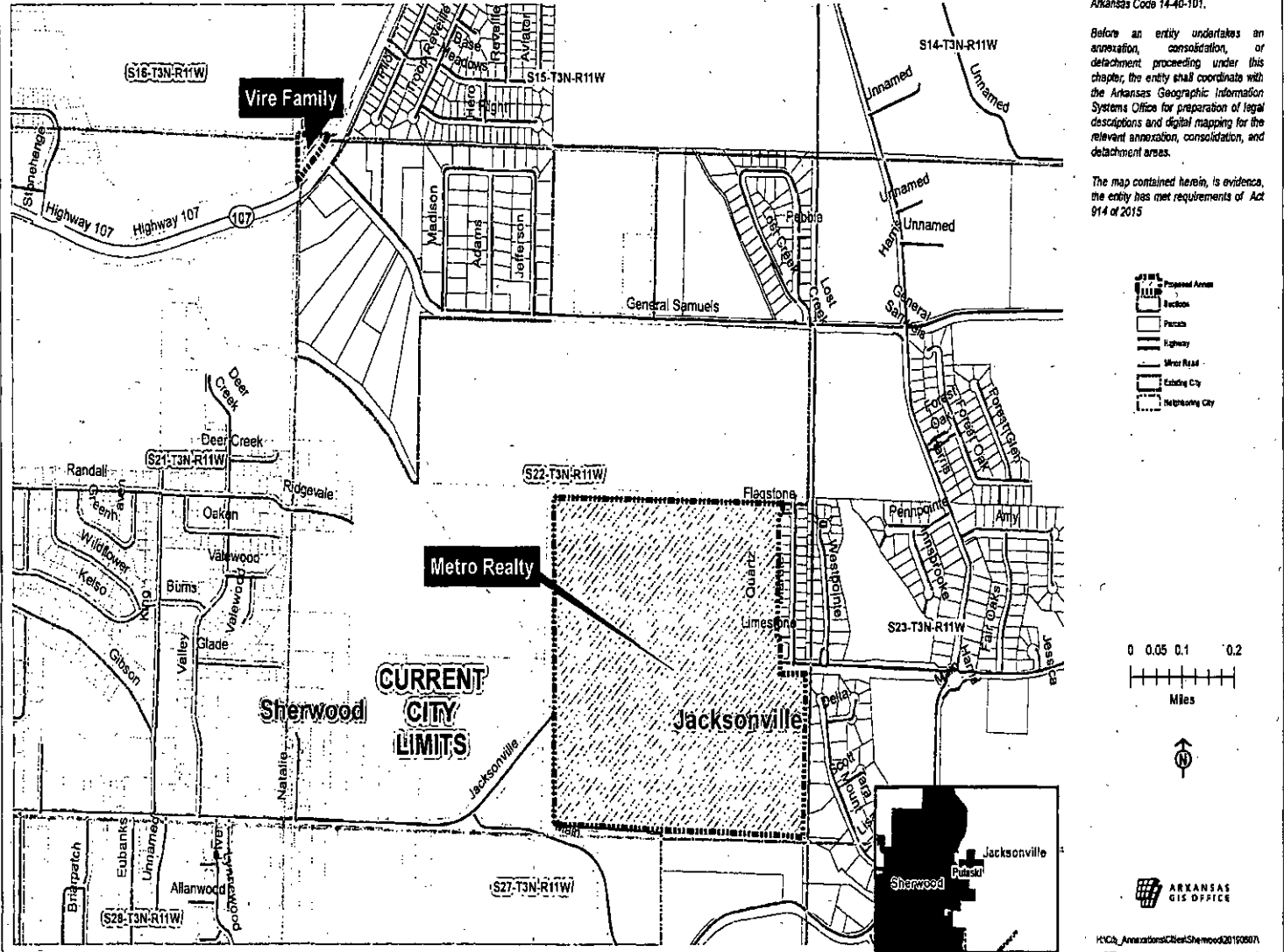
Proposed Annex: Detachment from Jacksonville w/annex into Sherwood
June 2019

City: Sherwood
Mayor: Virginia Young

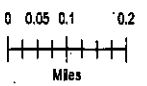
Arkansas Code 14-40-101.

Before an entity undertakes an annexation, consolidation, or detachment proceeding under this chapter, the entity shall coordinate with the Arkansas Geographic Information Systems Office for preparation of legal descriptions and digital mapping for the relevant annexation, consolidation, and detachment areas.

The map contained herein, is evidence, the entity has met requirements of Act 914 of 2015



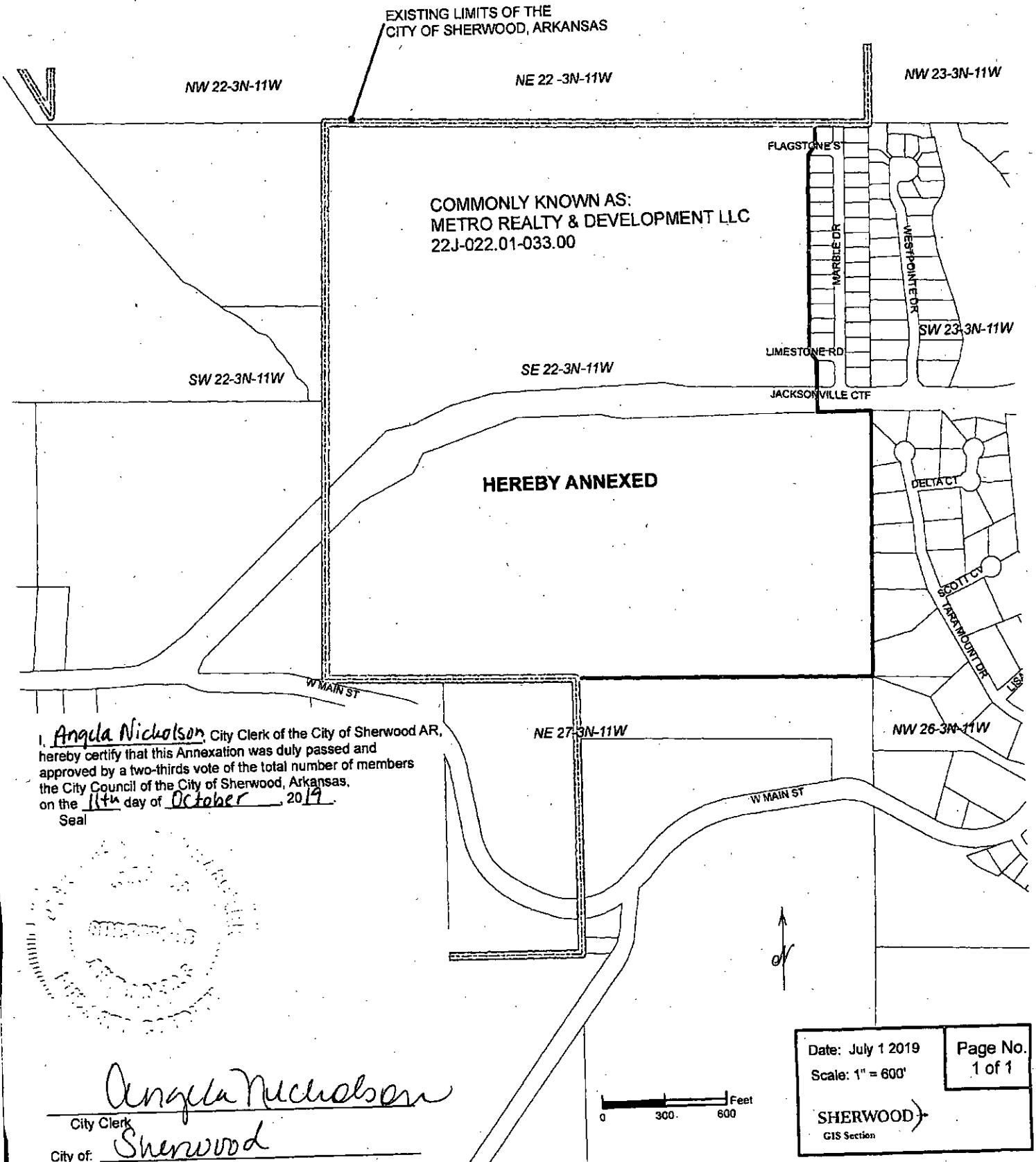
- Proposed Annex
- Section
- Parish
- Highway
- Minor Road
- Existing City
- Neighboring City



PLAT OF ANNEXATION **FILED** TO THE CITY OF SHERWOOD, ARKANSAS

2019
TERRI HOLLINGSWORTH
CROCKET COUNTY CLERK

ALL UNPLATTED PART OF SE 22-3N-11W INCLUDING ALL ADJOINING PUBLIC



I, Angela Nicholson, City Clerk of the City of Sherwood AR, hereby certify that this Annexation was duly passed and approved by a two-thirds vote of the total number of members the City Council of the City of Sherwood, Arkansas, on the 11th day of October, 2019.
Seal



Angela Nicholson
City Clerk
City of: Sherwood

Date: July 1 2019	Page No. 1 of 1
Scale: 1" = 600'	

PLAT OF ANNEXATION TO THE CITY OF SHERWOOD, ARKANSAS

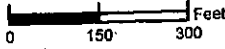
PT NW NW LYING N & W OF HW 107 EXC 0.47 AC FOR R/W HWY 107 22-3N-11W

FILED

OCT 11 2019

TERRI HOLLINGSWORTH
CIRCUIT COUNTY CLERK

EXISTING LIMITS OF THE
CITY OF SHERWOOD, ARKANSAS



SE/4 SE/4
16-3N-11W

SW/4 SW/4
15-3N-11W

COMMONLY KNOWN AS:
VIRE FAMILY PROPERTIES LLLP
22J-004.00-017.00

HEREBY ANNEXED

NW/4 NW/4
22-3N-11W

NE/4 NE/4
21-3N-11W

HIGHWAY 107

GENERAL SAMUELS RD

PILOT CT

I, Angela Nicholson City Clerk of the City of Sherwood AR,
hereby certify that this Annexation was duly passed and
approved by a two-thirds vote of the total number of members
the City Council of the City of Sherwood, Arkansas,
on the 11th day of October, 20 19.
Seal



Angela Nicholson

City Clerk

City of: Sherwood

Date: July 1 2019
Scale: 1" = 300'

Page No.
1 of 1

SHERWOOD
GIS Section

FILED

DEC 6 2019

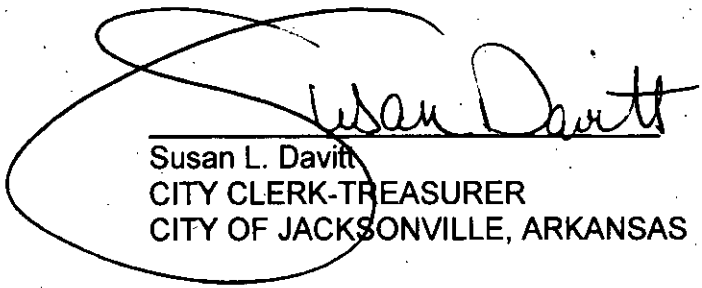
**TERRI HOLLINGSWORTH
CIRCUIT COUNTY CLERK**

STATE OF ARKANSAS)
) SS
COUNTY OF PULASKI)

CERTIFICATE

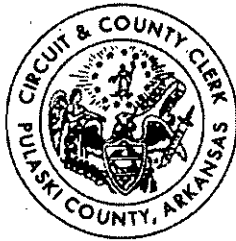
I the undersigned, City Clerk-Treasurer of the City of Jacksonville, Arkansas, hereby certify that the foregoing ORDINANCE numbered 1608 (#15-2019) is a true and correct copy of said ORDINANCE, duly passed by the City Council and approved by the Mayor of the City of Jacksonville, Arkansas, on August 15, 2019 and that the same now appears of record in ORDINANCE BOOK number XXII in the office of the City Clerk of Jacksonville, Arkansas.

IN TESTIMONY WHEREOF, I have hereunto set my hand and affixed the seal of the City of Jacksonville, Arkansas, this 15th day of November, 2019.


Susan L. Davitt
CITY CLERK-TREASURER
CITY OF JACKSONVILLE, ARKANSAS



TERRI HOLLINGSWORTH
PULASKI CIRCUIT/COUNTY CLERK



401 WEST MARKHAM STREET, SUITE 100
LITTLE ROCK, ARKANSAS 72201

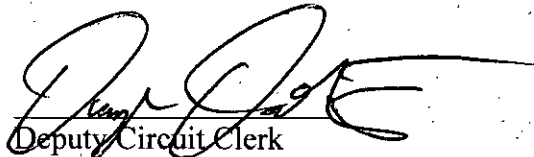
December 6, 2019

John Thurston
Arkansas Secretary of State
500 Woodlane Ave
Little Rock AR 72201

Re: Jacksonville / Sherwood Detachment and Annexation

Dear Secretary Thurston,

Enclosed are the certified copies of the ordinances for the Detachment and Annexation between the Cities of Jacksonville and Sherwood.


Deputy Circuit Clerk

7-1-14-1001002054

ORDINANCE NO. 1615 (#22-2019)

AN ORDINANCE APPROVING THE DETACHMENT OF LANDS FROM THE CITY OF JACKSONVILLE TO BE ANNEXED INTO THE CITY OF SHERWOOD; AND FOR OTHER PURPOSES.

WHEREAS, The City of Sherwood, Arkansas, pursuant to Ark. Code Sec. 14-40-2101, adopted Sherwood City Ordinance 2261 on July 22nd, 2019. The Ordinance called for the detachment of two (2) properties from the City of Jacksonville to be annexed into the City of Sherwood, and

WHEREAS, the required public hearing was conducted by the City of Jacksonville on September 19th, 2019 at 6:11 p.m. regarding the proposed detachment.

NOW, THEREFORE, BE IT ORDAINED BY THE CITY COUNCIL OF JACKSONVILLE, ARKANSAS;

SECTION ONE: Sherwood City Ordinance 2261, attached hereto as Exhibit 1 and incorporated herein by reference provides the descriptions of the two (2) parcels of property the City of Sherwood requests be detached from the City of Jacksonville to be annexed into the City of Sherwood.

SECTION TWO: The City of Jacksonville hereby approves the detachment of the two (2) parcels from the City of Jacksonville to be annexed into the City of Sherwood.

ADOPTED on this 3^d day of October 2019.


BOB JOHNSON, MAYOR

ATTEST:


SUSAN DAVITT, CITY CLERK

APPROVED AS TO FORM:


STEPHANIE FRIEDMAN, CITY ATTORNEY



ORDINANCE NO. 2261

AN ORDINANCE BY THE CITY OF SHERWOOD
ARKANSAS CALLING FOR THE SIMULTANEOUS
DETACHMENT AND ANNEXATION OF LAND
CURRENTLY LOCATED IN JACKSONVILLE,
PULASKI COUNTY ARKANSAS, PURSUANT TO
ARK. CODE ANN. §14-40-2101.

WHEREAS, Ark. Code Ann. §14-40-2101 provides a procedure by which property may be simultaneously detached from one municipality and annexed into an adjoining municipality; and

WHEREAS, the City of Sherwood, Arkansas, desires to detach and annex the following described properties ("the Properties") currently located in the City of Jacksonville, Pulaski County, Arkansas:

Property 1. All unplatted part of SE22-3N-11W including all adjoining public rights of way.

Property 2. PT NW NW Lying N&W of HWY 107 EXC 0.47 AC FOR R/W Hwy 107 22-3N-11W

WHEREAS, a map showing the location of the Properties is attached hereto as Exhibit "A"; and

WHEREAS, the City of Sherwood and Jacksonville have reached an agreement relative to the detachment and annexation of the Properties, and the City of Sherwood stands ready to provide all municipal services to the Properties; and

WHEREAS, the City of Sherwood, Arkansas, wishes to comply with the provisions of Ark. Code Ann. §14-40-2101;

**NOW, THEREFORE, BE IT ORDAINED BY THE CITY COUNCIL FOR
THE CITY OF SHERWOOD, ARKANSAS:**

Section 1: That the Properties described herein and in the attached Exhibit "A" be simultaneously de-annexed from the City of Jacksonville, Arkansas, and annexed into the City of Sherwood, Arkansas, pursuant to Ark. Code Ann. §14-40-2101;

Section 2: That the City Clerk is hereby directed to send a copy of this ordinance to the governing body of the City of Jacksonville, Arkansas, pursuant to Ark. Code Ann. §14-40-2101(a);

Section 3: Pursuant to Ark. Code Ann. §14-40-2101(b)(2), the City of Jacksonville, Arkansas, shall conduct a public hearing within sixty (60) days of the date of passage of this ordinance;

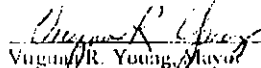
Section 4: Pursuant to Ark. Code Ann. §14-40-2101(b)(3), the City Clerk of the City of Sherwood, Arkansas, is directed to publish a legal notice of the public hearing at least fifteen (15) days prior to the public hearing, and such notice shall set out the legal description of the properties proposed to be detached and annexed;

Section 5: If the City Council for the City of Jacksonville, Arkansas, approves the proposed detachment and annexation ordinance, the City of Sherwood shall proceed to render services to the newly annexed area, pursuant to Ark. Code Ann. §14-40-2101(c)(2);

Section 6: If the City Council for the City of Jacksonville Arkansas, approves the proposed detachment and annexation ordinance, and if no suit is brought within thirty (30) days to review the mutual actions of the City of Sherwood and the City of Jacksonville, then the detachment and annexation of the land shall be final, pursuant to Ark. Code Ann.

§14-40-2101(d), and the City Clerk of the City of Sherwood, Arkansas, shall at that time certify a copy of the plat of the annexed properties and a copy of the ordinances passed to the County Clerk of Pulaski County, Arkansas, pursuant to Ark Code Ann §14-40-2101(e)(2), who shall forward a copy of each document to the Secretary of State for the State of Arkansas, who shall file and preserve them.

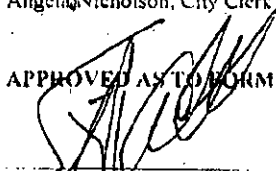
ADOPTED on this 22nd day of July 2019.


Virginia R. Young, Mayor

ATTEST:



Angela Nicholson, City Clerk

APPROVED AS TO FORM


Stephen Cobb, City Attorney

STATE OF ARKANSAS }
COUNTY OF PULASKI } ss.
CITY OF SHERWOOD }

I, Angela Nicholson, City Clerk-Treasurer for the City of Sherwood, Arkansas, do hereby certify that the foregoing instrument is a true and correct copy of the original ordinance No. 2061 filed in this office on the 22nd day of July, 2019. IN TESTIMONY WHEREOF, I have hereunto set my hand and affixed the seal of the City of Sherwood, Arkansas, this 22nd day of July, 2019.

Angela Nicholson, City Clerk-Treasurer
By: 

A

VETRO REALTY & DEVELOPMENT LLC
22-004.00-0163.00

1

ALLEGED TO BE A COPY OF THE ORIGINAL RECORD OF DEEDS

VIRE FAMILY PROPERTIES LLLP
22-J-004.00-017.00

2

Jacksonville to Sherwood – Legal Descriptions

Heslep

PART NW NE SECTION 22-3N-11 MPDA BEG NW COR NW NE
TH S88°15'53"E ALONG THE LRAFB BOUNDARY 989.06', S00°52'42"W660.61',
N88°23'31"W282.35',
S00°52'42"W617.24' TO THE NORTH R/W GENERAL SAMUELS ROAD, TH N88°23'48"W
ALONG ROAD R/W 481.74'
N00°31'18"E159.96', N88°19'24"W100', S01°28'29"W160' TO THE NORTH R/W GENERAL
SAMUELS ROAD
N88°25'00"W ALONG ROAD R/W 128.09' TH N01°00'48"E1280' TO THE POB

Jacksonville Christian Fellowship

PT NW NE SECTION 22-31-11 MPDA COM NW COR NW NE SECTION 22 MARKING
THE LRAFB BOUNDARY
TH S88°15'54"E989.06' AL SAID BOUNDARY S0°52'42"W660.61' FOR POB TH CONT
S0°52'42"W617.24'
TO N R/W GENERAL SAMUELS RD TH N88°23'31"W282.35', N0°52'42"E617.24'
S88°23'31"E282.35' TO POB

Lilac LLC

SE NW INCLUDING ALL ADJOINING PUBLIC RIGHTS OF WAY
S1/2 NE INCLUDING ALL ADJOINING PUBLIC RIGHTS OF WAY 22-3N-11W

Zhang Jun Qi

PT NW NE BEG 128.71' E OF SW COR NW NE E100°N200'W100'S200' TO BEG 22 3N 11W

Westco Inc

ALL UNPLATTED PART OF SW NW 27 3N 11W INCLUDING
ALL ADJOINING PUBLIC RIGHTS OF WAY

FILED

DEC 6 2019

**TERRI HOLLINGSWORTH
CIRCUIT COUNTY CLERK**



**ARKANSAS
GIS OFFICE**

July 1, 2019

Mr. Dennis R. Webb
Engineer Assistant - City of Sherwood
2199 E. Kiehl Ave.
Sherwood, AR 72120

RE: City of Sherwood Annexation Coordination Requirement

Mr. Webb,

Thank you for coordinating with our office as you seek to detach property from the City of Jacksonville and annex into the City of Sherwood, located in Section 22, Township 3 North, Range 11 West. This letter represents confirmation that you have properly coordinated with our office (Arkansas GIS Office) as specified in § 14-40-101 (Act 914 of 2015) of the 90th General Assembly.

Our office will wait completion of any additional steps necessary for the proposed boundary change, which normally comes from the Arkansas Secretary of State Elections Division after any appropriate filing by your County Clerk.

Thank you,

A handwritten signature in black ink, appearing to be the initials 'JW'.

Jennifer Wheeler, GIS Analyst

Attachments:
GIS Office Map of Proposed Annexation
Legal Description
Secretary of State Municipal Change Checklist

H:\City_Annexations\Cities\Sherwood\20190607\Doc\20190607_Sherwood_Annexation_Coordination_Letter.docx

ARKANSAS GIS OFFICE · 1 CAPITOL MALL SUITE 6D · LITTLE ROCK · ARKANSAS · 72201

PHONE (501) 682-2767 · www.gis.arkansas.gov · FAX (501) 682-6077

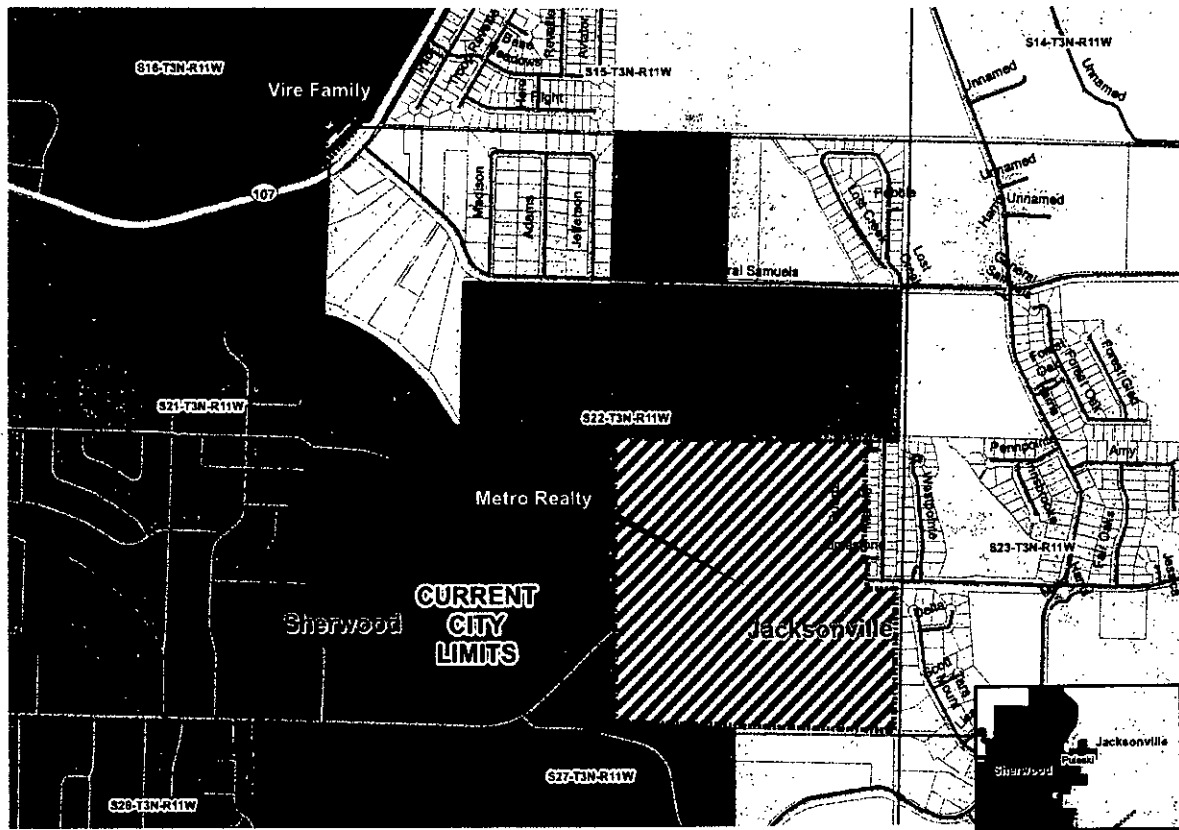
Proposed Annex: Detachment from Jacksonville w/annex into Sherwood
June 2019

City: Sherwood
Mayor: Virginia Young

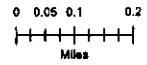
Arkansas Code 14-60-101.

Before an entity undertakes an annexation, consolidation, or detachment proceeding under this chapter, the entity shall coordinate with the Arkansas Geographic Information Systems Office for preparation of legal descriptions and digital mapping for the relevant annexation, consolidation, and detachment areas.

The map contained herein, is evidence, the entity has met requirements of Act 914 of 2015



- Proposed Annex
- Section
- Fence
- Highway
- Minor Road
- Existing City
- Neighboring City



ARKANSAS GIS OFFICE

14# 1201003054

Sherwood to Jacksonville Legal Descriptions

Metro Realty:

ALL UNPLATTED PART OF SE 22-3N-11W INCLUDING
ALL ADJOINING PUBLIC RIGHTS OF WAY

Vire Family Properties

PT NW NW LYING N & W OF HWY 107 EXC 0.47 AC FOR R/W HWY 107 22-3N-11W

FILED

DEC. 6 2019

**TERRI HOLLINGSWORTH
CIRCUIT COUNTY CLERK**



**ARKANSAS
GIS OFFICE**

July 1, 2019

Mr. Dennis R. Webb
Engineer Assistant – City of Sherwood
2199 E. Kiehl Ave.
Sherwood, AR 72120

RE: City of Jacksonville Annexation Coordination Requirement

Mr. Webb,

Thank you for coordinating with our office as you seek to detach property from the City of Sherwood and annex into the City of Jacksonville, located in Sections 22 & 27, Township 3 North, Range 11 West. This letter represents confirmation that you have properly coordinated with our office (Arkansas GIS Office) as specified in § 14-40-101 (Act 914 of 2015) of the 90th General Assembly.

Our office will wait completion of any additional steps necessary for the proposed boundary change, which normally comes from the Arkansas Secretary of State Elections Division after any appropriate filing by your County Clerk.

Thank you,

A handwritten signature in black ink, appearing to be 'JW', written in a cursive style.

Jennifer Wheeler, GIS Analyst
/jw

Attachments:
GIS Office Map of Proposed Annexation
Legal Description
Secretary of State Municipal Change Checklist

H:\City_Annexations\Cities\Jacksonville\20190607\Doc\20190607_Jacksonville_Annexation_Coordination_Letter.docx

ARKANSAS GIS OFFICE · 1 CAPITOL MALL SUITE 6D · LITTLE ROCK · ARKANSAS · 72201
PHONE (501) 682-2767 · www.gis.arkansas.gov · FAX (501) 682-6077

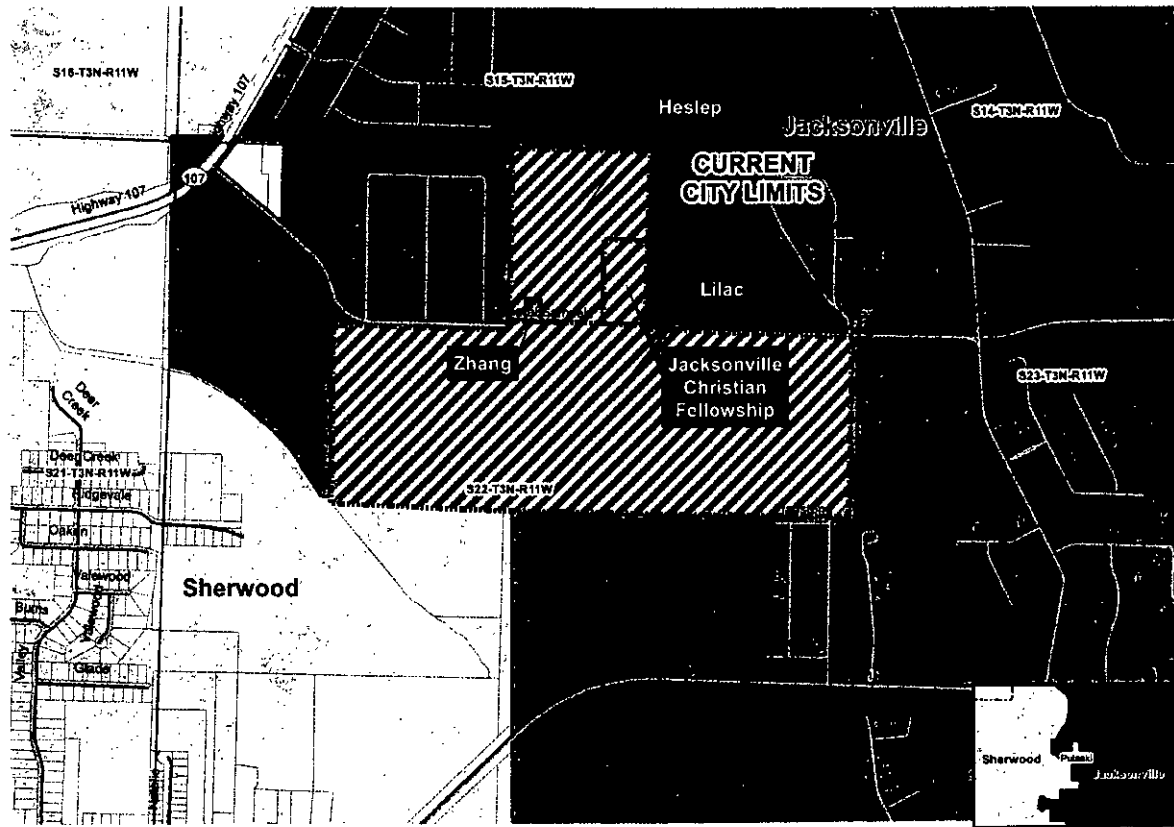
Proposed Annex: Detachment from Sherwood w/annex into Jacksonville
July 2018

City: Jacksonville
Mayor: Bob Johnson

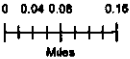
Arkansas Code 14-40-101.

Before an entity undertakes an annexation, consolidation, or detachment proceeding under this chapter, the entity shall coordinate with the Arkansas Geographic Information Systems Office for preparation of legal descriptions and digital mapping for the relevant annexation, consolidation, and detachment areas.

The map contained herein, is evidence, the entity has met requirements of Act 914 of 2015



- Proposed Annex
- Section
- Parcel
- Highway
- Water Pond
- Existing City
- Incorporating City



ARKANSAS GIS OFFICE

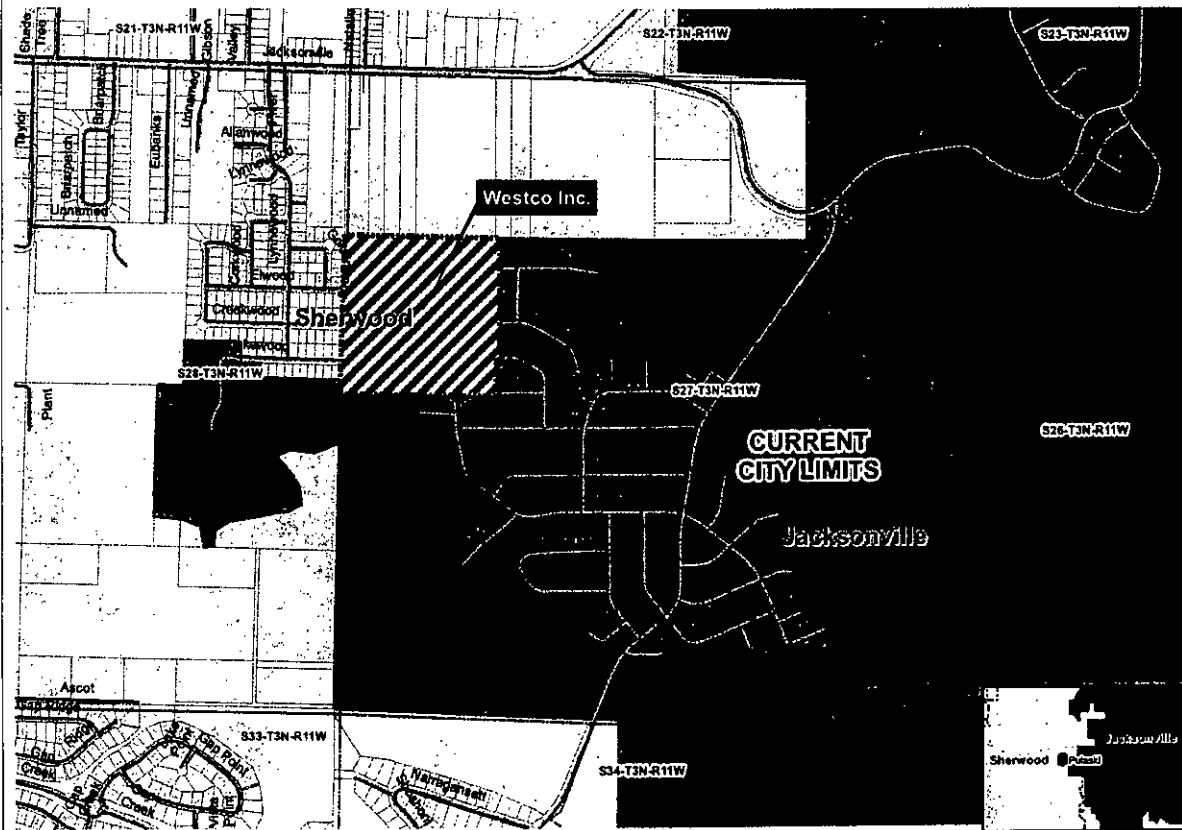
Proposed Annex: Detachment from Sherwood w/annex into Jacksonville
July 2019

City: Jacksonville
Mayor: Bob Johnson

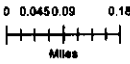
Arkansas Code 14-40-701.

Before an entity undertakes an annexation, consolidation, or detachment proceeding under this chapter, the entity shall coordinate with the Arkansas Geographic Information Systems Office for preparation of legal descriptions and digital mapping for the relevant annexation, consolidation, and detachment areas.

The map contained herein, is evidence, the entity has met requirements of Act 914 of 2015



- Proposed Annex
- Backlots
- Farms
- Highways
- Major Road
- Existing City
- Neighboring City



ARKANSAS GIS OFFICE