

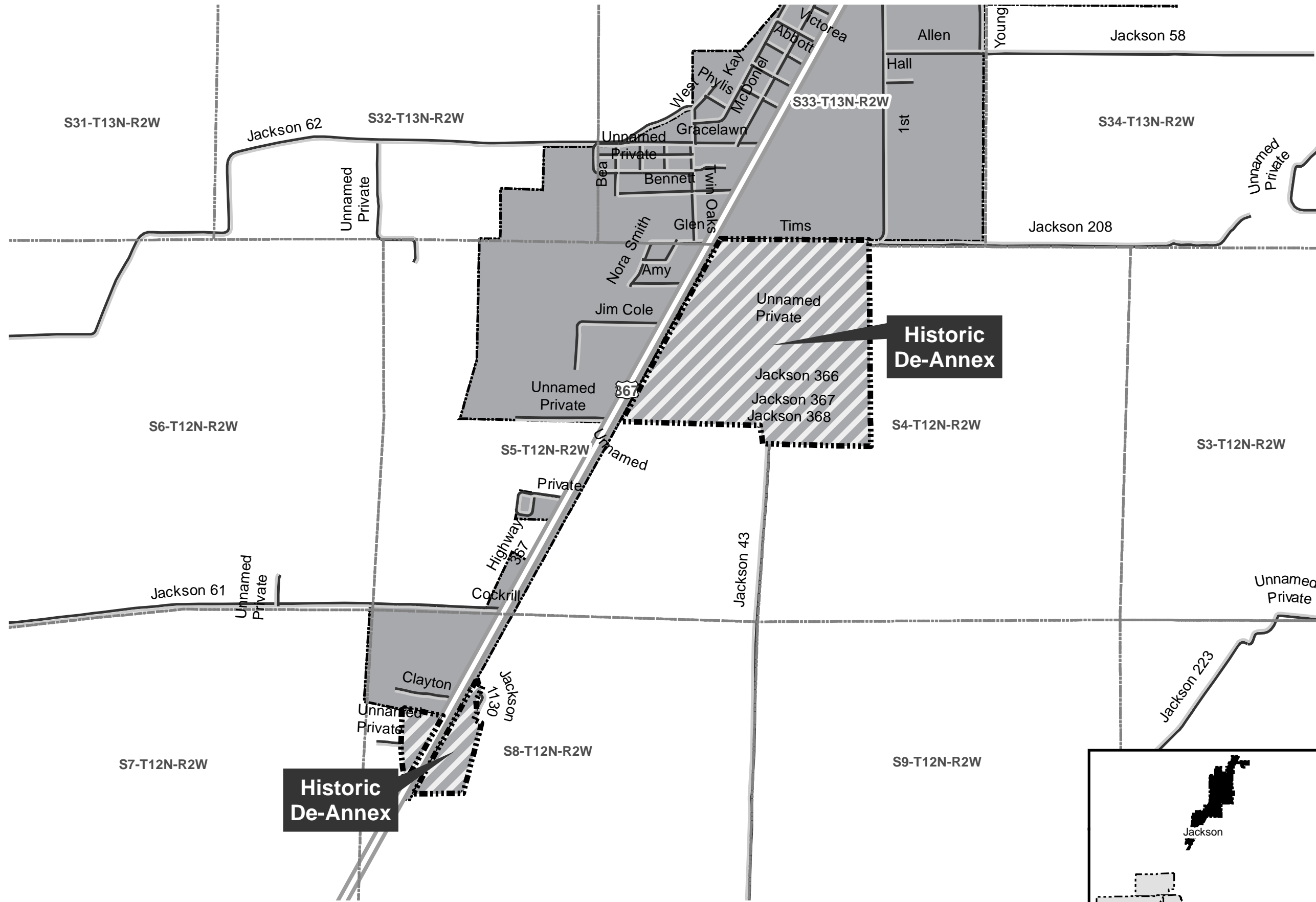
Historic De-Annex C-2006-12: City of Tuckerman
***for Census only - was already removed from state map**

City: Tuckerman
Mayor: Rick Womack

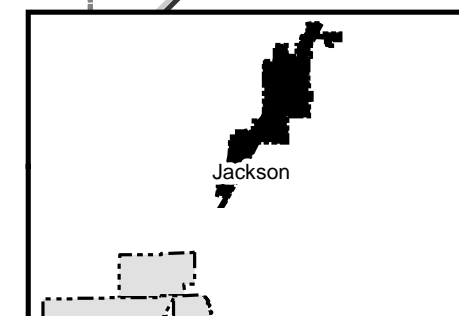
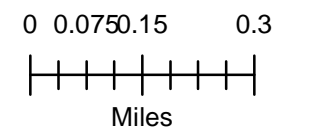
Arkansas Code 14-40-101.

Before an entity undertakes an annexation, consolidation, or detachment proceeding under this chapter, the entity shall coordinate with the Arkansas Geographic Information Systems Office for preparation of legal descriptions and digital mapping for the relevant annexation, consolidation, and detachment areas.

The map contained herein, is evidence, the entity has met requirements of Act 914 of 2015



- Historic De-Annex
- Sections
- Highway
- Minor Road
- Existing City
- Neighboring City



SPECIAL ELECTION – CITY OF TUCKERMAN, JACKSON COUNTY, ARKANSAS				
TUESDAY, JULY 11th, 2006				
	ADOPTION OF 1/4% LOCAL SALES AND USE TAX WITHIN THE CITY OF TUCKERMAN, ARKANSAS		DETACHING CERTAIN LANDS KNOWN AS HALL ADDITION AND ALLEN ADDITION FROM THE CORPORATE LIMITS OF TUCKERMAN, ARKANSAS	
	FOR	AGAINST	FOR	AGAINST
Early Vote	3	3	6	0
Tuckerman Fire Station	153	49	99	95
Total	156	52	105	95
We hereby certify that the above is a true and correct abstract of vots cast for the issues in the city of Tuckerman Special Election held Tuesday, July 11th, 2006.				
Signed this 14th day of July, 2006				
<i>Mary Hoke</i>				
<i>Wooden</i>				
<i>Wynne Beard</i>				

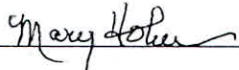
C-2006-12

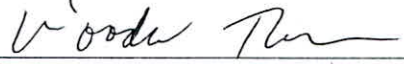
**CERTIFICATION OF SPECIAL ELECTION
TUESDAY, JULY 11th, 2006**

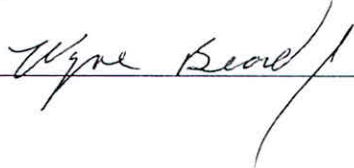
We, the undersigned Members of the Jackson County Board of Election Commissioners, do hereby certify that the returns of the votes of the special election held Tuesday, July 11th, 2006, on the issue of "ADOPTION OF A ONE-FOURTH PERCENT (1/4%) LOCAL SALES AND USE TAX WITHIN THE CITY OF TUCKERMAN, ARKANSAS. THE SAID TAX IS TO BE USED TO PURCHASE A NEW FIRE TRUCK, UPGRADE AND MAINTAIN THE FIRE FIGHTING EQUIPMENT FOR THE TUCKERMAN VOLUNTEER FIRE DEPARTMENT" and the issue of "THE QUESTION OF DETACHING CERTAIN LANDS WITHIN THE CORPORATE LIMITS OF TUCKERMAN. THE LANDS IN QUESTION ARE CURRENTLY KNOWN AS THE HALL ADDITION AND THE ALLEN ADDITION", have been delivered to us by the County Clerk. We declare the results of the election to be as follows:

FOR ADOPTION OF 1/4% LOCAL SALES AND USE TAX WITHIN THE CITY OF TUCKERMAN, ARKANSAS	156
AGAINST ADOPTION OF 1/4% LOCAL SALES AND USE TAX WITHIN THE CITY OF TUCKERMAN, ARKANSAS	52
FOR DETACHING CERTAIN LANDS KNOWN AS HALL ADDITION AND ALLEN ADDITION FROM THE CORPORATE LIMITS OF TUCKERMAN, ARKANSAS	105
AGAINST DETACHING CERTAIN LANDS KNOWN AS ALL ADDITION AND ALLEN ADDITION FROM THE CORPORATE LIMITS OF TUCKERMAN, ARKANSAS	95

Witness our hands this 14th day of July, 2006







A	B	C
<p>11 INSTRUCTIONS TO VOTER</p> <p>1. Vote by placing an appropriate mark (blacken the oval ●) below the measure either FOR or AGAINST. 2. Use a black or blue pen to mark the ballot.</p> <p>If you vote for more than one choice in a race, your vote in that race will not count. If you make a mistake on your ballot, return it to an election official for a replacement ballot. You may replace up to two ballots in an election.</p>	<p>DEANNEXATION OF HALL ADDITION AND ALLEN ADDITION FROM THE CORPORATE LIMITS OF TUCKERMAN, ARKANSAS.</p> <p>VOTE FOR OR AGAINST THE QUESTION OF DETACHING CERTAIN LANDS WITHIN THE CORPORATE LIMITS OF TUCKERMAN. THE LANDS IN QUESTION ARE CURRENTLY KNOWN AS THE HALL ADDITION AND THE ALLEN ADDITION.</p>	
<p>21 ONE-FOURTH PERCENT (1/4%) SALES AND USE TAX FOR THE TUCKERMAN VOLUNTEER FIRE DEPARTMENT</p> <p>VOTE FOR OR AGAINST ADOPTION OF A ONE-FOURTH PERCENT (1/4%) LOCAL SALES AND USE TAX WITHIN THE CITY OF TUCKERMAN, ARKANSAS. THE SAID TAX IS TO BE USED TO PURCHASE A NEW FIRE TRUCK, UPGRADE AND MAINTAIN THE FIRE FIGHTING EQUIPMENT FOR THE TUCKERMAN VOLUNTEER FIRE DEPARTMENT.</p>	<p><input type="radio"/> FOR DETACHING CERTAIN LANDS KNOWN AS HALL ADDITION AND ALLEN ADDITION FROM THE CORPORATE LIMITS OF TUCKERMAN, ARKANSAS.</p> <p><input type="radio"/> AGAINST DETACHING CERTAIN LANDS KNOWN AS HALL ADDITION AND ALLEN ADDITION FROM THE CORPORATE LIMITS OF TUCKERMAN, ARKANSAS.</p>	
<p>40</p> <p>41</p> <p>42 <input type="radio"/> FOR ADOPTION OF 1/4% LOCAL SALES AND USE TAX WITHIN THE CITY OF TUCKERMAN, ARKANSAS.</p> <p>43 <input type="radio"/> AGAINST ADOPTION OF 1/4% LOCAL SALES AND USE TAX WITHIN THE CITY OF TUCKERMAN, ARKANSAS.</p>		
<p>51</p>		

JULY 11, 2006 TUCKERMAN SPECIAL ELECTION RESULTS

PRECINCT	EARLY	ABSENTEE	TUCKERMAN FIRE DEPT IVOTRONIC	TUCKERMAN FIRE DEPT PAPER	TUCKERMAN FIRE DEPT TOTAL
HOW VOTE - IVOTRONIC OR PAPER BALLOT					
# OF VOTES CAST	6	0	162	40	208
TOTAL BALLOTS CAST	6	0	162	40	208
TOTAL SIGNATURES IN POLL BOOKS	6	0	162	40	208
BALANCE	0	0	0	0	0
ADOPTION OF 1/4% LOCAL SALES AND USE TAX WITHIN THE CITY OF TUCKERMAN, ARKANSAS					0
FOR	3	0	125	28	156
					0
AGAINST	3	0	37	12	52
					0
UNDER VOTES	0	0	0	0	0
OVER VOTES	0	0	0	0	0
TOTALS	6	0	162	40	208
DETACHING CERTAIN LANDS KNOWN AS HALL ADDITION AND ALLEN ADDITION FROM THE CORPORATE LIMITS OF TUCKERMAN, ARKANSAS					
FOR	6	0	77	22	105
					0
AGAINST	0	0	78	17	95
					0
UNDER VOTES	0	0	7	1	8
OVER VOTES	0	0	0	0	0
TOTALS	6	0	162	40	208
BALLOTS PRINTED	700				
BALLOTS USED FOR EARLY VOTING	6				
BALLOTS USED AT POLL	40				
BALLOTS SPOILED AT POLL	1				
BALLOTS LEFT	653				

C-2006-12

FLETCHER Land Surveying, Inc.

212 THIRD STREET ♦ P.O. BOX 1298
NEWPORT, ARKANSAS 72112 ♦ PHONE/FAX (870)-523-5625

JANUARY 30, 2005

LEGALS OF DE-ANNEXATION

JOB# 15074

CITY OF TUCKERMAN
P.O. BOX 1117
TUCKERMAN, AR 72473

GENTLEMEN:

ATTACHED HEREON YOU WILL FIND THE LEGAL DESCRIPTION YOU REQUESTED ON THE PROPERTIES YOU WISHED TO DE-ANNEX. IF WE CAN BE OF FURTHER ASSISTANCE, FEEL FREE TO CALL.

SINCERELY,


KENNY L. FLETCHER
RLS# 1012

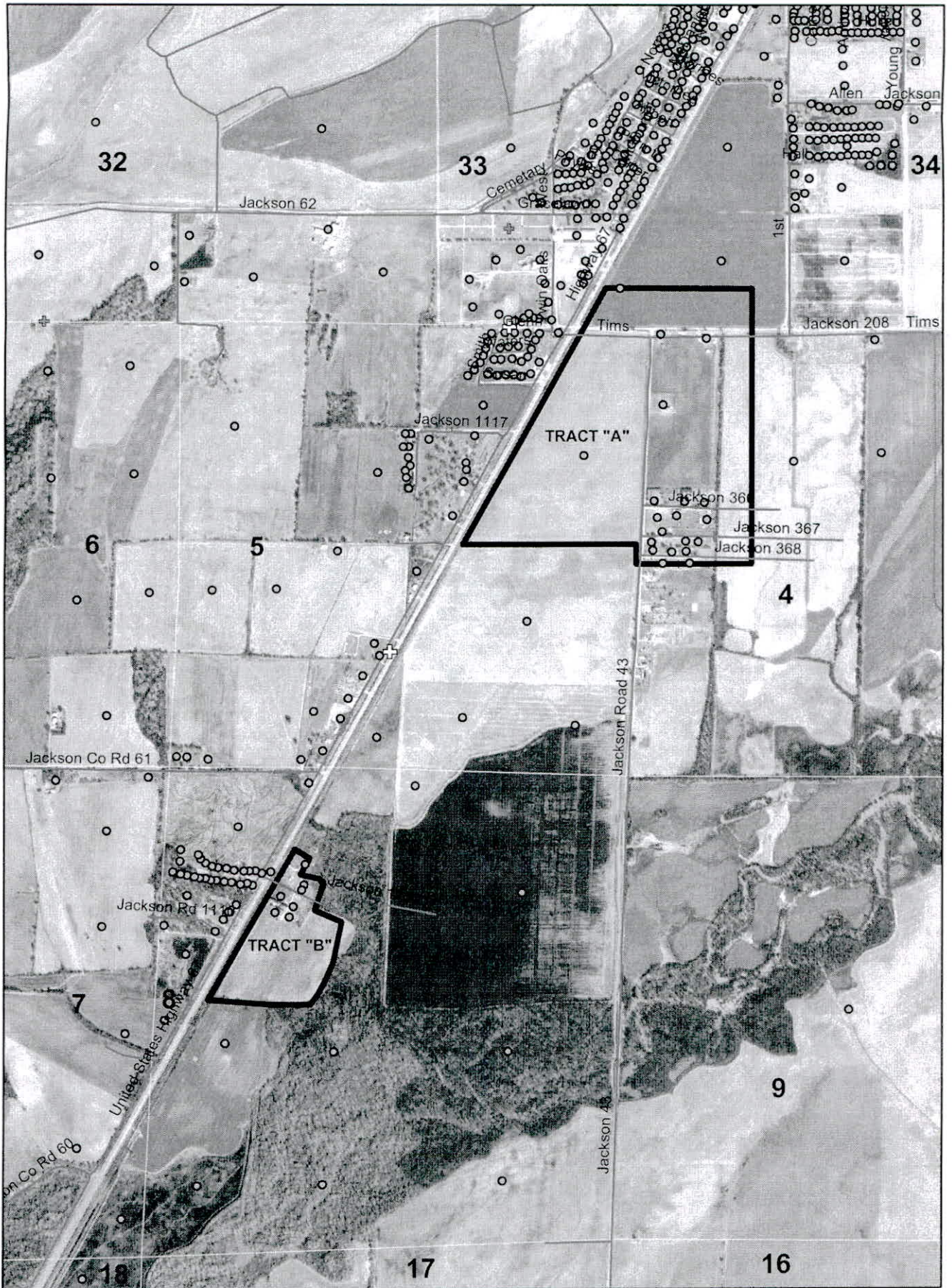
TRACT 'A' LEGAL DESCRIPTION: PART OF SECTIONS 4 AND 5, TOWNSHIP 12 NORTH, RANGE 2 WEST, JACKSON COUNTY, ARKANSAS, BEING MORE PARTICULARLY DESCRIBED AS FOLLOWS: **BEGINNING** AT THE INTERSECTION OF THE EASTERLY RIGHT-OF-WAY LINE OF UNION-PACIFIC RAILROAD WITH THE EAST-WEST MID-SECTION LINE OF SAID SECTION 5; THEN RUN EAST, ALONG SAID EAST-WEST MID-SECTION LINE, A DISTANCE OF 2000 FEET, MORE OR LESS, TO A POINT ON THE WEST LINE OF JACKSON COUNTY ROAD NO.43; THEN RUN SOUTH, ALONG THE WEST LINE OF SAID COUNTY ROAD NO.43, A DISTANCE OF 230.2 FEET; THEN RUN EAST, 1320 FEET TO A POINT ON THE EAST LINE OF THE W1/2W1/2 OF SAID SECTION 4; THEN RUN NORTH, ALONG THE EAST LINE OF SAID W1/2W1/2 SECTION 4, A DISTANCE OF 3167 FEET, MORE OR LESS, TO A POINT ON THE NORTH LINE OF COUNTY ROAD NO.208; THEN RUN WEST, ALONG THE NORTH LINE OF COUNTY ROAD NO.208, A DISTANCE OF 1900 FEET, MORE OR LESS, TO A POINT ON THE EASTERLY RIGHT-OF-WAY LINE OF SAID UNION-PACIFIC RAILROAD; THEN RUN S32°W, ALONG THE EASTERLY RIGHT-OF-WAY LINE OF SAID UNION-PACIFIC RAILROAD BACK TO THE POINT OF BEGINNING, BEING SUBJECT TO ALL EXISTING RIGHT-OF-WAYS AND EASEMENTS.

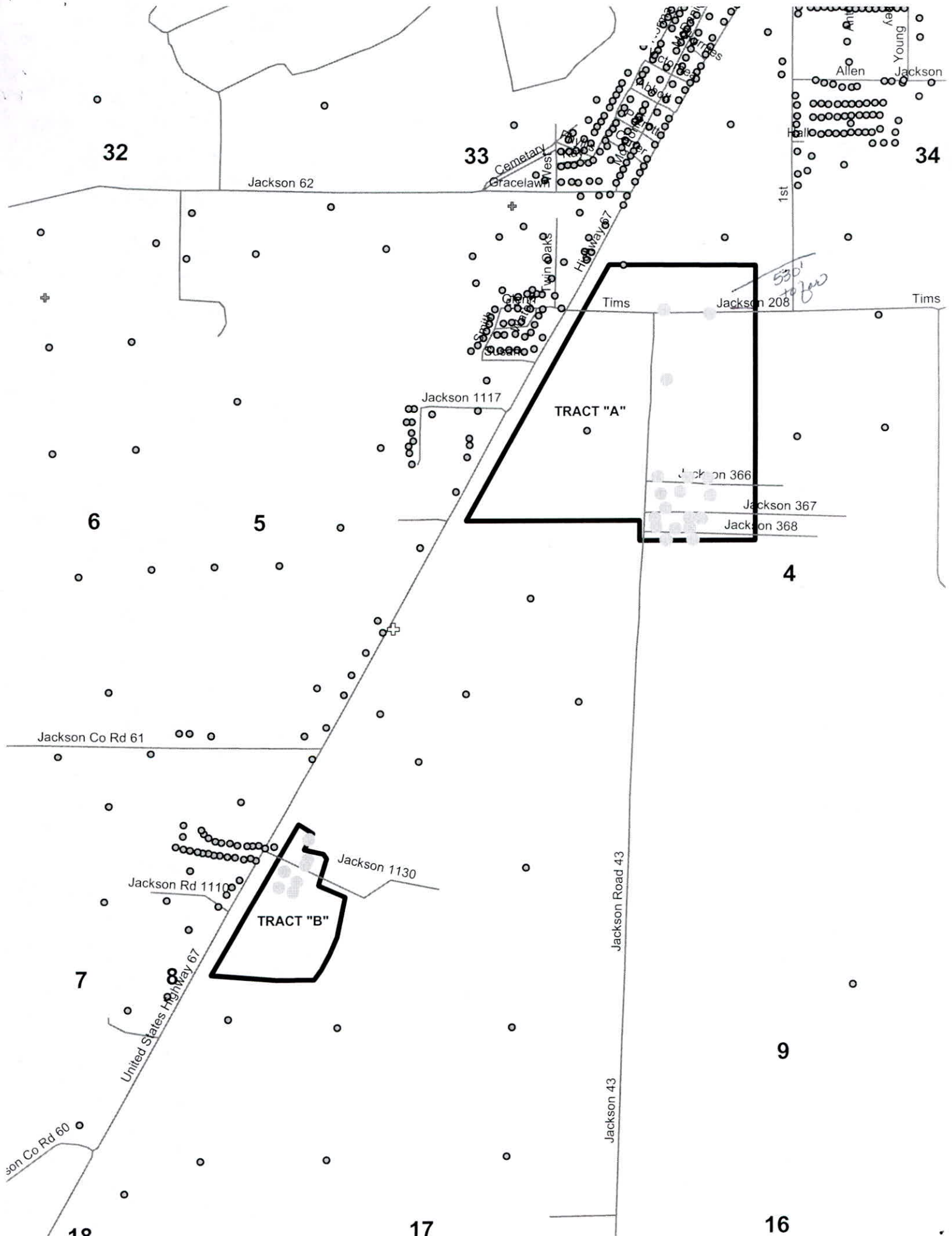
TRACT 'B' LEGAL DESCRIPTION: PART OF THE NORTHWEST QUARTER OF SECTION 8, TOWNSHIP 12 NORTH, RANGE 2 WEST, JACKSON COUNTY, ARKANSAS, BEING MORE PARTICULARLY DESCRIBED AS FOLLOWS: **BEGINNING** AT THE INTERSECTION OF THE EASTERLY RIGHT-OF-WAY LINE OF UNION-PACIFIC RAILROAD WITH THE EAST-WEST MID-SECTION LINE OF SAID SECTION 8, SAID POINT BEING ALSO THE SOUTHWEST CORNER OF THE UNRECORDED PLAT OF HOUT SUBDIVISION; THEN RUN ALONG THE SOUTHERLY AND EASTERLY LINES OF HOUT SUBDIVISION AS FOLLOWS: S85°48'E, 750 FEET; S89°52'40"E, 433.3 FEET; N36°09'45"E, 140.7 FEET; N28°22'00"E, 205 FEET; N22°50'40"E, 217 FEET; N11°38'50"E, 467.7 FEET; N66°36'30"W, 337.4 FEET; N17°29'40"E, 325.6 FEET; N36°28'50"W, 66.1 FEET; N77°40'10"W, 227.6 FEET; THEN LEAVING SAID HOUT SUBDIVISION, RUN N29°14'09"E, 215 FEET TO THE NORTHEAST CORNER OF THE BURTON TRACT; THEN RUN N56°54'W, 200 FEET TO THE NORTHWEST CORNER OF SAID BURTON TRACT, SAID POINT BEING ON THE EASTERLY RAILROAD R/W LINE OF SAID UNION-PACIFIC RAILROAD; THEN RUN S32°W, ALONG SAID EASTERLY RAILROAD R/W LINE BACK TO THE POINT OF BEGINNING, BEING SUBJECT TO ALL EXISTING RIGHT-OF-WAYS AND EASEMENTS.



KENNY L. FLETCHER, PROFESSIONAL LAND SURVEYOR No. 1012







32

33

34

Jackson 62

Cemetery
Gracelaw
West
Hwy 67
Highway 67

1st

Tims

Jackson 208

Tims

53' to go

TRACT "A"

Jackson 1117

Jackson 366

Jackson 367

Jackson 368

4

6

5

Jackson Co Rd 61

Jackson 1130

Jackson Rd 1110

TRACT "B"

Jackson Road 43

Jackson 43

United States Highway 67

Jackson Co Rd 60

9

7

18

17

16

