

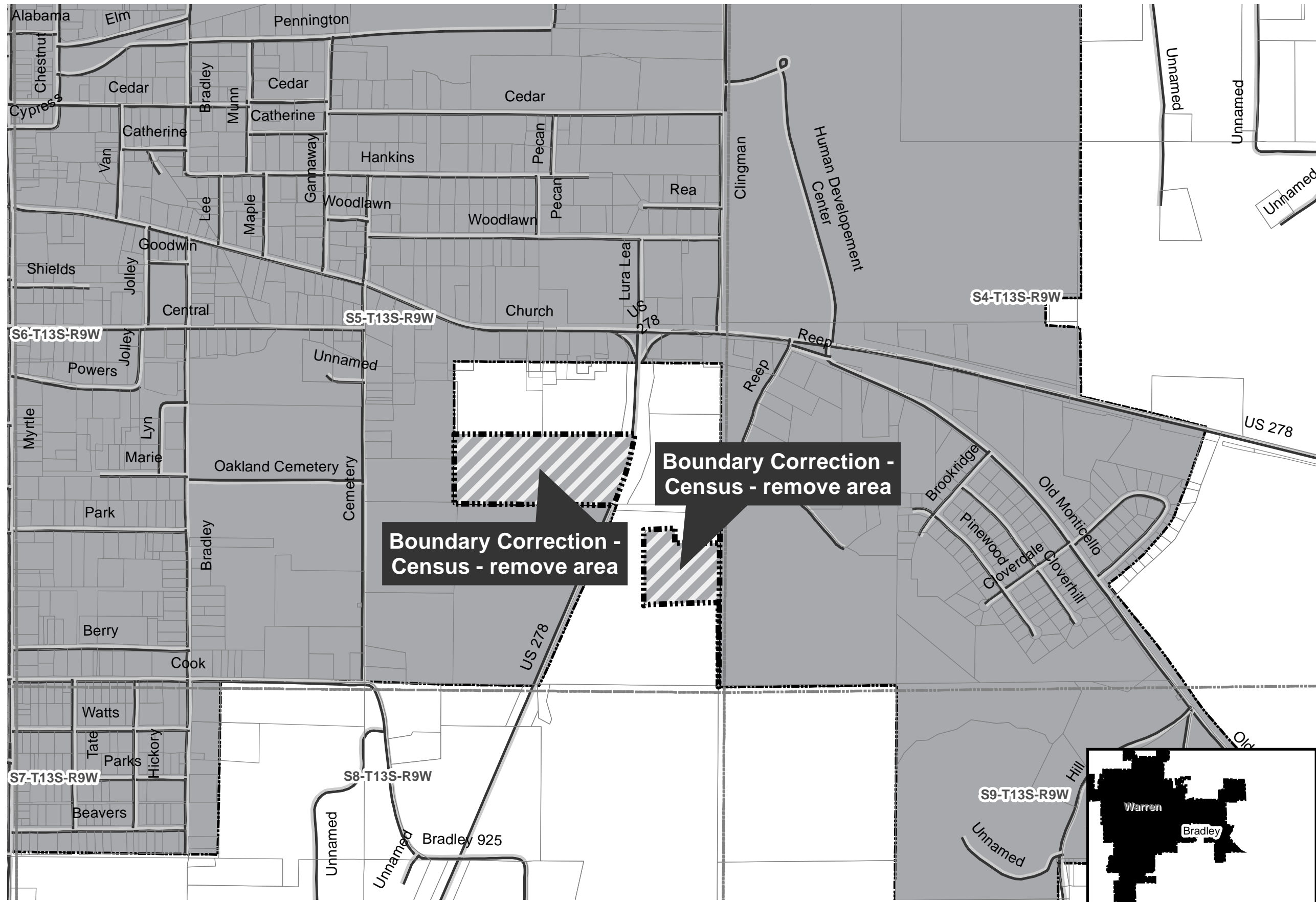
**Boundary Correction - BVP: City of Warren  
\*for Census only**

City: Warren  
Mayor: Denisa Pennington

Arkansas Code 14-40-101.

Before an entity undertakes an annexation, consolidation, or detachment proceeding under this chapter, the entity shall coordinate with the Arkansas Geographic Information Systems Office for preparation of legal descriptions and digital mapping for the relevant annexation, consolidation, and detachment areas.

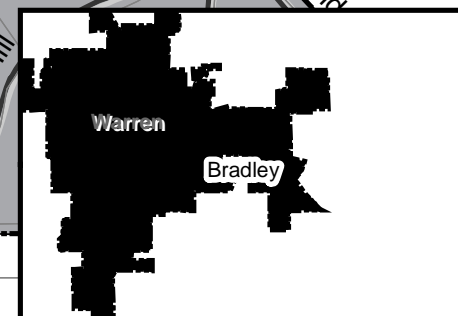
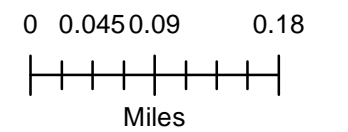
The map contained herein, is evidence, the entity has met requirements of Act 914 of 2015



- Boundary Correction - Census
- Sections
- Parcels
- Minor Road
- Existing City
- Neighboring City
- County Boundary

**Boundary Correction -  
Census - remove area**

**Boundary Correction -  
Census - remove area**



## Jennifer Wheeler

---

**From:** Charlotte Brown <charlotte.brown@cityofwarren.us>  
**Sent:** Thursday, January 23, 2020 4:05 PM  
**To:** Jennifer Wheeler  
**Cc:** Denisa Pennington; Mike May  
**Subject:** Warren Boundary

Hello Jennifer:

The information we received regarding the Warren Boundary Map is the state map is more correct. The two areas in question are wooded areas.

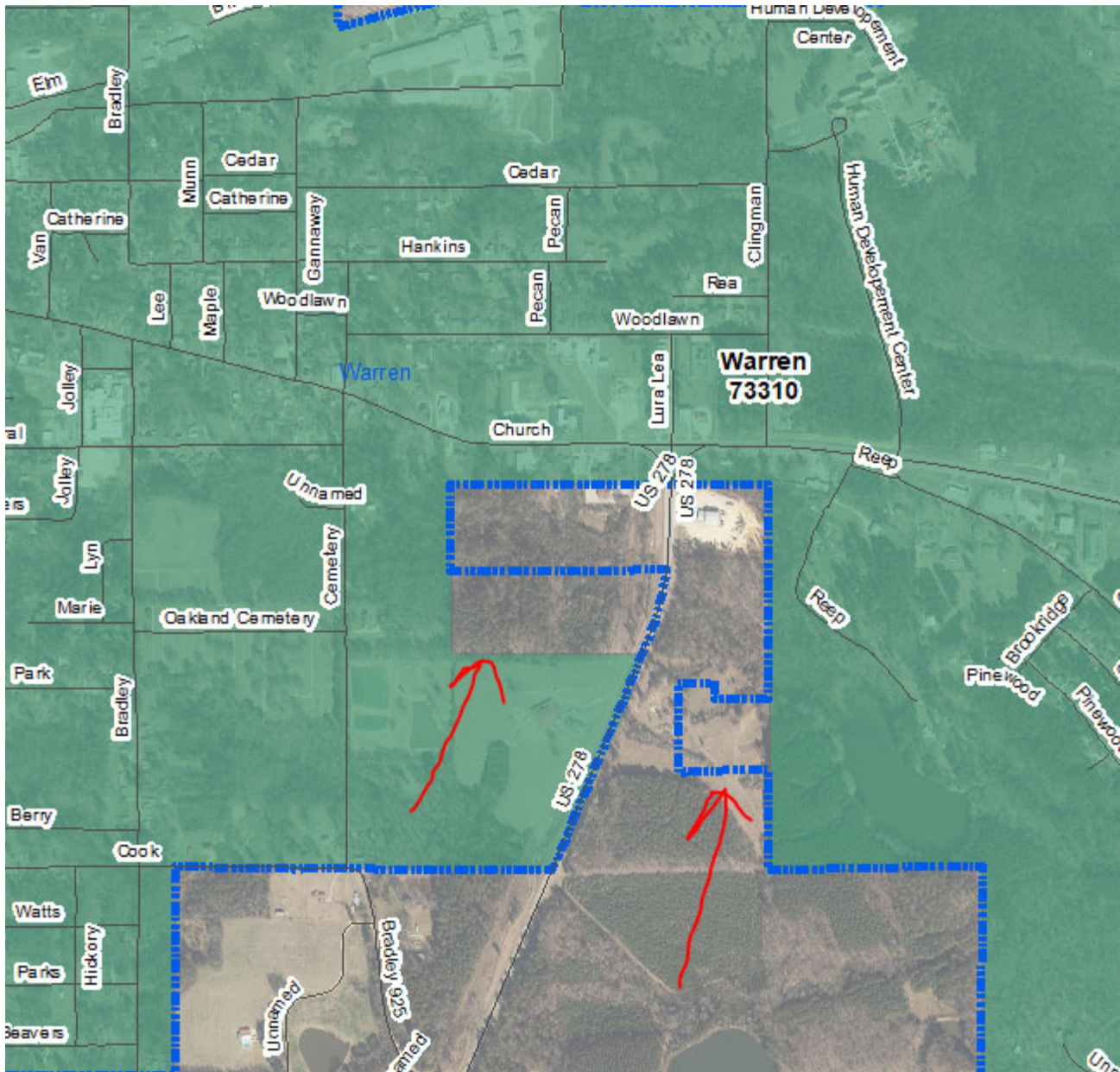
We hope this helps.

Thanks,  
Charlotte

**From:** Jennifer Wheeler <[Jennifer.Wheeler@arkansas.gov](mailto:Jennifer.Wheeler@arkansas.gov)>  
**Sent:** Thursday, January 23, 2020 9:19 AM  
**To:** [charlotte.brown@cityofwarren.com](mailto:charlotte.brown@cityofwarren.com)  
**Cc:** Denisa Pennington <[mayor@cityofwarren.us](mailto:mayor@cityofwarren.us)>  
**Subject:** Warren Boundary

I work for the state agency who maintains a statewide map of cities—we also report those boundaries to the US Census Bureau. When doing a comparison between what we have for Warren and what census has, I notice an area of disagreement. Can you please review the map below and let me know your thoughts? If census is more correct, we may need to look into getting the state map corrected because several state programs, such as DFA sales and use tax lookup, use our boundary data. I look forward to hearing back from you.

Blue line is census and green color is state. Which is more correct, census or state?



*Charlotte Brown*  
Administrative Assistant  
City of Warren  
P.O. Box 352  
Warren, Arkansas 71671  
870-226-6743 (Work)  
870-226-8301 (Fax)