



## Jennifer Wheeler

---

**From:** Jennifer Hobbs <jhobbs@cityofwynne.com>  
**Sent:** Friday, January 24, 2020 1:22 PM  
**To:** Jennifer Wheeler; kwatts@cityofwynne.com  
**Subject:** RE: Wynne Boundary

*The pink state map is correct, but the blue census map is incorrect in both instances.*

*Jennifer Hobbs*

Mayor of Wynne  
Office: 870-238-0027  
Fax: 870-208-1111

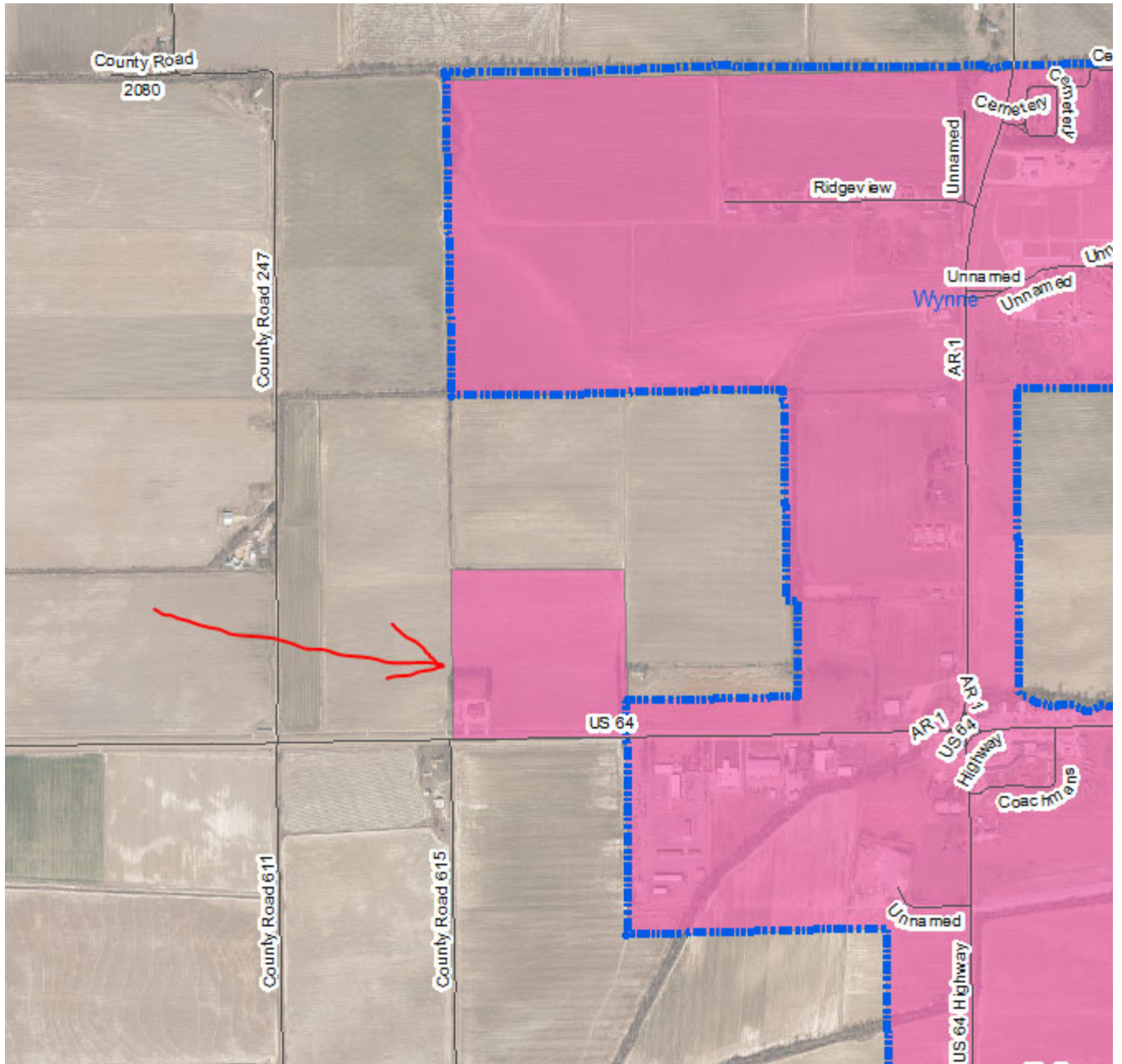
---

**From:** Jennifer Wheeler <Jennifer.Wheeler@arkansas.gov>  
**Sent:** Thursday, January 23, 2020 2:26 PM  
**To:** jhobbs@cityofwynne.com; kwatts@cityofwynne.com  
**Subject:** Wynne Boundary

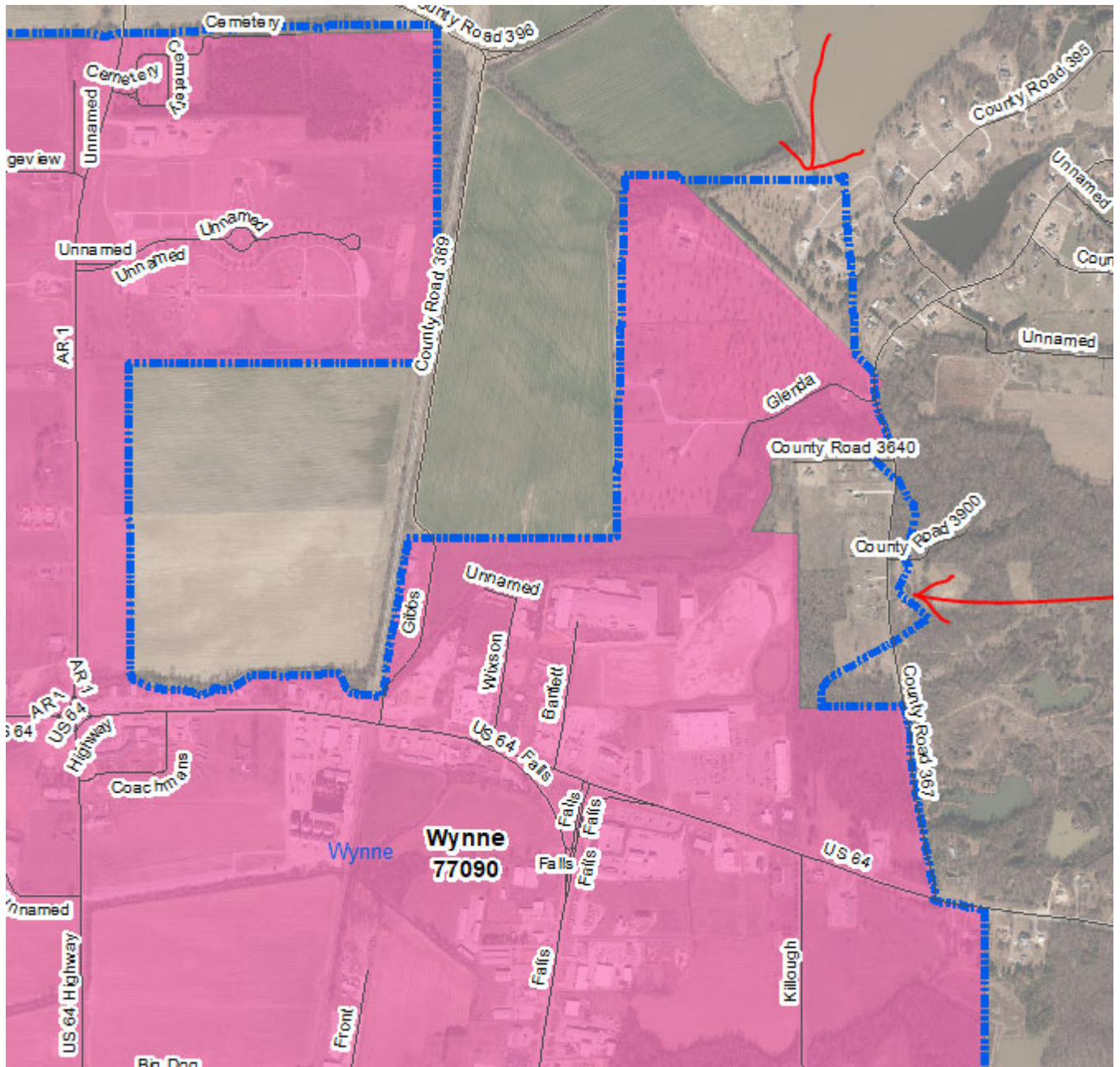
Mayor Hobbs & Mr. Watts,

I work for the state agency who maintains a statewide map of cities—we also report those boundaries to the US Census Bureau. When doing a comparison between what we have for Wynne and what census has, I notice two areas of disagreement. Can you please review the map below and let me know your thoughts? If census is more correct, we may need to look into getting the state map corrected because several state programs, such as DFA sales and use tax lookup, use our boundary data. I look forward to hearing back from you.

Blue line is census and pink color is state. Which is more correct, census or state?







**Jennifer Wheeler – GIS Analyst**

Department of Transformation & Shared Services

Arkansas GIS Office

1 Capitol Mall Ste 6D

Little Rock, AR 72201

501.682.2929 Office

501.454.9524 Mobile

[jennifer.wheeler@arkansas.gov](mailto:jennifer.wheeler@arkansas.gov) Email

<https://www.gis.arkansas.gov> Web