

**Census Geometry Correction: City of Harrell**  
**\*for Census only - was already in state map**








City: Harrell  
 Mayor: Terry Anders, Jr.

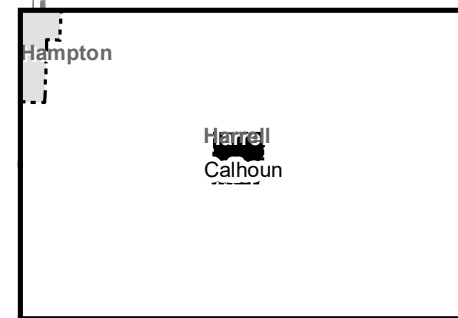
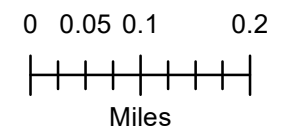
Arkansas Code 14-40-101.

Before an entity undertakes an annexation, consolidation, or detachment proceeding under this chapter, the entity shall coordinate with the Arkansas Geographic Information Systems Office for preparation of legal descriptions and digital mapping for the relevant annexation, consolidation, and detachment areas.

The map contained herein, is evidence, the entity has met requirements of Act 914 of 2015



-  Census Geometry Correction
-  Sections
-  Parcels
-  Minor Road
-  Existing City
-  Neighboring City
-  County Boundary



## Jennifer Wheeler

---

**From:** H A <harrellar@sat-co.net>  
**Sent:** Tuesday, February 04, 2020 10:31 AM  
**To:** Jennifer Wheeler  
**Subject:** Re: Census and State City Limits - Harrell

Jennifer  
The state map is the correct one.

*Jeannie Johnston R/T  
Town of Harrell  
P.O. Box 291  
Harrell, AR 71745  
870-798-2929  
harrellar@sat-co.net*

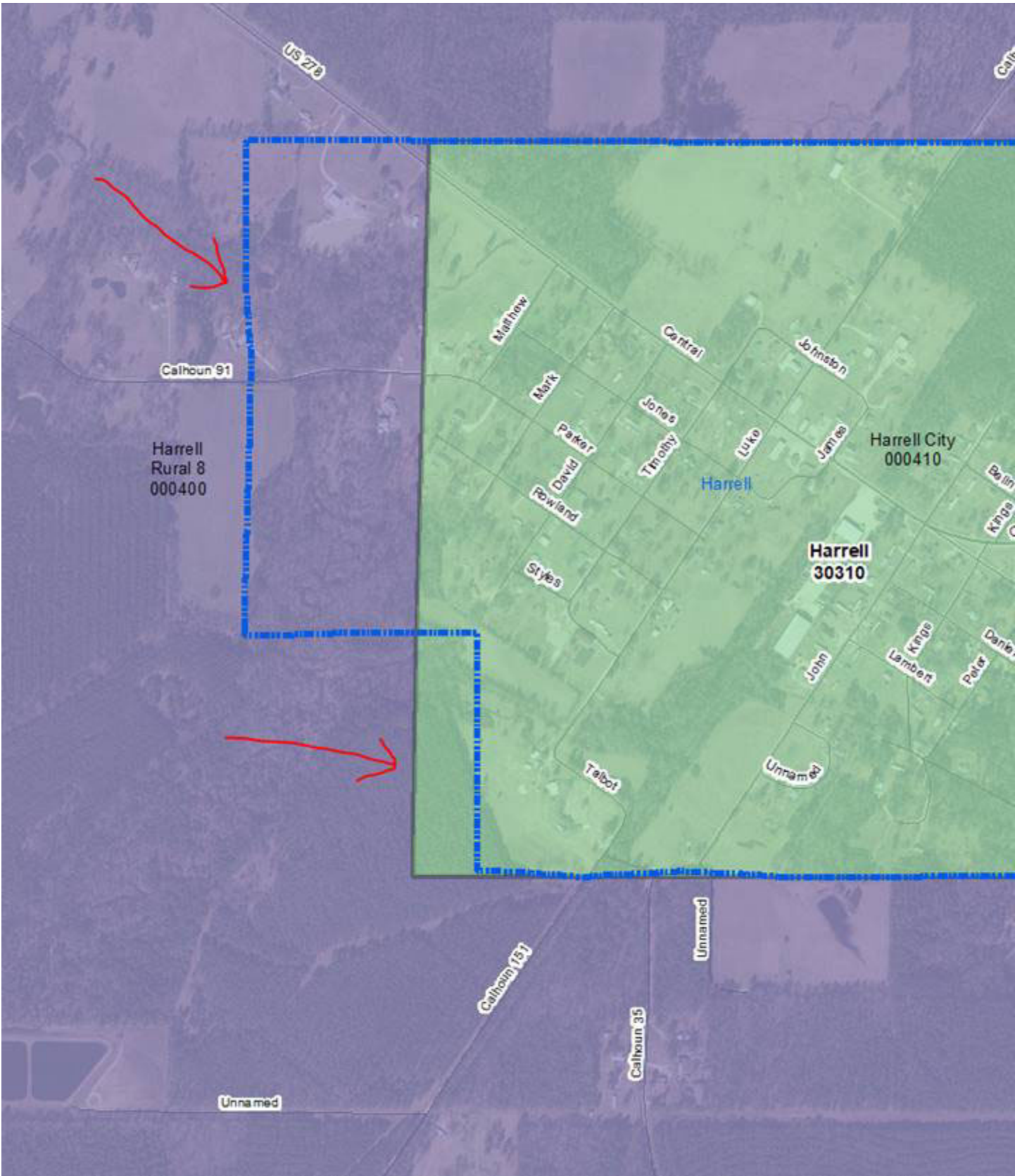
---

**From:** "Jennifer Wheeler" <Jennifer.Wheeler@arkansas.gov>  
**To:** harrellar@sat-co.net  
**Sent:** Friday, January 31, 2020 11:38:16 AM  
**Subject:** Census and State City Limits - Harrell

Hello,

I work for the state agency who maintains a statewide map of cities—we also report those boundaries to the US Census Bureau. When doing a comparison between what we have for Harrell and what census has, I notice an area disagreement. Can you please review the map below and let me know your thoughts? If census is more correct, we may need to look into getting the state map corrected because several state programs, such as DFA sales and use tax lookup, use our boundary data. I look forward to hearing back from you.

Blue line is census. Green color is state. Which is more correct—census or state?



Jennifer Wheeler – GIS Analyst

Department of Transformation & Shared Services  
Arkansas GIS Office  
1 Capitol Mall Ste 6D  
Little Rock, AR 72201  
501.682.2929 Office

501.454.9524 Mobile  
[jennifer.wheeler@arkansas.gov](mailto:jennifer.wheeler@arkansas.gov) Email  
<https://www.gis.arkansas.gov> Web

--

*Jeannie Johnston R/T  
Town of Harrell  
P.O. Box 291  
Harrell, AR 71745  
870-798-2929  
harrellar@sat-co.net*