

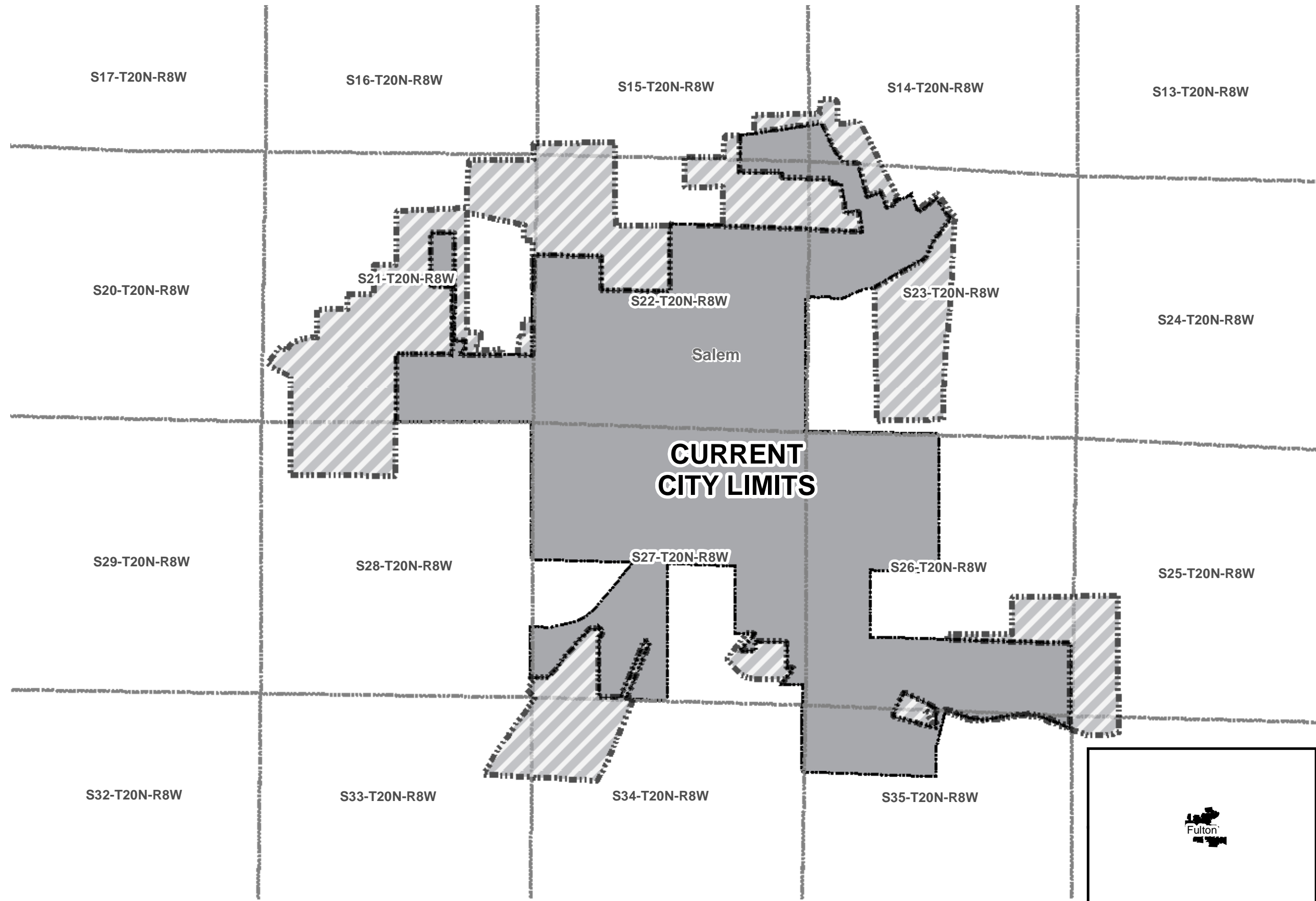
Census Boundary Correction - Remove Area: City of Salem
***for Census only - was already out of state map**

City: Salem
Mayor: Daniel Busch

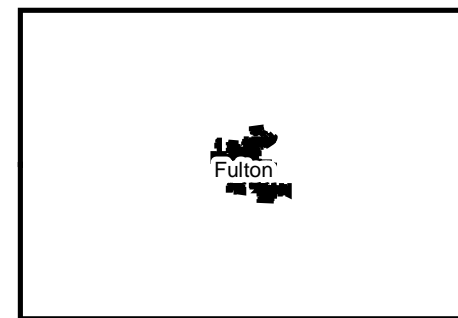
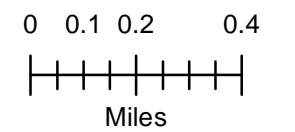
Arkansas Code 14-40-101.

Before an entity undertakes an annexation, consolidation, or detachment proceeding under this chapter, the entity shall coordinate with the Arkansas Geographic Information Systems Office for preparation of legal descriptions and digital mapping for the relevant annexation, consolidation, and detachment areas.

The map contained herein, is evidence, the entity has met requirements of Act 914 of 2015



- Census Correction - Remove
- Sections
- Parcels
- Existing City
- Neighboring City
- County Boundary



Jennifer Wheeler

From: City of Salem <cityofsalemar@gmail.com>
Sent: Wednesday, January 29, 2020 12:53 PM
To: Jennifer Wheeler
Subject: Re: FW: Salem Municipal Boundaries

Jennifer,

Hello. I spoke with Mayor Busch and he believes the state boundaries are correct. If you have any further questions please let me know.

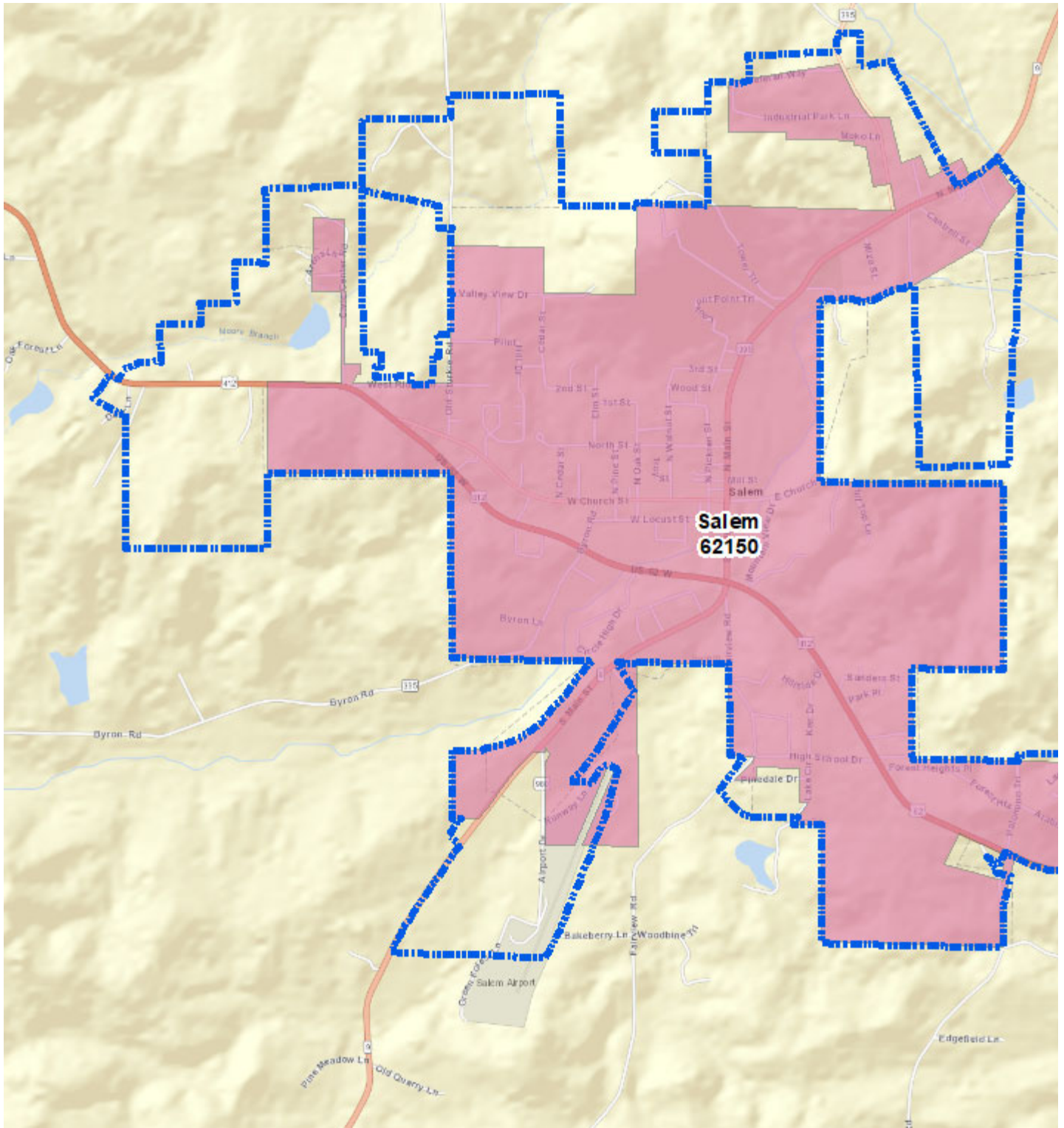
Thank you,
Bertha

On Tue, Jan 21, 2020 at 3:44 PM Jennifer Wheeler <Jennifer.Wheeler@arkansas.gov> wrote:

Bertha,

I work for the state agency who maintains a statewide map of cities—we also report those boundaries to the US Census Bureau. When doing a comparison between what we have for Salem and what census has, I notice large areas of disagreement. David Keck with the county 911 seems to believe our data is more correct than census. Can you please review the map below and let me know your thoughts? If census is more correct, we may need to look into getting the state map corrected because several state programs, such as DFA sales and use tax lookup, use our boundary data. I look forward to hearing back from you.

Blue line is census. Pink color is state. Which is more correct—census or state?



Jennifer Wheeler – GIS Analyst

Department of Transformation & Shared Services
Arkansas GIS Office
1 Capitol Mall Ste 6D

Little Rock, AR 72201
501.682.2929 Office

501.454.9524 Mobile
jennifer.wheeler@arkansas.gov Email
<https://www.gis.arkansas.gov> Web

From: David Keck <fc911@centurytel.net>
Sent: Wednesday, May 15, 2019 7:52 AM
To: Jennifer Wheeler <Jennifer.Wheeler@arkansas.gov>
Subject: RE: Salem Municipal Boundaries

Good morning, the Census data is wrong. I don't know where they came up with those boundaries. The green is correct to the best of my knowledge.

David Keck 911 Coordinator Fulton County AR

870-895-2237 or 870-895-2601

From: Jennifer Wheeler [<mailto:Jennifer.Wheeler@arkansas.gov>]
Sent: Tuesday, May 14, 2019 3:50 PM
To: David Keck - Fulton County
Cc: Lara Wood
Subject: Salem Municipal Boundaries

David,

Long time no talk! Wanted to get your input on something before I contact the City of Salem. We're working on Census municipal boundaries and notice that Census has a large amount of area compared to the state. In many cases, this indicates that Census is wrong. But, if Census is correct and we are wrong, then I need to work with the city to get it corrected. Thought I'd get your thoughts first so I could get a good idea of what to expect from the city.

The purple line is Census and the green is what the state has. Which looks more correct in your opinion?

501.454.9524 Mobile

501.407.0790 Fax

jennifer.wheeler@arkansas.gov Email

<http://www.gis.arkansas.gov> Web