

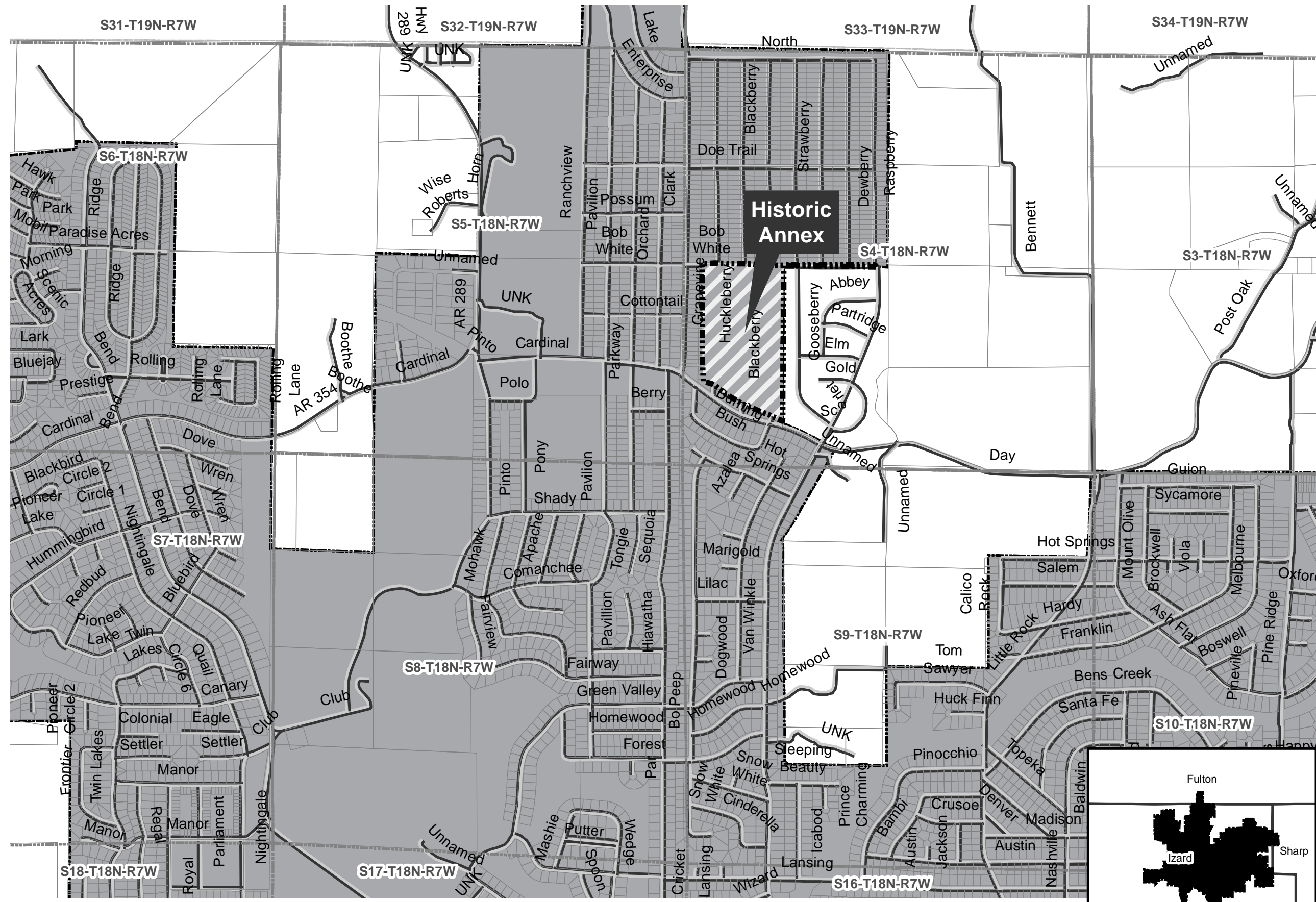
Census Correction Historic Annex: City of Horseshoe Bend
 *for Census only - was already in state map

City: Horseshoe Bend
 Mayor: Craig Huckaby

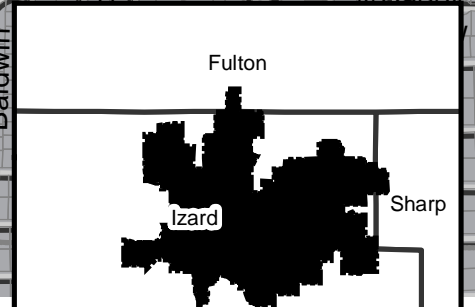
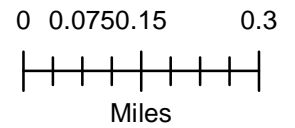
Arkansas Code 14-40-101.

Before an entity undertakes an annexation, consolidation, or detachment proceeding under this chapter, the entity shall coordinate with the Arkansas Geographic Information Systems Office for preparation of legal descriptions and digital mapping for the relevant annexation, consolidation, and detachment areas.

The map contained herein, is evidence, the entity has met requirements of Act 914 of 2015

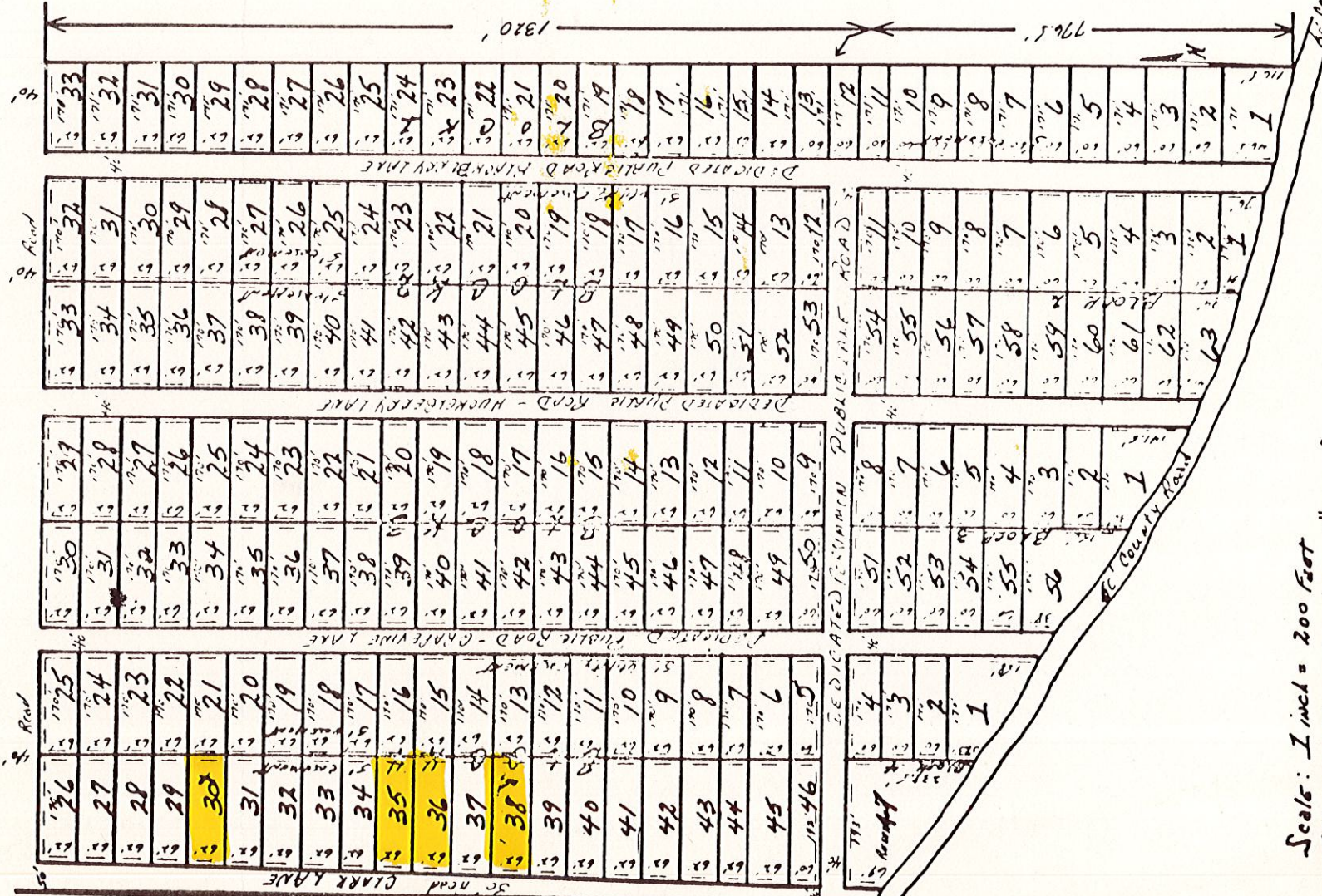


- Historic Annex
- Sections
- Parcels
- Minor Road
- Existing City
- Neighboring City
- County Boundary



RECORDED IN DEED RECORD BOOK NO. 50 PAGE 111A, IZARD CO., ARK., DECEMBER 11, 1962. *Charles Cheatham, Clerk*

TRACT "C"



BILL OF ASSURANCE

STATE OF ARKANSAS, }
 County of IZARD } SS. CERTIFICATE OF RECORD.
 I, Charles Cheatham, Circuit Clerk and Ex-Officio Recorder
 for the County aforesaid, do hereby certify that the annexed and foregoing instrument of writing was filed for record in my office on the 11 day of December
 A. D. 1962, at 11:45 o'clock A. M., and the same is now duly recorded, with the acknowledgments and certificates thereon, in "Record Book 50" page 111 B & 111
 IN WITNESS WHEREOF, I have hereunto set my hand and affixed the seal of
 said Court, this 11 day of December, 19 62
Charles Cheatham
 Co. and Ex-Officio Recorder.

Scale: 1 inch = 200 Feet
 All measurements given in feet.
 Area between Black line - public road & Blue line - 5' utility easement
 This plat consists of: NW 1/4 of SW 1/4 and all that part of the SW 1/4 of SW 1/4 that lies North of the County Road in Section 4, Township 18 North of Range 7 West of the 5th PM, IZARD County, Arkansas.

CHI ADDITION

400