

Jennifer Wheeler

From: cityofwaldo@suddenlinkmail.com
Sent: Thursday, January 23, 2020 9:14 AM
To: Jennifer Wheeler
Subject: Re: Waldo Boundary

Jennifer,

I'm not sure exactly who which would be considered correct.
All I can tell you is all that is within the purple area is within the city limits of Waldo.
The part that extends beyond the purple area to the blue line is out of the city limits of Waldo.

--

Sincerely,
Dianne Rider
City of Waldo

----- Jennifer Wheeler <Jennifer.Wheeler@arkansas.gov> wrote:

> I work for the state agency who maintains a statewide map of cities-we also report those boundaries to the US Census Bureau. When doing a comparison between what we have for Waldo and what census has, I notice an area of disagreement. Can you please review the map below and let me know your thoughts? If census is more correct, we may need to look into getting the state map corrected because several state programs, such as DFA sales and use tax lookup, use our boundary data. I look forward to hearing back from you.

>
> Blue line is census. Purple color is state. Which is more correct-census or state?
> [cid:image001.png@01D5D132.C9C33080]

>
> Jennifer Wheeler - GIS Analyst
> Department of Transformation & Shared Services Arkansas GIS Office
> 1 Capitol Mall Ste 6D
> Little Rock, AR 72201
> 501.682.2929 Office
> 501.454.9524 Mobile
> jennifer.wheeler@arkansas.gov<mailto:jennifer.wheeler@arkansas.gov>
> Email <https://www.gis.arkansas.gov> Web
>

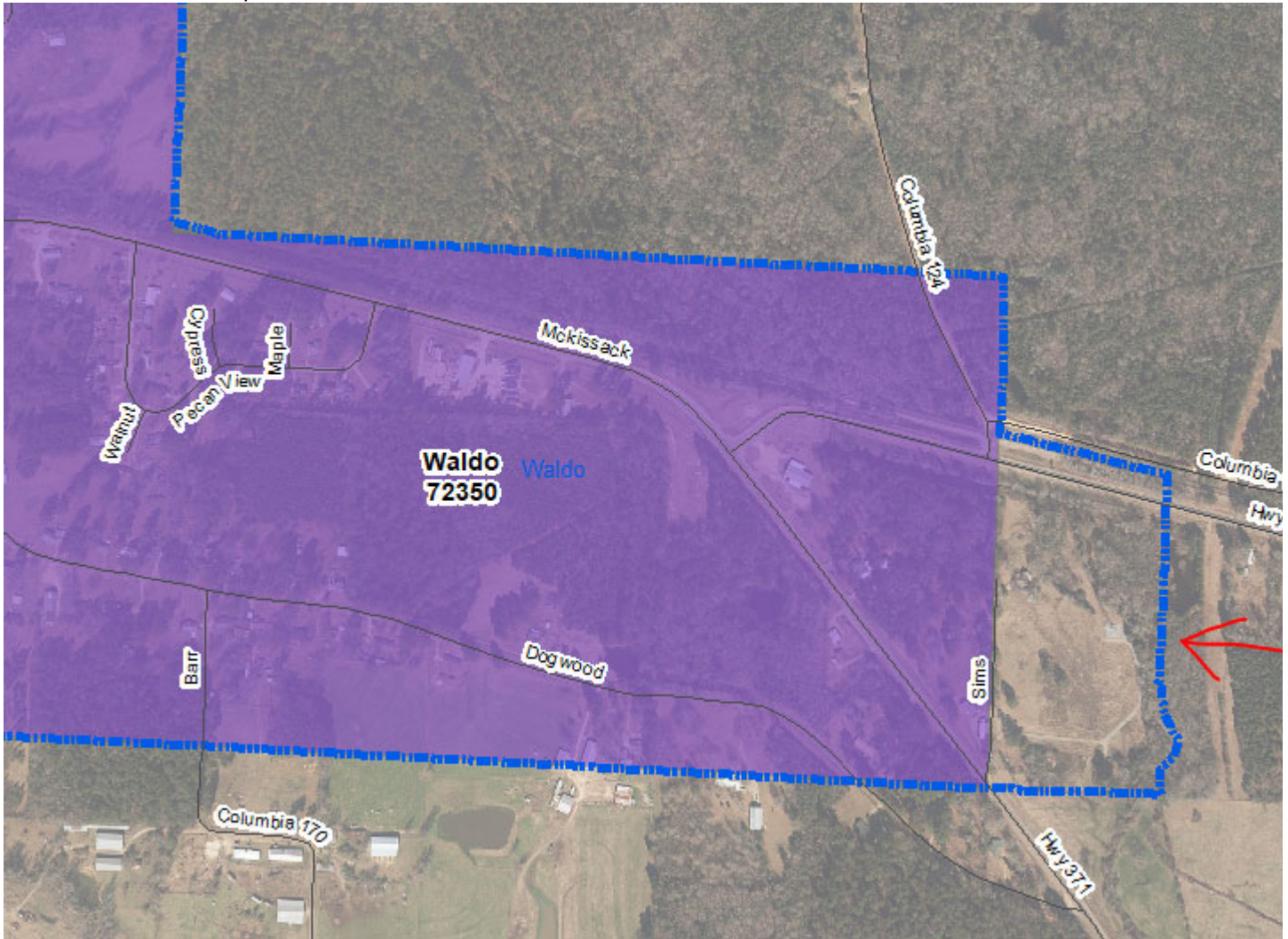
Jennifer Wheeler

From: Jennifer Wheeler
Sent: Wednesday, January 22, 2020 2:47 PM
To: cityofwaldo@suddenlinkmail.com
Subject: Waldo Boundary

Categories: Yellow Category

I work for the state agency who maintains a statewide map of cities—we also report those boundaries to the US Census Bureau. When doing a comparison between what we have for Waldo and what census has, I notice an area of disagreement. Can you please review the map below and let me know your thoughts? If census is more correct, we may need to look into getting the state map corrected because several state programs, such as DFA sales and use tax lookup, use our boundary data. I look forward to hearing back from you.

Blue line is census. Purple color is state. Which is more correct—census or state?



Jennifer Wheeler – GIS Analyst
Department of Transformation & Shared Services
Arkansas GIS Office
1 Capitol Mall Ste 6D

Little Rock, AR 72201
501.682.2929 Office
501.454.9524 Mobile
jennifer.wheeler@arkansas.gov Email
<https://www.gis.arkansas.gov> Web