

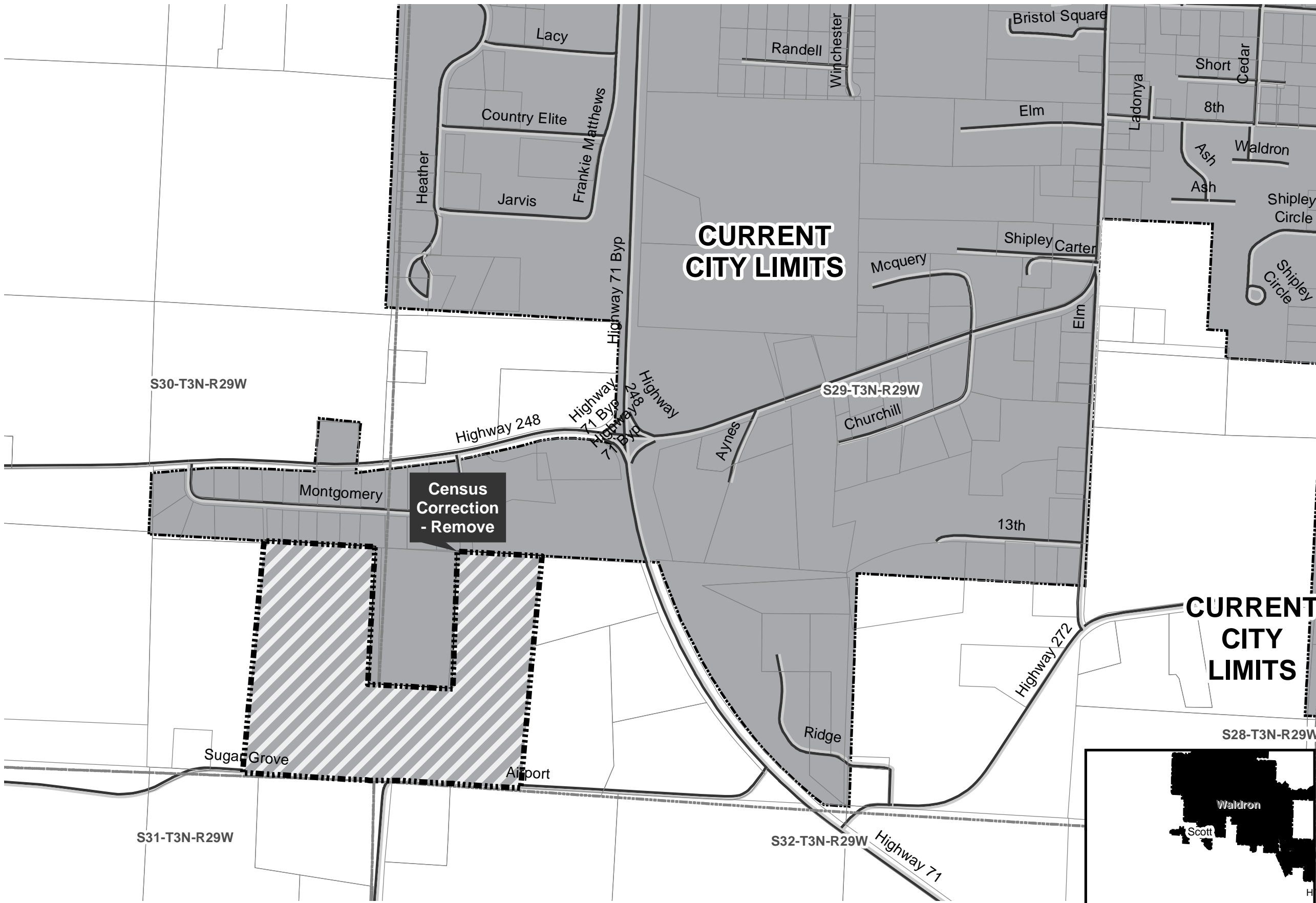
Census Correction Remove Area: City of Waldron
***for Census only - was already in out of map**

City: Waldron
 Mayor: Neil Cherry

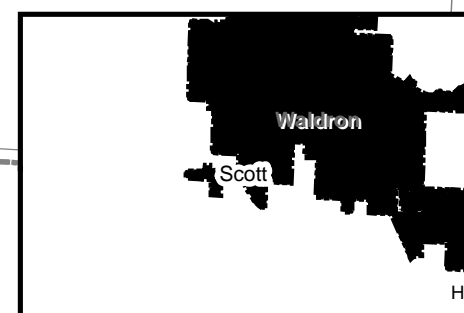
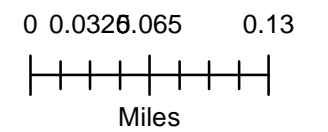
Arkansas Code 14-40-101.

Before an entity undertakes an annexation, consolidation, or detachment proceeding under this chapter, the entity shall coordinate with the Arkansas Geographic Information Systems Office for preparation of legal descriptions and digital mapping for the relevant annexation, consolidation, and detachment areas.

The map contained herein, is evidence, the entity has met requirements of Act 914 of 2015



- Proposed Annex
- Sections
- Parcels
- Minor Road
- Existing City



From: Sherry Johnston <sherryjohnston@cebridge.net>
Sent: Thursday, January 23, 2020 9:15 AM
To: Jennifer Wheeler <Jennifer.Wheeler@arkansas.gov>
Subject: RE: Waldron Boundary

Good Morning, Jennifer,

Well, the map is mixed with correct and incorrect borders! LOL The top red arrow south of Lower Winfield Road should include the area indicated by the US Census Bureau. The same applies to the second red arrow, south of Jarvis St. As you will note, there is an island of unincorporated area south of Hwy 248.

The incorrect part is the third red arrow. The state boundary is correct. The City limits does not extend to Airport Road or Sugar Grove.

Hope this helps. I have worked to get all our boundaries correct, but it just doesn't seem to happen! LOL Thanks for your email.

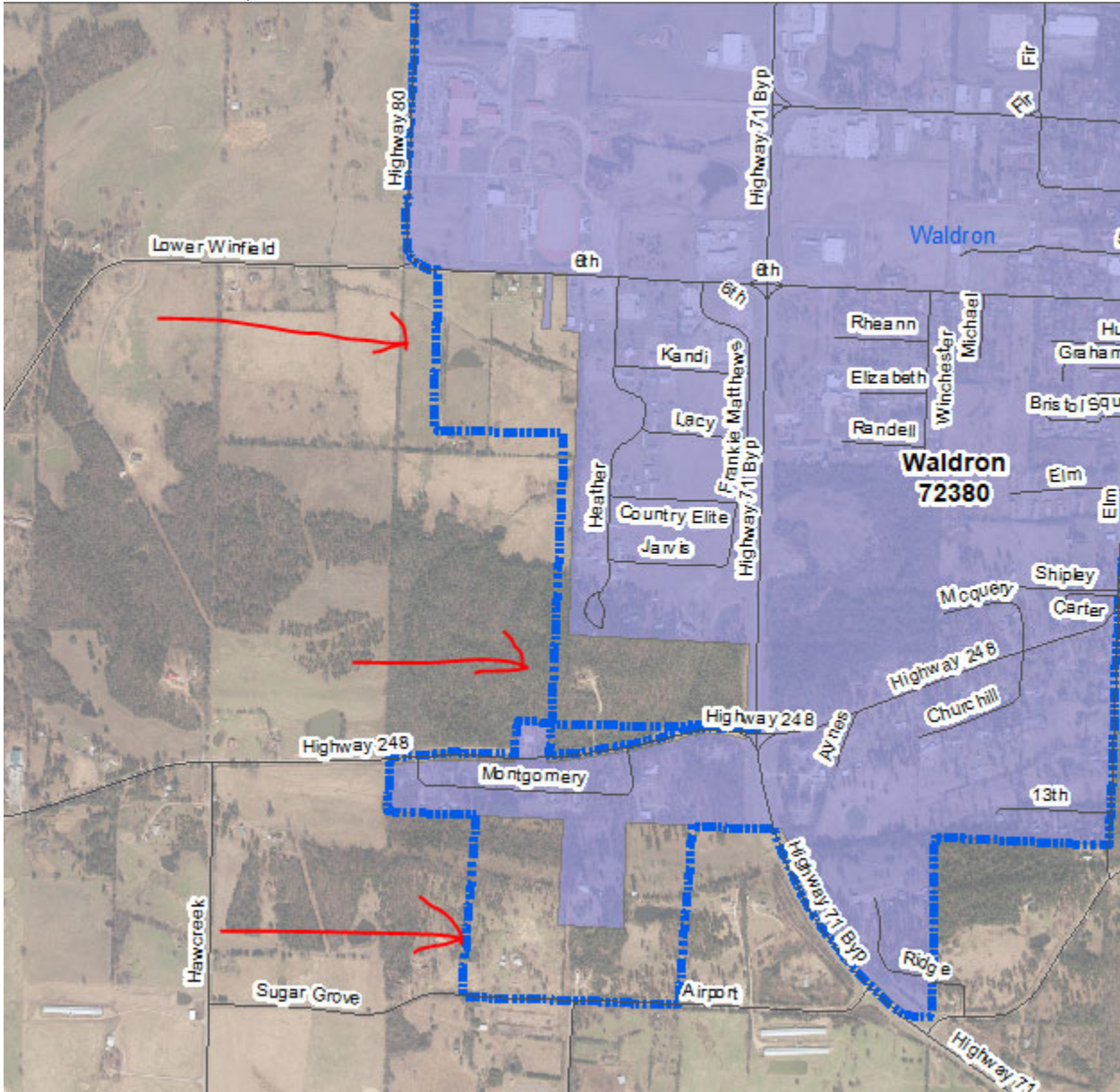
Thanks,
Sherry

From: Jennifer Wheeler [<mailto:Jennifer.Wheeler@arkansas.gov>]
Sent: Wednesday, January 22, 2020 2:56 PM
To: sherryjohnston@cebridge.net
Subject: Waldron Boundary

Sherry,

I work for the state agency who maintains a statewide map of cities—we also report those boundaries to the US Census Bureau. When doing a comparison between what we have for Waldron and what census has, I notice an area of disagreement. Can you please review the map below and let me know your thoughts? If census is more correct, we may need to look into getting the state map corrected because several state programs, such as DFA sales and use tax lookup, use our boundary data. I look forward to hearing back from you.

Blue line is census. Purple color is state. Which is more correct—census or state?



Jennifer Wheeler – GIS Analyst
Department of Transformation & Shared Services
Arkansas GIS Office
1 Capitol Mall Ste 6D
Little Rock, AR 72201
501.682.2929 Office

501.454.9524 Mobile
jennifer.wheeler@arkansas.gov Email
<https://www.gis.arkansas.gov> Web