



Arkansas Secretary of State

John Thurston Arkansas Secretary of State, 500 Woodlane Ave, Little Rock, AR 72201-1094

Municipal Boundary Change Checklist

Act 655 of 2017 and A.C.A. §14-40-103

FILED

JAN 30 2020

KADE HOLLIDAY
COUNTY & PROBATE COURT CLERK

County: Craighead City/Town: Monette

City Ordinance/Resolution No: 2019-2 Date approved: May 28, 2019

County Court Case No: _____ Date Order Filed: _____

Type: Detachment of Land annexed by petition under 14-40-601 A.C.A. 14-40-608

(Choose from the list of Arkansas Code Sections located on the back)

Date Change Effective: May 28, 2019 Set by: Municipal Ordinance Emergency Clause Court Default
(Required by Act 655 of 2017)

For Circuit Court Challenge: Date Order Filed: _____ Upheld Overturned Other (attach explanation)

Please indicate which ward(s) the territory will be assigned to: n/a

(See A.C.A § 14-40-203)

Initiating party:

All Landowners Majority Landowners Municipal Governing Body State Other _____

Supporting Documentation attached (check all that apply):

- File marked copy of City Ordinance/Resolution (required)
- File marked copy of County Court Order or certified annexation election results (required except for A.C.A. §14-40-501)
- Copy of Arkansas GIS approved printed map and certification letter (required)
- Proof of Publication for all Legal Notices (include Hearing, Election, and City Ordinance/Resolution notices)
- File marked copy of Petition Part (if applicable)
- File marked copy of Complaint and final Circuit Court Order (Court Challenge only)

Municipal Contact:

Name: Holly Corter Title: Recorder/Treasurer

Street Address: One Drew Ave. P.O. Box 382

City: Monette St: AR Zip code: 72447

Complete one form per ordinance/resolution, attach it as a cover page to the supporting document set and submit to the County Clerk's Office within 45 days of the Effective Date as required by Act 655 of 2017

County Official:

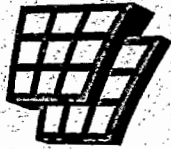
Signature: [Handwritten Signature] Title: County Clerk

Date: 1.30.20

Pursuant to Act 655 of 2017, County Officials must submit a file-marked copy of municipal boundary change documents within 30 days of receipt to: Arkansas Secretary of State, Attn: Municipal Boundary Filing, 500 Woodlane Ave Suite 256, Little Rock, AR 72201-1094

Office of the Arkansas Secretary of State use only

Received by: _____



**ARKANSAS
GIS OFFICE**

**Department of Transformation
and Shared Services**
Governor Asa Hutchinson
Secretary Amy Fecher
Director Shelby Johnson

January 29, 2020

Ms. Vicki Carroll
City of Monette Recorder/Treasurer
PO Box 382
Monette, AR 72447

RE: City of Monette Detachment Coordination Requirement

Ms. Carroll,

Thank you for coordinating with our office as you seek to file detachment ordinances 2019-2 and 2019-3 for the City of Monette AR located in Sections 35, Township 15 North, Range 7 East. This letter represents confirmation that you have properly coordinated with our office (Arkansas GIS Office) as specified in § 14-40-101 (Act 914 of 2015) of the 90th General Assembly.

Our office will wait completion of any additional steps necessary for the proposed boundary change, which normally comes from the Arkansas Secretary of State Elections Division after any appropriate filing by your County Clerk.

Thank you,

Jennifer Wheeler, GIS Analyst

Attachments:
GIS Office Map of Proposed Annexation
Legal Description
Plat of Subdivision
Secretary of State Municipal Change Checklist

H:\City_Annexations\Cities\Monette\2019_Detachments\Doc\2019_Detachments_Monette_Annexation_Coordination_Letter.docx



Municipal Annexation, Detachment, and Incorporation Reference

Annexation of Territories Contiguous to County Seat A.C.A §14-40-201

Annexation of Territories in another Judicial District (multiple county seats) A.C.A. §14-40-202

Annexation of City Park or Airport (automatic) A.C.A §14-40-204

Annexation of building on boundary of two municipalities (written notice) A.C.A. §14-40-207

Annexation by Election (contiguous land) A.C.A. §14-40-302

Annexation of land in adjoining County A.C.A §14-40-401

Annexation of surrounded unincorporated area (island/doughnut holes) by ordinance A.C.A. §14-40-501

Annexation by Petition of majority of Landowners A.C.A. §14-40-602

Annexation by Petition of all Landowners A.C.A §14-40-609

Consolidation of two municipalities by Election A.C.A §14-40-1201

Annexation with Detachment from another municipality at landowner request A.C.A §14-40-2001

Annexation with Detachment from adjoining city at city request A.C.A §14-40-2101

~~Detachment of Land annexed by petition under §14-40-601 A.C.A §14-40-608~~

Detachment of municipal lands back to County by election A.C.A. §14-40-1801

Detachment of unsuitable land by municipal resolution A.C.A §14-40-1901

Incorporation by direct petition of landowners A.C.A §14-38-101

Incorporation by petition for special election A.C.A §14-38-115

Surrender of Charter (Disincorporation) by second class city A.C.A §14-39-101

ORDINANCE NO. 2019-2

FILED

JAN 30 2020

KADE HOLLIDAY
COUNTY & PROBATE COURT CLERK

THE CITY OF MONETTE
ORDINANCE OF THE CITY COUNCIL

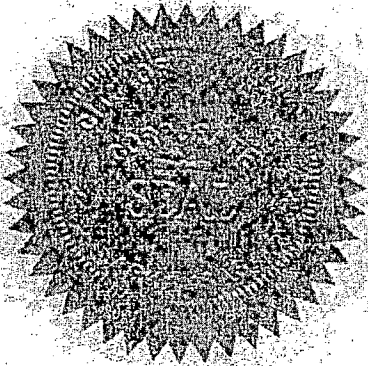
AN ORDINANCE DETACHING CERTAIN LANDS FROM THE
CITY OF MONETTE, ARKANSAS.

WHEREAS, an affidavit of Detachment was filed with the City Clerk of Monette, Arkansas, by Madison Birdno the real estate owners of the hereinafter described territory praying that said territory be detached from the City of Monette, Arkansas.

NOW THEREFORE, the city council of Monette, Arkansas upon payment of all costs by the real estate owners hereby approves the ordinance to detach the following described territory located in the County of Craighead, State of Arkansas:

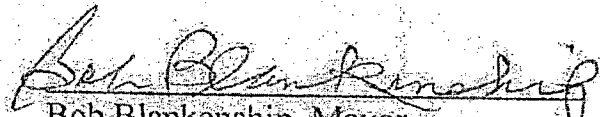
All of Lot 3 of the Billy Taylor Subdivision to the City of Monette, Arkansas, as shown by Plat in Deed Record 121, page 237 in the Circuit Clerk's Office at Jonesboro, Arkansas.

Passed and adopted by the City Council of the City of Monette this 28 day of May, 2019.



APPROVED:

CITY OF MONETTE, ARKANSAS


Bob Blankenship, Mayor

Attest:


Vicki Carroll, Recorder/Treasurer

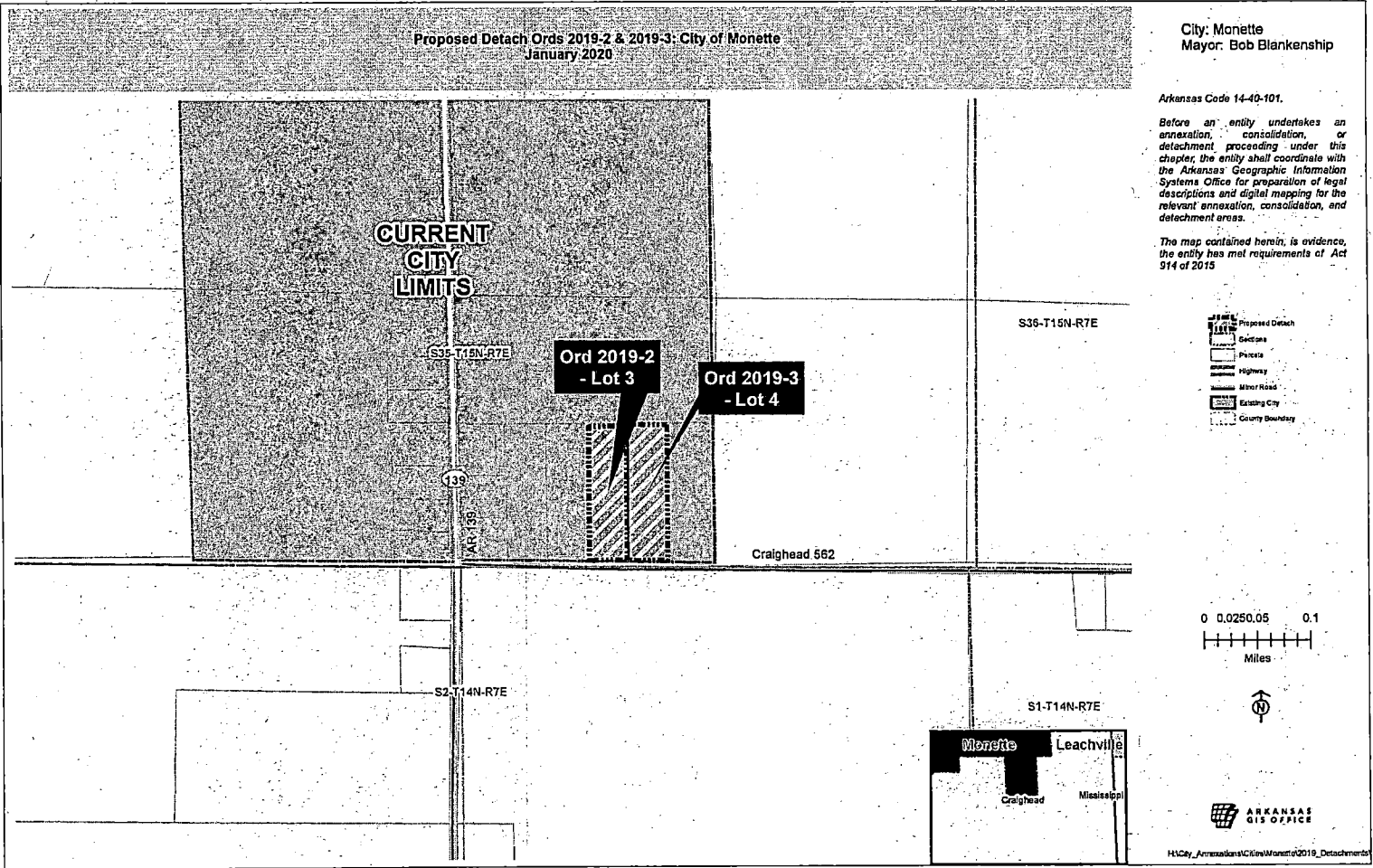
Proposed Detach Ords 2019-2 & 2019-3: City of Monette
January 2020

City: Monette
Mayor: Bob Blankenship

Arkansas Code 14-40-101.

Before an entity undertakes an annexation, consolidation, or detachment proceeding under this chapter, the entity shall coordinate with the Arkansas Geographic Information Systems Office for preparation of legal descriptions and digital mapping for the relevant annexation, consolidation, and detachment areas.

The map contained herein, in evidence, the entity has met requirements of Act 914 of 2015





Arkansas Secretary of State

John Thurston Arkansas Secretary of State, 500 Woodlane Ave, Little Rock, AR 72201-1094

Municipal Boundary Change Checklist

Act 655 of 2017 and A.C.A. §14-40-103

FILED

JAN 30 2020

KADE HOLLIDAY
COUNTY & PROBATE COURT CLERK

County: Craighead City/Town: Monette

City Ordinance/Resolution No: 2019-3 Date approved: May 28, 2019

County Court Case No: _____ Date Order Filed: _____

Type: Detachment of Land annexed by petition under 14-40-601 A.C.A. 14-40-608

(Choose from the list of Arkansas Code Sections located on the back)

Date Change Effective: May 28, 2019 Set by: Municipal Ordinance Emergency Clause Court Default
(Required by Act 655 of 2017)

For Circuit Court Challenge: Date Order Filed: _____ Upheld Overturned Other (attach explanation)

Please indicate which ward(s) the territory will be assigned to: n/a
(See A.C.A § 14-40-203)

Initiating party:

All Landowners Majority Landowners Municipal Governing Body State Other _____

Supporting Documentation attached (check all that apply):

- File marked copy of City Ordinance/Resolution (required)
- File marked copy of County Court Order or certified annexation election results (required except for A.C.A. §14-40-501)
- Copy of Arkansas GIS approved printed map and certification letter (required)
- Proof of Publication for all Legal Notices (include Hearing, Election, and City Ordinance/Resolution notices)
- File marked copy of Petition Part (if applicable)
- File marked copy of Complaint and final Circuit Court Order (Court Challenge only)

Municipal Contact:

Name: Holly Corter Title: Recorder/Treasurer

Street Address: One Drew Ave. P.O. Box 382

City: Monette St: AR Zip code: 72447

Complete one form per ordinance/resolution, attach it as a cover page to the supporting document set and submit to the County Clerk's Office within 45 days of the Effective Date as required by Act 655 of 2017

County Official:

Signature: [Handwritten Signature] Title: County Clerk
Date: 1.30.20

Pursuant to Act 655 of 2017, County Officials must submit a file-marked copy of municipal boundary change documents within 30 days of receipt to: Arkansas Secretary of State, Attn: Municipal Boundary Filing, 500 Woodlane Ave Suite 256, Little Rock, AR 72201-1094

Office of the Arkansas Secretary of State use only

Received by: _____

Municipal Annexation, Detachment, and Incorporation Reference

- Annexation of Territories Contiguous to County Seat A.C.A §14-40-201
- Annexation of Territories in another Judicial District (multiple county seats) A.C.A. §14-40-202
 - Annexation of City Park or Airport (automatic) A.C.A §14-40-204
- Annexation of building on boundary of two municipalities (written notice) A.C.A. §14-40-207
 - Annexation by Election (contiguous land) A.C.A. §14-40-302
 - Annexation of land in adjoining County A.C.A §14-40-401
- Annexation of surrounded unincorporated area (island/doughnut holes) by ordinance A.C.A. §14-40-501
 - Annexation by Petition of majority of Landowners A.C.A. §14-40-602
 - Annexation by Petition of all Landowners A.C.A §14-40-609
- Consolidation of two municipalities by Election A.C.A §14-40-1201
- Annexation with Detachment from another municipality at landowner request A.C.A §14-40-2001
 - Annexation with Detachment from adjoining city at city request A.C.A §14-40-2101
 - Detachment of Land annexed by petition under §14-40-601 A.C.A §14-40-608
 - Detachment of municipal lands back to County by election A.C.A. §14-40-1801
 - Detachment of unsuitable land by municipal resolution A.C.A §14-40-1901
 - Incorporation by direct petition of landowners A.C.A §14-38-101
 - Incorporation by petition for special election A.C.A §14-38-115
- Surrender of Charter (Disincorporation) by second class city A.C.A §14-39-101

ORDINANCE NO. 2019-3

FILED

JAN 30 2020

KADE HOLLIDAY
COUNTY & PROBATE COURT CLERK

THE CITY OF MONETTE
ORDINANCE OF THE CITY COUNCIL

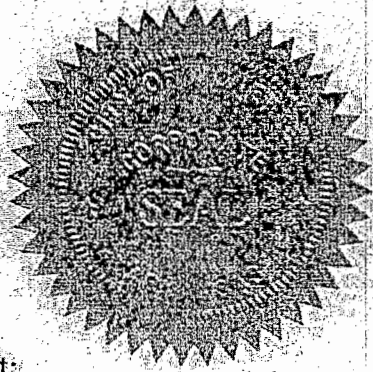
AN ORDINANCE DETACHING CERTAIN LANDS FROM THE
CITY OF MONETTE, ARKANSAS.

WHEREAS, an affidavit of Detachment was filed with the City Clerk of Monette, Arkansas, by Micheal Pollard and Sara Pollard the real estate owners of the hereinafter described territory praying that said territory be detached from the City of Monette, Arkansas.

NOW THEREFORE, the city council of Monette, Arkansas upon payment of all costs by the real estate owners hereby approves the ordinance to detach the following described territory located in the County of Craighead, State of Arkansas:

Lot 4 of the Billy Taylor subdivision to the City of Monette, Arkansas in the S1/2, SE 1/4 sections 35, T15N, R7E, Craighead County, Arkansas.

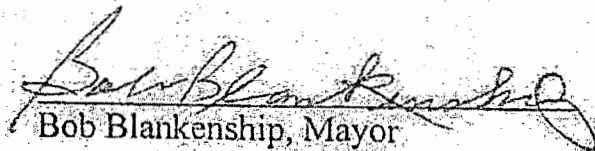
Passed and adopted by the City Council of the City of Monette this 28 day of May, 2019.



Attest:

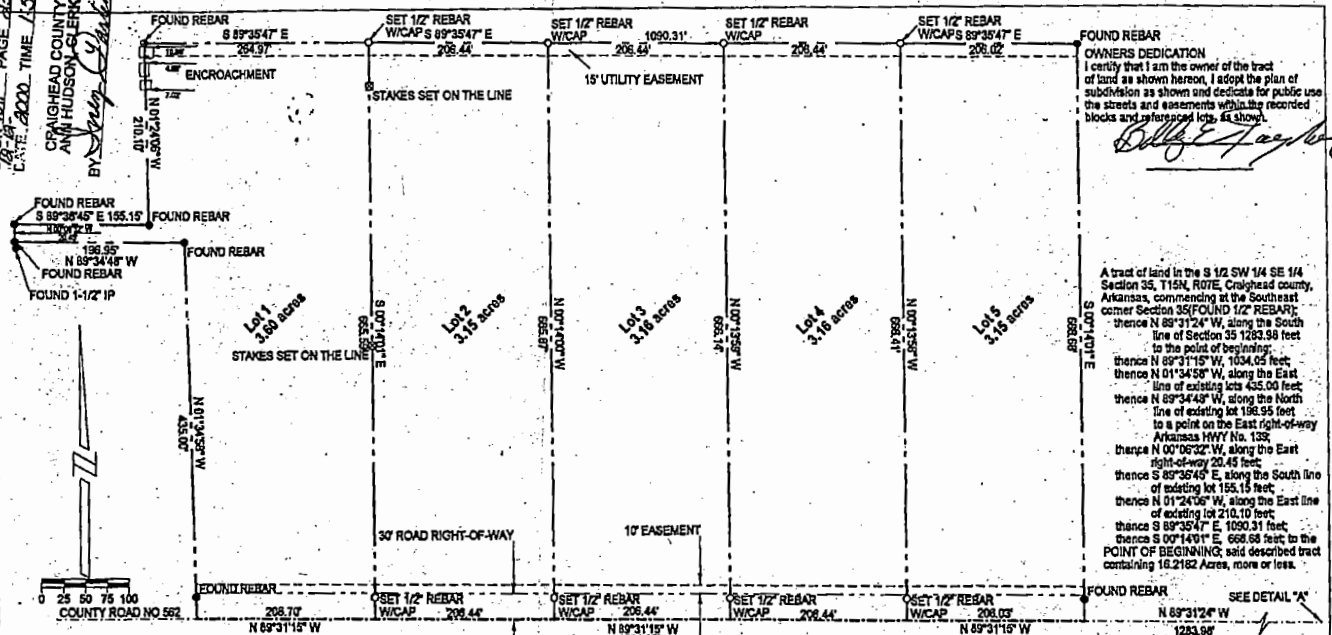
APPROVED:

CITY OF MONETTE, ARKANSAS


Bob Blankenship, Mayor


Vicki Carroll, Recorder/Treasurer

RECORDED
 BOOK 181 PAGE 217
 DATE 12/11/2000 TIME 1:50 PM
 CRAIGHEAD COUNTY
 ANN HUDSON CLERK
 BY *[Signature]*



OWNERS DEDICATION
 I certify that I am the owner of the tract of land as shown hereon, I dedicate for public use the streets and easements within the recorded blocks and referenced lots as shown.

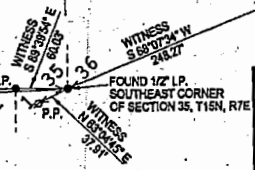
A tract of land in the S 1/2 SW 1/4 SE 1/4 Section 35, T15N, R7E, Craighead county, Arkansas, commencing at the Southeast corner Section 35 (FOUND 1/2" REBAR); thence N 89°31'24" W, along the South line of Section 35 1283.98 feet to the point of beginning; thence N 01°34'58" W, along the East line of existing lots 435.00 feet; thence N 01°34'58" W, along the East line of existing lots 435.00 feet; thence N 01°34'58" W, along the East line of existing lots 435.00 feet; thence S 89°34'43" W, along the North line of existing lot 158.55 feet to a point on the East right-of-way Arkansas HWY No. 133; thence N 00°06'32" W, along the East right-of-way 20.43 feet; thence S 89°34'43" W, along the South line of existing lot 158.55 feet; thence N 01°24'06" W, along the East line of existing lot 210.10 feet; thence S 89°34'43" W, 1090.31 feet; thence S 01°14'01" E, 658.58 feet to the POINT OF BEGINNING, said described tract containing 16.2182 Acres, more or less.

**LOTS 1 TO 5
 BILLY TAYLOR SUBDIVISION
 S 1/2 SW 1/4 SE 1/4 SECTION 35, T15N, R7E,
 CRAIGHEAD COUNTY, ARKANSAS**



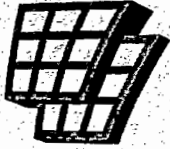
[Signature]
 CLIENT: BILLY TAYLOR

DETAIL "A"



Archer Engineering, P.A.
 Consulting Engineers - Land Surveyors
 1005 East Moutrie
 Blytheville, Arkansas 72315
 (870) 783-4184
 Fax: (870) 783-7351

| | |
|-----------------|--------------------------------|
| SCALE 1"=100' | |
| DATE 12/11/2000 | PREPARED BY: M ARCHER T L H |
| JOB NO. JJC | PAGE 1 OF 1 |



**ARKANSAS
GIS OFFICE**

**Department of Transformation
and Shared Services**
Governor Asa Hutchinson
Secretary Amy Fecher
Director Shelby Johnson

January 29, 2020

Ms. Vickki Carroll
City of Monette Recorder/Treasurer
PO Box 382
Monette, AR 72447

RE: City of Monette Detachment Coordination Requirement

Ms. Carroll,

Thank you for coordinating with our office as you seek to file detachment ordinances 2019-2 and 2019-3 for the City of Monette AR located in Sections 35, Township 15 North, Range 7 East. This letter represents confirmation that you have properly coordinated with our office (Arkansas GIS Office) as specified in § 14-40-101 (Act 914 of 2015) of the 90th General Assembly.

Our office will wait completion of any additional steps necessary for the proposed boundary change, which normally comes from the Arkansas Secretary of State Elections Division after any appropriate filing by your County Clerk.

Thank you,

Jennifer Wheeler, GIS Analyst

Attachments:
GIS Office Map of Proposed Annexation
Legal Description
Plat of Subdivision
Secretary of State Municipal Change Checklist

H:\City_Annexations\Cities\Monette\2019_Detachments\Doc\2019_Detachments_Monette_Annexation_Coordination_Letter.docx

