

Jennifer Wheeler

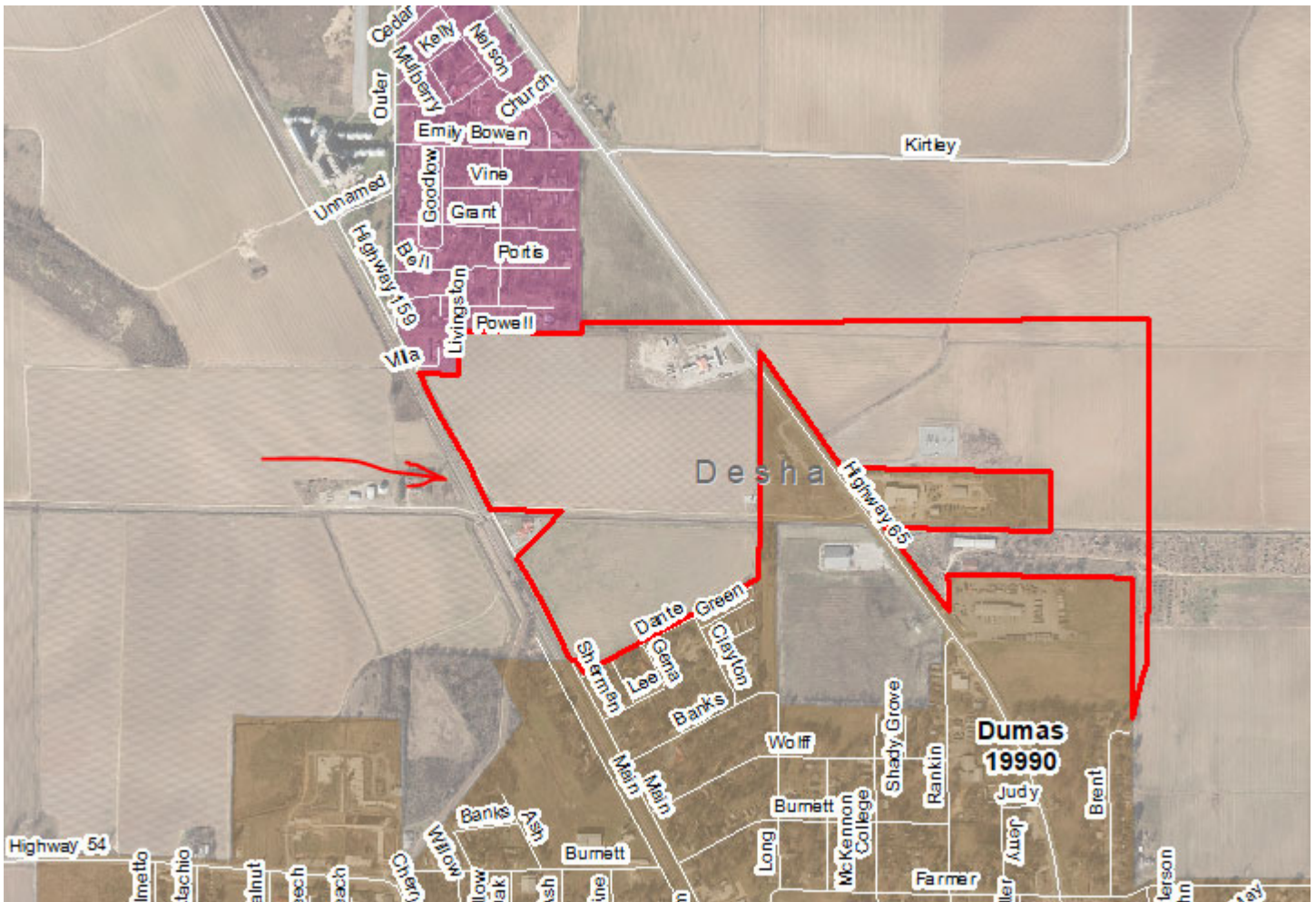
From: Shelly Billingsley <dumas@centurytel.net>
Sent: Wednesday, April 22, 2020 1:49 PM
To: Jennifer Wheeler
Cc: flora simon mayor
Subject: RE: Dumas City Limits - Census

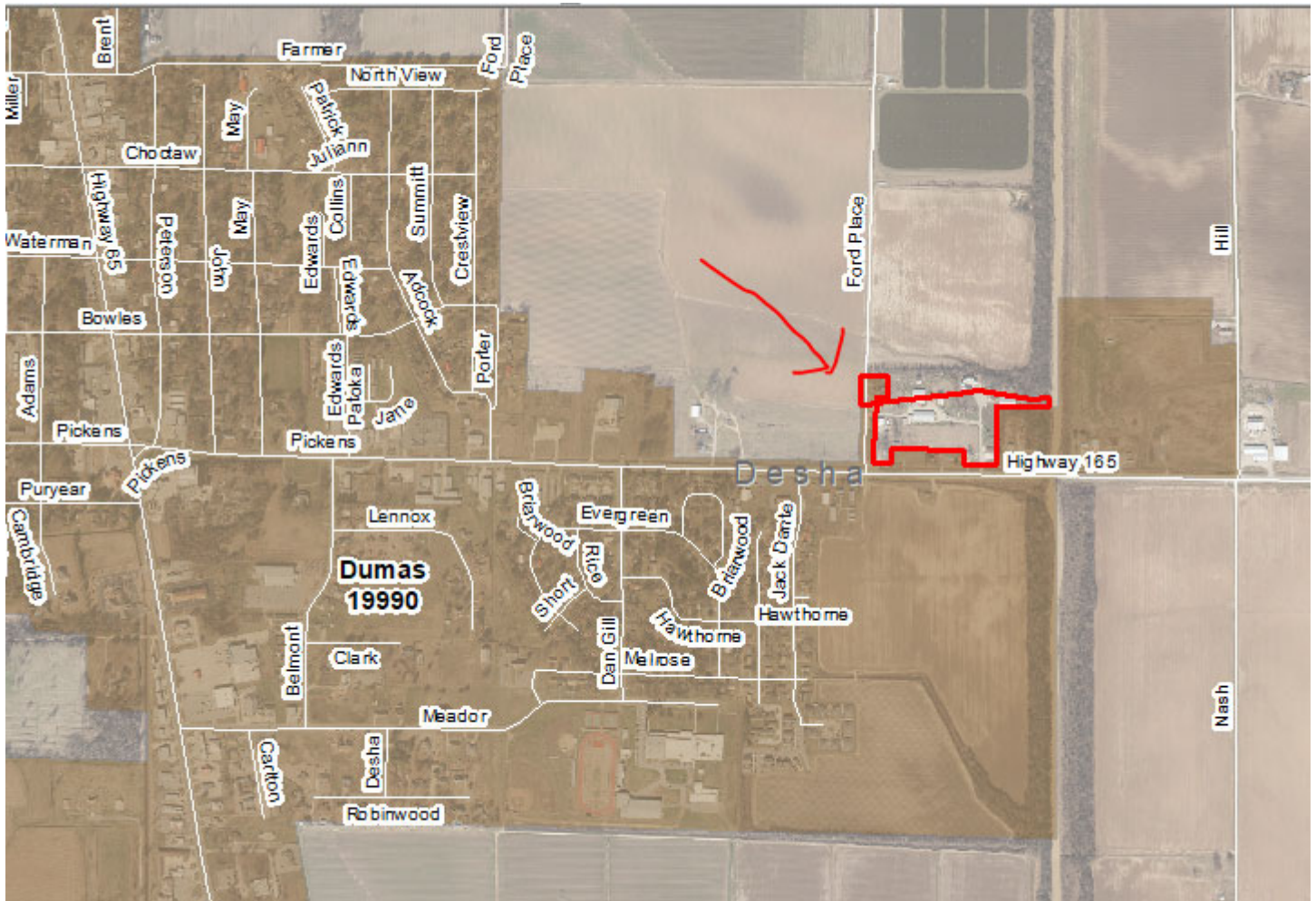
Okay to change. Thanks!

From: Jennifer Wheeler <Jennifer.Wheeler@arkansas.gov>
Sent: Wednesday, April 22, 2020 9:53 AM
To: dumas@centurytel.net
Subject: Dumas City Limits - Census

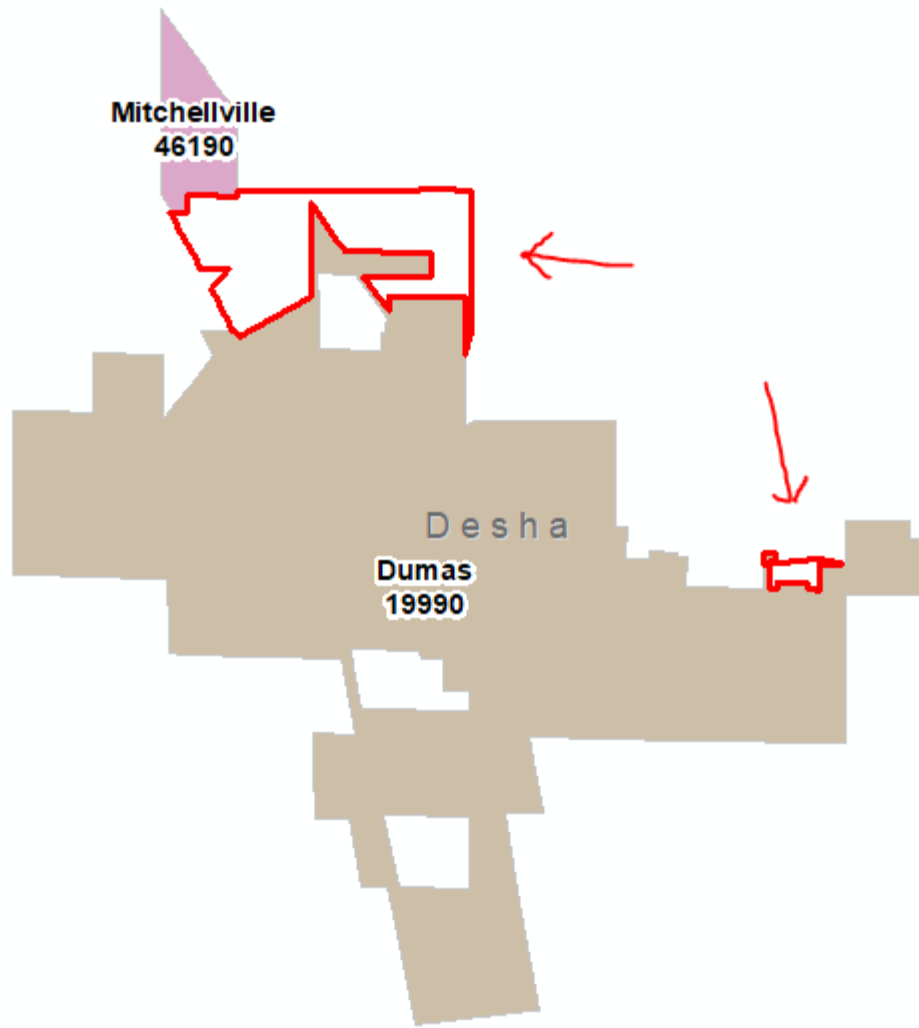
Hello—I work for a state agency that coordinates municipal boundaries with the US Census Bureau. There are two spots in Dumas that both the state and the county assessor show to be outside of the city while the census shows them to be in. If these areas are indeed outside of the city limits, the Census is asking that we get city approval to correct their maps—which can be done by replying to this email.

Are these areas outside of the city limits and can be removed from census maps? Thank you in advance for your help with this!





Here's a wider view of both



Jennifer Wheeler – GIS Analyst

Department of Transformation & Shared Services

Arkansas GIS Office

1 Capitol Mall Ste 6D

Little Rock, AR 72201

501.682.2929 Office

501.454.9524 Mobile

jennifer.wheeler@arkansas.gov Email

<https://www.gis.arkansas.gov> Web