

Jennifer Wheeler

From: City of Holly Grove <cityofhollygrove@yahoo.com>
Sent: Monday, May 04, 2020 9:42 AM
To: Jennifer Wheeler
Subject: Re: Holly Grove Limits - Census

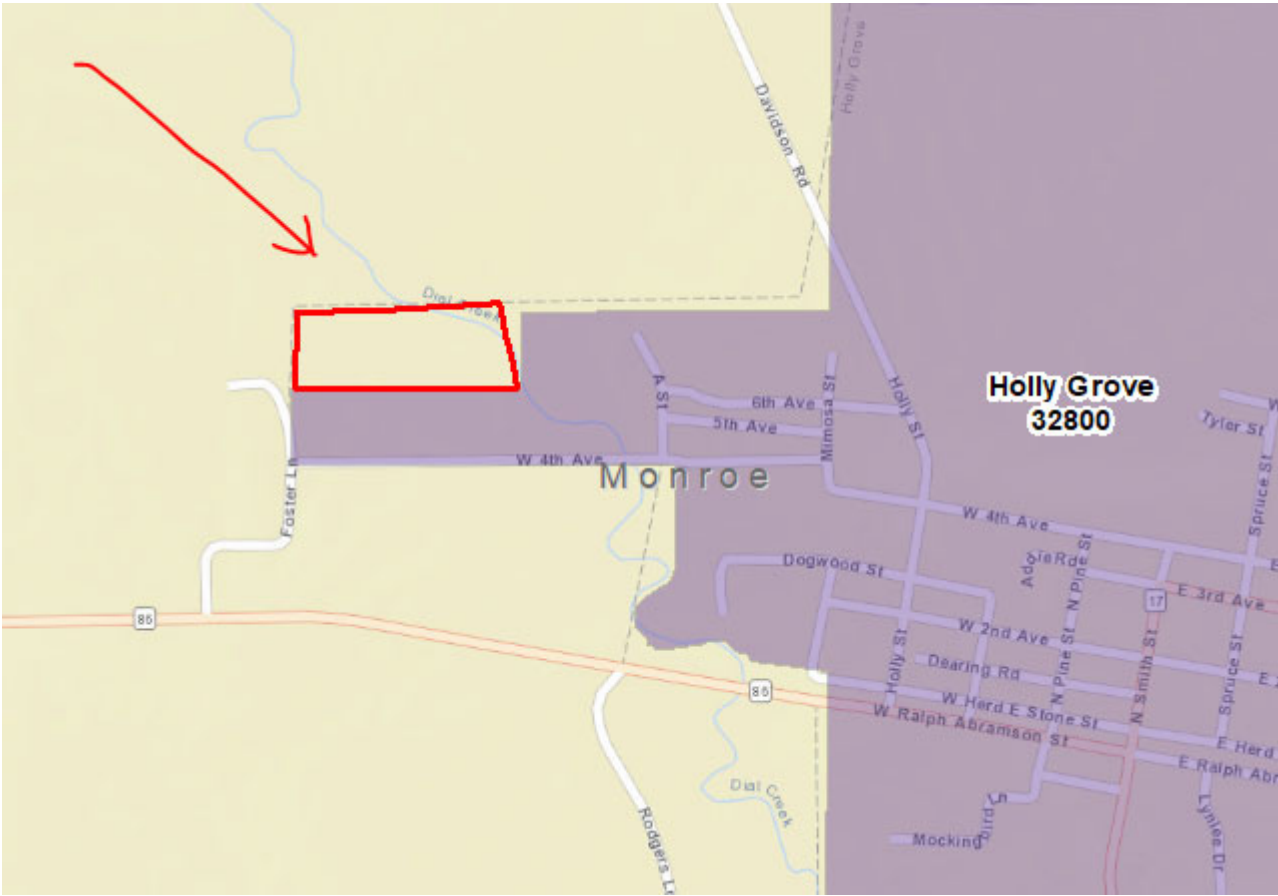
It is city property, it was our park, but it was not annexed into the city limits.

City of Holly Grove
PO Box 430
Holly Grove, AR 72069-0430
(870)462-3422

On Monday, May 4, 2020, 09:23:00 AM CDT, Jennifer Wheeler <jennifer.wheeler@arkansas.gov> wrote:

I work for a state agency that coordinates municipal boundaries with the US Census Bureau. There is an area in Holly Grove that Census is showing to be inside the city limits while the state shows to be outside. If this area is truly outside of the city limits, the Census has asked that we get approval from the City to remove it from their maps, which can be done by replying to this email. If this area is INSIDE the city limits, then I will need to work with you to get it updated on the state map.

Is this area in red inside or outside of the city limits? Thank you in advance for your help with this!



Jennifer Wheeler – GIS Analyst

Department of Transformation & Shared Services
Arkansas GIS Office
1 Capitol Mall Ste 6D
Little Rock, AR 72201
501.682.2929 Office

501.454.9524 Mobile
jennifer.wheeler@arkansas.gov Email
<https://www.gis.arkansas.gov> Web