

From: [Kathy Howard](#)
To: [Jennifer Wheeler](#)
Subject: RE: Diaz Enclave Annexation - Map Coordination
Date: Wednesday, February 3, 2021 3:13:26 PM
Attachments: [image001.png](#)

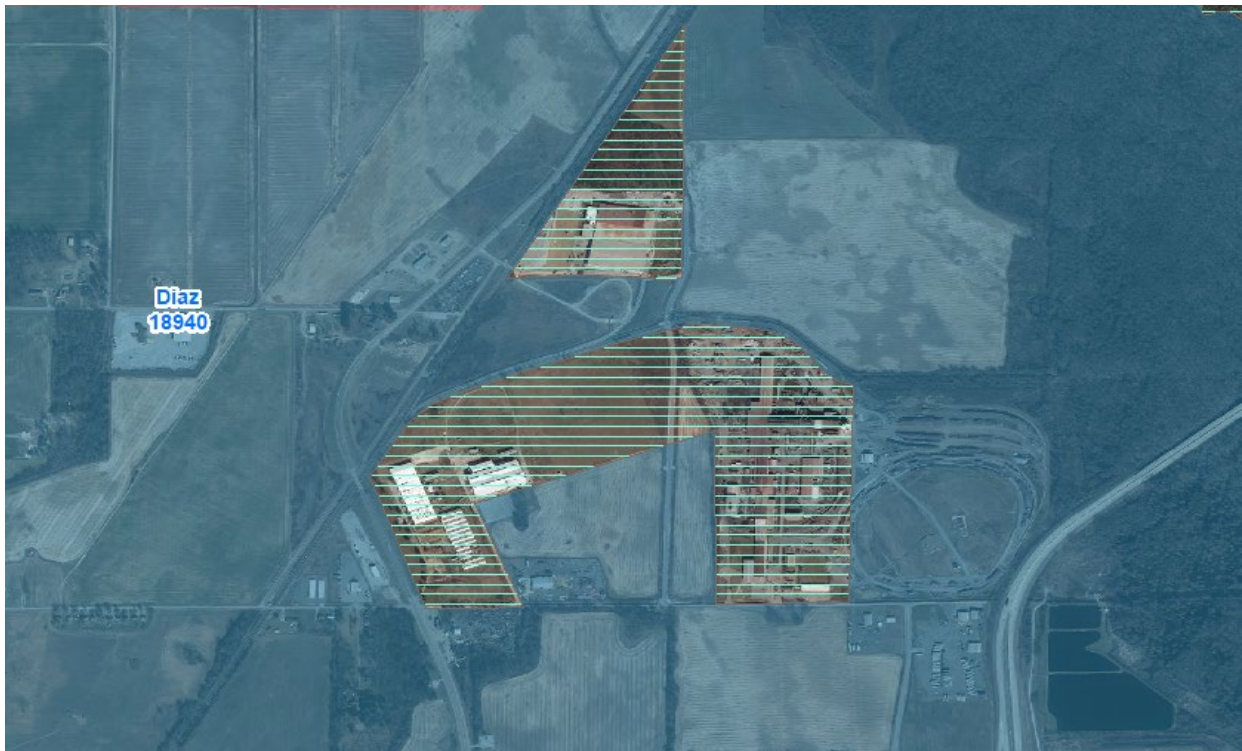
Ms Wheeler:

This annexation did not complete. Also, we have a different Mayor at this time. Mr. Perry Stegall
If you have any further questions please feel free to contact this office.

Thank You]
Kathy Howard
Recorder Treasurer
City of Diaz
870-523-8559

From: Jennifer Wheeler [mailto:Jennifer.Wheeler@arkansas.gov]
Sent: Wednesday, February 3, 2021 2:24 PM
To: cityofdiaz@suddenlinkmail.com
Subject: FW: Diaz Enclave Annexation - Map Coordination

Thank you for taking my call earlier. I am reaching out to confirm that this enclave annexation did not complete. We report our boundaries to the Census and they are showing this spot to be inside the city limits so we need to ask them to make a correction to their map. Can you please confirm that this is outside the city? Thank you!



Jennifer Wheeler
Senior GIS Analyst
Transformation and Shared Services, Geographic Information Systems
o. 501.682.2929 | m. 501.454.9524
jennifer.wheeler@arkansas.gov
<https://gis.arkansas.gov/>

EPIC Service

Promoting efficient development, maintenance, and distribution of Arkansas' geographic information resources.

From: Shelby Johnson <shelby.johnson@arkansas.gov>
Sent: Monday, June 26, 2017 9:38 AM
To: 'cityofdiaz@suddenlinkmail.com' <cityofdiaz@suddenlinkmail.com>
Cc: Jennifer Wheeler <Jennifer.Wheeler@arkansas.gov>
Subject: Diaz Enclave Annexation - Map Coordination

Mayor Davis,

Please see attached annexation coordination letter and map. Please let me know if you need additional information or have any questions.

Shelby D Johnson - Geographic Information Officer

Arkansas GIS Office
1 Capitol Mall Ste 6D
Little Rock, AR 72201
501.682.2943 Tel
501.407.0790 Fax
shelby.johnson@arkansas.gov Email
<http://www.gis.arkansas.gov> Web

Promoting efficient development, maintenance, and distribution of Arkansas' geographic information resources.