



Commercial Real Estate Services Since 1972

FILED
2006 MAR 27 PM 2:06

CLERK
CRANTON COUNTY, AR

EE 2006-51

To Whom It May Concern:

This letter is to request the property listed in the attached legal description, be annexed into the City of Alma, Arkansas. This property is directly West of the Wal-Mart Super Center off of Highway 64. Please let me know if you need anything else.

Thanks and have a great day.

Paul

PS/sb

A-15 292

A-15 274

TAPP Development Corporation

450 S. Coltrane • Edmond, Oklahoma 73034 • 405/752-7522 • Fax 405/749-9924
Visit our Web Site at <http://www.tappdevelopment.com>

2006 MAR 27 PM 2:06

FILED
STATE OF ARKANSAS
COUNTY OF CRAWFORD

COUNTY OF CRAWFORD, STATE OF ARKANSAS:

PART OF THE SE/4 OF THE SW/4 AND PART OF THE SW/4 OF THE SE/4 OF SECTION 6, AND PART OF THE NE/4 OF THE NW/4 AND PART OF THE NW/4 OF THE NE/4 OF SECTION 7, ALL IN TOWNSHIP 9 NORTH, RANGE 30 WEST, CRAWFORD COUNTY, ARKANSAS, AND BEING MORE PARTICULARLY DESCRIBED AS FOLLOWS: COMMENCING AT THE NE CORNER OF THE SE/4 OF THE SW/4 OF SAID SECTION 6, SAID POINT BEING A FOUND 1 1/2" PIPE, THENCE SOUTH 06 DEGREES 02 MINUTES 36 SECONDS EAST 37.49 FEET TO A FOUND RAILROAD SPIKE, THENCE SOUTH 01 DEGREES 32 MINUTES 36 SECONDS EAST 181.50 FEET, THENCE SOUTH 00 DEGREES 39 MINUTES 01 SECONDS WEST 54.42 FEET TO THE POINT OF BEGINNING, SAID POINT BEING A FOUND 1 1/2" REBAR AND ON THE SOUTH RIGHT OF WAY LINE OF WEST CHERRY STREET (HWY 64B) AND THENCE LEAVING SAID SOUTH RIGHT OF WAY LINE SOUTH 10 DEGREES 22 MINUTES 53 SECONDS WEST 64.15 FEET, THENCE SOUTH 01 DEGREES 22 MINUTES 24 SECONDS EAST 112.08 FEET, THENCE SOUTH 00 DEGREES 25 MINUTES 42 SECONDS WEST 168.52 FEET, THENCE SOUTH 26 DEGREES 14 MINUTES 40 SECONDS EAST 221.42 FEET, THENCE SOUTH 14 DEGREES 57 MINUTES 50 SECONDS WEST 92.66 FEET, THENCE SOUTH 31 DEGREES 59 MINUTES 32 SECONDS EAST 75.00 FEET, THENCE SOUTH 65 DEGREES 39 MINUTES 02 SECONDS EAST 63.75 FEET, THENCE SOUTH 26 DEGREES 14 MINUTES 40 SECONDS EAST 143.85 FEET, THENCE SOUTH 71 DEGREES 14 MINUTES 50 SECONDS EAST 49.50 FEET, THENCE NORTH 63 DEGREES 45 MINUTES 00 SECONDS EAST 568.58 FEET, THENCE NORTH 17 DEGREES 30 MINUTES 58 SECONDS EAST 51.02 FEET, THENCE NORTH 27 DEGREES 11 MINUTES 37 SECONDS WEST 492.79 FEET, THENCE NORTH 88 DEGREES 53 MINUTES 24 SECONDS EAST 89.12 FEET, THENCE SOUTH 35 DEGREES 13 MINUTES 07 SECONDS WEST 8.07 FEET, THENCE SOUTH 42 DEGREES 18 MINUTES 16 SECONDS EAST 110.73 FEET, THENCE SOUTH 41 DEGREES 23 MINUTES 59 SECONDS EAST 226.10 FEET, THENCE SOUTH 84 DEGREES 20 MINUTES 59 SECONDS EAST 11.91 FEET, THENCE NORTH 00 DEGREES 05 MINUTES 41 SECONDS WEST 73.16 FEET, THENCE SOUTH 82 DEGREES 45 MINUTES 31 SECONDS EAST 101.38 FEET, THENCE SOUTH 07 DEGREES 14 MINUTES 15 SECONDS EAST 18.17 FEET, THENCE SOUTH 88 DEGREES 08 MINUTES 42 SECONDS EAST 120.35 FEET, THENCE SOUTH 03 DEGREES 49 MINUTES 13 SECONDS WEST 26.36 FEET, THENCE NORTH 82 DEGREES 56 MINUTES 41 SECONDS EAST 9.32 FEET, THENCE SOUTH 24 DEGREES 19 MINUTES 41 SECONDS EAST 412.12 FEET TO THE NORTHERLY RIGHT OF WAY LINE OF THE UNION-PACIFIC RAILROAD, THENCE ALONG SAID NORTHERLY RIGHT-OF-WAY LINE SOUTH 71 DEGREES 10 MINUTES 07 SECONDS WEST 2094.15 FEET, THENCE LEAVING SAID NORTHERLY RIGHT-OF-WAY LINE AND ALONG THE CENTERLINE OF BRANCH OF FROG BAYOU TRIBUTARY NORTH 30



2006 MAR 27 PM 2:07

DEGREES 34 MINUTES 05 SECONDS WEST 352.28 FEET, THENCE CONTINUING ALONG SAID CENTERLINE NORTH 28 DEGREES 29 MINUTES 12 SECONDS WEST 437.14 FEET, THENCE NORTH 25 DEGREES 43 MINUTES 26 SECONDS WEST 358.98 FEET TO THE SOUTHERLY RIGHT-OF-WAY LINE OF U.S. HIGHWAY 64-71, THENCE ALONG SAID SOUTHERLY RIGHT-OF-WAY LINE AND LEAVING SAID CENTERLINE NORTH 61 DEGREES 58 MINUTES 43 SECONDS EAST 866.58 FEET TO THE SOUTH RIGHT-OF-WAY LINE OF WEST CHERRY STREET (HWY 64B), THENCE ALONG SAID SOUTH RIGHT-OF-WAY LINE AND LEAVING THE SOUTHERLY RIGHT-OF-WAY LINE OF U.S. HWY 64-71 NORTH 89 DEGREES 17 MINUTES 20 SECONDS EAST 466.94 FEET TO THE POINT OF BEGINNING, CONTAINING 1,760,913.68 SQUARE FEET OF 40.4250 ACRES MORE OR LESS, AND SUBJECT TO ALL RIGHTS-OF-WAY, EASEMENTS AND RESTRICTIVE COVENANTS OF RECORD OR FACT. ACCORDING TO A SURVEY BY FREELAND-KAUFFMAN & FREDEEN, INC., DATED 4/4/2005, JOB NO. 2005-130.

LESS AND EXCEPT: PART OF THE SOUTHWEST QUARTER OF THE SOUTHEAST QUARTER OF SECTION 6, TOWNSHIP 9 NORTH, RANGE 30 WEST AND ALSO PART OF BLOCKS 2 AND 3 OF REEVES ADDITION TO THE CITY OF ALMA, CRAWFORD COUNTY, ARKANSAS BEING MORE PARTICULARLY DESCRIBED AS FOLLOWS: COMMENCING AT AN EXISTING RAILROAD SPIKE ON THE NORTHWEST CORNER OF THE SOUTHWEST QUARTER OF THE SOUTHEAST QUARTER. THENCE ALONG THE NORTH LINE OF SAID FORTY, SOUTH 89 DEGREES 54 MINUTES 39 SECONDS EAST, 901.58 FEET. THENCE LEAVING SAID NORTH LINE, SOUTH 00 DEGREES 30 MINUTES 07 SECONDS WEST, 591.39 FEET TO A SET REBAR AND FENCE CORNER AND THE POINT OF BEGINNING. THENCE ALONG AN EXISTING FENCE LINE THE FOLLOWING BEARINGS AND DISTANCES: SOUTH 82 DEGREES 14 MINUTES 38 SECONDS EAST, 101.28 FEET TO A SET REBAR AND FENCE CORNER. SOUTH 07 DEGREES 15 MINUTES 49 SECONDS EAST, 18.12 FEET TO A SET REBAR AND FENCE CORNER. SOUTH 87 DEGREES 21 MINUTES 21 SECONDS EAST, 120.38 FEET TO A SET REBAR. SOUTH 04 DEGREES 21 MINUTES 21 SECONDS WEST, 26.33 FEET TO A SET REBAR. NORTH 84 DEGREES 08 MINUTES 51 SECONDS EAST, 9.32 FEET TO A SET REBAR. SOUTH 23 DEGREES 50 MINUTES 26 SECONDS EAST, 412.12 FEET TO THE NORTH RIGHT OF WAY LINE OF MISSOURI PACIFIC RAILROAD TRACKS. THENCE ALONG SAID RIGHT OF WAY LINE, SOUTH 71 DEGREES 41 MINUTES 41 SECONDS WEST, 423.19 FEET TO A SET REBAR. THENCE ALONG AN EXISTING FENCE LINE, NORTH 00 DEGREES 30 MINUTES 07 SECONDS EAST, 571.77 FEET TO THE POINT OF BEGINNING, CONTAINING 3.55 ACRES AND SUBJECT TO EASEMENTS OF RECORD. ACCORDING TO A SURVEY BY SATTERFIELD LAND SURVEYORS.

GRANTORS HEREIN RESERVE ALL OIL, GAS AND MINERAL RIGHTS, BUT NO RIGHTS TO THE SURFACE.

A-15 276

CC- 15 294

FT. SMITH HOLDINGS, LLC
450 S. COLTRANE
EDMOND, OK 73034

ROSE ROCK BANK
39-1306/1030

1035

3/24/2006

PAY TO THE ORDER OF CRAWFORD COUNTY

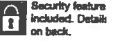
**30.00

Thirty and 00/100*****

\$

DOLLARS

CRAWFORD COUNTY CLERK
300 MAIN STREET, ROOM 4
ALMA, AR 72956



ATTN: JAMIE CRUZ/ RECORDING FEE

AUTHORIZED SIGNATURE

MEMO

⑈001035⑈ ⑆103013062⑆

⑈1755231285⑈

FT. SMITH HOLDINGS, LLC
CRAWFORD COUNTY

3/24/2006

1035

30.00

CASH IN BANK

ATTN: JAMIE CRUZ/ RECORDING FEE

30.00

CC-15 295

A-15 277

Jerry H. Williams

COUNTY JUDGE
CRAWFORD COUNTY COURTHOUSE
300 MAIN STREET - ROOM 4
VAN BUREN, ARKANSAS 72956-5798

FILED

2006 MAR 27 PM 2:06

CLERK OF THE COURT
CRAWFORD COUNTY ARKANSAS

March 16, 2006

Mr. Paul Swales
450 S. Coltrane
Edmond, Oklahoma 73034

CC-2006-51

Dear Mr. Swales:

Today we received your request that your property be released from the county for annexation to the City of Alma. As County Judge of Crawford County, I hereby release the property with the understanding that all the pertinent paperwork be completed by you and filed according to county procedures. Copies of all paperwork should be filed with the County Clerk's office and a file marked copy should be given to the County Judge's office.

As we discussed this morning, we will need proof of publication in local newspaper also.

The hearing date has been set for April 13, 2006 at 2:00 p.m. in the Crawford County Judge's office.

Thank you for your attention to this matter.

Sincerely,

Jerry Williams
Jerry Williams
Crawford County Judge

JW/jc



A-15 278

CC-15 296

1
ce 2006-159002-51

Jerry H. Williams

COUNTY JUDGE
CRAWFORD COUNTY COURTHOUSE
300 MAIN STREET - ROOM 4
VAN BUREN, ARKANSAS 72956-5798

My Copy
attach Copy of
Check
attach Plat of Map

March 16, 2006

Mr. Paul Swales
450 S. Coltrane
Edmond, Oklahoma 73034

Dear Mr. Swales:

Today we received your request that your property be released from the county for annexation to the City of Alma. As County Judge of Crawford County, I hereby release the property with the understanding that all the pertinent paperwork be completed by you and filed according to county procedures. Copies of all paperwork should be filed with the County Clerk's office and a file marked copy should be given to the County Judge's office.

As we discussed this morning, we will need proof of publication in local newspaper also.

The hearing date has been set for April ²⁷~~13~~, 2006 at 2:00 p.m. in the Crawford County Judge's office.

Thank you for your attention to this matter.

Sincerely,

Jerry Williams
Crawford County Judge

JW/jc

2006 MAR 27 PM 2:07
CRAWFORD COUNTY CLERK
CRAWFORD COUNTY, AR

FILED



A-15 280

Press Argus-Courier

P.O. Box 369

Van Buren, Arkansas 72957

(501) 474-5215

FILED

PROOF OF PUBLICATION

2006 AUG. 21 PM 1:59

State of Arkansas, } ss.
County of Crawford }

PATTI HILL
COUNTY & PROBATE CLERK
CRAWFORD COUNTY, AR

I, Bill Hager, Publisher of the Press Argus-Courier, a newspaper published in said County and State, and having general circulation therein, hereby certify that the annexed advertisement was published in said paper

three time(s) with the first publication being on the 13th day of May, 2006, and the last publication being on the 27th day of May, 2006.

Publisher's Fee \$ 43.01 Kim Nattaway Publisher

Subscribed and sworn to before me this 8th day of June, 2006

My Commission expires April 10, 2016

Jawana D. Wright
Notary Public



REQUEST FOR ANNEXATION-SUBJECT PROPERTY IS APPROXIMATELY 36 ACRES DIRECTLY WEST OF THE NEW WAL-MART SUPER CENTER LOCATED OFF HIGHWAY 64 IN ALMA. HEARING TO BE HELD FRIDAY, JUNE 2, 2006 AT 2:00 PM. PARCEL NO. 00101690000: SECTION 6, TOWNSHIP 9, RANGE 30. PARCEL NO. 00101704002: SECTION 7, TOWNSHIP 9, RANGE 30. IF MORE INFORMATION IS NEEDED DESCRIBING THE LOCATION OF THE PROPERTY PLEASE CALL PAUL SWALES AT (501) 474-5215.

FILED

2006 AUG 21 PM 2:13

IN THE CRAWFORD COUNTY COURT

IN THE MATTER OF ANNEXING TO THE
CITY OF POBBATE, ARKANSAS CERTAIN
CRAWFORD COUNTY, ARKANSAS
TERRITORY ADJACENT AND CONTIGUOUS

CASE NO. CC-2006-51

ORDER OF ANNEXATION

On this 2nd day of June, 2006, at 2:00 o'clock P.M., a public hearing was held, notice of hearing was duly published in the Press Argus-Courier Newspaper as provided by law, no one having appeared to object, the Petition of Ft. Smith Holdings, L.L.C. was approved and the County Court hereby orders that the following described property:

THE FOLLOWING LANDS, LYING IN THE COUNTY OF CRAWFORD, STATE OF ARKANSAS:

PART OF THE SE/4 OF THE SW/4 AND PART OF THE SW/4 OF THE SE/4 OF SECTION 6, AND PART OF THE NE/4 OF THE NW/4 AND PART OF THE NW/4 OF THE NE/4 OF SECTION 7, ALL IN TOWNSHIP 9 NORTH, RANGE 30 WEST, CRAWFORD COUNTY, ARKANSAS, AND BEING MORE PARTICULARLY DESCRIBED AS FOLLOWS: COMMENCING AT THE NE CORNER OF THE SE/4 OF THE SW/4 OF SAID SECTION 6, SAID POINT BEING A FOUND 1 1/2" PIPE, THENCE SOUTH 06 DEGREES 02 MINUTES 36 SECONDS EAST 37.49 FEET TO A FOUND RAILROAD SPIKE, THENCE SOUTH 01 DEGREES 32 MINUTES 36 SECONDS EAST 181.50 FEET, THENCE SOUTH 00 DEGREES 39 MINUTES 01 SECONDS WEST 54.42 FEET TO THE POINT OF BEGINNING, SAID POINT BEING A FOUND 1/2" REBAR AND ON THE SOUTH RIGHT OF WAY LINE OF WEST CHERRY STREET (HWY 64B), THENCE LEAVING SAID SOUTH RIGHT OF WAY LINE SOUTH 10 DEGREES 22 MINUTES 53 SECONDS WEST 64.15 FEET, THENCE SOUTH 01 DEGREES 25 MINUTES 24 SECONDS EAST 112.08 FEET, THENCE SOUTH 00 DEGREES 12 MINUTES 42 SECONDS WEST 168.52 FEET, THENCE SOUTH 26 DEGREES 14 MINUTES 40 SECONDS EAST 221.42 FEET, THENCE SOUTH 14 DEGREES 57 MINUTES 50 SECONDS WEST 92.66 FEET, THENCE SOUTH 31 DEGREES 59 MINUTES 32 SECONDS EAST 75.00 FEET, THENCE SOUTH 65 DEGREES 39 MINUTES 02 SECONDS EAST 63.75 FEET, THENCE SOUTH 26 DEGREES 14 MINUTES 40 SECONDS EAST 143.85 FEET, THENCE SOUTH 71 DEGREES 14 MINUTES 50 SECONDS EAST 49.50 FEET, THENCE NORTH 63 DEGREES 45 MINUTES 00 SECONDS EAST 568.58 FEET, THENCE NORTH 17 DEGREES 30 MINUTES 58 SECONDS EAST 51.02 FEET, THENCE NORTH 27 DEGREES 11 MINUTES 37 SECONDS WEST 492.79 FEET, THENCE NORTH 88 DEGREES 53 MINUTES 28 SECONDS EAST 89.12 FEET, THENCE SOUTH 35 DEGREES 13 MINUTES 24 SECONDS WEST 8.07 FEET, THENCE SOUTH 42 DEGREES 18 MINUTES 16 SECONDS EAST 110.73 FEET, THENCE SOUTH 41 DEGREES 23 MINUTES 59 SECONDS EAST 226.10 FEET, THENCE SOUTH 84 DEGREES 20 MINUTES 59 SECONDS EAST 11.91 FEET, THENCE NORTH 00 DEGREES 05 MINUTES 41 SECONDS WEST 73.16 FEET, THENCE SOUTH 82 DEGREES 45 MINUTES 31 SECONDS EAST 101.38 FEET, THENCE SOUTH 07 DEGREES 14 MINUTES 15 SECONDS EAST 18.17 FEET, THENCE SOUTH 88 DEGREES 08 MINUTES 42 SECONDS EAST 120.35 FEET, THENCE SOUTH 03 DEGREES 49 MINUTES 13 SECONDS WEST 26.36 FEET, THENCE NORTH 82 DEGREES 56 MINUTES 11 SECONDS EAST 9.32 FEET, THENCE SOUTH 24 DEGREES 19 MINUTES 41 SECONDS EAST 412.12 FEET TO THE NORTHERLY RIGHT OF WAY LINE OF THE UNION-PACIFIC RAILROAD, THENCE ALONG SAID NORTHERLY RIGHT-OF-WAY LINE SOUTH 71 DEGREES 10 MINUTES 07 SECONDS WEST 2094.15 FEET, THENCE LEAVING SAID NORTHERLY RIGHT-OF-WAY LINE AND ALONG THE CENTERLINE OF BRANCH OF FROG BAYOU TRIBUTARY NORTH 30 DEGREES 34 MINUTES 05 SECONDS WEST 352.28 FEET, THENCE CONTINUING ALONG SAID CENTERLINE NORTH 28 DEGREES 29 MINUTES 12 SECONDS WEST 437.14 FEET, THENCE NORTH 25 DEGREES 43 MINUTES 26 SECONDS WEST 358.98 FEET TO THE SOUTHERLY RIGHT-OF-WAY LINE OF U.S. HIGHWAY 64-71, THENCE ALONG SAID SOUTHERLY RIGHT-OF-WAY LINE AND LEAVING SAID CENTERLINE NORTH 61 DEGREES 58 MINUTES 43 SECONDS EAST 866.58 FEET TO THE SOUTH RIGHT-OF-WAY LINE OF WEST CHERRY STREET (HWY 64B), THENCE ALONG SAID SOUTH RIGHT-

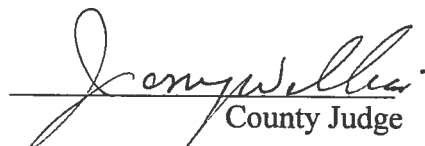
OF-WAY LINE AND LEAVING THE SOUTHERLY RIGHT-OF-WAY LINE OF U.S. HWY 64-71 NORTH 89 DEGREES 17 MINUTES 20 SECONDS EAST 466.94 FEET TO THE POINT OF BEGINNING, CONTAINING 1,760,913.68 SQUARE FEET OF 40.4250 ACRES MORE OR LESS, AND SUBJECT TO ALL RIGHTS-OF-WAY, EASEMENTS AND RESTRICTIVE COVENANTS OF RECORD OR FACT. ACCORDING TO A SURVEY BY FREELAND-KAUFFMAN & FREDEEN, INC., DATED 4/4/2005, JOB NO. 2005-130.

LESS AND EXCEPT: PART OF THE SOUTHWEST QUARTER OF THE SOUTHEAST QUARTER OF SECTION 6, TOWNSHIP 9 NORTH, RANGE 30 WEST AND ALSO PART OF BLOCKS 2 AND 3 OF REEVES ADDITION TO THE CITY OF ALMA, CRAWFORD COUNTY, ARKANSAS BEING MORE PARTICULARLY DESCRIBED AS FOLLOWS:

COMMENCING AT AN EXISTING RAILROAD SPIKE ON THE NORTHWEST CORNER OF THE SOUTHWEST QUARTER OF THE SOUTHEAST QUARTER. THENCE ALONG THE NORTH LINE OF SAID FORTY, SOUTH 89 DEGREES 54 MINUTES 39 SECONDS EAST, 901.58 FEET. THENCE LEAVING SAID NORTH LINE, SOUTH 00 DEGREES 30 MINUTES 07 SECONDS WEST, 591.39 FEET TO A SET REBAR AND FENCE CORNER AND THE POINT OF BEGINNING. THENCE ALONG AN EXISTING FENCE LINE THE FOLLOWING BEARINGS AND DISTANCES: SOUTH 82 DEGREES 14 MINUTES 38 SECONDS EAST, 101.28 FEET TO A SET REBAR AND FENCE CORNER. SOUTH 07 DEGREES 15 MINUTES 49 SECONDS EAST, 18.12 FEET TO A SET REBAR AND FENCE CORNER. SOUTH 87 DEGREES 38 MINUTES 58 SECONDS EAST, 120.38 FEET TO A SET REBAR. SOUTH 04 DEGREES 21 MINUTES 21 SECONDS WEST, 26.33 FEET TO A SET REBAR. NORTH 84 DEGREES 08 MINUTES 51 SECONDS EAST, 9.32 FEET TO A SET REBAR. SOUTH 23 DEGREES 50 MINUTES 26 SECONDS EAST, 412.12 FEET TO THE NORTH RIGHT OF WAY LINE OF MISSOURI PACIFIC RAILROAD TRACKS. THENCE ALONG SAID RIGHT OF WAY LINE, SOUTH 71 DEGREES 41 MINUTES 41 SECONDS WEST, 423.19 FEET TO A SET REBAR. THENCE ALONG AN EXISTING FENCE LINE, NORTH 00 DEGREES 30 MINUTES 07 SECONDS EAST, 571.77 FEET TO THE POINT OF BEGINNING, CONTAINING 3.55 ACRES AND SUBJECT TO EASEMENTS OF RECORD. ACCORDING TO A SURVEY BY SATTERFIELD LAND SURVEYORS.

be annexed to the City of Alma, Arkansas.

IT IS THEREFORE, CONSIDERED, ORDERED, AND DECREED that said lands be annexed to the City of Alma, Arkansas.


County Judge

Attest


Patti Hill, County Clerk

CC-2006-51

FILED

CERTIFICATION

2006 OCT 23 PM 3:11
CITY CLERK
CRAWFORD COUNTY, AR

I, Jennifer Moon, City Clerk for the City of Alma, Arkansas do hereby certify that this is true and correct copy of Ordinance 2006-13 passed at the Regular Session of the Alma City Council meeting held on October 19, 2006 at the Alma Municipal Complex.

Jennifer Moon
Jennifer Moon, City Clerk
City of Alma

CC-2006-51

ORDINANCE NO. 2006-13

FILED
OCT 25 PM 3:11

AN ORDINANCE ANNEXING CERTAIN TERRITORY AND ESTABLISHING THE ZONING THEREOF.

WHEREAS, the property described in Exhibit "A" attached hereto and incorporated herein by reference is contiguous to the city limits of the City of Alma, Arkansas, and,

WHEREAS, said annexation is in the best interest of the City of Alma, Arkansas, and,

WHEREAS, all improvements on this property have either been completed in accordance or will be completed in accordance with all guidelines established by the City of Alma, Arkansas, and,

WHEREAS, the Crawford County Court has authorized said annexation:

NOW, THEREFORE, BE IT ORDAINED BY THE CITY COUNCIL OF THE CITY OF ALMA, ARKANSAS:

That the property described as Exhibit "A" be annexed to the City of Alma, Arkansas, and the same be zoned C-2.

That Ordinance 2006-10 is hereby repealed.

THAT, in order to ensure the orderly growth of the City of Alma, Arkansas, and in order to provide city services for said lands and for all other reasons, the immediate passage of this ordinance is necessary in order to preserve the public peace, health, welfare and safety and the same take effect and be in full force from and after its passage.

Passed this 19th day of October, 2006.

APPROVED: John R. Ballentine
John R. Ballentine, Mayor

ATTEST: Jennifer Moon
Jennifer Moon, City Clerk

THE FOLLOWING LANDS, LYING IN THE COUNTY OF CRAWFORD, STATE OF ARKANSAS:

PART OF THE SE/4 OF THE SW/4 AND PART OF THE SW/4 OF THE SE/4 OF SECTION 6, AND PART OF THE NE/4 OF THE NW/4 AND PART OF THE NW/4 OF THE NE/4 OF SECTION 7, ALL IN TOWNSHIP 9 NORTH, RANGE 30 WEST, CRAWFORD COUNTY, ARKANSAS, AND BEING MORE PARTICULARLY DESCRIBED AS FOLLOWS: COMMENCING AT THE NE CORNER OF THE SE/4 OF THE SW/4 OF SAID SECTION 6, SAID POINT BEING A FOUND 1 1/2" PIPE, THENCE SOUTH 06 DEGREES 02 MINUTES 36 SECONDS EAST 37.49 FEET TO A FOUND RAILROAD SPIKE, THENCE SOUTH 01 DEGREES 32 MINUTES 36 SECONDS EAST 181.50 FEET, THENCE SOUTH 00 DEGREES 39 MINUTES 01 SECONDS WEST 54.42 FEET TO THE POINT OF BEGINNING, SAID POINT BEING A FOUND 1/2" REBAR AND ON THE SOUTH RIGHT OF WAY LINE OF WEST CHERRY STREET (HWY 64B), THENCE LEAVING SAID SOUTH RIGHT OF WAY LINE SOUTH 10 DEGREES 22 MINUTES 53 SECONDS WEST 64.15 FEET, THENCE SOUTH 01 DEGREES 25 MINUTES 24 SECONDS EAST 112.08 FEET, THENCE SOUTH 00 DEGREES 12 MINUTES 42 SECONDS WEST 168.52 FEET, THENCE SOUTH 26 DEGREES 14 MINUTES 40 SECONDS EAST 221.42 FEET, THENCE SOUTH 14 DEGREES 57 MINUTES 50 SECONDS WEST 92.66 FEET, THENCE SOUTH 31 DEGREES 59 MINUTES 32 SECONDS EAST 75.00 FEET, THENCE SOUTH 65 DEGREES 39 MINUTES 02 SECONDS EAST 63.75 FEET, THENCE SOUTH 26 DEGREES 14 MINUTES 40 SECONDS EAST 143.85 FEET, THENCE SOUTH 71 DEGREES 14 MINUTES 50 SECONDS EAST 49.50 FEET, THENCE NORTH 63 DEGREES 45 MINUTES 00 SECONDS EAST 568.58 FEET, THENCE NORTH 17 DEGREES 30 MINUTES 58 SECONDS EAST 51.02 FEET, THENCE NORTH 27 DEGREES 11 MINUTES 37 SECONDS WEST 492.79 FEET, THENCE NORTH 88 DEGREES 53 MINUTES 28 SECONDS EAST 89.12 FEET, THENCE SOUTH 35 DEGREES 13 MINUTES 24 SECONDS WEST 8.07 FEET, THENCE SOUTH 42 DEGREES 18 MINUTES 16 SECONDS EAST 110.73 FEET, THENCE SOUTH 41 DEGREES 23 MINUTES 59 SECONDS EAST 226.10 FEET, THENCE SOUTH 84 DEGREES 20 MINUTES 59 SECONDS EAST 11.91 FEET, THENCE NORTH 00 DEGREES 05 MINUTES 41 SECONDS WEST 73.16 FEET, THENCE SOUTH 82 DEGREES 45 MINUTES 31 SECONDS EAST 101.38 FEET, THENCE SOUTH 07 DEGREES 14 MINUTES 15 SECONDS EAST 18.17 FEET, THENCE SOUTH 88 DEGREES 08 MINUTES 42 SECONDS EAST 120.35 FEET, THENCE SOUTH 03 DEGREES 49 MINUTES 13 SECONDS WEST 26.36 FEET, THENCE NORTH 82 DEGREES 56 MINUTES 11 SECONDS EAST 9.32 FEET, THENCE SOUTH 24 DEGREES 19 MINUTES 41 SECONDS EAST 412.12 FEET TO THE NORTHERLY RIGHT OF WAY LINE OF THE UNION-PACIFIC RAILROAD, THENCE ALONG SAID NORTHERLY RIGHT-OF-WAY LINE SOUTH 71 DEGREES 10 MINUTES 07 SECONDS WEST 2094.15 FEET, THENCE LEAVING SAID NORTHERLY RIGHT-OF-WAY LINE AND ALONG THE CENTERLINE OF BRANCH OF FROG BAYOU TRIBUTARY NORTH 30 DEGREES 34 MINUTES 05 SECONDS WEST 352.28 FEET, THENCE CONTINUING ALONG SAID CENTERLINE NORTH 28 DEGREES 29 MINUTES 12 SECONDS WEST 437.14 FEET, THENCE NORTH 25 DEGREES 43 MINUTES 26 SECONDS WEST 358.98 FEET TO THE SOUTHERLY RIGHT-OF-WAY LINE OF U.S. HIGHWAY 64-71, THENCE ALONG SAID SOUTHERLY RIGHT-OF-WAY LINE AND LEAVING SAID CENTERLINE NORTH 61 DEGREES 58 MINUTES 43 SECONDS EAST 866.58 FEET TO THE SOUTH RIGHT-OF-WAY LINE OF WEST CHERRY STREET (HWY 64B), THENCE ALONG SAID SOUTH RIGHT-OF-WAY LINE AND LEAVING THE SOUTHERLY RIGHT-OF-WAY LINE OF U.S. HWY 64-71 NORTH 89 DEGREES 17 MINUTES 20 SECONDS EAST 466.94 FEET TO THE POINT OF BEGINNING, CONTAINING 1,760,913.68 SQUARE FEET OF 40.4250 ACRES MORE OR LESS, AND SUBJECT TO ALL RIGHTS-OF-WAY, EASEMENTS AND RESTRICTIVE COVENANTS OF RECORD OR FACT. ACCORDING TO A SURVEY BY FREELAND-KAUFFMAN & FREDEEN, INC., DATED 4/4/2005, JOB NO. 2005-130.

LESS AND EXCEPT: PART OF THE SOUTHWEST QUARTER OF THE SOUTHEAST QUARTER OF SECTION 6, TOWNSHIP 9 NORTH, RANGE 30 WEST AND ALSO PART OF BLOCKS 2 AND 3 OF REEVES ADDITION TO THE CITY OF ALMA, CRAWFORD COUNTY, ARKANSAS BEING MORE PARTICULARLY DESCRIBED AS FOLLOWS:

COMMENCING AT AN EXISTING RAILROAD SPIKE ON THE NORTHWEST CORNER OF THE SOUTHWEST QUARTER OF THE SOUTHEAST QUARTER. THENCE ALONG THE NORTH LINE OF SAID FORTY, SOUTH 89 DEGREES 54 MINUTES 39 SECONDS EAST, 901.58 FEET. THENCE LEAVING SAID NORTH LINE, SOUTH 00 DEGREES 30 MINUTES 07 SECONDS WEST, 591.39 FEET TO A SET REBAR AND FENCE CORNER AND THE POINT OF BEGINNING. THENCE ALONG AN EXISTING FENCE LINE THE FOLLOWING BEARINGS AND DISTANCES: SOUTH 82 DEGREES 14 MINUTES 38 SECONDS EAST, 101.28 FEET TO A SET REBAR AND FENCE CORNER. SOUTH 07 DEGREES 15 MINUTES 49 SECONDS EAST, 18.12 FEET TO A SET REBAR AND FENCE CORNER. SOUTH 87 DEGREES 38 MINUTES 58 SECONDS EAST, 120.38 FEET TO A SET REBAR. SOUTH 04 DEGREES 21 MINUTES 21 SECONDS WEST, 26.33 FEET TO A SET REBAR. NORTH 84 DEGREES 08 MINUTES 51 SECONDS EAST, 9.32 FEET TO A SET REBAR. SOUTH 23 DEGREES 50 MINUTES 26 SECONDS EAST, 412.12 FEET TO THE NORTH RIGHT OF WAY LINE OF MISSOURI PACIFIC RAILROAD TRACKS. THENCE ALONG SAID RIGHT OF WAY LINE, SOUTH 71 DEGREES 41 MINUTES 41 SECONDS WEST, 423.19 FEET TO A SET REBAR. THENCE ALONG AN EXISTING FENCE LINE, NORTH 00 DEGREES 30 MINUTES 07 SECONDS EAST, 571.77 FEET TO THE POINT OF BEGINNING, CONTAINING 3.55 ACRES AND SUBJECT TO EASEMENTS OF RECORD. ACCORDING TO A SURVEY BY SATTERFIELD LAND SURVEYORS.



State of Arkansas Secretary of State

FILED

2006 OCT 31 AM 9:18

FILED
COUNTY CLERK
CRAWFORD COUNTY, AR

Business & Commercial Services	682-3409
Elections	682-5070
Building & Grounds	682-3407
Communications & Education	683-0057
State Capitol Police	682-5173
Business Office	682-8032
Information Technology	682-3411

Charlie Daniels
Secretary of State

October 27, 2006

The Honorable Patti Hill
Crawford County Clerk
300 Main Street, Room 7
Van Buren, AR 72956

Dear Ms. Hill:

The Following Information has been recorded and filed in the Office of the Secretary of State:

Date: 10/24/2006 **County:** Crawford **City:** Alma

Annexation: Ordinance No. - 2006-13
Co. Order No - 2006-51
Plat - X--Ft. Smith Holdings, LLC Annexation
Election -
Island -

Incorporation: Ordinance No. -
Co. Order No. -
Plat -
Election -

Census Information: The following City or Town has been upgraded or reduced to:
1st Class -
2nd Class City -
Incorporated Town -

I have forwarded this information to the Arkansas Municipal League and the Arkansas Highway and Transportation Department. If you have any further questions please do not hesitate to contact me at 1-800-482-1127 or 682-3451

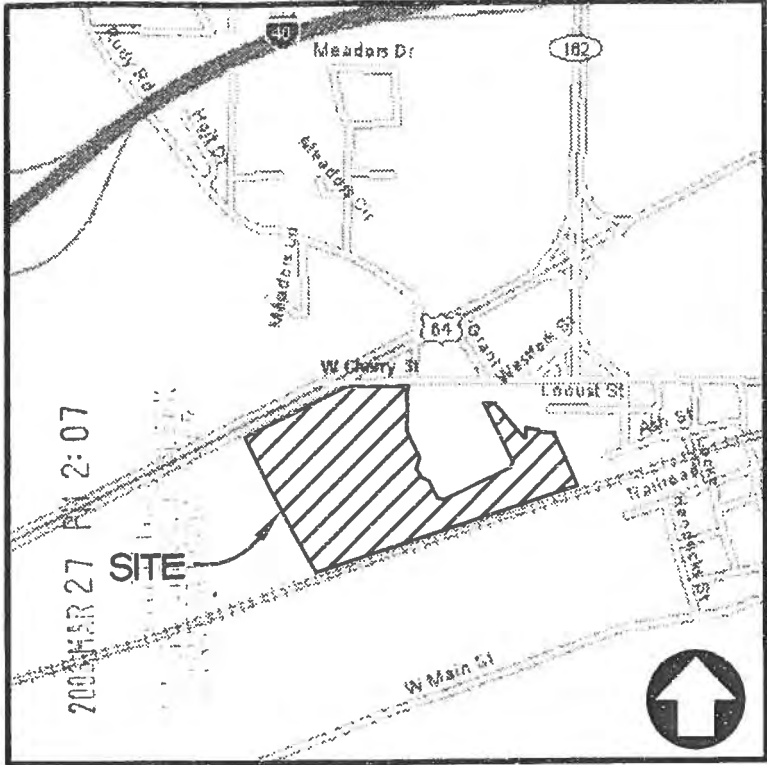
Sincerely,

Tena Arnold
Election Services Representative
Arkansas Secretary of State

Room 256 State Capitol • Little Rock, Arkansas 72201-1094

501-682-1010 • Fax 501-682-3510

e-mail: arsos@sos.arkansas.gov • www.sos.arkansas.gov



VICINITY MAP
(N.T.S.)

LEGEND

- FOUND REBAR/PIPE (AS NOTED)
- SET 1/2" REBAR W/CAP, LS 1156
- FIRE HYDRANT
- UTILITY POLE W/GUY
- UTILITY POLE
- SIGN POST
- GAS LINE
- UNDGR TELEPHONE LINE
- UNDGR ELECTRIC
- OVERHEAD LINE
- WIRE FENCE
- CHAINLINK FENCE
- PROPERTY LINE
- EASEMENT
- SECTION LINE
- TREELINE

NO.	REVISIONS	BY

The essential building blocks...

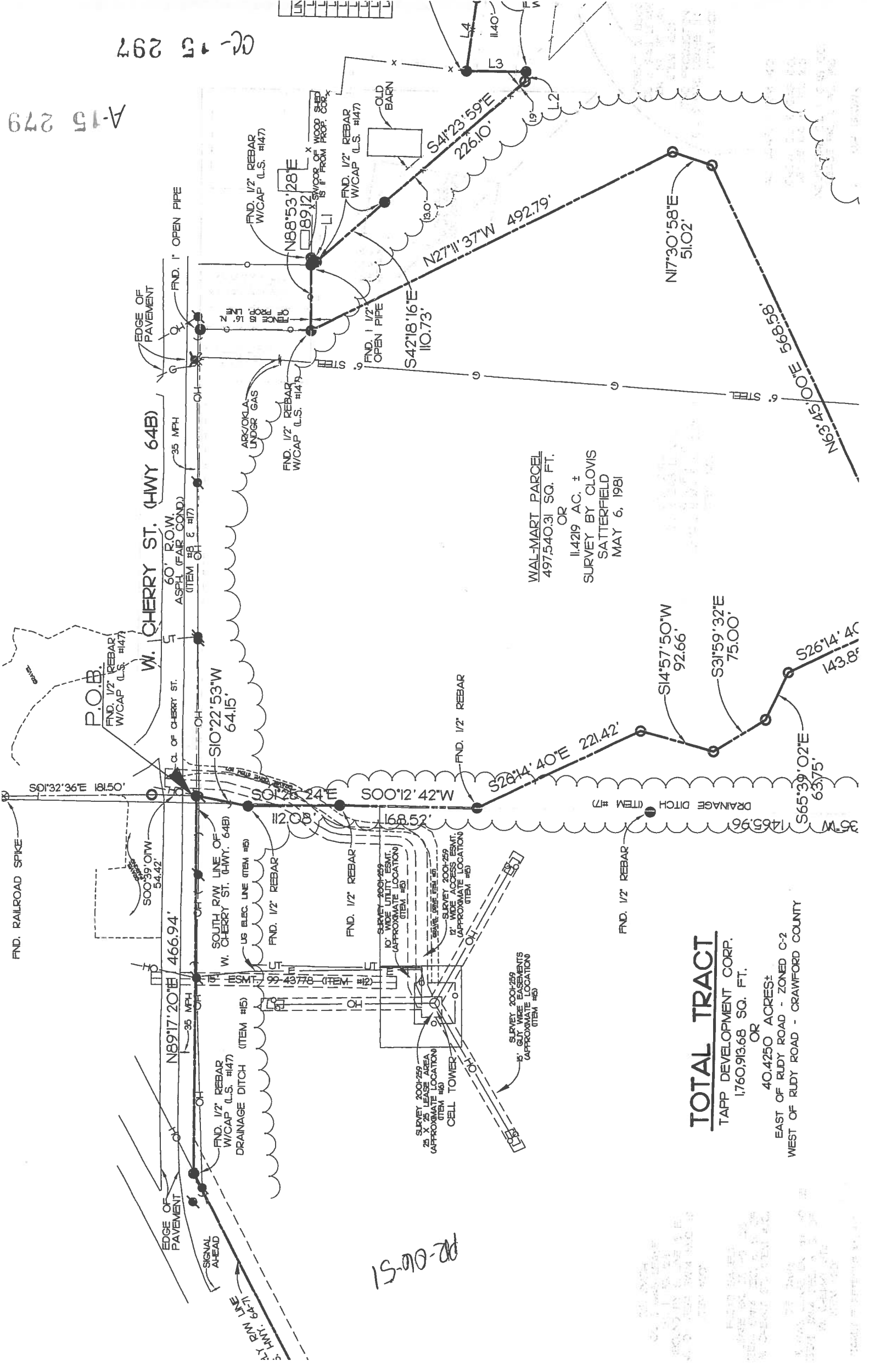
Civil Engineers - Landscape Architects - Land Surveyors

Freeland - Kauffman & Fredeen, Inc.
 1700 West Commerce Drive, Suite A
 Rogers, AR 72756
 Telephone 479-621-6699
 Fax 479-621-0602

Affiliate Freeland and Kauffman, Inc. Greenville, SC

A-15 279

CG-13 297



WAL-MART PARCEL
 497,540.31 SQ. FT.
 OR
 11,429 AC. ±
 SURVEY BY CLOVIS
 SATTERFIELD
 MAY 6, 1981

TOTAL TRACT

TAPP DEVELOPMENT CORP.
 1,760,913.68 SQ. FT.
 OR
 40,4250 ACRES±
 EAST OF RUDY ROAD - ZONED C-2
 WEST OF RUDY ROAD - CRAWFORD COUNTY

PR-06-51