



ARKANSAS SECRETARY OF STATE

MARK MARTIN

December 28, 2017

The Honorable Carla Ervin
White County Clerk
315 N. Spruce
Searcy, AR 72143

Re: City of Bald Knob Correction in City Boundary based on Ordinance O-09-07

Dear Ms. Ervin,

This letter acknowledges receipt and filing of a boundary correction based on Bald Knob Ordinance O-09-07. It was discovered that property described as being in part of the N1/2 SE1/4 of Section 9, Township 8 North, Range 5 West of this annexation was not included in the official version of municipal boundaries for Bald Knob requiring a boundary (geometry) correction on the state map.

Filing Type: Amendment – based on Annexation pursuant to A.C.A § 14-40-609 (petition by 100% of the land owners)

Effective Date: 10/5/2009

County: White

City: Bald Knob

City Ordinance: O-09-07

Dated: 10/17/2017

County Court Order: CO-2009-18

Date Filed: 07/20/2009 Hon. Michael Lincoln, White County Judge

A file marked copy of the GIS map with boundary correction along with the ordinance submitted to our Office are enclosed. By copy of this letter (and its enclosures), the Secretary of State hereby notifies the appropriate mapping authorities for Arkansas. Please retain these copies as official record of the filing of the municipal boundary change by the Arkansas Secretary of State.

If you have any questions or concerns regarding this pending filing, please contact our office at 501-682-3401.

Sincerely,

Cynthia Fisher
Special Projects Manager
Arkansas Secretary of State Legal Division
500 Woodlane St, Suite 256
Little Rock, AR 72201
501-682-3401

cc: Arkansas Geographic Information Systems Office (w/ encl)
Arkansas Highway and Transportation Department Mapping Department (w/ encl)
Department of Finance and Administration (w/encl)
Arkansas Public Service Commission (w.encl)
UALR Institution for Economic Advancement (w/encl)
Tom-Tom (w/encl)
Ms. Tammy Wools, Bald Knob City Clerk and Treasurer (w/encl)

Legal Division • 500 Woodlane Street • Suite 256 • Little Rock, Arkansas 72201-1094
501-682-3401 • Fax: 501-682-1213
e-mail: legal@sos.arkansas.gov • www.sos.arkansas.gov





**ARKANSAS
GIS OFFICE**

December 27, 2017

Ms. Cynthia Fisher
Arkansas Secretary of State Legal Division
500 Woodlane St. Room 256
Little Rock, AR 72201

RE: City of Bald Knob Boundary Correction

Ms. Fisher,

Thank you for coordinating with our office as we work to make boundary corrections to the City of Bald Knob based on Ordinance O-09-07. It was discovered that the property described as being in part of the N1/2 SW1/4 of Section 9, Township 8 North, Range 5 West was not fully represented in the state version of municipal boundaries, therefor requiring a boundary (geometry) correction.

Our office will wait completion of any additional steps necessary for the boundary correction, which normally comes from the Arkansas Secretary of State Elections Division.

Thank you,

Jennifer Wheeler, GIS Analyst
/jjw

Attachments:
GIS Office Map of Proposed Annexation
Secretary of State Municipal Change Checklist

FILED

DEC 28 2017

Arkansas
Secretary of State

H:\City_Annexations\Cities\Bald_Knob\20171227\Doc\20171227_BaldKnob_Annexation_Coordination_Letter.docx

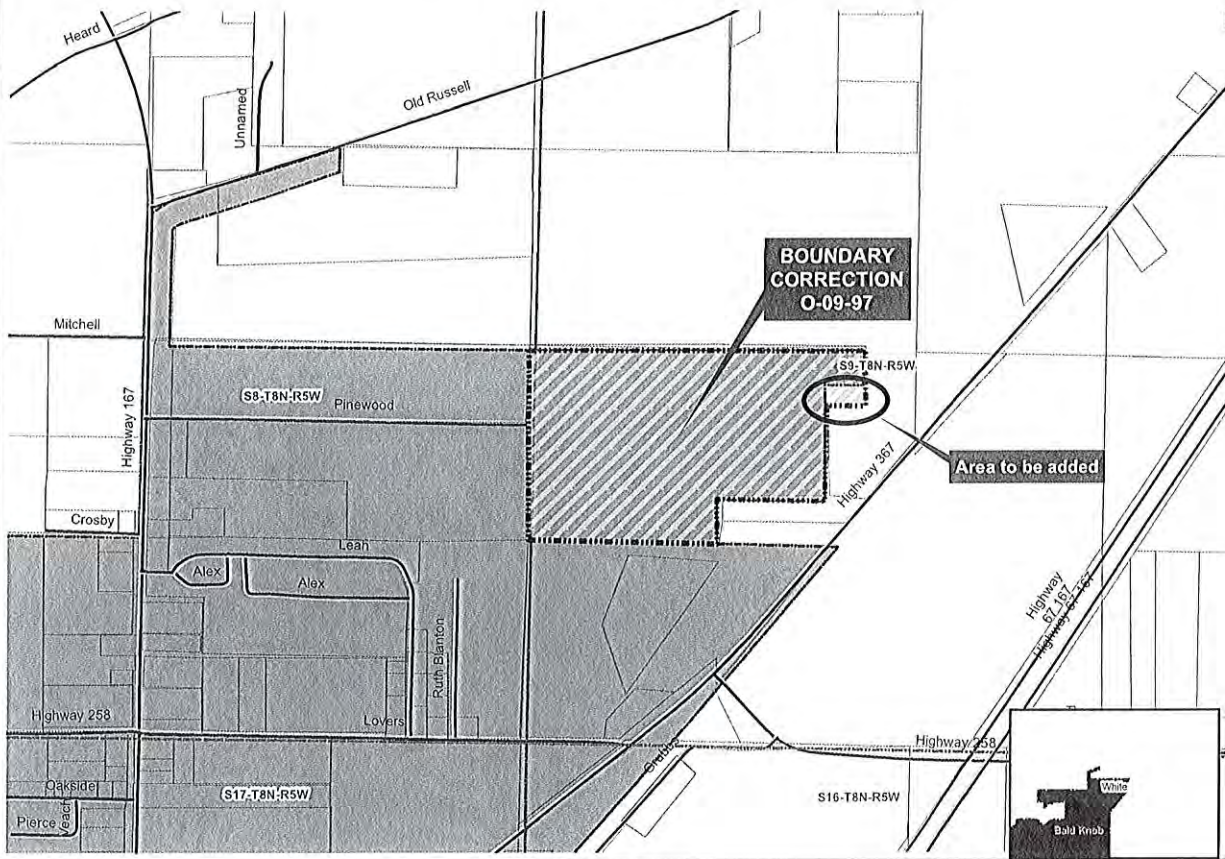
Boundary (Geometry) Correction: City of Bald Knob O-09-07
December 2017

City: Bald Knob
Mayor: Beth Callhoun

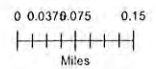
Arkansas Code 14-40-101.

Before an entity undertakes an annexation, consolidation, or detachment proceeding under this chapter, the entity shall coordinate with the Arkansas Geographic Information Systems Office for preparation of legal descriptions and digital mapping for the relevant annexation, consolidation, and detachment areas.

The map contained herein, is evidence, the entity has met requirements of Act 914 of 2015



- Annexation of Bald Knob & Industrial Park
- Sections
- Parcels
- Minor Road
- Existing City
- Neighboring City
- County Boundary



ARKANSAS GIS OFFICE

H:\City_Annexations\GIS\Bald_Knob\20171228

FILED
DEC 28 2017
Arkansas
Secretary of State

MISC 2009- 17132

10/13/09
C2

BEFORE THE CITY COUNCIL OF BALD KNOB, ARKANSAS

ORDINANCE NO: O-09-07

AN ORDINANCE TO ACCEPT INTO THE CITY LIMITS OF THE CITY OF BALD KNOB, ARKANSAS, CERTAIN TERRITORY ANNEXED INTO THE BALD KNOB CITY LIMITS BY ORDER OF THE COUNTY COURT OF WHITE COUNTY, DECLARING AN EMERGENCY AND FOR OTHER PURPOSES.

Whereas, the City of Bald Knob, Arkansas, and the Bald Knob Industrial Development Corporation petitioned the County Court of White County, Arkansas, to annex certain properties into the Bald Knob city limits, and

Whereas, the County Court of White County, Arkansas, on July 20, 2009, entered an order annexing certain properties into the Bald Knob city limits, and

Whereas, the City Council of the City of Bald Knob, Arkansas, desires to accept said properties and territory into the city limits of Bald Knob.

NOW THEREFORE BE IT ORDAINED, by the City Council for the City of Bald Knob, to-wit:

Section 1. The City Council of Bald Knob, Arkansas, hereby accepts into the city limits of Bald Knob, Arkansas, the following described territory:

City of Bald Knob property: A part of the N½ SW¼ of Section 9 Township 8 North, Range 5 West more particularly described as follows, to-wit: Commencing at the West Quarter Corner of said Section 9 for the POINT OF BEGINNING and thence S 89° 52' 35" E 1,332.97 feet to the NW Corner of the NE¼ SW¼ of said Section 9; thence S 89° 10' 41" E along the North line of said NE¼ SW¼ 984.39 feet; thence S 00° 24' 25" W 404.71 feet; thence N 89° 10' 41" W 265.83 feet to a Point on the East Top Bank of a North-South Ditch; thence S 02° 08' 11" E along the Top Bank of said Ditch 612.82 feet; thence N 89° 45' 51" W 749.38 feet; thence S 00° 36' 39" W 303.52 feet; thence N 89° 45' 22" W 1,324.39 feet to the SW Corner of said N½ SW¼ and thence N 00° 14' 27" E 1,325.08 feet back to the Point of Beginning, containing 60 acres, more or less.

Bald Knob Industrial Development Corporation property: A part of the N½ SE¼ of Section 8, Township 8 North, Range 5 West more particularly described as follows, to-wit: Commencing at the SE Corner of said Section 8 and thence N 01° 04' 29" E 1,324.65 feet the POINT OF Beginning and thence N 88° 34' 47" W 1,273.97 feet; thence N 01° 34' 13" E 384.78 feet; thence N 88° 34' 47" W 1,294.21 feet and to the East right of way of U.S. Highway 167; thence N 01° 34' 13" E 881.30 feet along said highway right of way line; thence N 18° 12' 59" E 51.44 feet; thence S 88° 47' 12" E 2,542.03 feet and thence S 01° 04' 29" W 1,324.64 feet back to the Point of Beginning, containing 67 acres, more or less.

EX
CERTIFICATE OF RECORD
STATE OF ARKANSAS COUNTY OF WHITE
I CERTIFY THAT THIS INSTRUMENT WAS FILED FOR RECORD
AND IS RECORDED AS STAMPED HEREON.
DATE 10-13-09 TIME 8:30 AM
BOOK 2009 PAGE 17132
TAMI KING, WHITE COUNTY CIRCUIT CLERK
Matthew Stueder PC

Prepared by
Don Roney
Atty at Law
211 West Arch Sealey AR 72143

FILED
DEC 28 2009
Arkansas
Secretary of State

MISC 2009- 17133

Section 2. That the Clerk of the County Court of White County, Arkansas, is hereby requested pursuant to A. C. A. § 14-40-605 to certify a copy of the plat of the annexed territory and one copy of the order of the County Court and to forward said certified copies along with a certified copy of this Ordinance to the Office of the Secretary of State for the State of Arkansas, and the Director of the Tax Division of the Arkansas Public Service Commission.

Section 3. It being hereby ascertained and declared that in as much as there is an immediate need to include the above described properties and territory into the city limits of the City of Bald Knob, Arkansas, for the purpose of providing city services to said properties and allow the orderly development of said properties under the applicable city codes that an emergency exists and this ordinance being necessary for the preservation of the public health, safety and welfare shall take effect from and after the date of its passage.

Passed and Adopted this 5th day of October, 2009.

CITY OF BALD KNOB, ARKANSAS

Robert Carpenter
ROBERT CARPENTER, Mayor

Attest:

Tammy Wools
TAMMY WOOLS, City Recorder

