



# ARKANSAS SECRETARY OF STATE

## MARK MARTIN

April 26, 2016

The Honorable Tena O'Brien  
Benton County Clerk  
215 E Central Ave, Suite 217  
Bentonville, AR 72712-5304

Re: City of Bentonville Annexation, Bentonville Ordinance 2016-49

Dear Ms. O'Brien,

This letter acknowledges receipt and filing of the following notice of municipal boundary change by the Office of the Secretary of State:

Filing Type: Annexation by petition pursuant to A.C.A § 14-40-602 (petition by a majority of the land owners)  
Effective Date: April 14, 2016  
County: Benton City: Bentonville  
City Ordinance: 2016-49 Dated: 04/12/2016  
County Court Order: CC 2016-02 Dated: 02/22/2016 Hon. Robert Clinard, County Judge, Benton County

A file marked copy of the ordinance, court order and exhibits submitted to our Office are enclosed. By copy of this letter (and its enclosures), the Secretary of State hereby notifies the appropriate mapping authorities for Arkansas. Please retain these copies as official record of the filing of the municipal boundary change by the Arkansas Secretary of State.

If you have any questions or concerns regarding this pending filing please contact our office at 501-682-3401.

Sincerely,

A handwritten signature in cursive script that reads "Cynthia Fisher".

Cynthia Fisher  
Arkansas Secretary of State Legal Division  
500 Woodlane St, Room 256  
Little Rock, AR 72201  
501-682-3401

cc: ✓ Arkansas Geographic Information Systems Office (w/ encl)  
Arkansas Highway and Transportation Department Mapping Department (w/ encl)  
UALR Institution for Economic Advancement (w/encl)  
Tom-Tom (w/encl)  
Linda Spence, Bentonville City Clerk and Treasurer (w/encl)



# BENTON COUNTY

STATE OF ARKANSAS

TENA O'BRIEN

COUNTY CLERK & VOTER REGISTRAR  
215 EAST CENTRAL, SUITE 217  
BENTONVILLE, AR 72712-5373

PROBATE COURT CLERK  
COURTHOUSE, 102 N.E. "A" STREET  
BENTONVILLE, AR 72712-5350

April 14, 2016

Honorable Mark Martin  
Secretary of State  
Room 256 State Capitol  
Little Rock, AR 72201-1094

Dear Secretary Martin:

RE: Callis, Jon and Velena  
City of Bentonville Annexation  
Benton County Court Case No. CC# 2016-02

Dear Secretary Martin:

In accordance with the law, I am enclosing a certified copy of each of the following:

1. Map (survey and vicinity map) of the affected area
2. Decree of Annexation entered on February 22, 2016
3. Ordinance No. 2016-49 adopted on April 12, 2016 by the City of Bentonville

If you have any questions regarding this matter, please do not hesitate to call my office.

Sincerely,

*Tena O'Brien*

Tena O'Brien

By: T. Underwood

RECEIVED

APR 22 2016

Arkansas  
Secretary of State

FILED

APR 25 2016

Arkansas  
Secretary of State

Enclosures

COUNTY CLERK  
(479) 271-1013  
FAX (479) 271-1019

VOTER REGISTRAR  
(479) 271-5704

BENTONVILLE  
(479) 271-1013  
FAX (479) 271-1019

SILOAM SPRINGS  
(479) 238-0120  
FAX (479) 524-8534

PROBATE COURT CLERK  
(479) 271-5727  
FAX (479) 271-1712

ROGERS  
(479) 636-3727  
FAX (479) 636-4922  
ARCHIVIST (479) 636-1037  
FAX (479) 636-1053

RECEIVED

APR 22 2016

Arkansas  
Secretary of State

FILED

APR 25 2016

Arkansas  
Secretary of State  
ORDINANCE NO. 2016-49

FILED

2016 APR 14 AM 10:11

TERESA JOHNSON  
CO. & PROBATE CLERK  
BENTON COUNTY, AR

**AN ORDINANCE ACCEPTING THE ANNEXATION OF CERTAIN TERRITORY TO THE CITY OF BENTONVILLE, ARKANSAS, AND MAKING SAME A PART OF THE CITY OF BENTONVILLE, AND ASSIGNING SAME TO WARDS.**

WHEREAS, petition was filed with the County Clerk of Benton County, Arkansas by **Jon and Velena Callis**, owner(s) of the hereinafter described territory, praying that said territory be annexed to, and made a part of the City of Bentonville, Arkansas, and

WHEREAS, on the 22<sup>nd</sup> day of February, 2016, the County Court of Benton County, Arkansas, found that the petition was signed by the owners of said territory; that said territory was contiguous and adjoining the present corporate limits of the City of Bentonville, Arkansas; that an accurate plat or map of said territory had been filed with, and made a part of said petition; that proper notice had been given for the time and in the manner prescribed by law, and that all things pertaining thereto had been done in the manner prescribed by law, and that said lands and territory should be annexed to and a part of the City of Bentonville, Arkansas, subject to the acceptance of same by the City Council of said City at the proper time, as provided by law; and

WHEREAS, the time fixed by law for appealing from said order of annexation made by the County Court has expired and no appeal has been taken from said order.

**NOW, THEREFORE BE IT ORDAINED BY THE CITY COUNCIL OF THE CITY OF BENTONVILLE, ARKANSAS:**

**Section 1.** That the lands described on the attached Exhibit A is territory contiguous to and adjoining the City of Bentonville, Arkansas be and the same is hereby accepted as part of and annexed to and made a part of the City of Bentonville.

**Section 2.** That the above described territory shall be annexed to and made a part of Ward 2 of the City of Bentonville, and the same shall henceforth be a part of said ward as fully as existing parts of said ward.

2016 ' 1477

FILED

Section 3. That the above described territory shall be zoned A-1, to be used in accordance with City zoning laws and the laws of the State of Arkansas. 2016 APR 14 AM 10:11

PASSED AND APPROVED THIS 12th DAY OF April 2016.

TENA O'BRIEN  
CLERK  
BENTON COUNTY, AR

APPROVED: Bob McCarlin  
Mayor

ATTEST: Linda Spence  
Clerk

RECEIVED

APR 22 2016

Arkansas  
Secretary of State

FILED

APR 25 2016

Arkansas  
Secretary of State

STATE OF ARKANSAS )  
COUNTY OF BENTON )

CERTIFICATE OF CLERK

I, TENA O'BRIEN, Clerk of the County and Probate Courts in and for the County and State aforesaid, do hereby certify that this instrument of writing is a true and complete copy,

and the same appears of record in, County Court Record  
Book 2016 Page 1478 being on file in my said office.

I have hereunto set my hand and official seal this 14th  
day of April, 2016

TENA O'BRIEN, Clerk  
Benton County, Arkansas  
By B. Barrett

2016 1478

Exhibit 'A'  
'Callis Annexation'

FILED

2016 APR 14 AM 10:11

JOHN W. BIRNIE  
CO. & PROBATE CLERK  
BENTON COUNTY, AR

Part of the NE ¼ of the NE ¼ of Section 34, Township 20N, Range 31W, Benton County, Arkansas and more particularly described as follows:

Beginning at the NW Corner of said NE ¼ of the NE ¼;  
Thence S 87° 20' 11" E, 247.70';  
Thence S 01° 52' 01" W, 861.92';  
Thence N 86° 06' 08" W, 165.36';  
Thence N 81° 04' 30" W, 96.06;  
Thence N 02° 44' 22" E, 847.80' to the point of beginning.

RECEIVED

APR 22 2016

Arkansas  
Secretary of State

2016 1479

Legend

Proposed Annexation

Action

-  Annexation
-  BENTONVILLE

ROYAL AVE

FILED

2016 APR 14 AM 10:11

TENA O'BRIEN  
CO. & PROBATE CLERK  
BENTON COUNTY, AR

RECEIVED

APR 22 2016

Arkansas  
Secretary of State

NW WHIT OAK RD  
NW DEER RUN AVE  
SW HIGHLAND NW HIGHLAND RD

FILED

APR 25 2016

Arkansas  
Secretary of State

STATE OF ARKANSAS )  
COUNTY OF BENTON )

CERTIFICATE OF CLERK

I, TENA O'BRIEN, Clerk of the County and Probate Courts in and for the County and State aforesaid, do hereby certify that this instrument of writing is a true and complete copy,

and the same appears of record in County Court Record

Book 2016 Page 1480 being on file in my said office.

I have hereunto set my hand and official seal this 14th

day of April, 20 16

TENA O'BRIEN, Clerk  
Benton County Arkansas

By: B. Barnett

SW 4TH ST

SW FOUR WINDS AVE

SW GRACIE FARMS AVE

SW TOWN Vt RD  
SW TOWN VI RD

TOWN VU RD

SW RIVER ROCK ST

SW GRANITE ST

FIELDSTONE BLVD

SW WALLSTONE RD



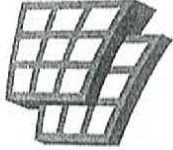
1 inch = 388 feet

Annexation-Callis 2016 1480  
5.00 Acres Total



FILED

2016 APR 19 AM 10:41



ARKANSAS  
GIS OFFICE

TENA O'BRIEN  
CO. & PROBATE CLERK  
BENTON COUNTY, ARK

April 19, 2016

Mrs. Tiffany Underwood  
Benton County Clerk's Office  
215 E. Central Ave.  
Bentonville, AR 72712

FILED

APR 25 2016

Arkansas  
Secretary of State

RECEIVED

APR 22 2016

Arkansas  
Secretary of State

RE: City of Bentonville Annexation Coordination Requirement

Mrs. Underwood,

Thank you for coordinating with our office as you seek to annex property into the City of Bentonville, AR case number CC2016-02. This letter represents confirmation that you have properly coordinated with our office (Arkansas GIS Office) as specified in § 14-40-101 (Act 914 of 2015) of the 90<sup>th</sup> General Assembly.

Our office will wait completion of any additional steps necessary for the proposed boundary change, which normally comes from the Arkansas Secretary of State Elections Division after any appropriate filing by the County Clerk.

Thank you,

Richie Pierce, Sr. GIS Analyst  
/rp

FILED

RECEIVED

2016 APR 19 AM 10:41

APR 22 2016

FILED

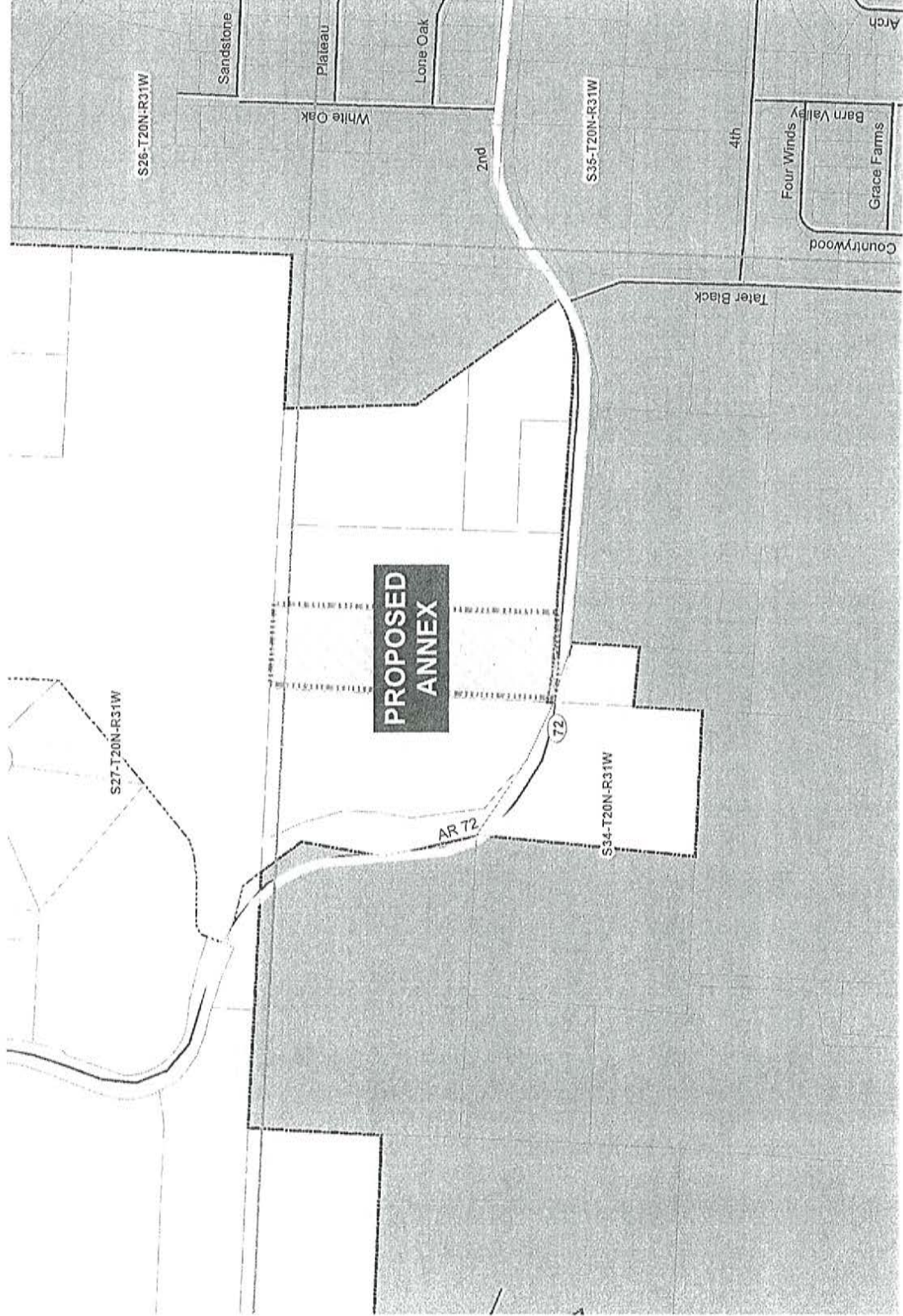
APR 25 2016

Arkansas Proposed Annex: City of Bentonville  
Secretary of State April 2016

TENA O'BRIEN  
CO. & PROBATE CLERK  
BENTON COUNTY, ARK.

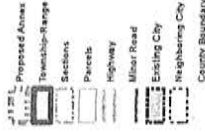
Arkansas  
Secretary of State

City: Bentonville  
Mayor: Bob McCaslin



Arkansas Code 14-40-101.  
Before an entity undertakes an annexation, consolidation, or detachment proceeding under this chapter, the entity shall coordinate with the Arkansas Geographic Information Systems Office for preparation of legal descriptions and digital mapping for the relevant annexation, consolidation, and detachment areas.

The map contained herein, is evidence the entity has met requirements of Act 914 of 2015



ARKANSAS  
GIS OFFICE