



ARKANSAS SECRETARY OF STATE

MARK MARTIN

January 12, 2017

The Honorable Kade Holliday
Craighead County Clerk
P.O. Box 1167
Jonesboro, AR 72403-1167

Re: City of Jonesboro Annexation Ordinance 3210

Dear Mr. Holliday,

This letter acknowledges receipt and filing of the following notice of municipal boundary change by the Office of the Secretary of State:

Filing Type: Annexation by petition pursuant to A.C.A § 14-40-609 (petition by 100% of the landowners)
Effective Date: 03/27/2017 (emergency declared)
County: Craighead City: Jonesboro
City Ordinance: 3210 Dated: 03/27/2000
County Court Order: Filed: 02/02/2000

A file marked copy of the court order submitted to our Office is enclosed. By copy of this letter (and its enclosure), the Secretary of State hereby notifies the appropriate mapping authorities for Arkansas. Please retain these copies as official record of the filing of the municipal boundary change by the Arkansas Secretary of State.

If you have any questions or concerns regarding this filing please contact our office at 501-682-3401.

Sincerely,

A handwritten signature in cursive script that reads "Cynthia Fisher".

Cynthia Fisher
Arkansas Secretary of State Legal Division
500 Woodlane St
Little Rock, AR 72201
501-682-3401

cc: Arkansas Geographic Information Systems Office (w/ encl)
Arkansas Highway and Transportation Department Mapping Department (w/ encl)
UALR Institution for Economic Advancement (w/encl)
Tom-Tom (w/encl)
Ms. Donna Jackson, Jonesboro City Clerk (w/encl)





Arkansas Secretary of State

Mark Martin Arkansas Secretary of State, 500 Woodlane Ave, Little Rock, AR 72201-1094

Municipal Boundary Change Checklist

County: Craighead City/Town: Jonesboro

City Ordinance/Resolution No: 3210 Date approved: 03/27/2000

County Court Case No: _____ Date Order Filed: 02/02/2000

Type: Annexation by Petition of all Landowners A.C.A. §14-40-609

Date Change Effective: 03/27/2000 Emergency clause: Yes No

For Circuit Court Challenge: Date Filed: _____ Upheld Overturned Other (attach explanation)

Initiating party:

All Landowners Majority Landowners Municipal Governing Body State Other _____

Supporting Documentation attached (check all that apply):

- File marked copy of City Ordinance/Resolution (not required for A.C.A §14-40-1801)
- File marked copy of County Court Order (not required for A.C.A. §14-40-501)
- Proof of Publication for all Legal Notices (Hearing, Election, City Ordinance/Resolution)
- Copy of Arkansas GIS approved printed map and certification letter
- File marked copy of Petition Part or File marked copy of the certified special election results (if applicable)
- File marked copy of Complaint and final Circuit Court Order (Court Challenge only)

Municipal Contact:

Name: Ms. Donna Jackson Title: Jonesboro City Clerk

Street Address: P.O. Box 1845

City: Jonesboro St: AR Zip code: 72403

City/County Official:

Signature: Hon. Kade Holliday Title: Craighead County Clerk

Date: _____

Complete one form for each ordinance/resolution and attach it as a cover page to the supporting document set. Submit the documents to Arkansas Secretary of State, Atten: Municipal Boundary Filing, 500 Woodlane Ave, Little Rock, AR 72201-1094

Office of the Arkansas Secretary of State use only

Received by: Cynthia Fisher

FILED
JAN 12 2017
Arkansas
Secretary of State



DONNA K. JACKSON
CITY CLERK

December 27, 2016

Cynthia Cole Fisher
Special Projects Manager
Arkansas Secretary of State
500 Woodland St, Suite 256
Little Rock, AR 72201-1094

Re: Annexation Ordinances/Resolutions Needed

Dear Ms. Fisher:

In our audit of ordinances/resolutions regarding annexations since 2000, for the City of Jonesboro, we have discovered three (3) additional legislative documents not part of the Craighead County Clerk's findings. They are: Ord. No. 3210 – adopted in 2000. Ord. No. 08:045 adopted in 2008, and a de-annexation, Ord. No. 16:057 adopted in 2016. Please note the file stamp of each of the documents by the Craighead County Clerk's Office as required by State Statute.

In the future, I hope you will feel free to contact me if questions arise regarding annexations and de-annexations.

Sincerely,

Donna K. Jackson
Jonesboro City Clerk

Enclosures

Executive Office
City Hall
P.O. Box 1845
300 S. Church
Jonesboro, AR 72403

Phone: 870-935-0305
Fax: 870-933-4637

Email: djackson@jonesboro.org

RECEIVED

JAN 04 2017

**Arkansas
Secretary of State**

F I L E D

JAN 12 2017

**Arkansas
Secretary of State**

CMMsr:sc
March 21, 2000

CO-2016-4

ORDINANCE NO. 3210

FILED
DEC 27 2016
KADE HOLLIDAY
COUNTY & PROBATE COURT CLERK

AN ORDINANCE ACCEPTING CERTAIN LANDS ANNEXED TO THE CITY OF JONESBORO, ARKANSAS, BY ORDER OF THE COUNTY COURT OF CRAIGHEAD COUNTY, ARKANSAS; ASSIGNING SAID ANNEXED TERRITORY TO WARD 4; ZONING SAID ANNEXED TERRITORY RESIDENTIAL (R-1); DECLARING AN EMERGENCY; AND FOR OTHER PURPOSES.

WHEREAS, a petition for annexation of certain lands to the City of Jonesboro, Arkansas, hereinafter described, was duly filed in the County Court of Craighead County, Arkansas, on December 29, 1999; and

WHEREAS, said petition for the annexation of said lands was duly signed by the sole owners of all of the acreage to be annexed to the City of Jonesboro, Arkansas; and

WHEREAS, an order setting a hearing upon said petition was entered, notice was duly published of said hearing and a hearing upon said petition was duly had and held in the County Court of Craighead County, Arkansas, on February 2, 2000, at which hearing it was duly found and declared that said petition for annexation was right and proper and that such lands hereinafter described should be annexed to the City of Jonesboro, Arkansas; whereupon an order of annexation was made and entered; and

WHEREAS, thirty days having expired since the order of annexation dated February 2, 2000, and no proceedings

FILED

JAN 12 2017

Arkansas
Secretary of State

Page 2

to prevent said annexation having been filed in the Circuit Court for the Jonesboro District of Craighead County, Arkansas, said annexation proceedings were in all things confirmed by the County Court by its order of March 6, 2000.

NOW, THEREFORE, BE IT ORDAINED AND ENACTED BY THE CITY COUNCIL OF THE CITY OF JONESBORO, ARKANSAS:

Section 1. The territory and lands annexed to the City of Jonesboro by order of the County Court of Craighead County, Arkansas, by its order of February 2, 2000, be and are hereby accepted by the City of Jonesboro, Arkansas, and said territory hereinafter described shall be hereafter deemed and taken to be a part and parcel of the limits of the City of Jonesboro, Arkansas, and the inhabitants residing therein shall have and enjoy all of the privileges of the inhabitants within the original limits of the City of Jonesboro, Arkansas.

Section 2. The lands and territory hereby annexed to and accepted by the City of Jonesboro, Arkansas, are more particularly described as follows:

The Southeast Quarter of the Northeast Quarter of Section 10, Township 13 North, Range 3 East, Craighead County, Arkansas;

The West Half of the Northwest Quarter of Section 11, Township 13 North, Range 3 East, Craighead County, Arkansas, LESS AND EXCEPT the North 300.00 feet and the East 300.00 feet.

Section 3. The lands and territory annexed to the City of Jonesboro and hereby accepted by the City of

Page 3

Jonesboro are hereby assigned and attached to Ward 4 of the City of Jonesboro, Arkansas.

Section 4. Said lands and territory annexed to the City of Jonesboro are hereby zoned Residential (R-1).

Section 5. It is hereby found and declared by the City Council of the City of Jonesboro, Arkansas, that there is now an extreme urgency that the territory herein be immediately annexed to and accepted by the City of Jonesboro, Arkansas, so that said property and the citizens and property owners of said territory described herein can be entitled to fire, police, zoning and other protection and benefits, and that said benefits and protection are urgently needed now in order to allow orderly growth and development of said lands and territory. Therefore, an emergency is declared to exist and this ordinance being necessary for the preservation of the public peace, health and safety, it shall take effect and be in full force from and after its passage.

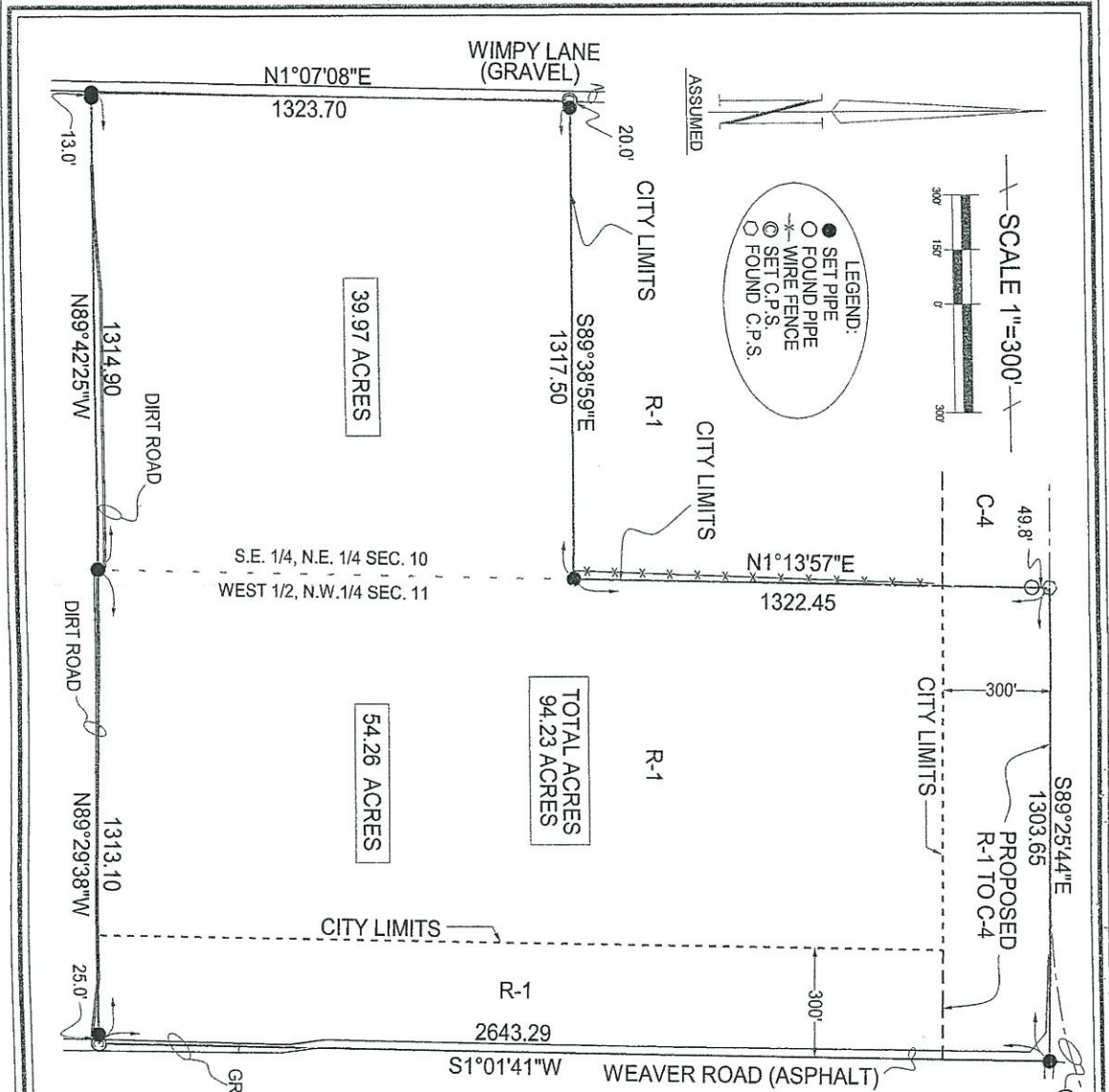
PASSED AND ADOPTED this 20TH day of March, 2000.


Hubert Brodell, Mayor

Attest

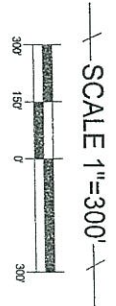

Donna Jackson, City Clerk

Certified Copy
DATE 3/27/00
DONNA K. JACKSON
CITY CLERK



LEGEND:

- SET PIPE
- FOUND PIPE
- WIRE FENCE
- ⊙ SET C.P.S.
- FOUND C.P.S.



39.97 ACRES

54.26 ACRES

TOTAL ACRES 94.23 ACRES

49.8'

C-4

300'

PROPOSED R-1 TO C-4

300'

CIL HWY. #49 (SOUTHWEST DRIVE)

ANNEXATION PLAN

DESCRIPTION

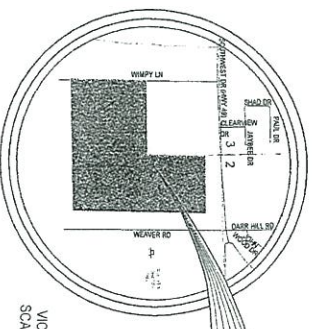
THE SOUTHEAST QUARTER OF THE NORTHEAST QUARTER OF SECTION 10, TOWNSHIP 13 NORTH, RANGE 3 EAST, CRAIGHEAD COUNTY, ARKANSAS.

THE WEST HALF OF THE NORTHWEST QUARTER OF SECTION 11, TOWNSHIP 13 NORTH, RANGE 3 EAST, CRAIGHEAD COUNTY, ARKANSAS LESS AND EXCEPT THE NORTH 300.00 FEET AND THE EAST 300.00 FEET.

FILE

JAN 12 2017

Arkansas Secretary of State



TROY L. SHEETS SURVEYING

"WE SURVEY THE EARTH"

206 W ARVON • P.O. BOX 1672
JOHNSBORO, ARKANSAS 72043
PH: 870-935-2820 FAX: 870-935-1293

DATE: 12-17-09 SCALE: 1"=200'

BY: DOYLE YARBROUGH DRAWN BY: SJS

DATE: 01-10-2010 CHECKED BY: SJS

500 S. MAIN ST. SUITE 1114021, JOHNSBORO, AR 72043

DEED BOOK 589 PAGE 382 - 385
DATE 03/29/2000
TIME 09:47:23 AM
RECORDED IN
OFFICIAL RECORDS OF
CRAIGHEAD COUNTY
PAUL HUDSON
CIRCUIT CLERK
Shannon Vibbers, D.C.