



ARKANSAS SECRETARY OF STATE

MARK MARTIN

May 10, 2018

The Honorable Peggy Fitzjurls
Logan County and Probate Clerk
25 West Walnut Street
Paris, AR 72855

Re: City of Paris Annexation Ordinance 2007-01

Dear Ms. Fitzjurls,

This letter acknowledges receipt and filing of the following notice of municipal boundary change by the Office of the Secretary of State:

Filing Type: Annexation pursuant to A.C.A § 14-40-609 (annexation by 100% of the landowners)

Effective Date: 3/5/2007 (by Municipal Ordinance)

County: Logan

City: Paris

City Ordinance: 2007-1

Dated: 03/05/2007

County Court Order: CC-2008-32

Filed: 10/10/2007

Hon. Edgar Lee Holt, Logan County Judge

A file marked copy of the ordinance, Court Order and exhibits submitted to our Office are enclosed. By copy of this letter (and its enclosures), the Secretary of State hereby notifies the appropriate mapping authorities for Arkansas. Please retain these copies as official record of the filing of the municipal boundary change by the Arkansas Secretary of State.

If you have any questions or concerns regarding this pending filing, please contact our office at 501-682-3401.

Sincerely,

A handwritten signature in cursive script that reads "Cynthia Fisher".

Cynthia Fisher
Arkansas Secretary of State Legal Division
500 Woodlane St, Room 256
Little Rock, AR 72201
501-682-3401

cc: Arkansas Geographic Information Systems Office (w/ encl)
Arkansas Highway and Transportation Department Mapping Department (w/ encl)
Department of Finance and Administration (w/encl)
Arkansas Public Service Commission (w.encl)
UALR Institution for Economic Advancement (w/encl)
Tom-Tom (w/encl)
Ms. Mary Sullivan, Paris City Clerk (w/encl)



Arkansas Secretary of State

Mark Martin Arkansas Secretary of State, 500 Woodlane Ave, Little Rock, AR 72201-1094

Municipal Boundary Change Checklist

County: LOGAN City/Town: PARIS

City Ordinance/Resolution No: ORD. 2007-1 Date approved: 03-05-2007

County Court Case No: 2008-32 Date Order Filed: 10-10-2008

Type: A.C.A § 14-40-609

(Choose from the list of Arkansas Code Sections located on the back)

Date Change Effective: 03-05-2007 Set by: Municipal Ordinance Emergency Clause Court Default
(Required by Act 655 of 2017)

For Circuit Court Challenge: Date Order Filed: _____ Upheld Overturned Other (attach explanation)

Initiating party:

All Landowners Majority Landowners Municipal Governing Body State Other _____

Supporting Documentation attached (check all that apply):

- File marked copy of City Ordinance/Resolution (required)
- File marked copy of County Court Order (required except for island annexation and annexation approved by election)
- Copy of Arkansas GIS approved printed map and certification letter (required)
- Proof of Publication for all Legal Notices (include Hearing, Election, and City Ordinance/Resolution notices)
- File marked copy of Petition Part or File marked copy of the certified special election results (if applicable)
- File marked copy of Complaint and final Circuit Court Order (Court Challenge only)

Municipal Contact:

Name: MARY L. SULLIVAN Title: CITY CLERK

Street Address: PO BOX 271 100 NORTH EXPRESS

City: PARIS St: AR Zip code: 72855

Complete one form per ordinance/resolution, attach it as a cover page to the supporting document set and submit to the County Clerk's Office within 45 days of the Effective Date as required by Act 655 of 2017

County Officials:

Signature: [Handwritten Signature] Title: 04-13-2018 Logan County Judge

Date: 04-13-2018

Pursuant to Act 655 of 2017, County Officials must submit a file-marked copy of municipal boundary change documents within 30 days of receipt to: Arkansas Secretary of State, Attn: Municipal Boundary Filing, 500 Woodlane Ave Suite 256, Little Rock, AR 72201-1094

Office of the Arkansas Secretary of State use only

Received by: [Handwritten Signature]

FILED

MAY 10 2018

Arkansas Secretary of State

J.P. Wells
764 Kalamu 200

7003 218
Recorded in the Above
Deeds and Mortgages Book & Page
03-09-2007 03:12:08 PM
Everly Kellar-Circuit Clerk
Logan County, AR Northern Dist

ORDINANCE NO. 2007- 1

**AN ORDINANCE FOR THE ANNEXATION OF CERTAIN CONTIGUOUS
LANDS INTO THE CITY OF PARIS, ARKANSAS; DECLARING AN
EMERGENCY; AND FOR OTHER PURPOSES**

WHEREAS, the City Council of Paris, Arkansas has the desire to grow and expand its boundaries, and

WHEREAS, the City Council of Paris, Arkansas, and the property owner of the following described property desire such property to be within the City of Paris, Arkansas:

A certain tract of land located in the NW ¼ of the SW 1.4 of Section 6, Township 7 North, Range 25 West in Logan County, Arkansas and being more particularly described as follows:

Commencing at a set mag nail at the SW corner of said NW ¼ of the SW ¼; thence North 01° 58' 32" East 273.75 feet along the West line thereof to set mag nail. The point of beginning: thence North 01° 58' 32" East 234.58 feet along said West line to a set mag nail; thence North 01° 58' 32" East 234.58 feet along said West line to a set mag nail; thence South 88° 44' 09" East 284 feet to a point; thence South 01° 58' 32" West 339 feet to a point on the centerline of Schouweiler Lane; thence along the centerline Schouweiler Lane; thence South 64° 13' 37" West 304 feet to the point of beginning.

Subject to all easements, and right of ways of record.

WHEREAS, the above described lands are not platted but are held to be sold as suburban property, and

WHEREAS, the City Council of Paris has the Authority to Annex the above described property under Arkansas Code Annotated 14-40-302 and deems it in the best interest of the City.

Be it Ordained by the City Council of Paris, Arkansas as follows:

SECTION I: That the City of Paris, Arkansas hereby Annexes

A certain tract of land located in the NW ¼ of the SW 1.4 of Section 6, Township 7 North, Range 25 West in Logan County, Arkansas and being more particularly described as follows:

Commencing at a set mag nail at the SW corner of said NW ¼ of the SW ¼; thence North 01° 58' 32" East 273.75 feet along the West line thereof

F I L E D

MAY 10 2018

Arkansas
Secretary of State


to set mag nail. The point of beginning: thence North 01° 58' 32" East 234.58 feet along said West line to a set mag nail; thence North 01° 58' 32" East 234.58 feet along said West line to a set mag nail; thence South 88° 44' 09" East 284 feet to a point; thence South 01° 58' 32" West 339 feet to a point on the centerline of Schouweiler Lane; thence along the centerline Schouweiler Lane; thence South 64° 13' 37" West 304 feet to the point of beginning.

SECTION II: That the property is to be held as suburban property.

SECTION III: Emergency Clause: An emergency is hereby deemed to exist and this Ordinance being necessary for the health, safety and welfare of the citizens of Paris, Arkansas, shall be in full force and effect immediately following its passage and publication.

PASSED AND APPROVED this 5TH day of March, 2007, by a two-thirds (2/3) or more majority vote of the Paris City Council.

Emergency Clause passed and approved this 5TH day of March, 2007, by a two-thirds (2/3) or more majority vote of the Paris City Council.


Bill Elskén
Mayor, City of Paris

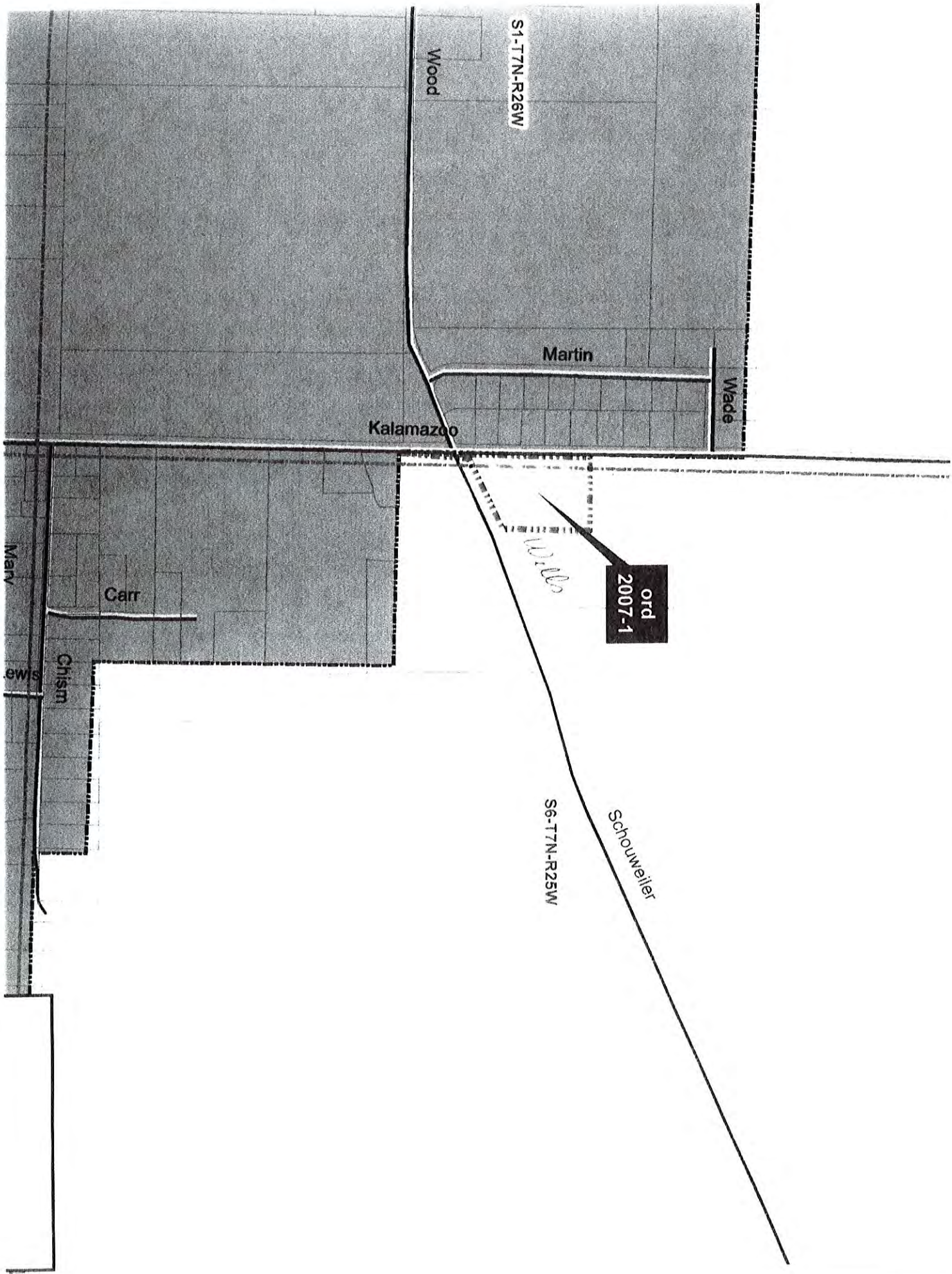
Attest:


Mary Sullivan
Clerk



Loosan County - AR Northern Dist
I certify this instrument was filed on
03-09-2007 03:12:08 PM
and recorded in Deeds and Mortgages Book
7003 at pages 218 - 219
Everly Kellar-Circuit Clerk





S1-T7N-R26W

Wood

Martin

Wade

Kalamazoo

Carr

Chism

Marv

Lewis

ord
2007-1

Handwritten signature

S6-T7N-R25W

Schuweijer

IN THE COURT OF LOGAN COUNTY ARKANSAS

IN THE MATTER OF ANNEXATION OF
CERTAIN CONTIGUOUS LANDS INTO
THE CITY OF PARIS, ARKANSAS

CC ORDER 2008-32

ORDER

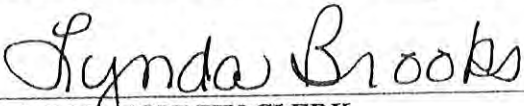
Now comes from the City of Paris an Ordinance annexing certain contiguous lands into the city of Paris, Arkansas. The Court being well and sufficiently advised as to the facts and the law herein, and thereby doth find the attached ordinance to be a true and correct copy of Ordinance 2007-01 as on record with the City of Paris, Arkansas.

I, Edgar Lee Holt, County Judge in and for the County of Logan, State of Arkansas, do hereby certify that I have attached the proper paperwork, legal description and made of record in Logan County Clerk's office this order confirming annexation of said lands this 10th day of October, 2008.



LOGAN COUNTY JUDGE

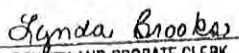
ATTEST DATE: Oct 10, 2008



LOGAN COUNTY CLERK

Attachments:
City of Paris Ordinance 2007-01

CERTIFIED COPY OF THE ORIGINAL INSTRUMENT



COUNTY AND PROBATE CLERK
NORTHERN DISTRICT OF LOGAN COUNTY, ARKANSAS

FILED FILED FOR RECORD

MAY 10 2018

OCT 10 2008

Arkansas
Secretary of State
LYNDA BROOKS
County and Probate Clerk
Logan County, AR



**ARKANSAS
GIS OFFICE**

August 25, 2017

Mrs. Mary L. Sullivan
Paris City Clerk
City of Paris
PO Box 271
Paris, AR 72855

RE: City of Paris Annexation Coordination Requirement

Mrs. Sullivan,

Thank you for coordinating with our office as you seek to annex property into the City of Paris, AR Ordinance 2007-1. This letter represents confirmation that you have properly coordinated with our office (Arkansas GIS Office) as specified in § 14-40-101 (Act 914 of 2015) of the 90th General Assembly.

Our office will wait completion of any additional steps necessary for the proposed boundary change, which normally comes from the Arkansas Secretary of State Elections Division after any appropriate filing by your County Clerk.

Thank you,

Jennifer Wheeler, GIS Analyst
/jjw

Attachments:
GIS Office Map of Proposed Annexation
Secretary of State Municipal Change Checklist

F I L E D

MAY 10 2018

**Arkansas
Secretary of State**

H:\City_Annexations\Cities\Paris\20170814_Reconciliation\Doc\20170825_Paris_Annexation_Coordination_Letter.docx

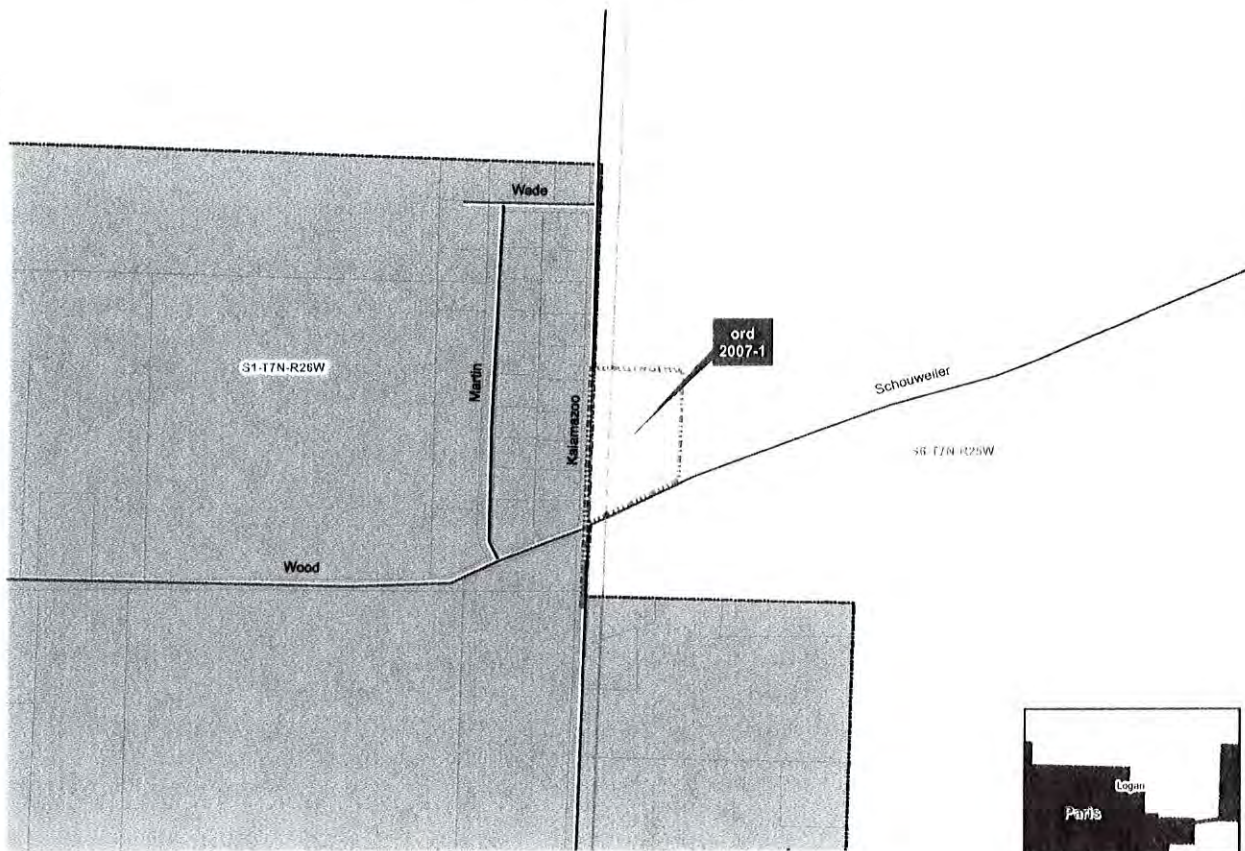
City of Paris - Annexation Ordinance 2007-1
August 2017

City: Paris
Mayor: Daniel Rogers

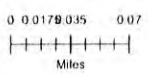
Arkansas Code 14-40-101

Before an entity undertakes an annexation, consolidation, or detachment proceeding under this chapter, the entity shall coordinate with the Arkansas Geographic Information Systems Office for preparation of legal descriptions and digital mapping for the relevant annexation, consolidation, and detachment areas.

The map contained herein, in evidence, the entity has met requirements of Act 914 of 2015.



- Annexation
- Sections
- Parcels
- Minor Road
- Railroad
- Existing City
- County Boundary



ARKANSAS GIS OFFICE

H:\City Annexation\GIS\Paris\2017\0814 (Recreation).xdw

FILED
MAY 10 2018
Arkansas
Secretary of State

**ORDINANCE NO. 2007-1
AN ORDINANCE FOR THE
ANNEXATION OF CER-
TAIN CONTIGUOUS LANDS
INTO THE CITY OF PARIS,
ARKANSAS; DECLARING
AN EMERGENCY; AND FOR
OTHER PURPOSES**

WHEREAS, the City Council of Paris, Arkansas has the desire to grow and expand its boundaries, and WHEREAS, the City Council of Paris, Arkansas, and the property owner of the following described property desire such property to be within the City of Paris, Arkansas:

A certain tract of land located in the NW 1/4 of the SW 1/4 of Section 6, Township 7 North, Range 25 West in Logan County, Arkansas and being more particularly described as follows:

Commencing at a set mag nail at the SW corner of said NW 1/4 of the SW 1/4; thence North 01° 58' 32" East 273.75 feet along the West line thereof to set mag nail. The point of beginning: thence North 01° 58' 32" East 234.58 feet along said West line to a set mag nail, thence North 01° 58' 32" East 234.58 feet along said West line to a set mag nail; thence South 88° 44' 09" East 284 feet to a point, thence South 01° 58' 32" West 339 feet to a point on the centerline of Schouweller Lane, thence along the centerline Schouweller Lane; thence South 64° 13' 37" West 304 feet to the point of beginning.

Subject to all easements, and right of ways of record. WHEREAS, the above described lands are not plat-

nail at the SW corner of said NW 1/4 of the SW 1/4; thence north 01° 58' 32" East 273.75 feet along the West line thereof to set mag nail. The point of beginning: thence North 01° 58' 32" East 234.58 feet along said West line to a set mag nail, thence North 01° 58' 32" East 234.58 feet along said West line to a set mag nail, thence South 88° 44' 09" East 284 feet to a point, thence South 01° 58' 32" West 339 feet to a point on the centerline of Schouweller Lane; thence along the centerline Schouweller Lane; thence South 64° 13' 37" West 304 feet to the point of beginning.

SECTION 11: That the property is to be held as suburban property.
SECTION 11: Emergency Clause: An emergency is hereby deemed to exist and this Ordinance being necessary for the health, safety and welfare of the citizens of Paris, Arkansas, shall be in full force and effect immediately following its passage and publication.

PASSED AND APPROVED this 5th day of March, 2007, by a two-thirds (2/3) or more majority vote of the Paris City Council. Emergency Clause passed and approved this 5th day of March, 2007, by a two-thirds (2/3) or more majority vote of the Paris City Council.

Bill Elsken, Mayor, City of Paris
Attest: Mary Sullivan, Clerk (Seal)

3-21-
Itc

PARIS EXPRESS

P.O. Box 551

Paris, Arkansas 72855

(501) 963-2901

PROOF OF PUBLICATION

State of Arkansas

County of Logan

I, Vickey Wiggins, Publisher of the Paris Express, a newspaper published in said County and State, and having general circulation therein, hereby certify that the annexed advertisement was published in said paper

1 time(s) on the 21 day of March, 2007

Publisher's Fee \$ 189.38 Vickey Wiggins Publisher

Subscribed and sworn to me this 21 day of March, 2007

My Commission expires

April 28, 2009

HARRY BESHONER
Notary Public

HARRY BESHONER
Notary Public
Logan County, Arkansas
Commission expires April 28, 2009