

## Jennifer Wheeler

---

**From:** Kerry Crismon <codeenforce@cityofpocahontas.com>  
**Sent:** Monday, February 24, 2020 10:41 AM  
**To:** Jennifer Wheeler  
**Subject:** FW: Pocahontas Boundary

Mrs. Wheeler,

The city map follows what you show for the county on both maps. The census boundaries are not correct.

Kerry Crismon  
City of Pocahontas  
Code Enforcement Office  
410 N Marr Street  
Pocahontas, ARK 72455  
870-892-9661

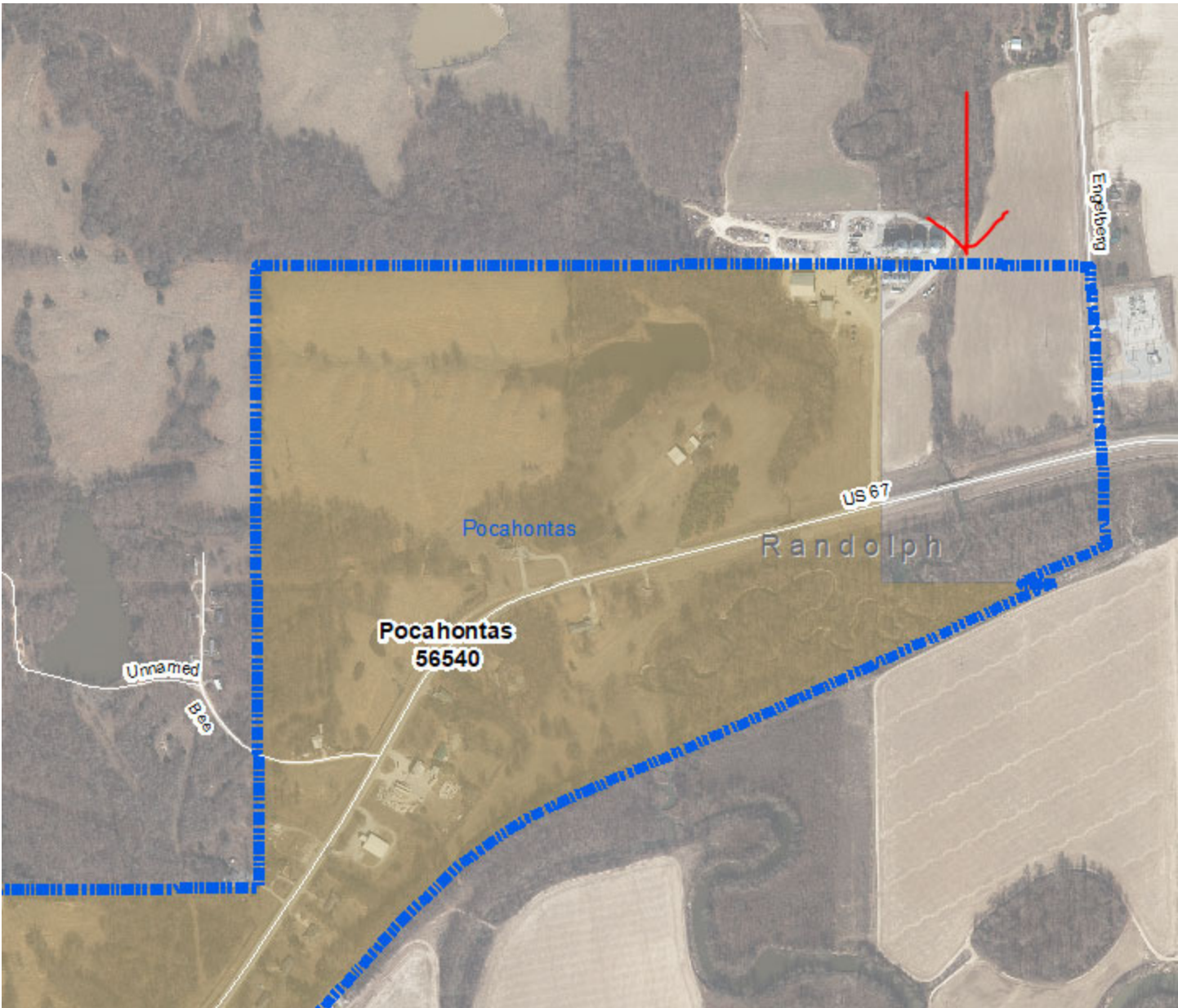
---

**From:** Jennifer Wheeler [mailto:Jennifer.Wheeler@arkansas.gov]  
**Sent:** Friday, February 21, 2020 3:21 PM  
**To:** cjjohnson@cityofpocahontas.com  
**Subject:** Pocahontas Boundary

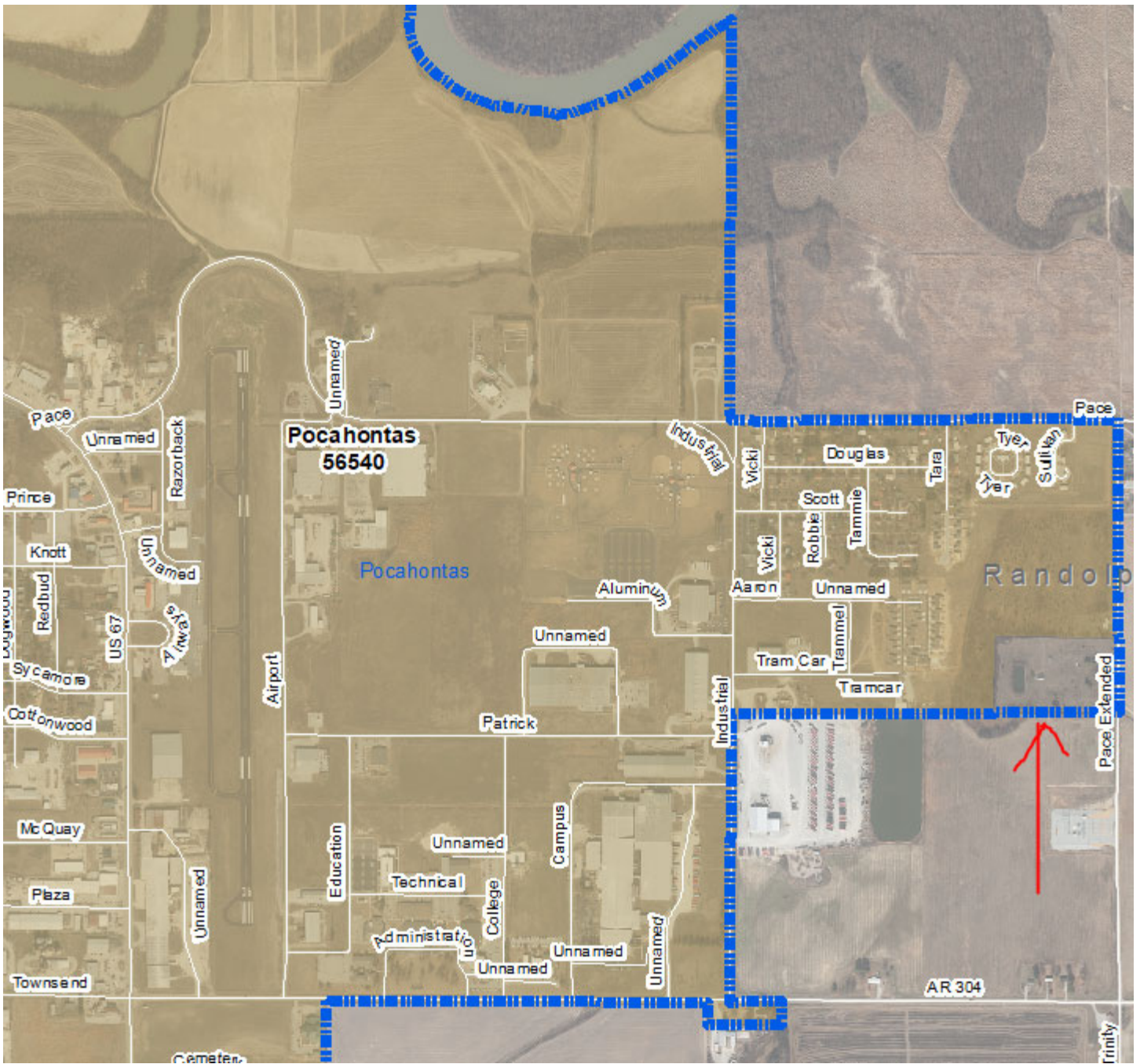
Carol,

Thank you in advance for helping me out with this. There are a couple of spots in the city where we have conflicting information between what the state, county, and US Census have and I was wondering if you could weigh in on whether or not the below areas are inside the city.

This is the very north east of the city. Census is blue line. The brown color is what the state and the county assessor have. Who is more correct—census or state/county?



This is south east of the city. Census is blue line. The brown color is what the state and the county assessor have. Who is more correct—census or state/county?



**Jennifer Wheeler – GIS Analyst**

Department of Transformation & Shared Services  
Arkansas GIS Office  
1 Capitol Mall Ste 6D  
Little Rock, AR 72201  
501.682.2929 Office  
501.454.9524 Mobile  
jennifer.wheeler@arkansas.gov Email  
<https://www.gis.arkansas.gov> Web