

BENTON COUNTY

STATE OF ARKANSAS

TENA O'BRIEN

COUNTY CLERK & VOTER REGISTRAR
215 EAST CENTRAL, SUITE 217
BENTONVILLE, AR 72712-5373

PROBATE COURT CLERK
COURTHOUSE, 102 N.E. "A" STREET
BENTONVILLE, AR 72712-5350

April 14, 2016

FILED

APR 25 2016

Arkansas
Secretary of State

RECEIVED

APR 22 2016

Arkansas
Secretary of State

Honorable Mark Martin
Secretary of State
Room 256 State Capitol
Little Rock, AR 72201-1094

Dear Secretary Martin:

RE: Seth, Jan and Judith
City of Springdale Annexation
Benton County Court Case No. CC# 2015-21

Dear Secretary Martin:

In accordance with the law, I am enclosing a certified copy of each of the following:

1. Map (survey and vicinity map) of the affected area.
2. Decree of Annexation entered on February 03, 2016.
3. Ordinance No. 5019 adopted on March 08, 2016 by the City of Springdale.

If you have any questions regarding this matter, please do not hesitate to call my office.

Sincerely,

Tena O'Brien

Tena O'Brien

By: T. Underwood

Enclosures

COUNTY CLERK (479) 271-1013
FAX (479) 271-1019

VOTER REGISTRAR (479) 271-5704

BENTONVILLE (479) 271-1013
FAX (479) 271-1019

SILOAM SPRINGS (479) 238-0120
FAX (479) 524-8534

PROBATE COURT CLERK (479) 271-5727
FAX (479) 271-1712

ROGERS (479) 636-3727
FAX (479) 636-4922
ARCHIVIST (479) 636-1037
FAX (479) 636-1053

RECEIVED

APR 22 2016

Arkansas
Secretary of State
ORDINANCE NO. 5019

FILED

2016 APR 14 AM 9:38

FILED IN NEW
DO & RECORDED CLERK
BENTON COUNTY, AR

Brenda DeShields-Circuit Clerk
Benton County, AR
Book/Pgs: 2016/13185
Term/Cashier: CASH5/Jimmy Bennett
03/14/2016 9:10:48AM
Tran: 369848
Total Fees: \$25.00

Book 2016 Page 13185
Recorded in the Above
DEED Book & Page
03/14/2016

**AN ORDINANCE ANNEXING
CERTAIN PROPERTY INTO THE
CITY OF SPRINGDALE,
BENTON COUNTY, ARKANSAS.**

WHEREAS, Jan & Judith Seth, *et ux*, own the following described property situated in Benton County, Arkansas, to-wit:

Part of the NE 1/4 of the NE 1/4 of Section 13, Township 18 North, Range 31 West, and part of the NW 1/4 of the NW 1/4 of Section 18, Township 18 North, Range 30 West, all in Benton County, Arkansas, being more particularly described as follows: Commencing at the SW corner of said NE 1/4 of the NE 1/4 thence South 88°58'26" East 350.25 feet to the Point of Beginning; thence North 19°58'26" West 782.00 feet; thence along the approximate center of Wagon Wheel Road as follows: North 81°55'40" East 63.75 feet, North 85°08'16" East 95.57 feet, North 88°34'57" East 87.08 feet, South 88°53'53" East 86.54 feet, South 84°22'33" East 60.54 feet, South 77°10'45" East 49.89 feet, South 67°26'50" East 69.30 feet, South 56°54'05" East 67.14 feet, South 52°41'41" East 110.21 feet, thence South 58°36'26" East 39.15 feet and South 71°57'33" East 44.37 feet; thence along the approximate center of Drake Road as follows: South 40°51'49" East 56.46 feet, South 61°49'57" East 129.79 feet, South 73°32'52" East 205.03 feet, South 77°15'03" East 112.34 feet, South 74°25'02" East 30.68 feet, South 56°21'23" East 26.06 feet, South 31°14'21" East 22.25 feet, South 08°40'52" East 36.44 feet, South 06°41'24" West 68.52 feet, North 89°02'02" West 15.56 feet and South 01°27'03" West 254.26 feet; thence leaving said Drake Road North 88°58'26" West 974.10 feet along the South line of said NE 1/4 of the NE 1/4 to the Point of Beginning, containing 15.26 acres and subject to the rights-of-way of Wagon Wheel Road and Drake Road and subject to any other easements of record or fact.

WHEREAS, by order of annexation of the County Court of Benton County, Arkansas dated January 25, 2016, and filed for record February 3, 2016, the above-described real property was annexed into the City of Springdale, Benton County, Arkansas;

WHEREAS, the property is contiguous to land already situated in the City of Springdale, Benton County, Arkansas as shown on the Map attached to this Ordinance and marked Exhibit "A";

**NOW, THEREFORE, BE IT ORDAINED BY THE CITY COUNCIL FOR THE
CITY OF SPRINGDALE, ARKANSAS:**

Section 1: That the above-described real property is hereby annexed into the City of Springdale, Benton County, Arkansas, pursuant to Ark. Code Ann. §14-40-601, *et seq.*, and assigned to Ward 1 of the City of Springdale, Arkansas.

FILED

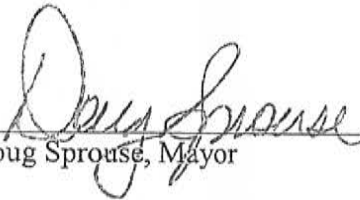
Book 2016 Page 13186
Recorded in the Above
DEED Book & Page
03/14/2016

2016 APR 14 AM 9:38

Section 2: That this ordinance shall be mailed to the recorder of deeds of Benton County, Arkansas, as well as the County Clerk of Benton County, Arkansas, who shall certify one copy of the plat of the annexed territory and one copy of the Order of the Court and the resolution or ordinance of this Council and forward a copy of each document to the Secretary of State and to the Director of the Tax Division of the Arkansas Public Service Commission to show the above described property now located within the City of Springdale, Benton County, Arkansas.

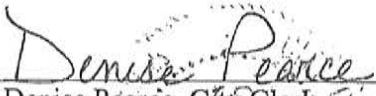
Section 3: Emergency Clause. It is hereby declared that an emergency exists and this ordinance, being necessary for the preservation of the health, safety and welfare of the citizens of Springdale, Arkansas, shall be in effect immediately upon its passage and approval.

PASSED AND APPROVED this 8TH day of March, 2016.



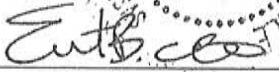
Doug Sprouse, Mayor

ATTEST:



Denise Pearce, City Clerk

APPROVED AS TO FORM



Ernest B. Cate, City Attorney

RECEIVED

APR 22 2016

Arkansas
Secretary of State

RECEIVED

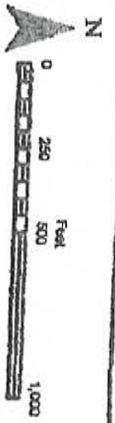
FILED

APR 22 2016

2016 APR 14 AM 9:38

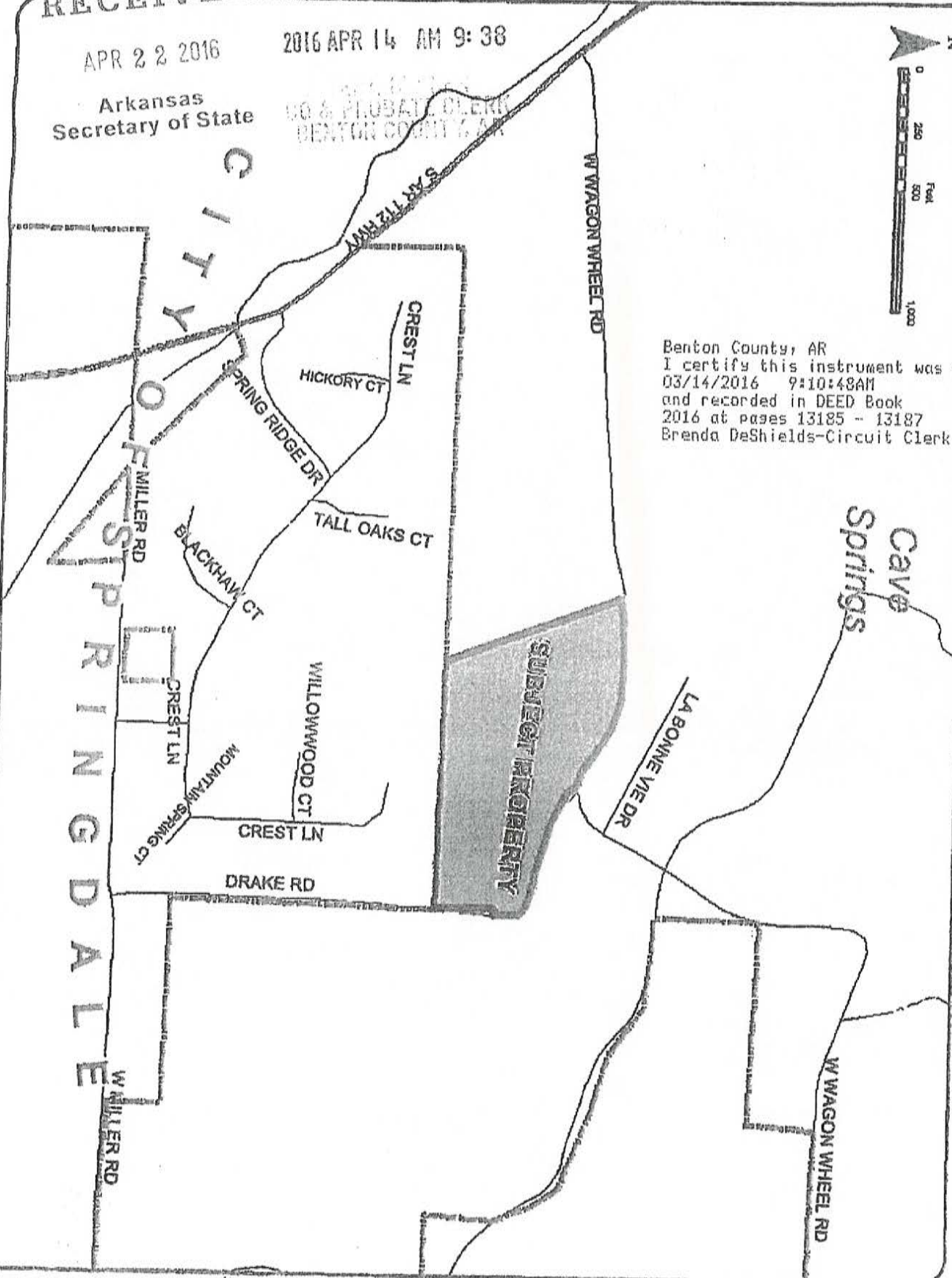
Arkansas
Secretary of State

CLERK OF COURT
& PROBATE CLERK
BENTON COUNTY, AR



Benton County, AR
I certify this instrument was filed on
03/14/2016 9:10:48AM
and recorded in DEED Book
2016 at pages 13185 - 13187
Brenda DeShields-Circuit Clerk

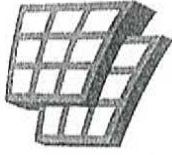
Cave
Springs



CITY OF MILLER RD
SPRINGDALE
W MILLER RD

2016 APR 14 PM 12:06

TENA O'BRIEN
CO. & PROBATE CLERK
BENTON COUNTY, AR



**ARKANSAS
GIS OFFICE**

April 13, 2016

Mrs. Tiffany Underwood
Benton County Clerk's Office
215 E. Central Ave.
Bentonville, AR 72712

F I L E D

APR 25 2016

Arkansas
Secretary of State

RECEIVED

APR 22 2016

Arkansas
Secretary of State

RE: City of Springdale Annexation Coordination Requirement

Mrs. Underwood,

Thank you for coordinating with our office as you seek to annex property into the City of Springdale, AR case number CC2015-21. This letter represents confirmation that you have properly coordinated with our office (Arkansas GIS Office) as specified in § 14-40-101 (Act 914 of 2015) of the 90th General Assembly.

Our office will wait completion of any additional steps necessary for the proposed boundary change, which normally comes from the Arkansas Secretary of State Elections Division after any appropriate filing by the County Clerk.

Thank you,

Richie Pierce, Sr. GIS Analyst
/rp

2016 APR 14 PM 12:06

TENA O'NEILL
CO. & PROBATE CLERK
BENTON COUNTY ARK



ARKANSAS
GIS OFFICE

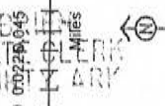
City: Springdale
Mayor: Doug Sprouse

Arkansas Code 14-40-101.

Before an entity undertakes an annexation, consolidation, or detachment proceeding under this chapter, the entity shall coordinate with the Arkansas Geographic Information Systems Office for preparation of legal descriptions and digital mapping for the relevant annexation, consolidation, and detachment areas.

The map contained herein, in evidence, file entity has met requirements of Act 914 of 2015

- Proposed Annex
- Township-Range
- Sections
- Parcels
- Highway
- Minor Road
- Existing City
- Neighboring City
- County Boundary



RECEIVED

APR 22 2016

Arkansas
Secretary of State

Proposed Annex: City of Springdale
April 2016

