

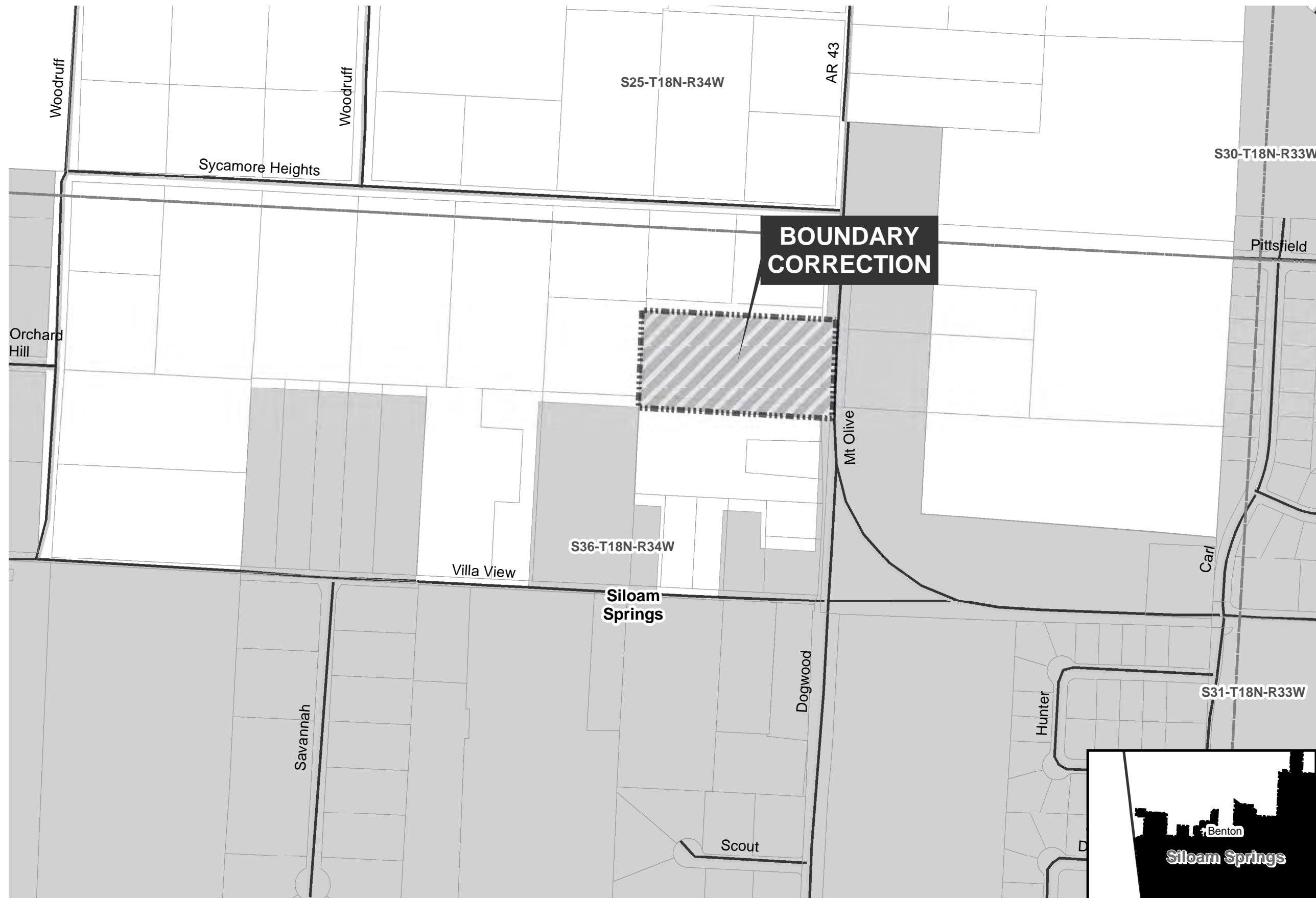
Boundary Correction for BAS: City of Siloam Springs Ordinance 2010-06
January 2018

City: Siloam Springs
Mayor: John Mark Turner

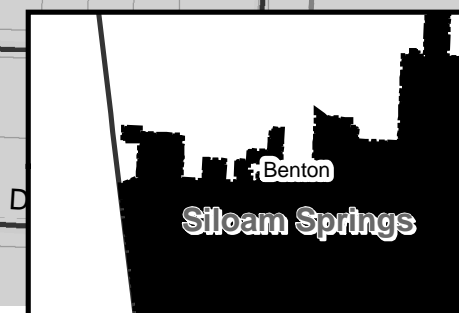
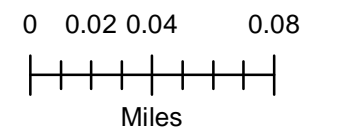
Arkansas Code 14-40-101.

Before an entity undertakes an annexation, consolidation, or detachment proceeding under this chapter, the entity shall coordinate with the Arkansas Geographic Information Systems Office for preparation of legal descriptions and digital mapping for the relevant annexation, consolidation, and detachment areas.

The map contained herein, is evidence, the entity has met requirements of Act 914 of 2015



- Sections
- Boundary Correction - State Plane North
- Parcels
- Minor Road
- County Boundary
- Municipal Boundary





State of Arkansas Secretary of State

Charlie Daniels
Secretary of State

Business & Commercial Services	682-3409
Elections	682-5070
Building & Grounds	682-3407
Communications & Education	683-0057
State Capitol Police	682-5173
Business Office	682-8032
Information Technology	682-3411

June 25, 2010

The Honorable Tena O'Brien
Benton County Clerk
215 East Central, Suite 217
Bentonville, AR 72712-5373

Dear Ms. Porterfield:

The Following Information has been recorded and filed in the Office of the Secretary of State:

Date: June 25, 2010 County: Benton Town: Siloam Springs

Annexation:	Ordinance No: 2010-06
	County Order No.— CC
	Plat - x
	Election -
	Island -
Incorporation:	Ordinance No. -
	Co. Order No. -
	Plat -
	Election -

Census Information: The following City or Town has been upgraded or reduced to:

- 1st Class City -
- 2nd Class City -
- Incorporated Town -

I have forwarded this information to the Arkansas Municipal League and the Arkansas Highway and Transportation Department and the Arkansas State Data Center. If you have any further questions please do not hesitate to contact me at 1-800-482-1127 or 682-3451

Sincerely,

Pam Ratliff
Election Services Representative
Arkansas Secretary of State

BENTON COUNTY

STATE OF ARKANSAS

TENA O'BRIEN

COUNTY CLERK & VOTER REGISTRAR

215 EAST CENTRAL, SUITE 217
BENTONVILLE, AR 72712-5373

PROBATE COURT CLERK

COURTHOUSE, 102 N.E. "A" STREET
BENTONVILLE, AR 72712-5350

June 18, 2010

Honorable Charlie Daniels
Secretary of State
Room 256 State Capitol
Little Rock, AR 72201-1094

Dear Secretary Daniels:

Re: John and Lynn Guffey
City of Siloam Springs Annexation
Benton County Court Case No. CC 2010-02

Dear Secretary Daniels:

In accordance with law, I am enclosing a certified copy of each of the following:

1. Map (survey and vicinity map) of the area affected
2. Order of Annexation entered on April 6, 2010
3. Ordinance No.10-06 adopted June 15, 2010 by the City of Siloam Springs

Will you please record this annexation on your records and acknowledge receipt of these documents.

Sincerely,


Tena O'Brien

FILED

JUN 25 2010

CHARLIE DANIELS
SECRETARY OF STATE

BY _____

COUNTY CLERK (479) 271-1013
VOTER REGISTRAR (479) 271-5704
BENTONVILLE (479) 271-1013
SILOAM SPRINGS (479) 238-0120
PROBATE COURT CLERK (479) 271-5727
ROGERS (479) 636-3727
FAX (479) 271-1019 FAX (479) 271-1019 FAX (479) 271-1712 FAX (479) 636-4922
ARCHIVIST (479) 636-1037
FAX (479) 636-1053

FILED

ORDINANCE NO. 10-06

2010 JUN 18 AM 9:57

AN ORDINANCE ACCEPTING THE ANNEXATION OF CERTAIN TERRITORY TO THE CITY OF SILOAM SPRINGS, ARKANSAS, AND MAKING SAME A PART OF THE CITY OF SILOAM SPRINGS, ARKANSAS, AND ASSIGNING SAME TO WARDS

WHEREAS, petition was filed with the County Clerk of Benton County, Arkansas, by the majority of the real estate owners of the hereinafter described territory praying that said territory be annexed to, and made a part of the City of Siloam Springs, Arkansas; and,

WHEREAS, on April 6, 2010, the County Court of Benton County, Arkansas, found that the petition was signed by a majority of the real estate owners in said territory; that said territory was contiguous and adjoining the present corporate limits of the City of Siloam Springs, Arkansas; that an accurate plat or map of said territory had been filed with and made a part of said petition; that proper notice had been given for the time and in the manner prescribed by law, and that all things pertaining thereto had been done in the manner prescribed by law, and that said lands and territory should be annexed to and made a part of the City of Siloam Springs, Arkansas, subject to the acceptance of same by the City Board of Directors of said City at the proper time, as provided by law; and,

WHEREAS, the time fixed by law for appealing from said order of annexation made by the County Court has expired and no appeal has been taken from said order.

NOW, THEREFORE, BE IT ORDAINED BY THE City Board of Directors of the City of Siloam Springs, Arkansas:

Section 1. That the following described lands and territory contiguous and adjoining the City of Siloam Springs, Arkansas, be and the same is hereby accepted as part of and annexed to and made a part of the City of Siloam Springs, Arkansas:

Lot 3, in Sycamore Heights Subdivision, NW ¼ of NW ¼ of Section 36, Township 18 N, Range 34 W, Benton County, Arkansas.

Section 2. That the above described territory shall be annexed to and made a part of Ward 1 of the City of Siloam Springs, Arkansas, and the same shall henceforth be a part of said ward as fully as existing parts of said ward.

Section 3. That the zoning map of the City (Municipal Code Section 102-21) is hereby amended to include within the R-2 zoning district the above described territory.

FILED

JUN 25 2010

CHARLIE DANIELS
SECRETARY OF STATE

BY _____

ATTN: Peggy Woody
CITY OF SILOAM SPRINGS
P.O. BOX 80
SILOAM SPRINGS, AR 72761

2010 2112

PASSED AND APPROVED this 15 day of June, 2010.

FILED

2010 JUN 18 AM 9:57

(SEAL)
ATTEST:

APPROVED:

TENA O'BRIEN
CO. & PROBATE CLERK
BENTON COUNTY, AR

Peggy Woody
Peggy Woody, City Clerk, MMC

David E. Allen
David E. Allen, Mayor



STATE OF ARKANSAS)
COUNTY OF BENTON)
CERTIFICATE OF CLERK
I, TENA O'BRIEN, Clerk of the County and Probate Courts
in and for the County and State aforesaid, do hereby certify
that this instrument of writing is a true and complete copy,
and the same appears of record in County Court
Book 2010 Page 0110 being on file in my said office.
I have hereunto set my hand and official seal this 18th
day of JUNE, 20 10
TENA O'BRIEN, Clerk
Benton County Arkansas
By K. Hanson

FILED

JUN 25 2010

CHARLIE DANIELS
SECRETARY OF STATE

BY _____

201022113

STATE OF ARKANSAS)
COUNTY OF BENTON)

CERTIFICATE OF CLERK

I, TENA O'BRIEN, Clerk of the County and Probate Courts in and for the County and State aforesaid, do hereby certify that this instrument of writing is a true and complete copy,

and the same appears of record in County Court

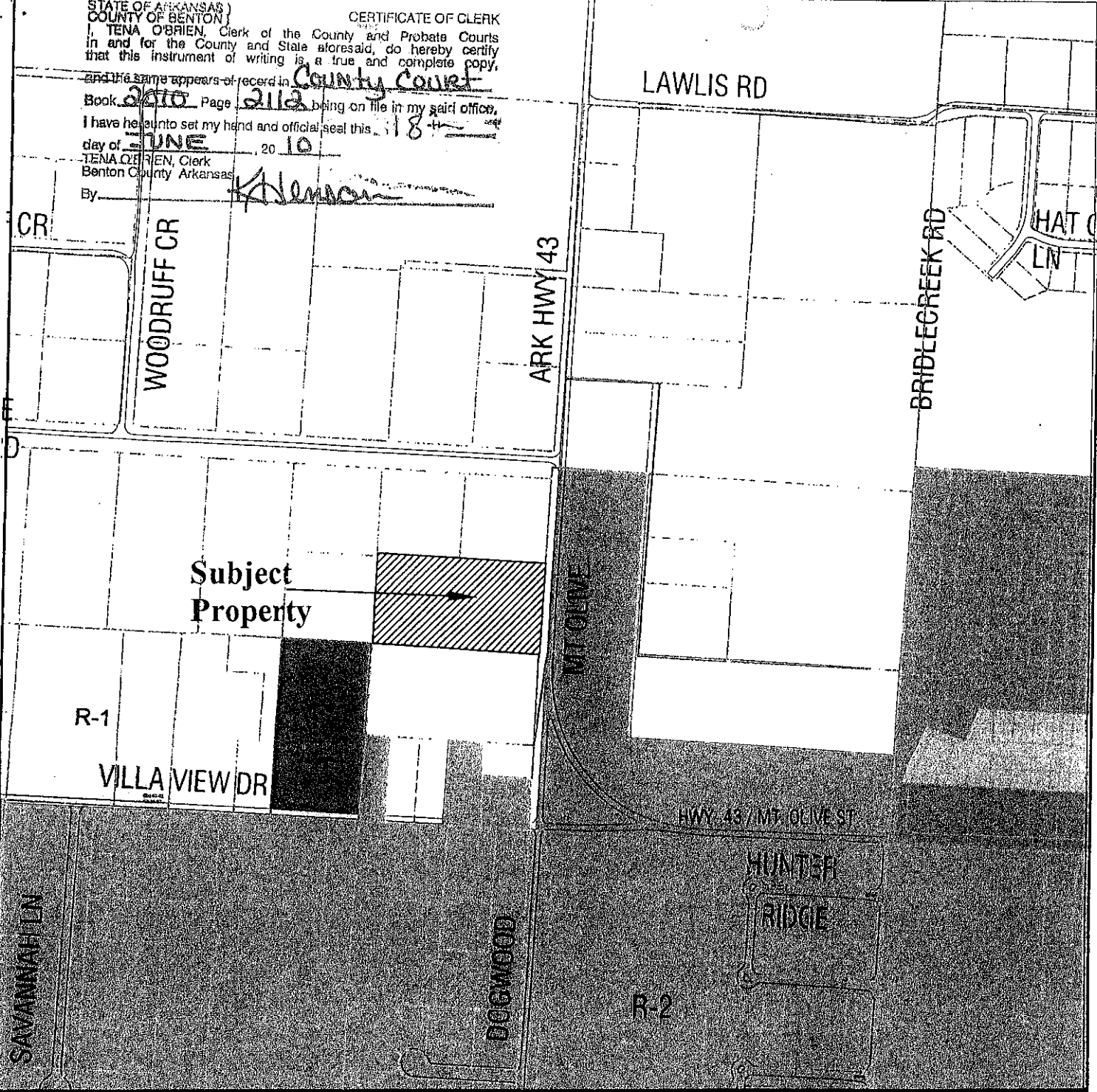
Book 2010 Page 2112 being on file in my said office,

I have hereunto set my hand and official seal this 18

day of JUNE, 20 10

TENA O'BRIEN, Clerk
Benton County Arkansas

By K. Jensen



GENERAL AREA MAP

ANNEXATION

Guffey

3030 N. Mt. Olive St.

FILED

JUN 25 2010

CHARLIE DANIELS
SECRETARY OF STATE

ZONING LEGEND

- C-1
- C-2
- C-3A
- R-1
- R-2
- R-3
- R-4
- M-H



Date: 05/17/2010

Not to
Scale

City of Siloam Springs
Community Development Department
P.O. Box 80400 N. Broadway
Siloam Springs, AR 72761
PH: 524-5136
FAX: 238-0997

This map is intended for informational and general planning purposes only. Use of this map is without warranty by the City of Siloam Springs Community Development Department and is not intended to represent a true and accurate scale.

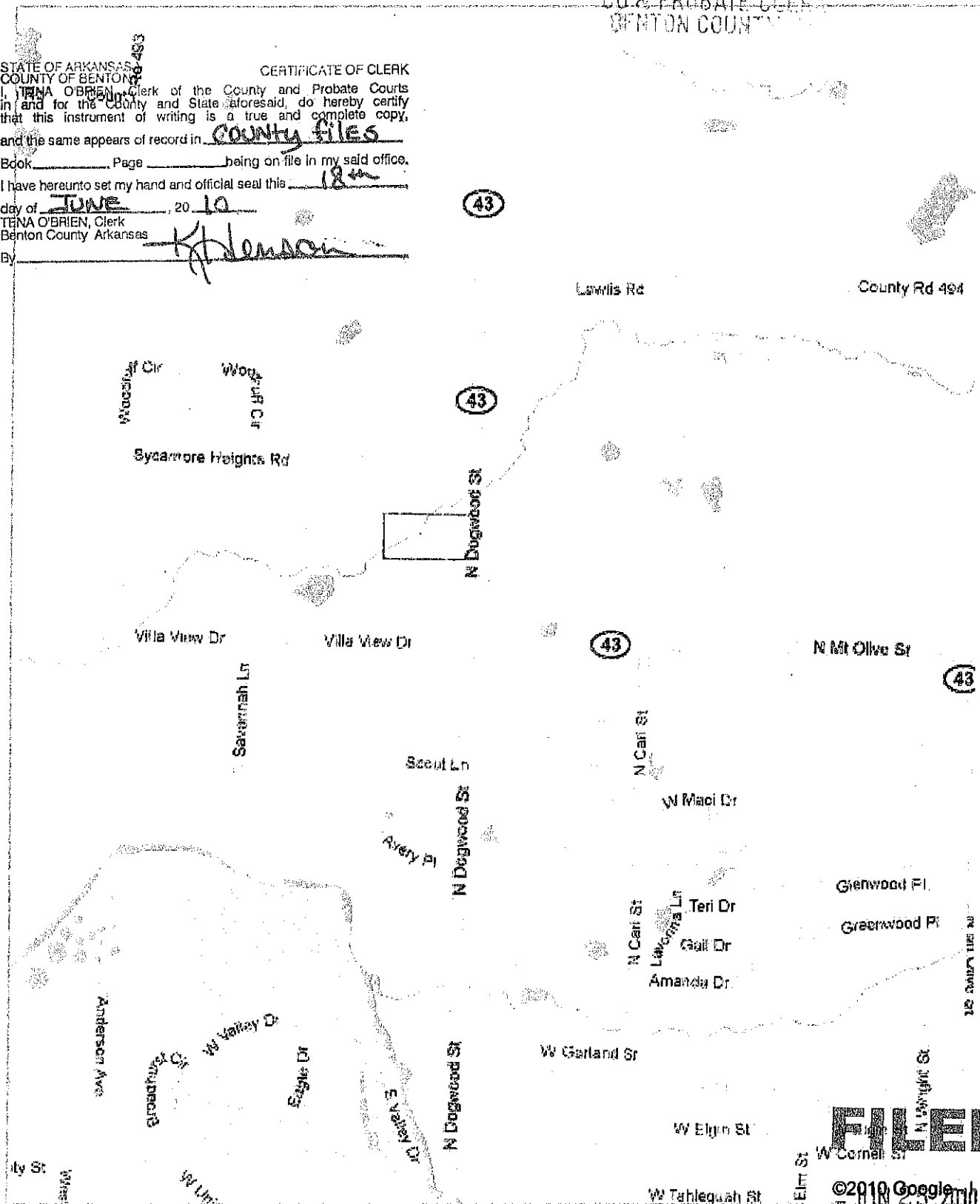
ANNEXATION_GUFFEY.DWG

2010 2114



TENA O'BRIEN
CO. & PROBATE CLERK
BENTON COUNTY

STATE OF ARKANSAS
COUNTY OF BENTON
I, TENA O'BRIEN, Clerk of the County and Probate Courts
in and for the County and State aforesaid, do hereby certify
that this instrument of writing is a true and complete copy,
and the same appears of record in COUNTY files
Book _____ Page _____ being on file in my said office.
I have hereunto set my hand and official seal this 18th
day of JUNE, 20 10
TENA O'BRIEN, Clerk
Benton County Arkansas
By [Signature]



FILED

©2010 Google
JUN 23 2010

FILED

2010 APR -6 AM 10:39

TERESA D. BRIEN
CO. & PROBATE CLERK
BENTON COUNTY, AR

IN THE COUNTY COURT OF BENTON COUNTY, ARKANSAS

IN THE MATTER OF ANNEXING TO
THE CITY OF SILOAM SPRINGS,
ARKANSAS, CERTAIN PROPERTY
CONTIGUOUS TO SAID CITY OF
SILOAM SPRINGS IN BENTON
COUNTY, ARKANSAS

CASE NO. CC 2010-02

GUFFEY, JOHN A and LYN et ux

PETITIONER(S)

DECREE OF ANNEXATION

On this 6th day of April, 2010, a day of the regular term of the County Court of Benton County, Arkansas, there is presented to the court by the petitioners, a Petition for annexation of certain territory, hereinafter more particularly described, to the City of Siloam Springs, Arkansas, and the Court being fully advised of the facts and the law, doth hereby find, judge and decree as follows:

1. The Court finds that the Petition for annexation was filed in the office of the Clerk of this Court more than thirty (30) days prior to this date.
2. The Court doth find that a majority of the total number of real estate owners in the area affected by the Petition has signed said Petition and that such majority owns more than one-half of the acreage affected.
3. The Court further finds that the territory sought to be annexed was accurately described in said Petition, or as amended, and that said territory is contiguous to the boundaries of the City of Siloam Springs, Arkansas.
4. The Court further finds that attached to and made a part of said Petition is an accurate map of the territory sought to be annexed to the City of Siloam Springs, Arkansas.

FILED

JUN 25 2010

CHARLIE DANIELS
SECRETARY OF STATE

BY _____

2010 0970

FILED

5. The Court further finds that the prayer of the Petition is right and proper 2010 APR -6 AM 10: 39

WHEREFORE, THE COURT DOTH HEREBY ORDER, JUDGE AND DECREE that the following described territory be and the same is hereby annexed to and made a part of the City of Siloam Springs, Arkansas, to-wit: (description of property)

TENA O'BRIEN
CLERK OF PROBATE CLERK
BENTON COUNTY, AR

LOT 3, IN SYCAMORE HEIGHTS SUBDIVISION, NW 1/4 OF NE 1/4 OF SECTION 36, TOWNSHIP 18 N, RANGE 34 W.

THE COURT DOTH FURTHER ORDER that this Order be delivered to the County Clerk for the same to be properly recorded upon the records of Benton County, Arkansas, and the Clerk, after properly recording and filing the same, prepare transcripts and deliver one of the certified transcripts to the City of Siloam Springs, Arkansas, one copy to the Secretary of State, and one copy to the Director of the Tax Division of the Arkansas Public Service Commission.

David M. Baker
COUNTY JUDGE

STATE OF ARKANSAS) CERTIFICATE OF CLERK
COUNTY OF BENTON)
I, TENA O'BRIEN, Clerk of the County and Probate Courts
in and for the County and State aforesaid, do hereby certify
that this instrument of writing is a true and complete copy,
and the same appears of record in County Court
Book 2010 Page 0970 being on file in my said office.
I have hereunto set my hand and official seal this 18th
day of JUNE, 20 10
TENA O'BRIEN, Clerk
Benton County Arkansas
By K. Hansen

FILED

JUN 23 2010

CHARLIE L. A. ...
SECRETARY OF STATE

2010 0971

BY _____