



FEMA

Risk MAP

Mapping, Assessment & Planning

Arkansas Partnership Meeting

Guy Lowes, PE, PLS

April 18, 2012

RiskMAP

Increasing Resilience Together



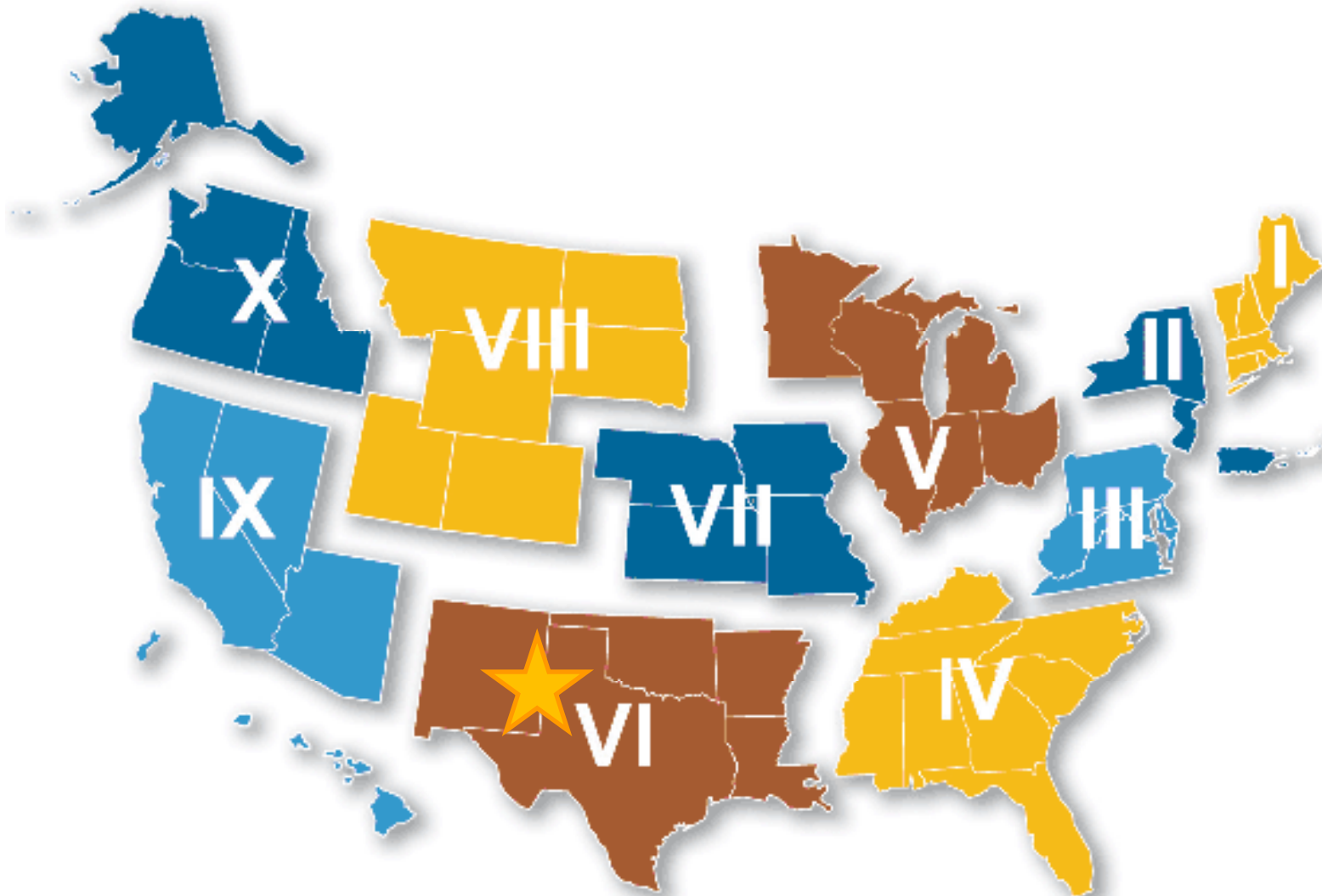
FEMA's Mission

.... to **support** our citizens and first responders to ensure that as a Nation we **work together to build, sustain, and improve our capability** to prepare for, protect against, respond to, recover from, and mitigate all hazards.



FEMA

FEMA Region 6



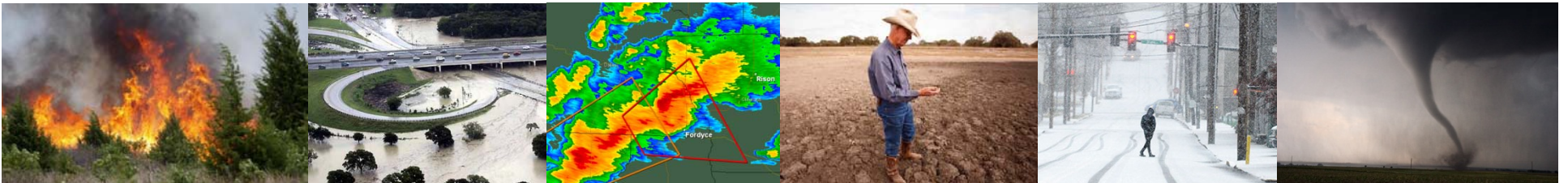
National Flood Insurance Program (NFIP)

- Program requirements are intended to:
 - Prevent loss of life and property
 - Reduce taxpayer costs for disaster relief
 - Minimize economic and social hardships that result from flood events
- Program is administered at the local level
- Support is available for communities through the State NFIP Coordinator and FEMA staff



Our Goal

- Actively participating communities who
 - Assess and understand their natural hazard risk
 - Utilize tools, services and products to make informed decisions
 - Actively update their hazard mitigation plans
 - Actively engage with our agency to implement projects to reduce natural hazard risk
 - Inform and educate their residents and business owners of natural hazard risk



Risk MAP: The Vision

Through collaboration with State, Local, and Tribal entities, Risk MAP will deliver quality data that increases public awareness and leads to action that reduces risk to life and property.



Risk MAP

- Risk MAP is a **fundamental change** in the way that FEMA conducts its mapping process
- An integrated approach to assist communities in mitigation activities and projects to reduce their risk
- Region 6 is interested in creating a collaborative and **community/project centric approach** that fosters partnership & local buy-in and acceptance

Risk MAP Metrics



Quality Data Collection

Are our products precise and accurate?



Public Awareness of Natural Hazard Risk

Are we consistent in our message?



Mitigation Planning & Informed Decision Making

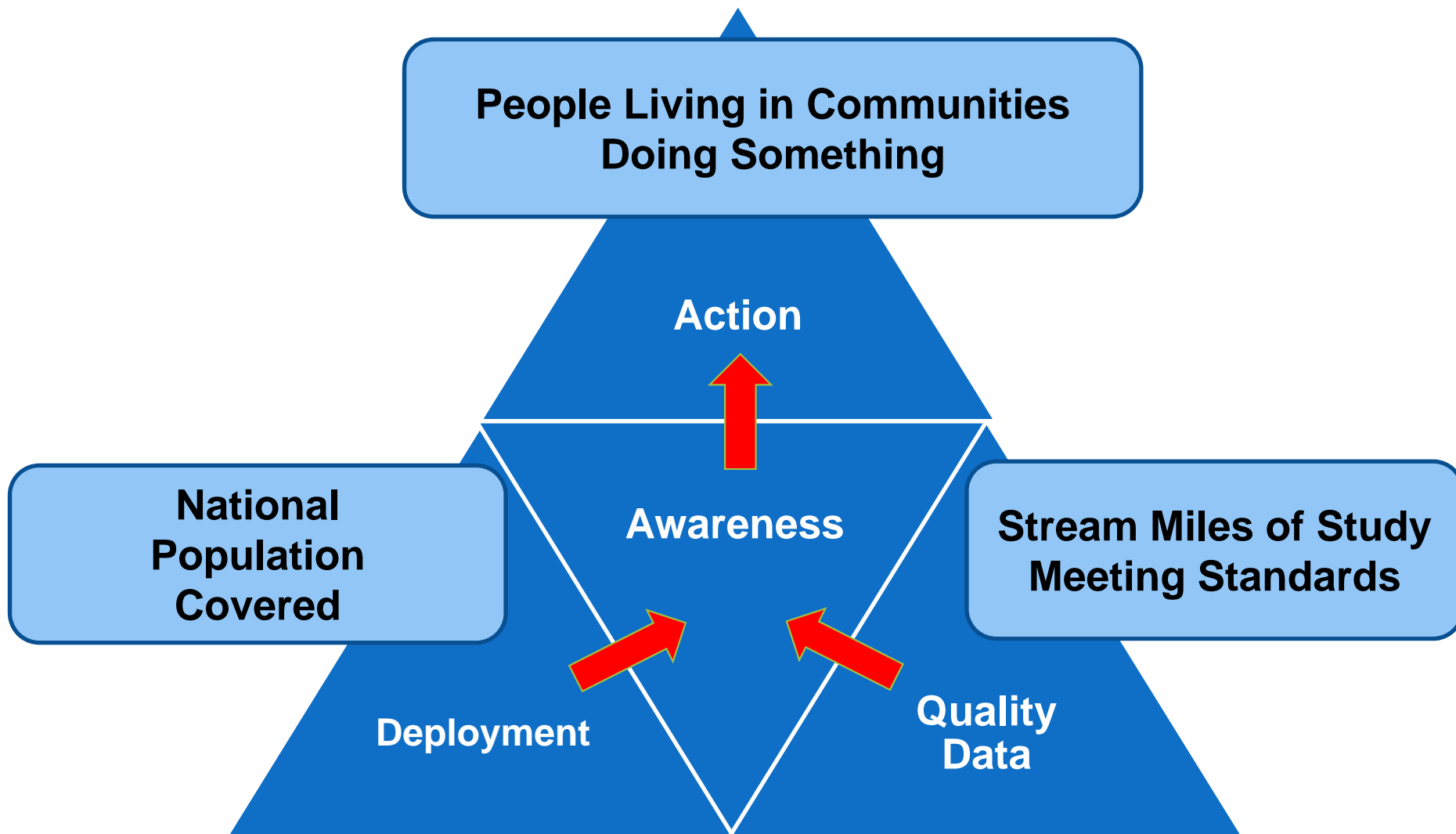
Are our communities aware of their risk?



Action to Reduce Risk

Are we working to continue reduction of risk?

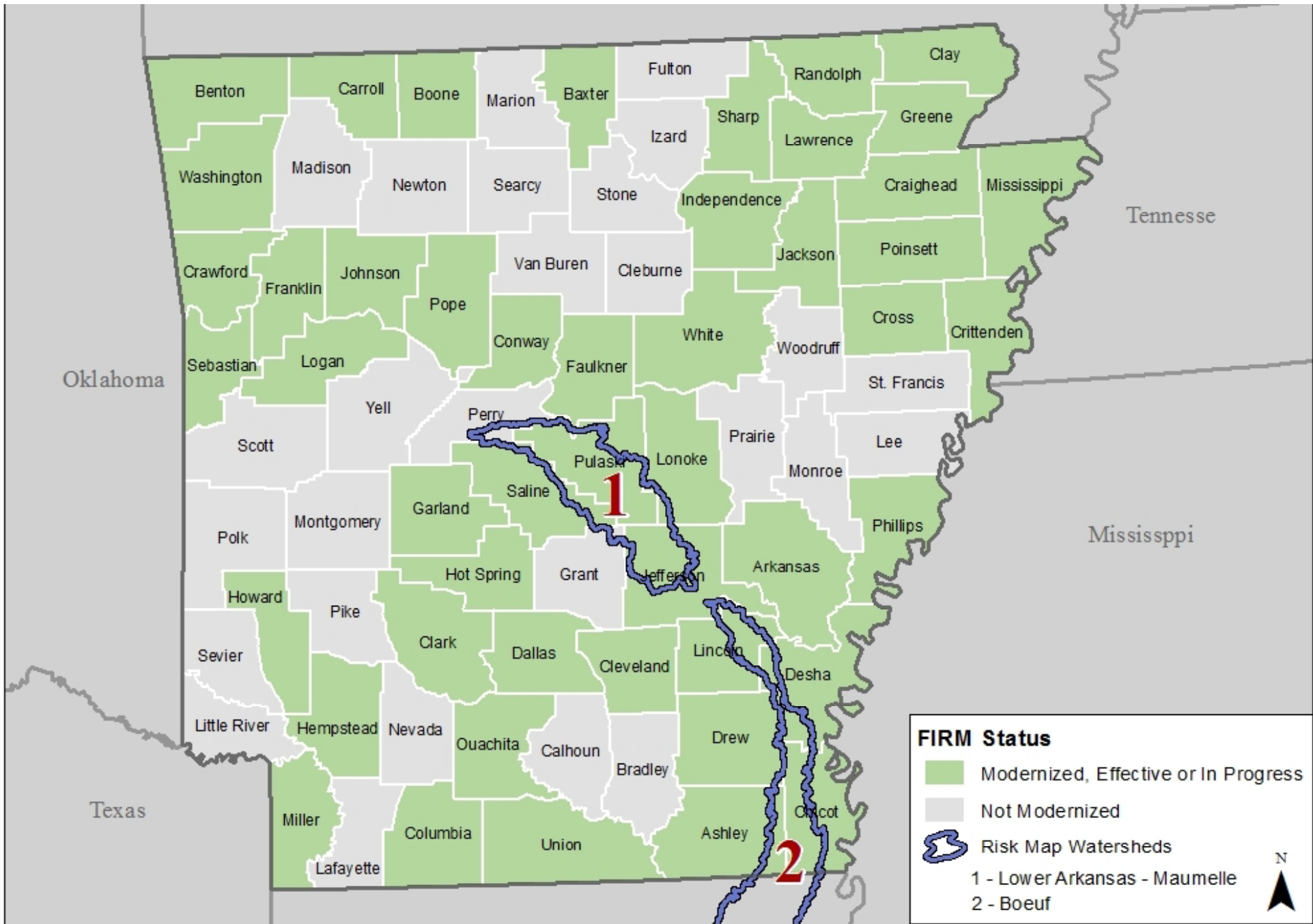
Risk MAP Metrics



Community Engagement

- **Partnerships are essential....**
 - We need the support of our Federal, State and Regional partners for successful distribution
- **Education is the key....**
 - Majority of stakeholders will make the right decision if they are a part of the process
 - Survey results indicate communities and residents are unsure of what to do in order to reduce their natural hazard risk
- **Risk Communication...**
 - Consistent messaging to all communities
 - **Lowest cost, broadest audience if in all communications from all branches**





Levee Status

COUNTY	ACCREDITED or PAL	NON-ACCREDITED
Chicot	1	2
Conway	0	8
Craighead	1	1
Crawford	2	0
Crittenden	1	0
Cross	1	1
Desha	4	0
Greene	1	1
Hempstead	0	1
Independence	1	0
Jackson	1	2

COUNTY	ACCREDITED or PAL	NON-ACCREDITED
Jefferson	5	2
Johnson	1	1
Lincoln	1	0
Logan	2	0
Mississippi	1	4
Phillips	5	0
Poinsett	4	0
Pope	1	0
Pulaski	2	8
Sebastian	0	1
Union	1	0

FEMA ENGAGEMENT WITH STAKEHOLDERS AND DATA COLLECTION

Review of all available data begins the process...

Risk Identification and Communication <ul style="list-style-type: none"> Low water crossings? Large areas of fill placement? Future development areas? Capital improvement projects? Channelization projects? Large reservoirs? O&M plan? Flood risk reduction projects? Digital stream inventory? Digital building stock? High water marks from recent flooding event? Elevation data? LIDAR? Local flood studies? 	Engage: <ul style="list-style-type: none"> U.S. Geological Service U.S. Army Corps of Engineers U.S. Environmental Protection Agency State NFIP coordinator State Hazard Mitigation Officer State floodplain management associations State emergency management associations Local elected officials Regional authorities Local floodplain administrators Local emergency management officials Local levee districts Watershed groups Special interest groups Local business and commerce entities CTPs 	NFIP Community Actions <ul style="list-style-type: none"> Participating in the NFIP? Community assistance meetings? Community Rating System (CRS)? Repetitive loss properties? Areas of insurance claims? Community assistance visits? Community assistance calls? Active Letters of Map Change (LOMCs)? Recent disaster? Declared? Data from FOAs?
Mitigation Planning and Mitigation Actions <ul style="list-style-type: none"> Approved hazard mitigation plan? Local evacuation plans? Current land use plan? Future land use plan? Drainage master plan(s)? Flood reduction projects? Culvert enlargement projects? Areas of encroachment during high water? Local HAZUS runs? Digital parcel boundaries? 	Community Benefits and Grant Opportunities <ul style="list-style-type: none"> Grant administration plan? Ongoing grant projects? Hard projects? (infrastructure) Soft projects? (outreach/education) Targeted buy-out areas? Elevation projects planned? Pre-Disaster Mitigation (PDM) grants? Severe Repetitive Loss (SRL) grants? Grants in need of engineering info? Post-disaster 404 projects? Post-disaster 406 projects? 	

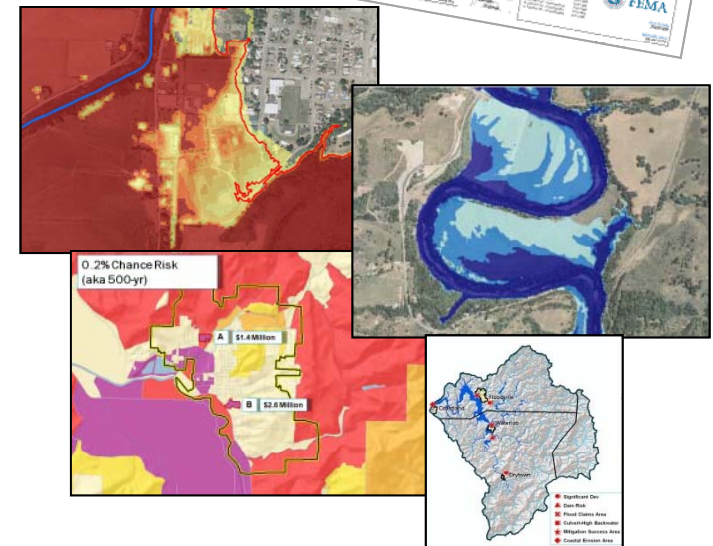
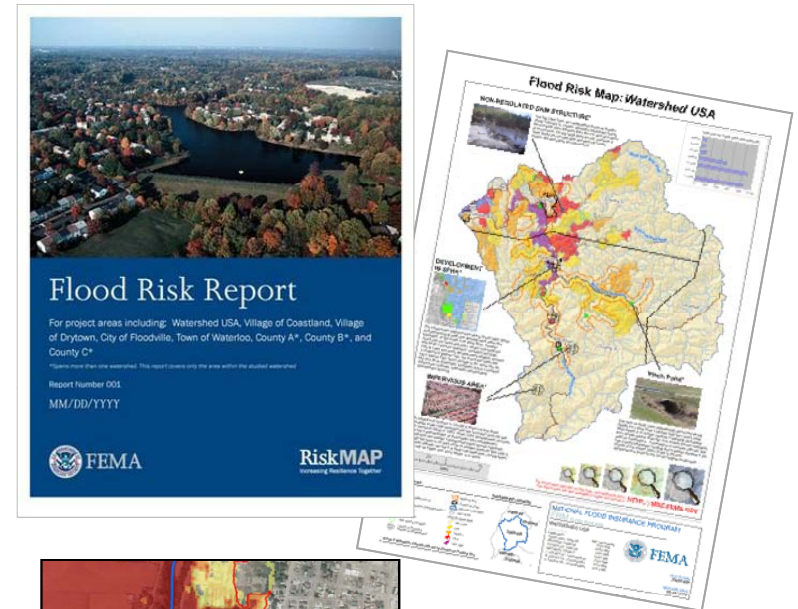
RiskMAP Process Path

LEGEND

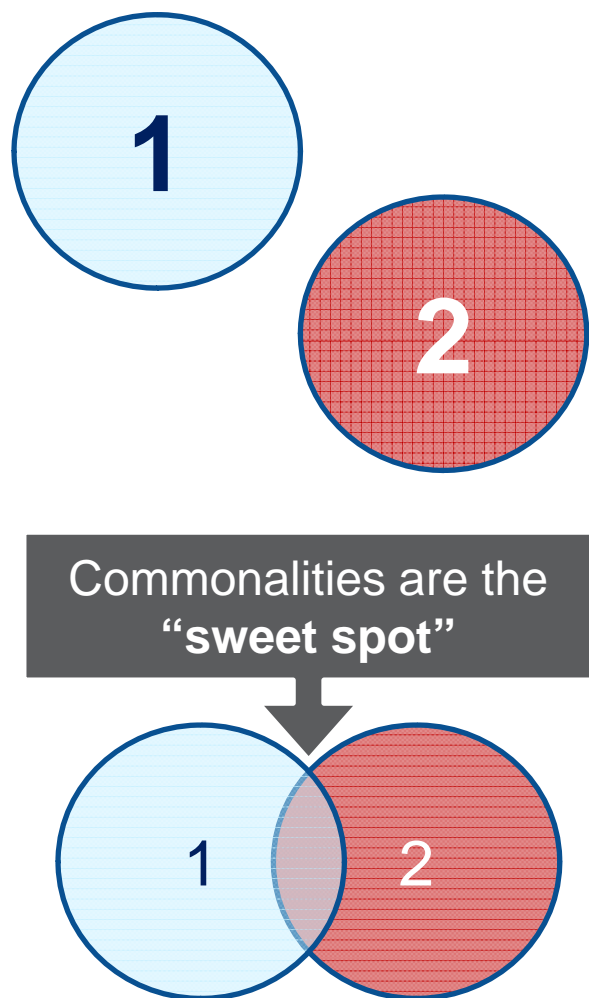
- FEMA/State action
- Community action
- FEMA/State and community action
- Product/tool for community use
- Process path
- Opportunities for mitigation action



Our Products



How you can help....



- We would like to share data with other agencies and departments/disciplines within the state
 - Topographic Data
 - Hydrologic and Hydraulic studies
 - Proposed projects
 - Planning projects
 - Post-Disaster projects
- Many Disciplines....Shared Data?

Questions?



FEMA

Guy Lowes, PE, PLS

Guy.Lowes@fema.dhs.gov